

TES-SS-SFK3 (V-BRACING KIT)					
ITEM NO.	QTY.	PART NO.	DESCRIPTION	SHEET #	WT
1	1	BP9625-12	PL 3/8" X 9 5/8" X 1'-0" A36 BENT PLATE	VBSM-F1	12
2	1	BRKW-VBSM	WELDMENT BRACKET	VBSM-F3	16
3	2	L252525-8	L 2 1/2" X 2 1/2" X 1/4" X 8'-0" A36	VBSM-F5	67
4	4	BP6875-10	PL 1/4" X 6 7/8" X 10" A36 BENT PLATE	VBSM-F2	20
5	2	AL-333	L 3" X 3" X 1/4" X 3" A36	VBSM-F2	3
6	4	---	THREADED ROD 5/8" DIA. X 1'-6" Fy= 36KSI HDG	---	---
7	4	---	THREADED ROD 5/8" DIA. X 10" Fy= 36KSI HDG	---	---
8	1	---	BOLT 5/8" X 2 1/4" A325	---	---
9	2	---	BOLT 5/8" X 2" A325	---	---
10	2	---	BOLT 5/8" X 1 3/4" A325	---	---
11	21	FW-625	5/8" HDG USS FLAT WASHER	---	2
12	21	LW-625	5/8" HDG LOCK WASHER	---	0
13	21	NUT-625	5/8" HDG HEX NUT	---	2
GALVANIZED WT					122

NOTES:  
1. HOT-DIPPED GALVANIZED PER ASTM A123.

DRAWN BY: SP CHECKED BY: KW/FL

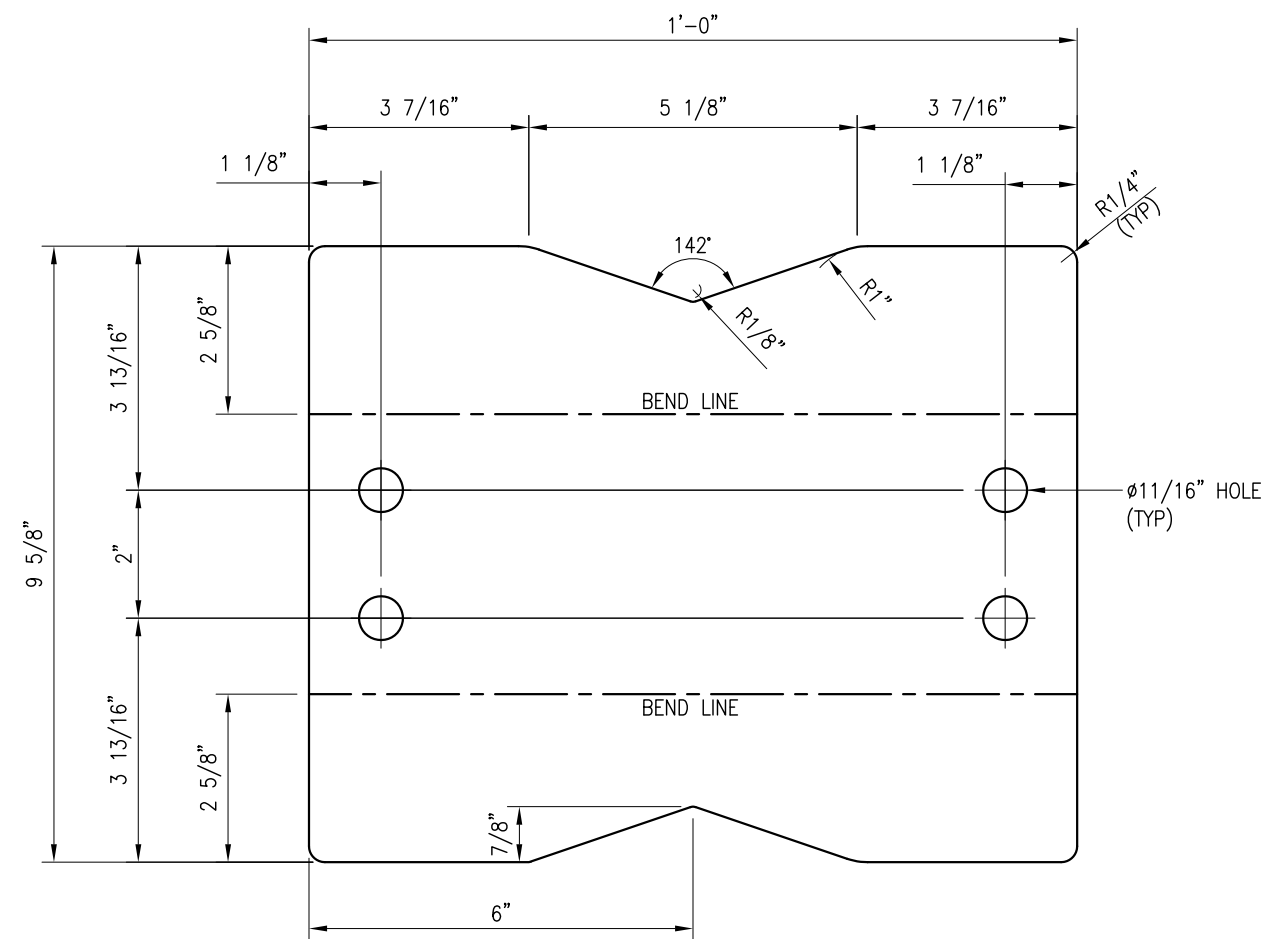
REV. DESCRIPTION BY DATE  
△ FIRST ISSUE SP 07/18/23

△  
△  
△

SHEET TITLE:

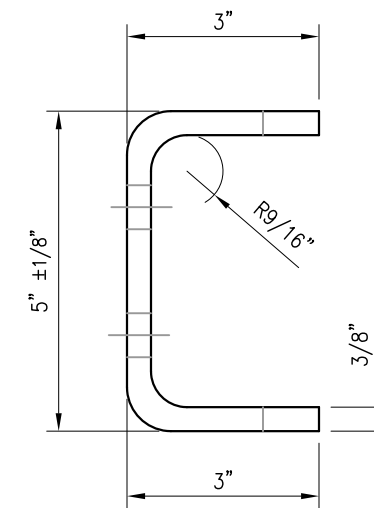
TES-SS-SFK3  
V-BRACING KIT

SHEET NUMBER: TES-SS-SFK3 REV #: 0



BEFORE BENDING

BP9625-12  
 PL 3/8" X 9 5/8" X 1'-0" A36 BENT PLATE  
 (12.45 LBS)



AFTER BENDING

NOTES:  
 1. HOT-DIPPED GALVANIZED PER ASTM A123.

DRAWN BY: SP CHECKED BY: KW/FL

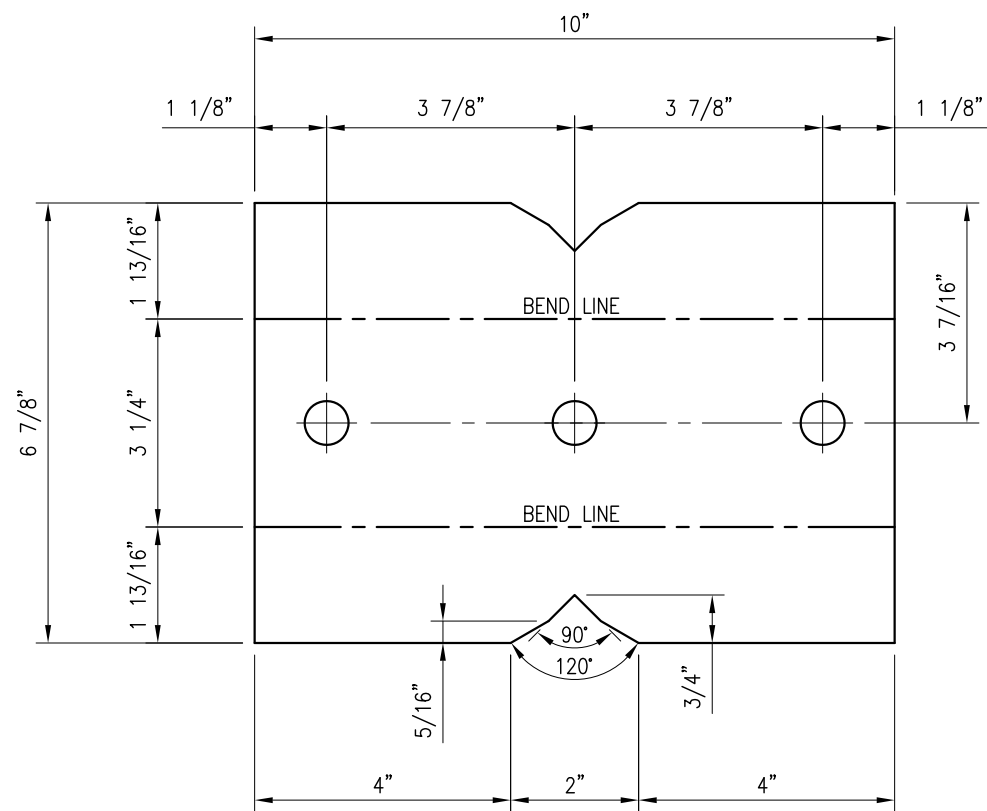
REV.	DESCRIPTION	BY	DATE
1	FIRST ISSUE	SP	07/18/23

SHEET TITLE:

FABRICATION DETAILS

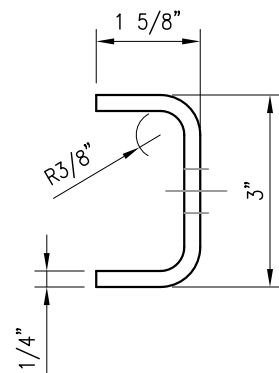
SHEET NUMBER: REV #:

VBSM-F1 0

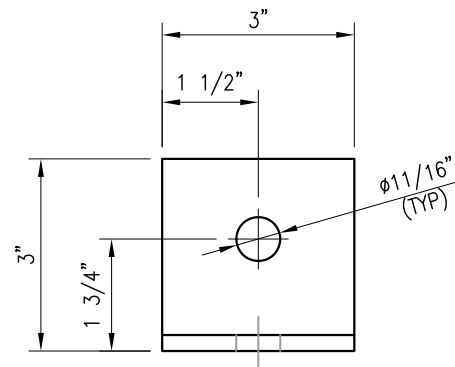


BEFORE BENDING

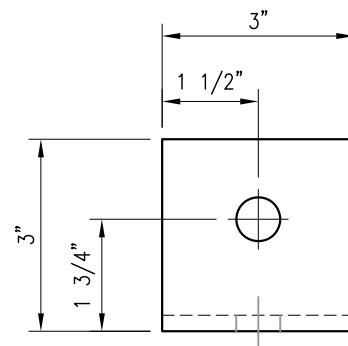
BP6875-10  
 PL 1/4" X 6 7/8" X 10" A36 BENT PLATE  
 (4.97 LBS)



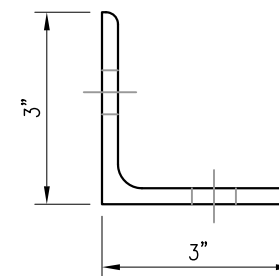
AFTER BENDING



PLAN VIEW



FRONT VIEW



SIDE VIEW

AL-333  
 L 3" X 3" X 1/4" X 3" A36  
 (1.25 LBS)

NOTES:  
 1. HOT-DIPPED GALVANIZED PER ASTM A123.

DRAWN BY: SP CHECKED BY: KW/FL

REV.	DESCRIPTION	BY	DATE
1	FIRST ISSUE	SP	07/18/23

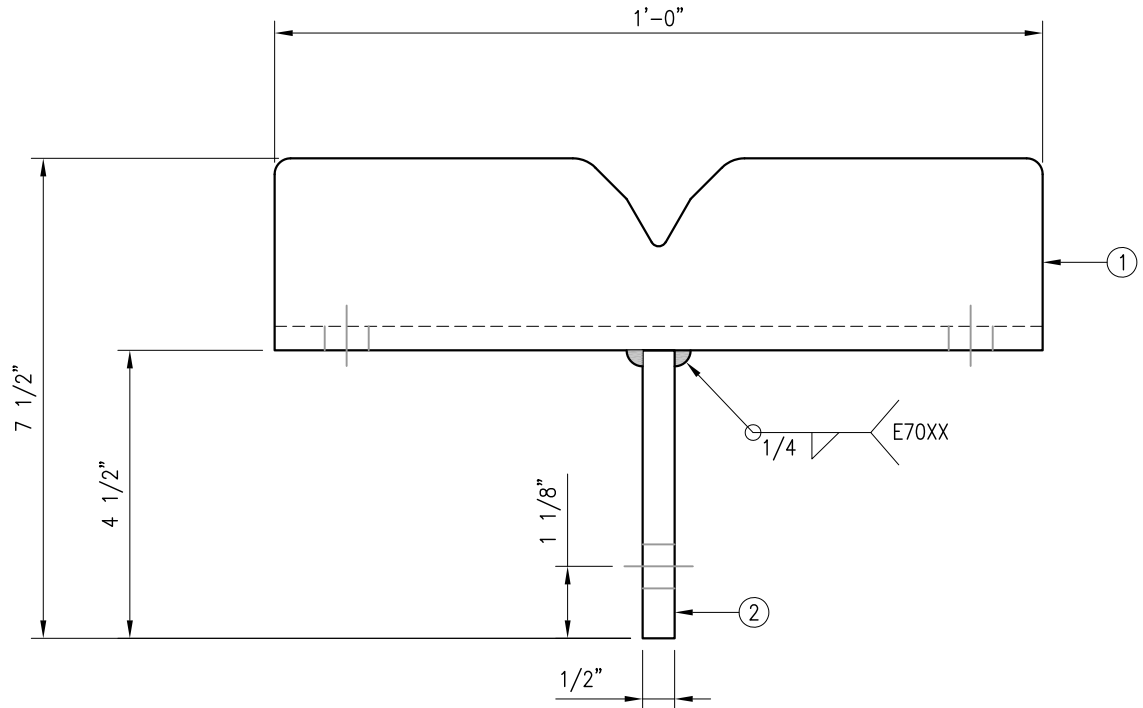
SHEET TITLE:

FABRICATION DETAILS

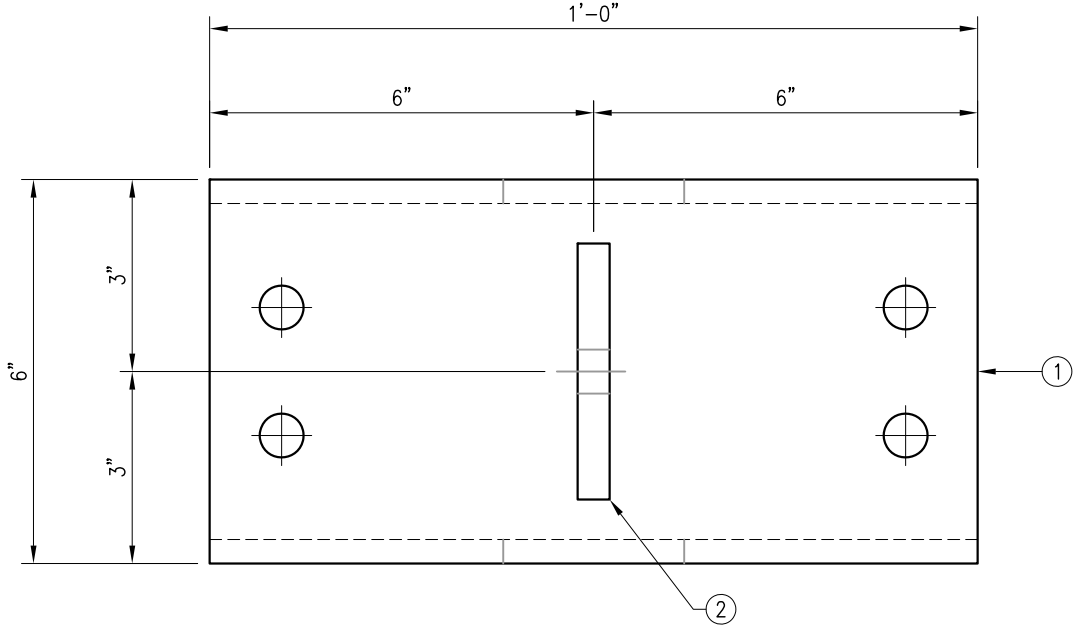
SHEET NUMBER: VBSM-F2 REV #: 0

BRKW-VBSM WELDMENT

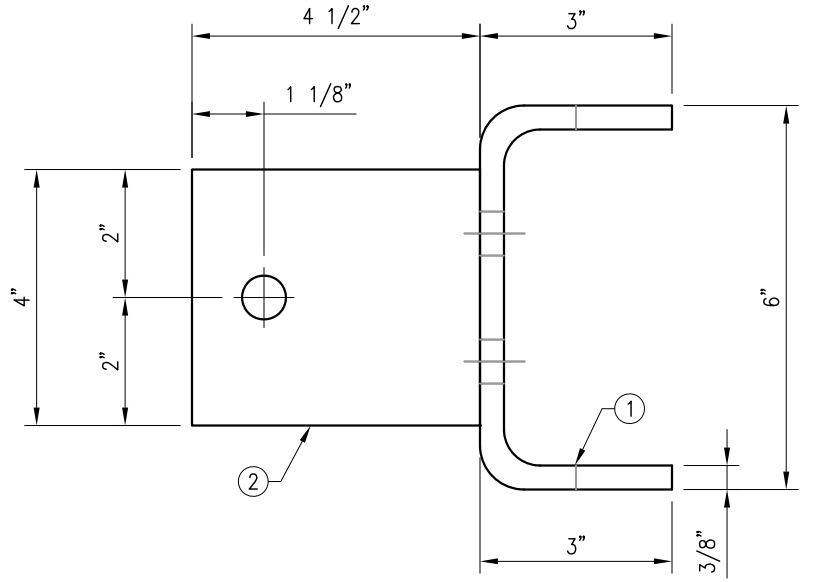
ITEM NO.	QTY.	PART NO.	DESCRIPTION	GRADE	SHEET #	WT	
1	1	BP10625-12	PL 3/8" X 10 5/8" X 1'-0"	A36	VBSM-F4	13.7	
2	1	PL500-4425	PL 1/2" X 4" X 0'-4 1/2"	A572	VBSM-F4	2.58	
						BLACK WT	16.3
						GALVANIZED WT	17



PLAN VIEW



FRONT VIEW



SIDE VIEW

BRKW-VBSM  
WELDMENT BRACKET  
(17 LBS)

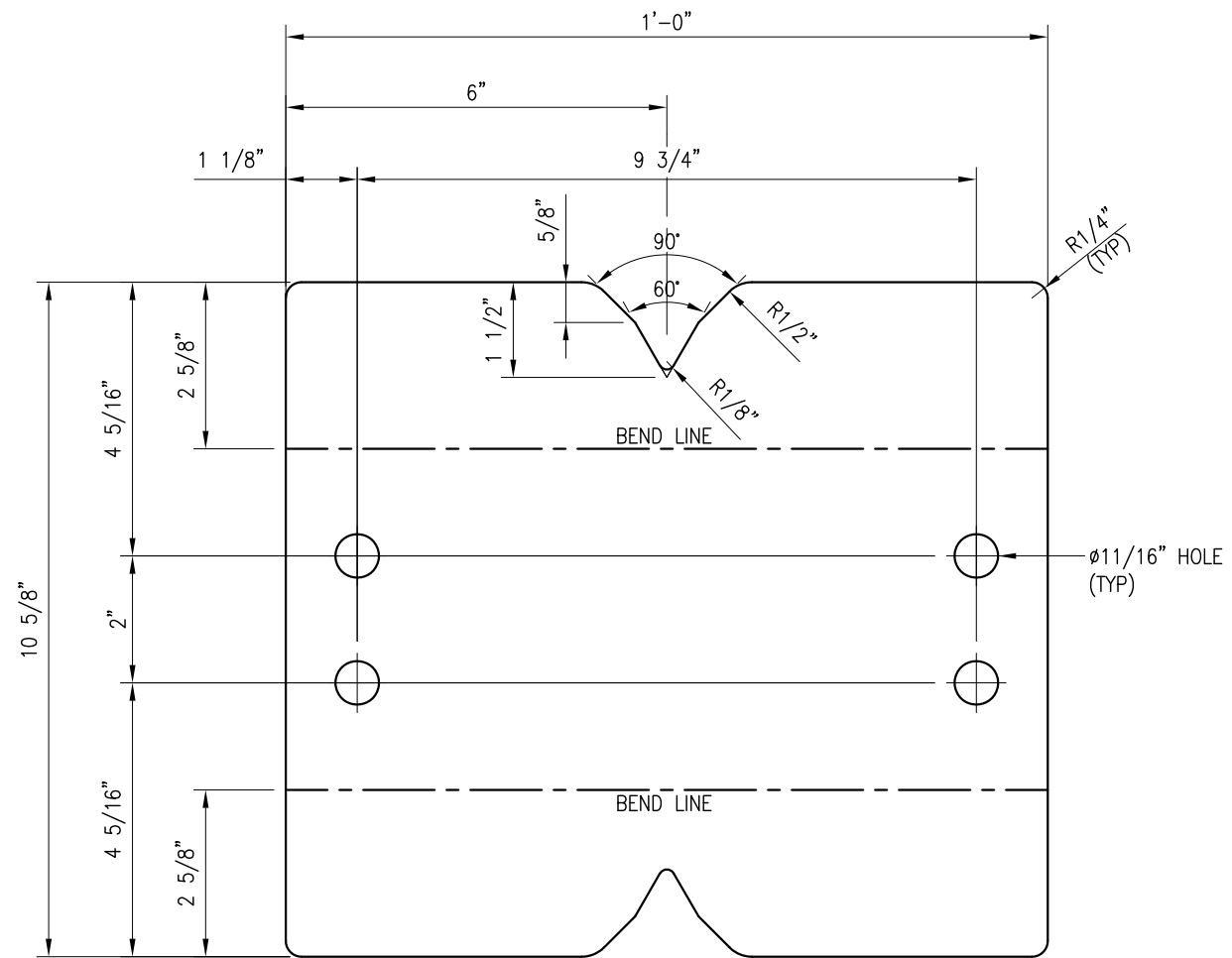
NOTES:  
1. HOT-DIPPED GALVANIZED PER ASTM A123.

DRAWN BY: SP CHECKED BY: KW/FL

REV.	DESCRIPTION	BY	DATE
1	FIRST ISSUE	SP	07/18/23

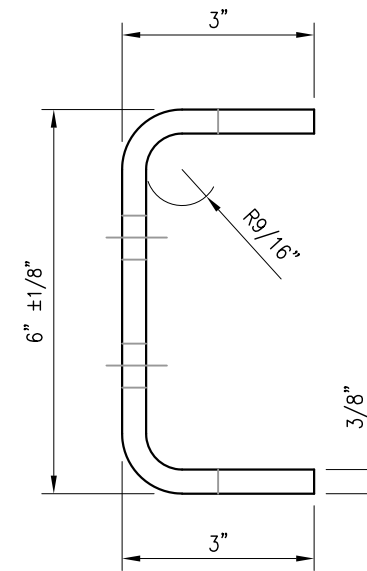
SHEET TITLE:  
FABRICATION DETAILS

SHEET NUMBER: VBSM-F3	REV #: 0
--------------------------	-------------

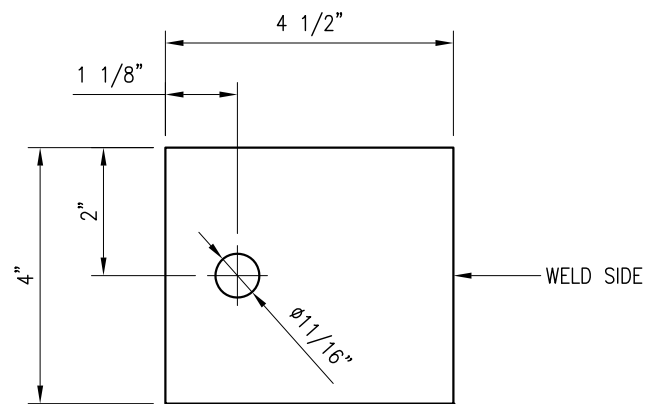


BEFORE BENDING

BP10625-12  
 PL 3/8" X 10 5/8" X 1'-0" A36 BENT PLATE  
 (13.74 LBS)



AFTER BENDING



PL500-4425  
 PL 1/2" X 4" X 4 1/2" A36  
 (2.58 LBS)

NOTES:  
 1. HOT-DIPPED GALVANIZED PER ASTM A123.

DRAWN BY: SP CHECKED BY: KW/FL

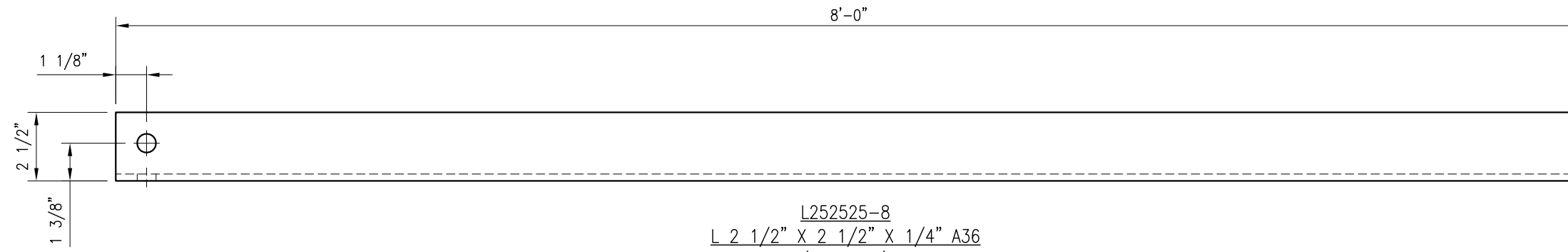
REV.	DESCRIPTION	BY	DATE
△	FIRST ISSUE	SP	07/18/23
△			
△			
△			

SHEET TITLE:

FABRICATION DETAILS

SHEET NUMBER: REV #:

VBSM-F4 0



L252525-8  
 L 2 1/2" X 2 1/2" X 1/4" A36  
 (33.5 LBS)

NOTES:  
 1. HOT-DIPPED GALVANIZED PER ASTM A123.

DRAWN BY: SP CHECKED BY: KW/FL

REV.	DESCRIPTION	BY	DATE
1	FIRST ISSUE	SP	07/18/23

SHEET TITLE:

FABRICATION DETAILS

SHEET NUMBER: VBSM-F5 REV #: 0