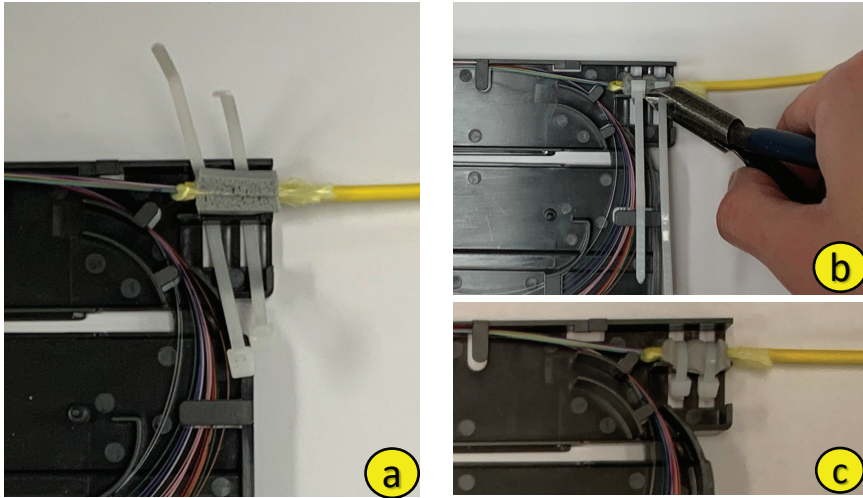


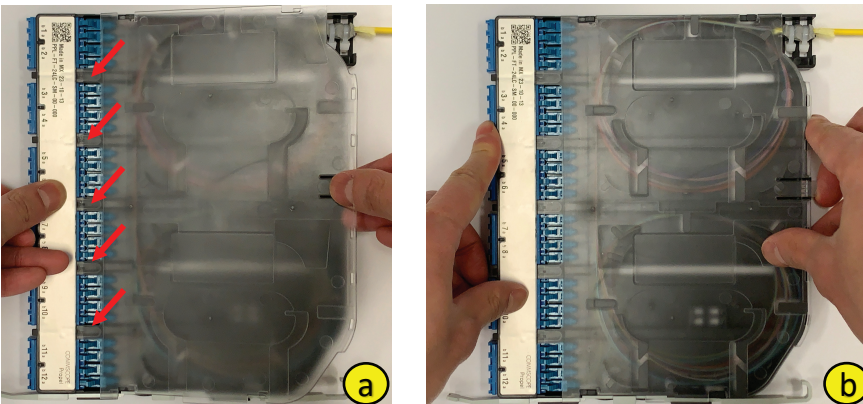
7 Secure Cable Jacket to Cassette

- Secure cable using two cable ties. (b) Snip off ends of cable ties close to head.
- Push the head downward until it is below the top of cassette wall.



8 Apply Cover

- Line the front tabs on the cover with the slot near the front of the base.
- Lay the cover flat on the base and ensure all the tabs on the side of the cover and base are lined up. With one hand holding the base, push cover forward with other hand to engage tabs. Double check the rear tab are also engaged to prevent the cover from sliding off.



12 Port Field Terminated Splice Cassette for Propel Panel

Tools & Material Required

QWIK II TERMINATION Tool Kit
(760242377, BASIC) OR
(760248225, PREMIUM)

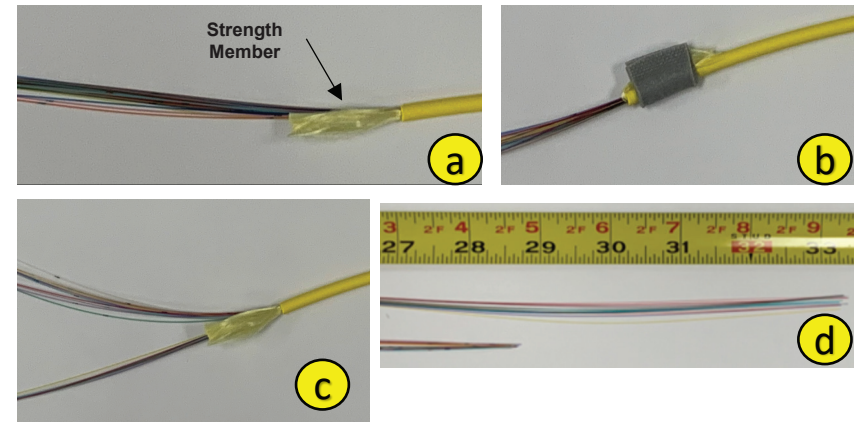
Recommended

- Fiber stripper
- Fiber cleaver
- Fiber cleaning solution, 2 oz.
- Scrap fiber can
- Lint-free cotton wipes
- Cable stripper
- Scissors
- 0.25/0.9mm cable clamp
- Marker
- Strip length template
- Instruction sheet



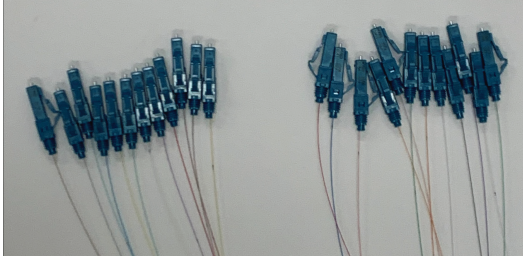
1 Prepare Feeder Cable for Installation

21 in. (53.3cm) of cable is required outside the splice cassette to allow for proper drawer movement inside the Propel Panel. "Cable Strip Length" is the recommended length of fiber to bring into cassette. "Fiber Cut Length" is the recommended cut length for routing inside the cassette. (a) Cable Strip Length: Strip 40in. (101.6cm) of cable jacket, then cut and leave approximately 1in. (2.5cm) of strength member. (b) Fold strength member alongside the cable jacket, then cut a 1in (2.5cm) piece of gray foam and secure cable with foam. (c) Fiber Cut Lengths: Separate fibers into two groups (1-12 and 13-24). (d) Cut fibers 1-12 to 28.5in. (72.4cm) and fibers 12-24 to 33.5in. (85.1cm).



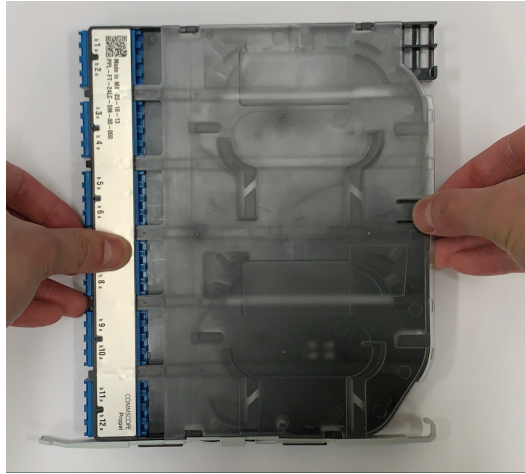
2 Install LC Connectors on Fibers

Install LC connectors on ends of fibers as described in installation instructions. **DO NOT** install boot on LC connectors.



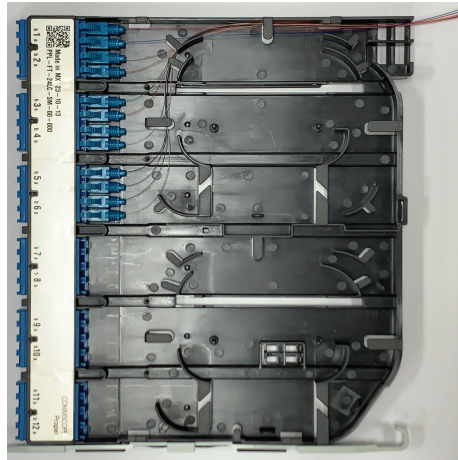
3 Remove Cassette Cover

Using thumb & finger, disengage rear tab by lifting and pulling backward to remove the cover.



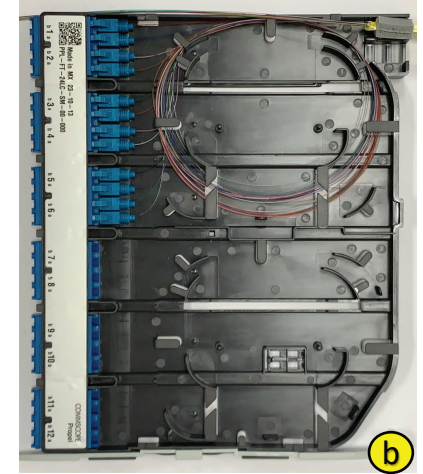
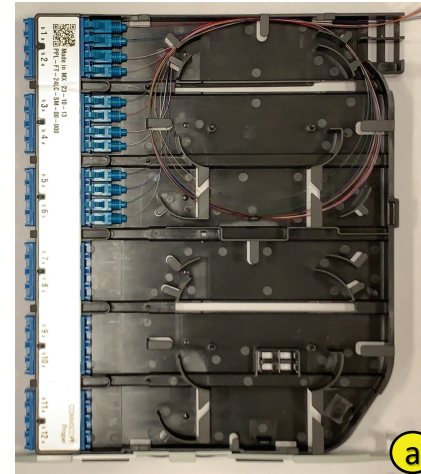
4 Install LC Connectors 1-12 into Appropriate Adapter Port

Route fiber clockwise as shown.



5 Route Fiber into Base

- Route a loop clockwise around the outer wall of cassette.
- Route a second loop following the same path as the first loop to complete the routing.



6 Install LC Connectors 13-24 Into Appropriate Adapter Port and Route Fibers Into Base

- Install LC connectors and route fibers following procedure described in step 5.
- Tuck remaining fibers under retaining fingers as shown.

