

Appendix

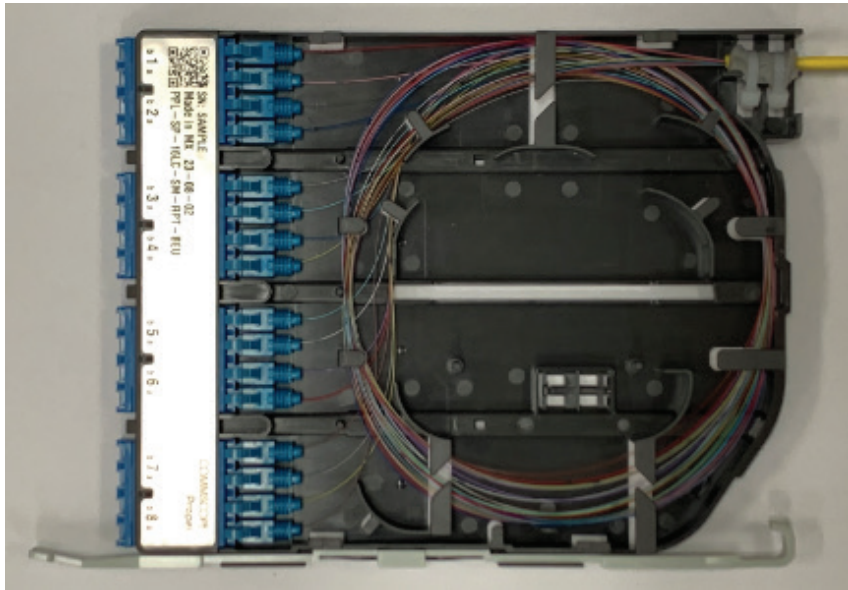


Image above: 8 Port Splice Cassette Routing

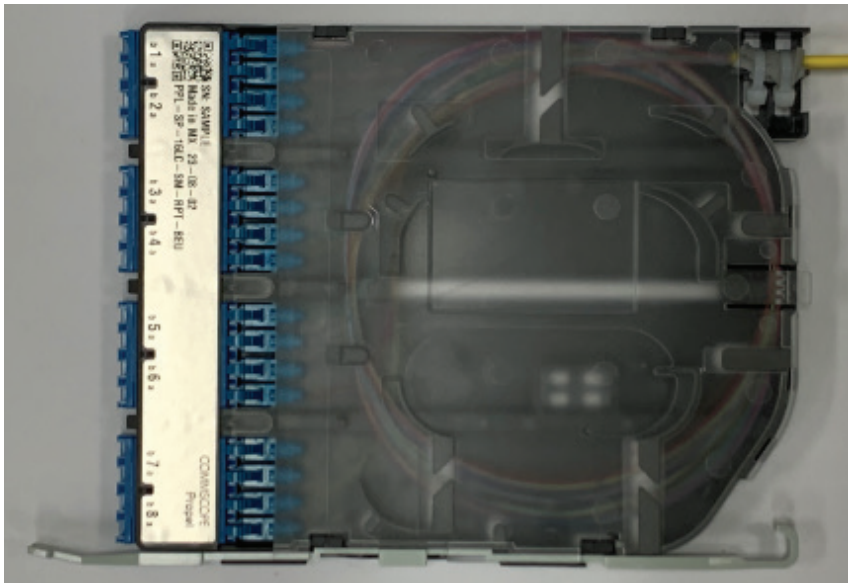


Image above: Completed 8 Port Splice Cassette



6/8 Port Field Terminated Splice Cassette for Propel Panel

Tools & Material Required

QWIK II TERMINATION Tool Kit (760242377, BASIC) or (760248225, PREMIUM)

Recommended

- (1) Fiber stripper
- (2) Fiber cleaver
- (3) Fiber cleaning solution, 2 oz.
- (4) Scrap fiber can
- (5) Lint-free cotton wipes
- (6) Cable stripper
- (7) Scissors
- (8) 0.25/0.9mm cable clamp
- (9) Marker
- (10) Strip length template
- (11) Instruction sheet



1 Determine Cassette Port Size and Feeder Cable Length

Determine the number of duplex LC ports, then refer to Table 1 for Cable strip and fiber cut length. "Cable Strip Length" is the recommended length of fiber to bring into cassette. "Fiber Cut Length" is the recommended cut length for routing inside the cassette.

Port Size	Cable Strip Length (in)	Fiber Cut Length (in)	Fiber Inside Propel Panel (in)
6 Port	35 (88.9 cm)	28.5 (72.4 cm)	21 (53.3 cm)
8 Port		32 (81.3 cm)	

Table 1: Pigtail and Feeder Lengths

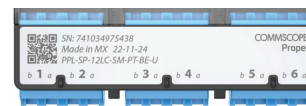


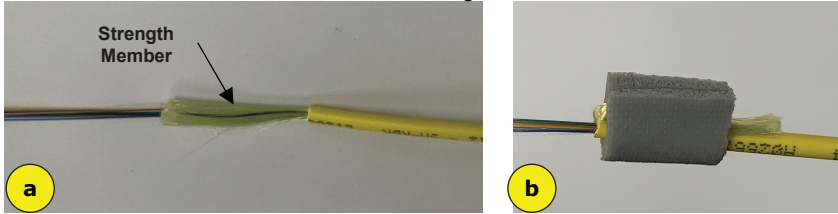
Image above: 6 Port



Image above: 8 Port

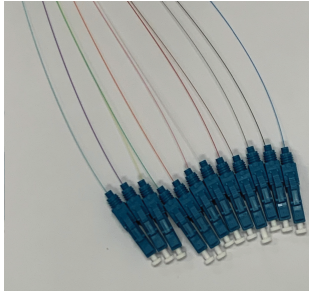
2 Prepare Feeder Cable For Installation

(a) Strip cable and cut fiber to length per table 1. Leave approximately 1in of strength member. (b) Cut provided gray foam to 1in (2.5cm) and wrap foam around smaller diameter cable and strength member for better securement.



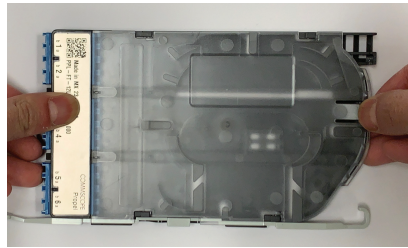
3 Install LC Connectors On Fibers

Install LC connectors on ends of fibers as described in installation instructions. DO NOT install boot on LC connectors.



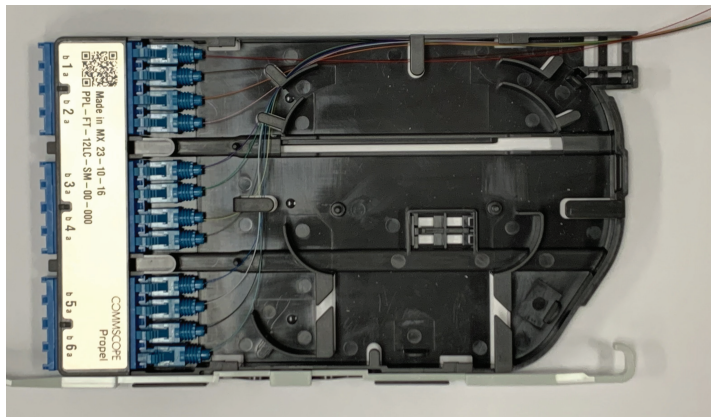
4 Remove Cassette Cover

Using thumb & finger, disengage rear tab by lifting and pulling backward to remove the cover.



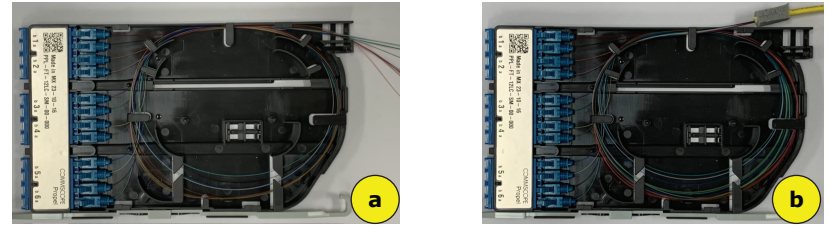
5 Install LC Connectors into Appropriate Adapter Port

Route fiber clockwise as shown.



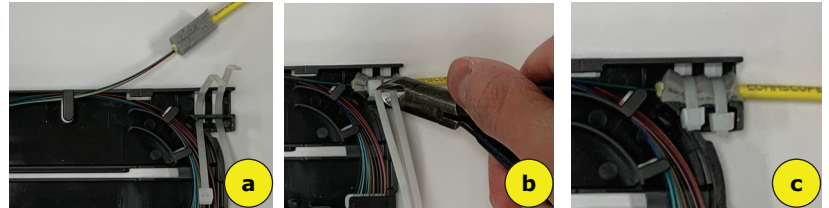
6 Route Fiber into Base

(a) Route a loop clockwise around the outer wall of cassette. (b) Route a second loop following the same path as the first loop to complete the routing.



7 Secure Cable Jacket to Cassette

(a) Secure cable using two cable ties. (b) Snip off ends of cable ties close to head. (c) Push the head downward until it is below the top of cassette wall.



8 Apply Cover

(a) Line the front tabs on the cover with the slot near the front of the base. (b) Lay the cover flat on the base and ensure all the tabs on the side of the cover and bases are lined up. With one hand holding the base, push cover forward with other hand to engage tabs. Double check the rear tab are also engaged to prevent the cover from sliding off.

