

4

3

2

1

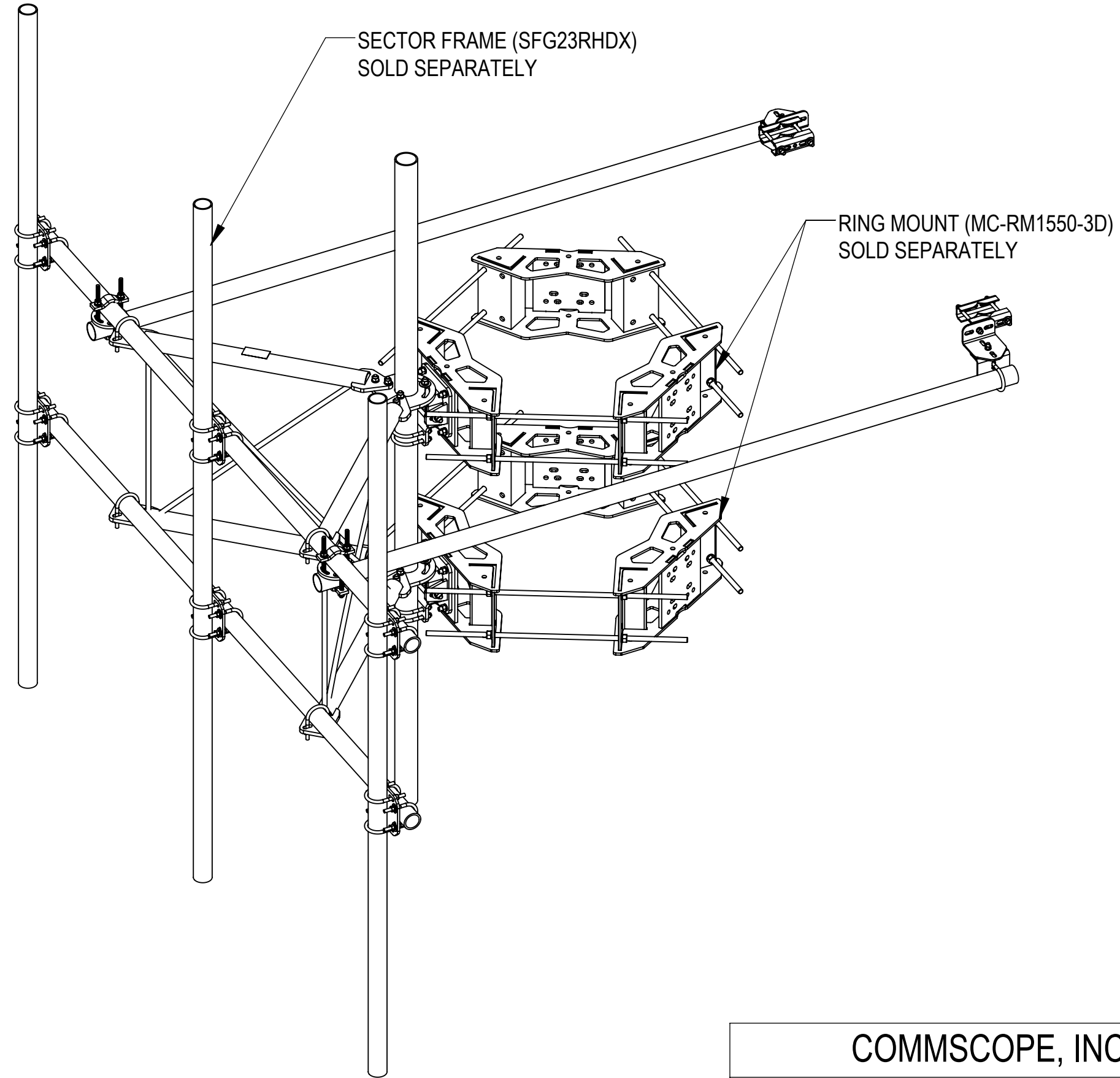
- 1.0 GENERAL NOTES
  - 1.1 ALL METRIC DIMENSIONS ARE IN BRACKETS [X. X]
  - 1.2 FOR PATENT INFO: <https://www.cs-pat.com>

- 2.0 DESIGN NOTES
  - 2.1 ANY HAZARDS OR OBSTRUCTIONS TO THE CLIMBING FACILITY AND SAFETY CLIMB MUST BE IDENTIFIED PRIOR TO INSTALLING THE APPURTENANCE. ADDITIONAL PRODUCTS MAY BE REQUIRED TO MAINTAIN THE INTEGRITY OF THE SAFETY CLIMB. DURING INSTALLATION, TEMPORARY AND/OR PERMANENT PRECAUTIONARY MEASURES SHOULD BE TAKEN TO PRESERVE THE CLIMBING FACILITY AND/OR SAFETY CLIMB.
  - 2.2 UP TO 2.0° TAPER AVAILABLE ON MODELS THAT SUPPORT ADJUSTMENT

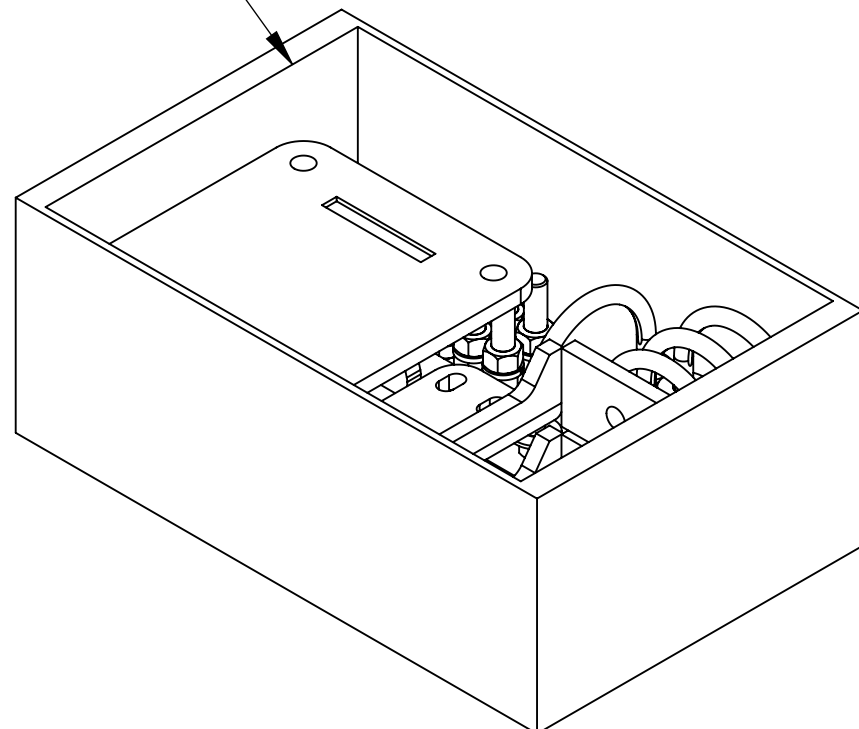
- 3.0 MANUFACTURING/SPECIAL REQUIREMENTS
  - 3.1 TIGHTEN ALL BOLTS SECURING FLAT PLATES BY THE TURN-OF-NUT METHOD. TIGHTEN ALL U-BOLTS USING TURN-OF-NUT METHOD WITH ATTENTION TO LEAVE EQUAL DISTANCE AND EQUAL FORCE ON EACH LEG OF THE U-BOLT. ALL FASTENERS SHOULD BE TIGHTENED PER AISC 6.5.2

- 4.0 TEST
- 5.0 PACKAGING
  - 5.1 PACKAGING SHALL MEET COMMSCOPE REQUIREMENTS PER DOCUMENT IS-PL-3005
  - 5.2 PRINTED DOCUMENT TO BE PLACED INSIDE POLYBAG AND THEN IN SHIPPING CONTAINER
  - 5.3 EXTRA HARDWARE MAY BE SUPPLIED, BAGGED AND SHIPPED

REVISIONS			
REV.	DESCRIPTION	DATE	APPROVED
A	INITIAL RELEASE	LS1146 16MAY23	YW1047 40171101CMO
B	UPDATED VIEWS FOR SFG2387-00 (ITEM 1) CHANGES	JL1183 10NOV23	YW1045 40182854CMO



SM-UMPTB-PACKAGE



DENSITY		lbs/in <sup>3</sup>
MASS	1361.21	lbs
VOLUME	14076.62	in <sup>3</sup>
SURFACE AREA	74284.19	in <sup>2</sup>
HEIGHT	9.0"	
LENGTH	43.4"	
WIDTH	4.2"	

COMMSCOPE, INC. OF NORTH CAROLINA											
TOLERANCES						SAP MATERIAL MASTER					
0 PLACE .X[X] ± 0.2[6.3]			2 PLACE .XXX[X] ± 0.060[1.5]			SM-UMPTB					
1 PLACE .XX[X] ± 0.12[3.0]			ANGLES ± 2°			FINISH					
FINISH						MATERIAL					
UNLESS OTHERWISE SPECIFIED DIMENSIONS ARE IN INCHES INTERPRET PER ANSI Y 14.5M-1994	NAME	DATE	TITLE								
	CE LS1146	16MAY23	BRACKET, TAPER, MCGX SECTOR FRAMES								
	RW JL1183	11/13/2023	SCALE								
	AD YW1045	11/13/2023	1:18			DOCUMENT NO.					
	RE JL1183	11/30/2023	SM-UMPTB								
ECN 40182854CMO											
SIZE	Auth Group	INSL	MODEL			DRAWING					
C			VERSION	STATUS	REVISION	VERSION	STATUS	REVISION	SHEET		
			01	RE	B	01	RE	B	1 OF 2		

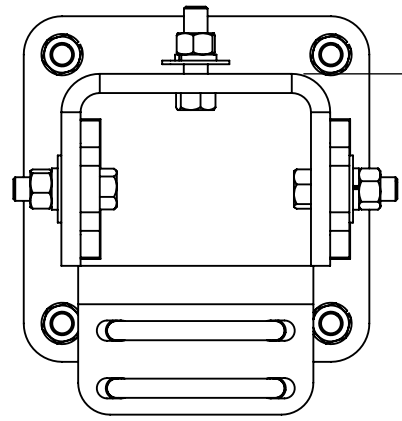
4

3

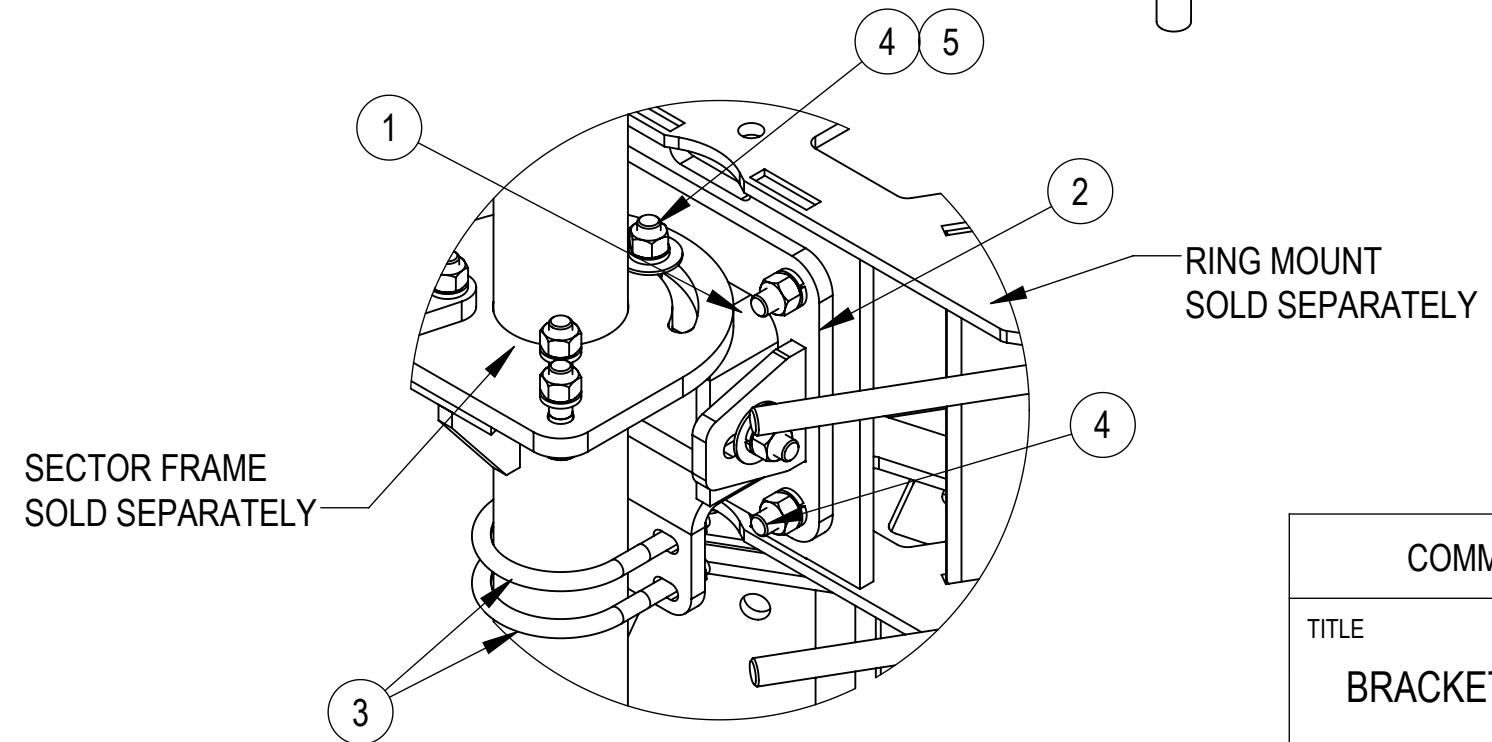
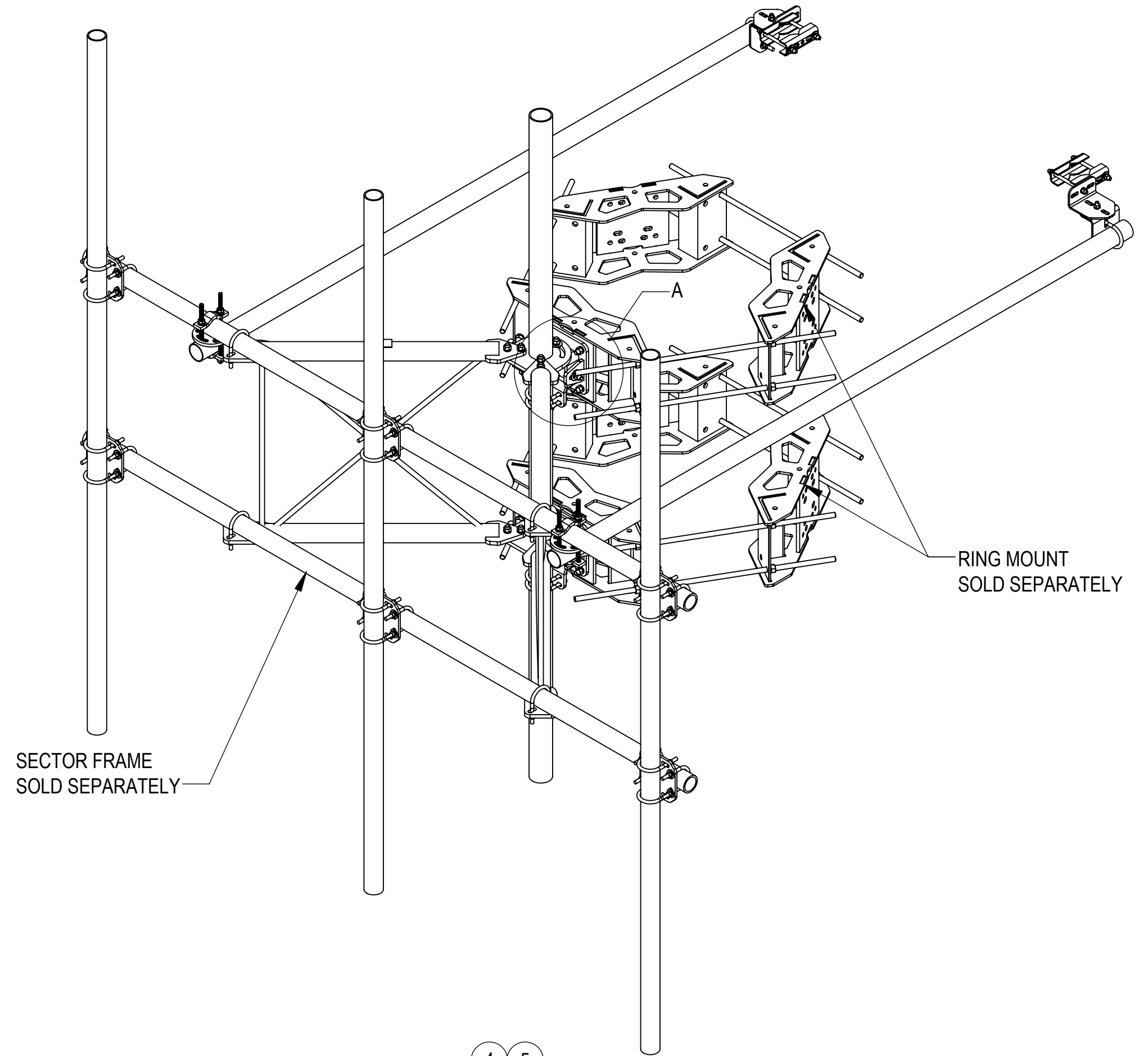
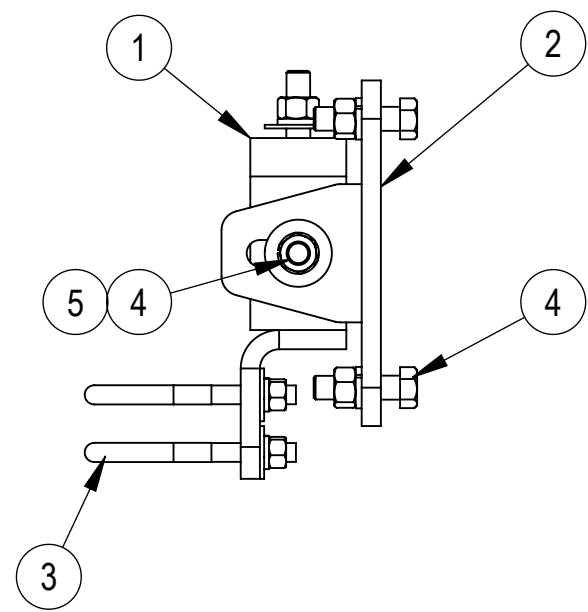
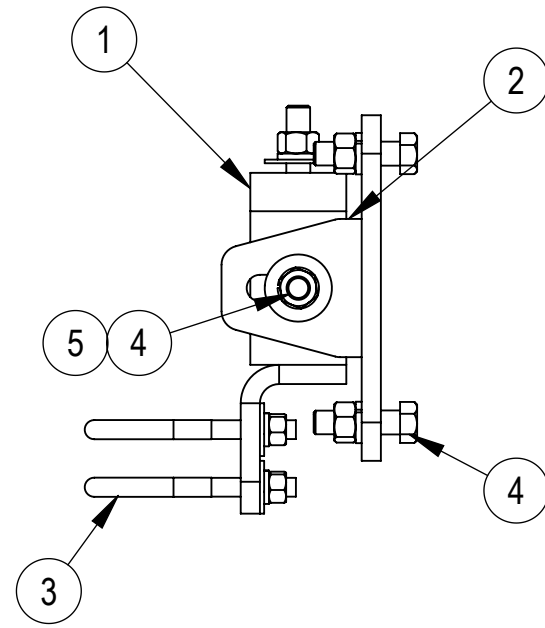
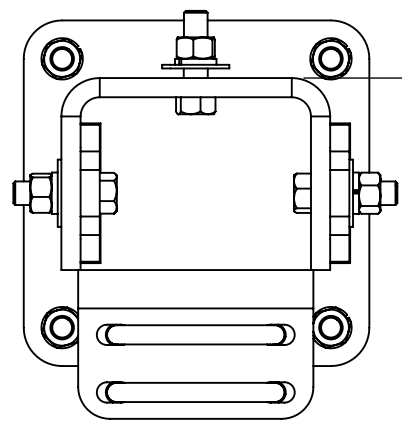
2

1

ATTACHED TO SECTOR FRAME AND RING MOUNT VIEW



ADJUSTABLE TO NECESSARY HEIGHT



DETAIL A  
SCALE 1 : 5

COMPONENT PART NUMBERS PROVIDED FOR ASSEMBLY PURPOSES;  
INDIVIDUAL COMPONENTS MAY BE SHIPPED AS PARTS WITHIN AN INCLUDED KIT.

ITEM	PART NO.	DESCRIPTION	QTY.	WEIGHT	NOTE NO.
1	SFG2387-00	WELDMENT, SFG2 AZIMUTH BRACKET	2	9.36 LBS	
2	SFG2388-00	WELDMENT, HD, TOWER LEG BRACKET	2	13.60 LBS	
3	GUB-4355	1/2" X 3-5/8" X 5" GALV U-BOLT	4	0.71 LBS	
4	GB-05225	5/8" X 2-1/4" GALV BOLT KIT	14	0.28 LBS	
5	GWf-05	5/8" GALV FLAT WASHER, 1.70D	6	0.06 LBS	

COMMScope, INC. OF NORTH CAROLINA					
TITLE BRACKET, TAPER, MCGX SECTOR FRAMES					
SIZE <b>C</b>	SCALE <b>1:16</b>	DOCUMENT NO. <b>SM-UMPTB</b>			
		DRAWING			SHEET
		VERSION	STATUS	REVISION	2 OF 2
		01	RE	B	