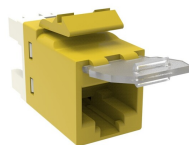


1375187-YL | SL110-DC-6-YL



SL-Series Modular Jack, RJ45, Cat6 Unshielded, with Dust Cover, Yellow

Product Classification

Regional Availability	Asia Australia/New Zealand EMEA Latin America
Portfolio	NETCONNECT®
Product Type	Modular jack
Product Series	SL Series

General Specifications

ANSI/TIA Category	6
Cable Type	Unshielded
Color	Yellow
Conductor Type	Solid Stranded
Integrated Dust Cover Type	Hinged
Mounting	SL Series faceplates and panels
Outlet Type	Standard
Termination Punchdowns, minimum	200 times
Termination Tool	SL Termination tool
Termination Type	IDC
Transmission Standards	ANSI/TIA-568-C.2 ISO/IEC 11801 Class E
Wiring	T568A T568B

Dimensions

Panel Cutout, recommended	14.78 x 20.07 mm (0.58 x 0.79 in)
Panel Thickness, recommended	1.6 mm 0.063 in
Height	16.26 mm 0.64 in
Width	14.48 mm 0.57 in
Depth	30.48 mm 1.2 in
Compatible Insulated Conductor Diameter, maximum	1.45 mm 0.057 in

1375187-YL | SL110-DC-6-YL

Contact Plating Thickness	1.27 µm
Compatible Conductor Gauge, solid	24–22 AWG
Compatible Conductor Gauge, stranded	26–24 AWG

Electrical Specifications

Remote Powering	Fully supports the safe delivery of power over LAN cabling described by IEEE 802.3bt (Type 4) and complies with the unmating under electrical load requirements prescribed by IEC 60512-99-002
PoE Durability	Supports IEEE 802.3bt Type 4 (90 W) applications greater than 3000 plug to jack mating cycles
Safety Voltage Rating	150 Vac

Material Specifications

Contact Base Material	Beryllium copper
Contact Plating Material	Gold
Material Type	PC+ABS

Mechanical Specifications

Plug Retention Force, minimum	89 N 20.008 lbf
Plug to Jack Mating Cycles	Complies to IEC 60603-7 series

Environmental Specifications

Operating Temperature	-40 °C to +70 °C (-40 °F to +158 °F)
Flammability Rating	UL 94 V-0
Safety Standard	CSA cUL

Packaging and Weights

Included	Shutter Strain relief cap
Packaging quantity	1
Packaging Type	Bag

Regulatory Compliance/Certifications

Agency	Classification
CHINA-ROHS	Below maximum concentration value
REACH-SVHC	Compliant as per SVHC revision on www.commscope.com/ProductCompliance
ROHS	Compliant

1375187-YL | SL110-DC-6-YL

UK-ROHS

Compliant

