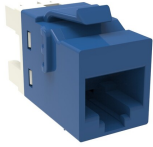


# 2291217-BL | KJ510-BL

---



## KJ-Series Modular Jack, RJ45, Cat5e Unshielded, Blue

### Product Classification

<b>Regional Availability</b>	Asia   Australia/New Zealand   EMEA   Latin America   North America
<b>Portfolio</b>	CommScope®
<b>Product Type</b>	Modular jack
<b>Product Series</b>	KJ Series

### General Specifications

<b>ANSI/TIA Category</b>	5e
<b>Cable Type</b>	Unshielded
<b>Color</b>	Blue
<b>Conductor Type</b>	Solid   Stranded
<b>Integrated Dust Cover Type</b>	None
<b>Mounting</b>	Hubbell® faceplates   Leviton® faceplates   Panduit® faceplates
<b>Outlet Type</b>	Keystone
<b>Termination Tool</b>	110 Punchdown tool   SL Termination tool
<b>Termination Type</b>	IDC
<b>Transmission Standards</b>	ANSI/TIA-568-C.2   ISO/IEC 11801 Class D
<b>Wiring</b>	T568A   T568B

### Dimensions

<b>Panel Cutout, recommended</b>	14.79 x 19.31 mm (0.58 x 0.76 in)
<b>Panel Thickness, recommended</b>	1.6 mm   0.063 in
<b>Height</b>	16.13 mm   0.635 in
<b>Width</b>	16.48 mm   0.649 in
<b>Depth</b>	30.48 mm   1.2 in
<b>Compatible Insulated Conductor Diameter, maximum</b>	1.27 mm   0.05 in

# 2291217-BL | KJ510-BL

---

<b>Contact Plating Thickness</b>	1.27 $\mu$ m
<b>Compatible Conductor Gauge, solid</b>	24–22 AWG
<b>Compatible Conductor Gauge, stranded</b>	26–24 AWG

## Electrical Specifications

<b>Remote Powering</b>	Fully supports the safe delivery of power over LAN cabling described by IEEE 802.3bt (Type 4) and complies with the unmating under electrical load requirements prescribed by IEC 60512-99-002
<b>PoE Durability</b>	Supports IEEE 802.3bt Type 4 (90 W) applications after 3000 plug to jack mating cycles

## Material Specifications

<b>Contact Base Material</b>	Beryllium copper
<b>Contact Plating Material</b>	Gold
<b>Material Type</b>	PC+ABS

## Mechanical Specifications

<b>Plug to Jack Mating Cycles</b>	Complies to IEC 60603-7 series
-----------------------------------	--------------------------------

## Environmental Specifications

<b>Flammability Rating</b>	UL 94 V-0
----------------------------	-----------

## Packaging and Weights

<b>Packaging quantity</b>	1
<b>Packaging Type</b>	Bag

## Regulatory Compliance/Certifications

<b>Agency</b>	<b>Classification</b>
CHINA-ROHS	Below maximum concentration value
REACH-SVHC	Compliant as per SVHC revision on <a href="https://www.commscope.com/ProductCompliance">www.commscope.com/ProductCompliance</a>
ROHS	Compliant
UK-ROHS	Compliant

