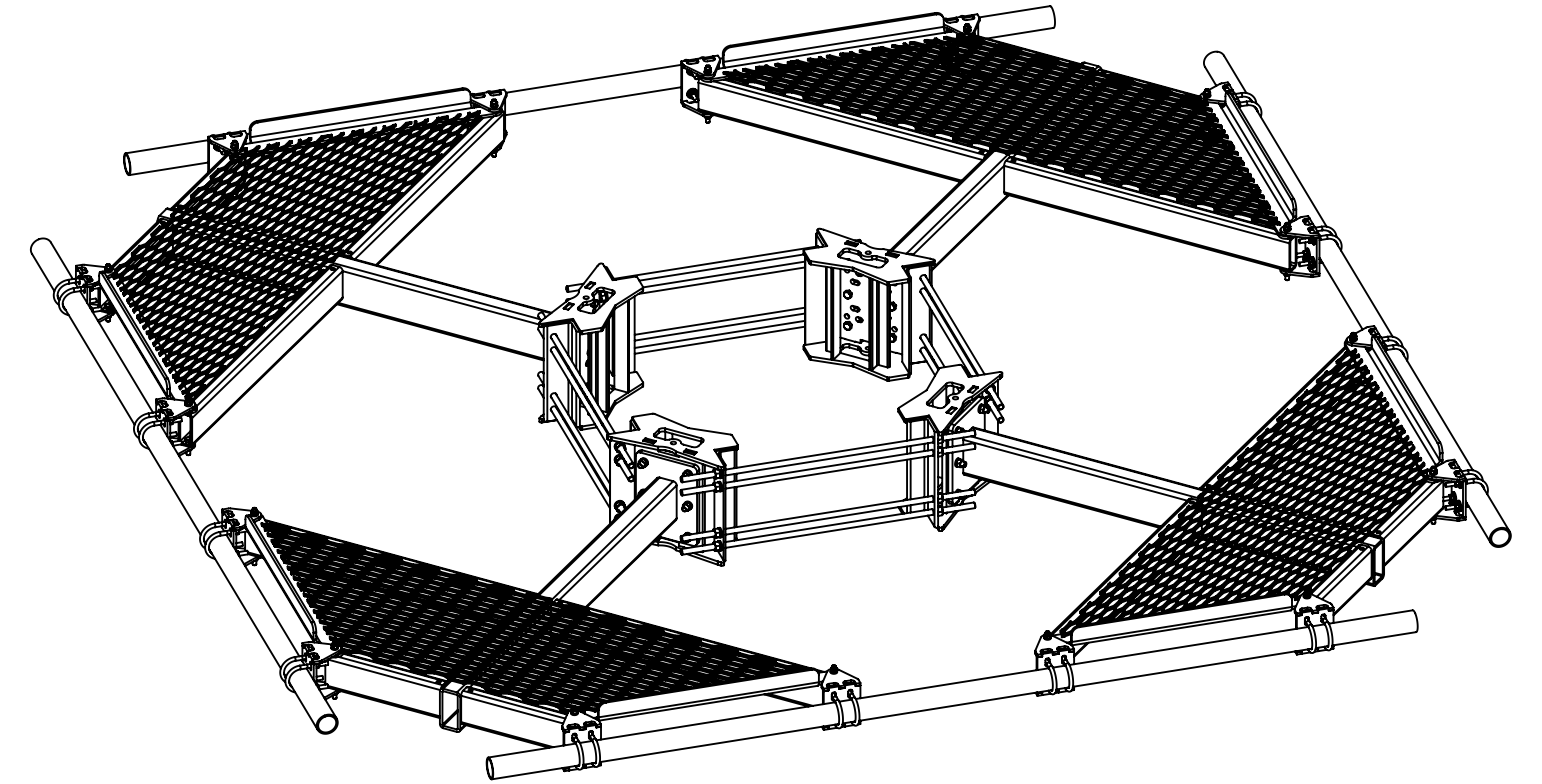
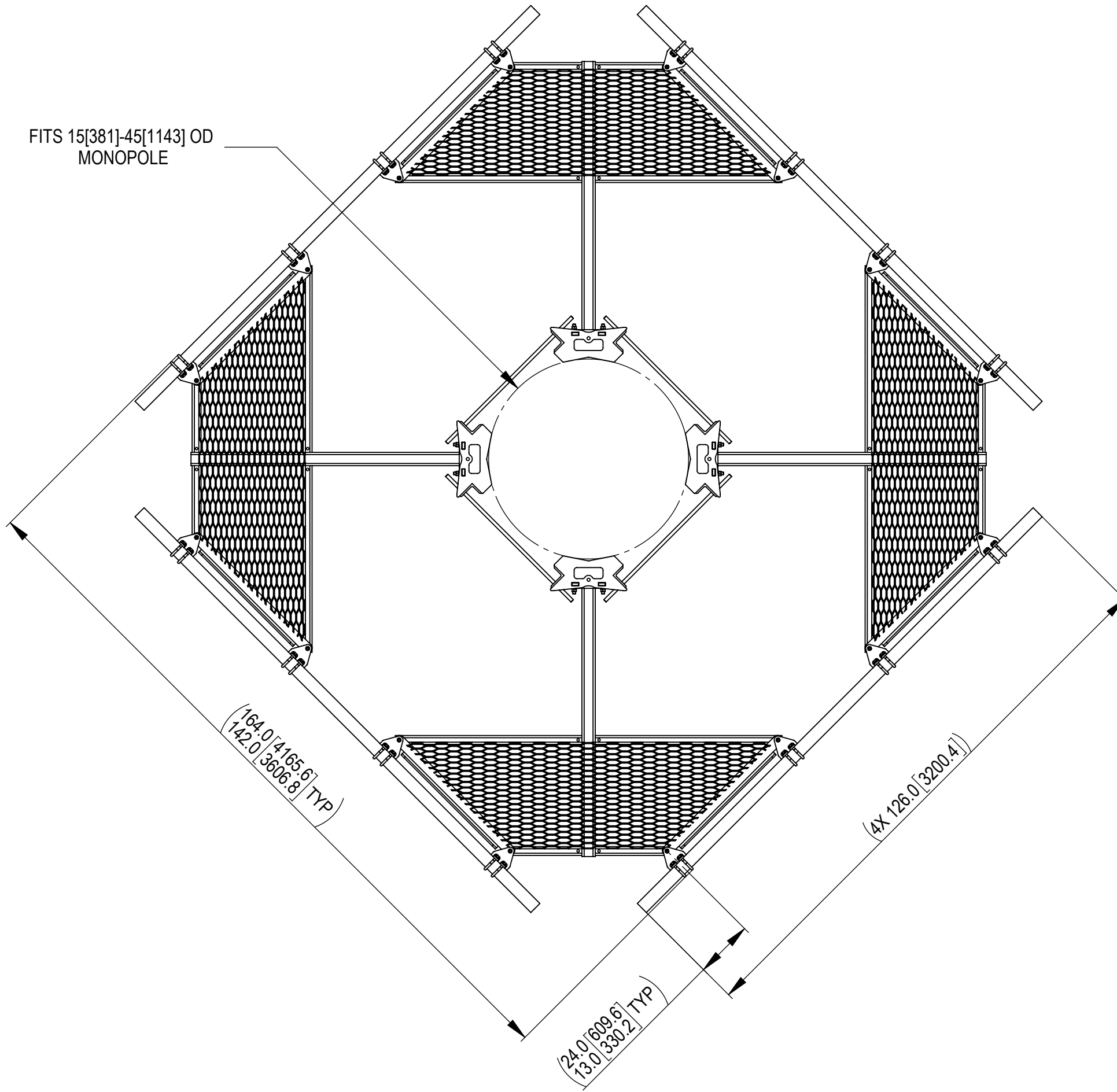

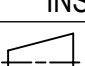


- 1.0 GENERAL NOTES
 1.1 ALL METRIC DIMENSIONS ARE IN BRACKETS [X.X]
 1.2 FOR PATENT INFO: <https://www.cs-pat.com>
- 2.0 DESIGN NOTES
 2.1 USE DRAWING MC-RMHD-1545-4 TO ASSEMBLE RING MOUNT
 2.2 ANY HAZARDS OR OBSTRUCTIONS TO THE CLIMBING FACILITY AND SAFETY CLIMB MUST BE IDENTIFIED PRIOR TO INSTALLING THE APPURTENANCE. ADDITIONAL PRODUCTS MAY BE REQUIRED TO MAINTAIN THE INTEGRITY OF THE SAFETY CLIMB. DURING INSTALLATION, TEMPORARY AND/OR PERMANENT PRECAUTIONARY MEASURES SHOULD BE TAKEN TO PRESERVE THE CLIMBING FACILITY AND/OR SAFETY CLIMB.
- 3.0 MANUFACTURING/SPECIAL REQUIREMENTS
 3.1 TIGHTEN ALL BOLTS SECURING FLAT PLATES BY THE TURN-OF-NUT METHOD. TIGHTEN ALL U-BOLTS USING TURN-OF-NUT METHOD WITH ATTENTION TO LEAVE EQUAL DISTANCE AND EQUAL FORCE ON EACH LEG OF THE U-BOLT.
- 4.0 TEST
- 5.0 PACKAGING
 5.1 PACKAGING SHALL MEET COMMSCOPE REQUIREMENTS PER DOCUMENT IS-PL-3005
 5.2 PRINTED DOCUMENT TO BE PLACED INSIDE POLYBAG AND THEN IN SHIPPING CONTAINER
 5.3 EXTRA HARDWARE MAYBE SUPPLIED, BAGGED AND SHIPPED

REVISIONS			
REV.	DESCRIPTION	DATE	APPROVED
A	INITIAL RELEASE	YMENG 19OCT21	BA1025 14658
B	MCPM-2005-00 WAS MCPM-2000-00, GB-0524A WAS GB-0522A, ALL U-BOLTS CHANGED TO GUB-4352	YMENG 08OCT22	BA1025 40156827CMO



COMMSCOPE, INC. OF NORTH CAROLINA											
TOLERANCES					SAP MATERIAL MASTER						
1 PLACE .X[X] ± 0.25[6.3]			3 PLACE .XXX[X] ± 0.060[1.5]		MC-PM10M4-B						
2 PLACE .XX[X] ± 0.12[3.0]			ANGLES ± 2°								
FINISH					MATERIAL						
UNLESS OTHERWISE SPECIFIED DIMENSIONS ARE IN INCHES INTERPRET PER ANSI Y 14.5M-1994	NAME		DATE		TITLE						
	CE	YMENG	10/19/2021		ATLAS4, 10' FP, NO ANT PIPE						
	RW	YMENG	01/10/2023								
	AD	MM1298	01/11/2023								
	RE	YMENG	01/11/2023								
ECN 40156827CMO				SCALE						DOCUMENT NO.	
				1:48		MC-PM10M4-B					
SIZE		Auth Group		INSL		MODEL		DRAWING		SHEET	
C		 				VERSION		STATUS			1 OF 6
						01		RE			
								01			
								RE			
								B			

DENSITY	1922.58	lbs/in ³
MASS	7857.41	lbs
VOLUME	53836.01	in ³
SURFACE AREA	15[381]	in ²
HEIGHT	164[4166]	
LENGTH	164[4166]	
WIDTH	164[4166]	

4

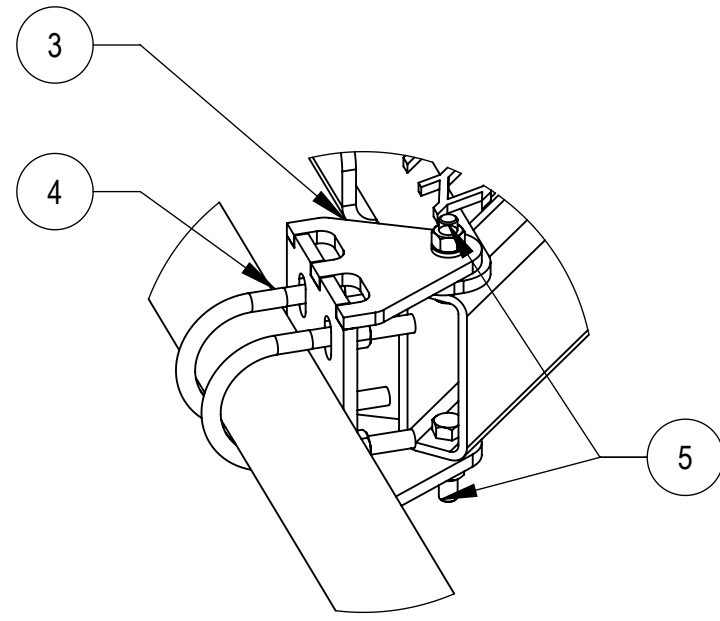
3

2

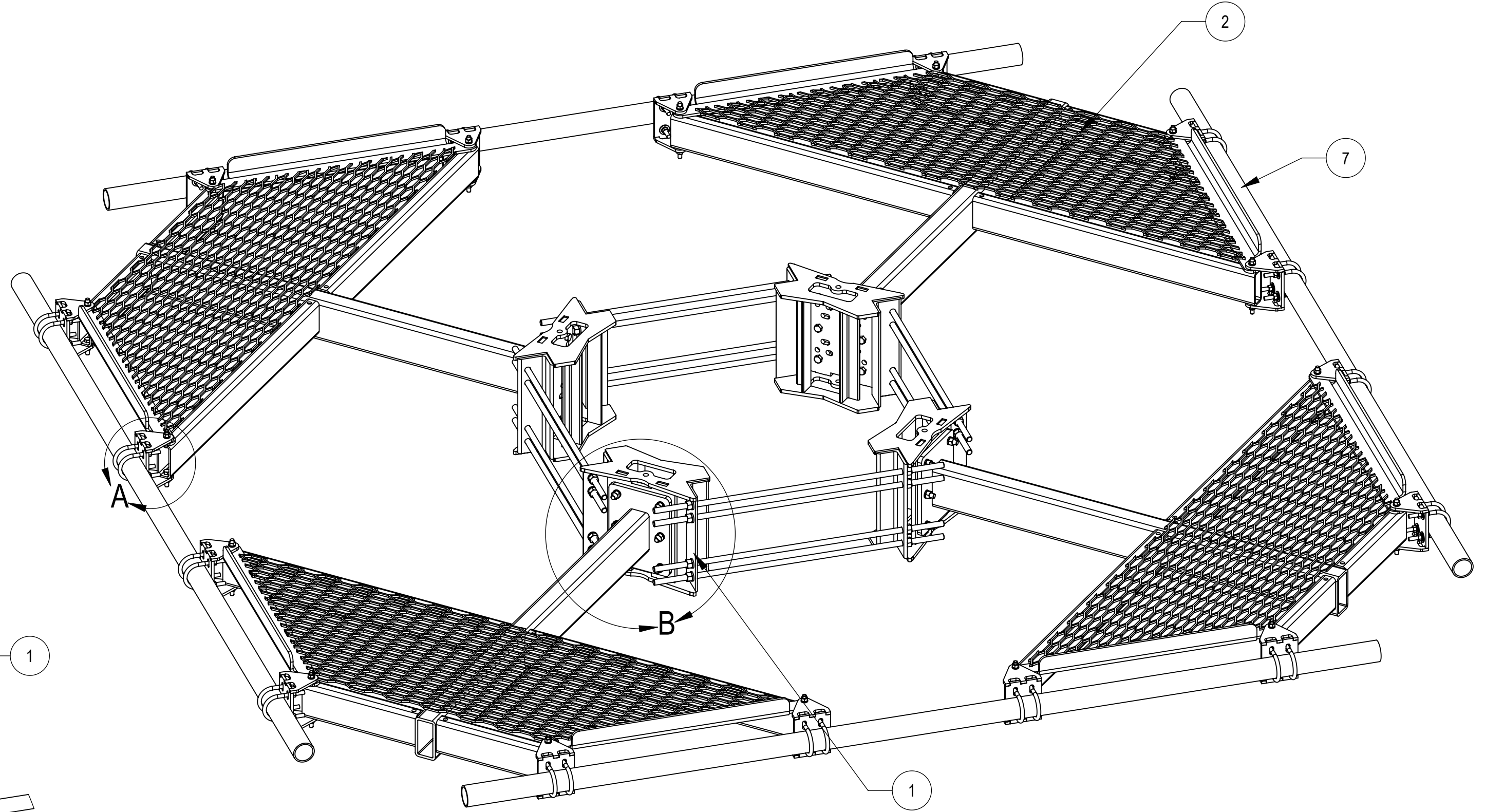
1

D

D

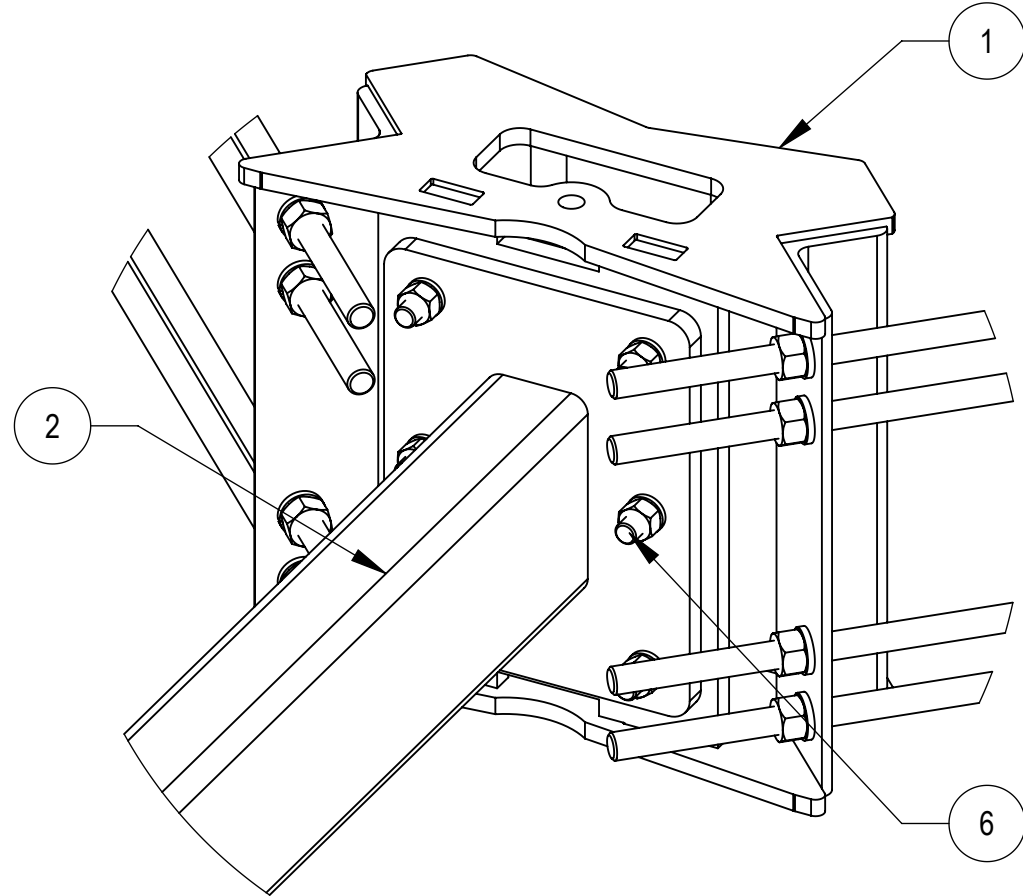


DETAIL A
SCALE 1 : 5



C

C



DETAIL B
SCALE 1 : 5


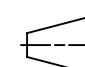
B

B

COMPONENT PART NUMBERS PROVIDED FOR ASSEMBLY PURPOSES;
INDIVIDUAL COMPONENTS MAY BE SHIPPED AS PARTS WITHIN AN INCLUDED KIT.

ITEM	PART NO.	DESCRIPTION	QTY.	WEIGHT	NOTE NO.
1	MC-RMHD-1545-4	4 SECTOR RING MOUNT, 15"-45" POLE	1	386.57LBS	
2	MC-PM4-1000	WELDMENT, CO-LOCATION PLATFORM	4	289.67 LBS	
3	MCPM-2005-00	BRACKET, PIPE MOUNTING	16	5.47 LBS	
4	GUB-4352	1/2" X 3" X 5-1/4" GALV U-BOLT	32	0.71 LBS	
5	GB-04205	1/2" X 2" GALV BOLT KIT	32	0.16 LBS	
6	GB-0524A	5/8" X 2-1/2" GALV BOLT KIT (A325)	24	0.30 LBS	
7	MT-546-126	PIPE, 2.875"OD X 126"	4	61.05 LBS	



COMMSCOPE, INC. OF NORTH CAROLINA					
TITLE ATLAS4, 10' FP, NO ANT PIPE					
SIZE C	SCALE 1:48	DOCUMENT NO. MC-PM10M4-B			
 		DRAWING			SHEET 2 OF 6
		VERSION 01	STATUS RE	REVISION B	

© 2022 CommScope, Inc. Confidential

4

3

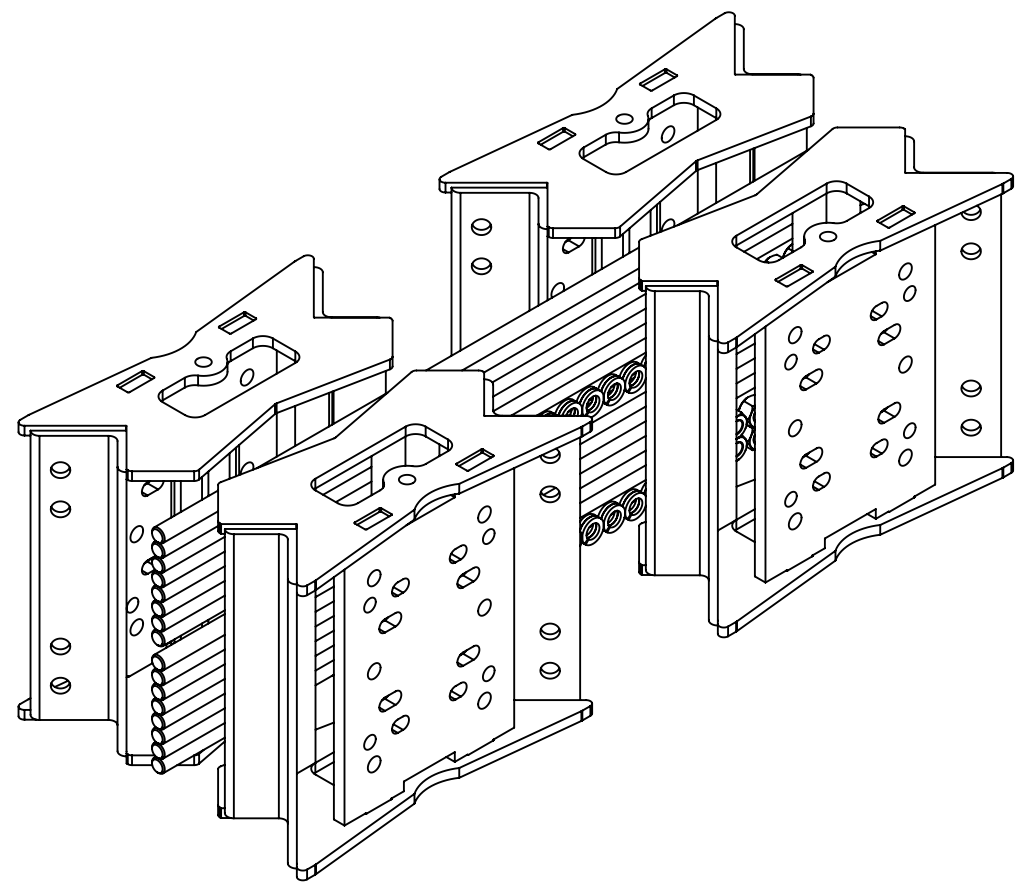
2

1

A

A

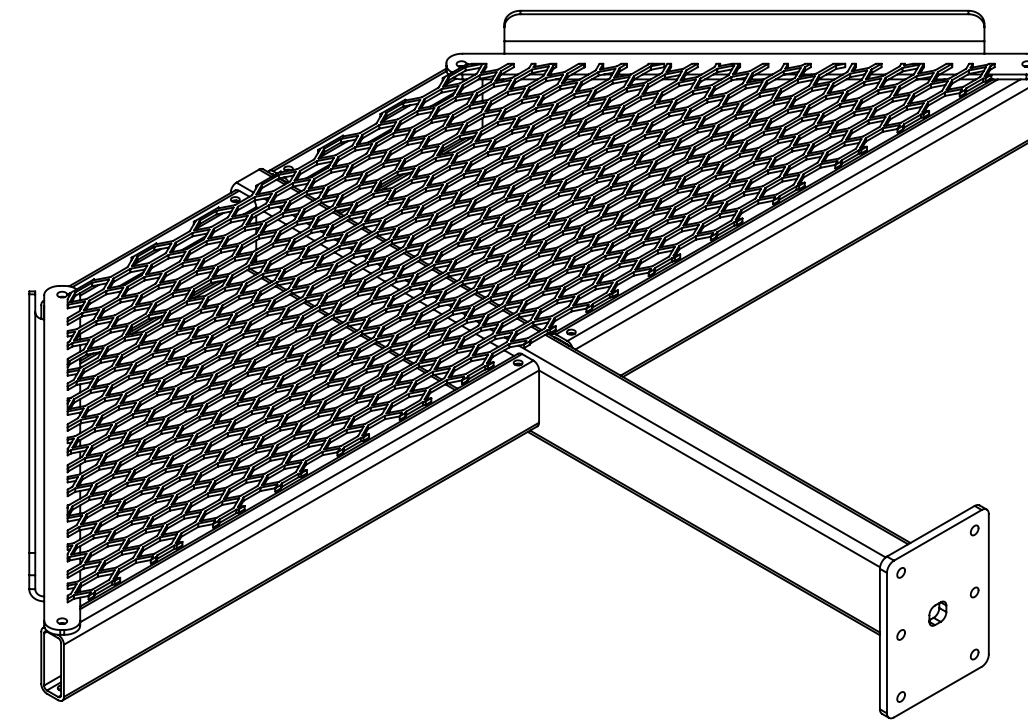




1X

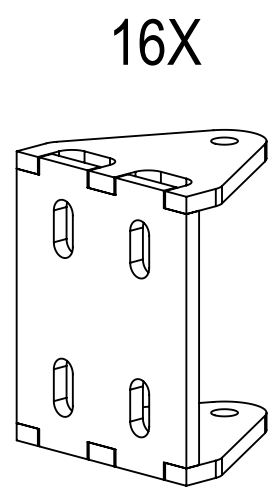
MC-RMHD-1545-4

(INCLUDING 1X RMHD1545-4-1000, 16X MT38440, 32X GWL-06 AND 32X GN-06)



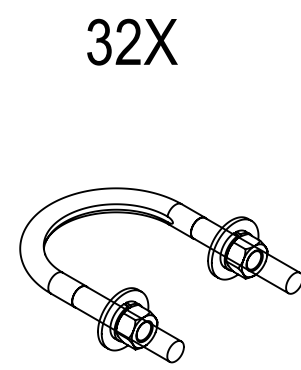
4X

MC-PM4-1000



16X

MCPM-2005-00



32X

GUB-4352



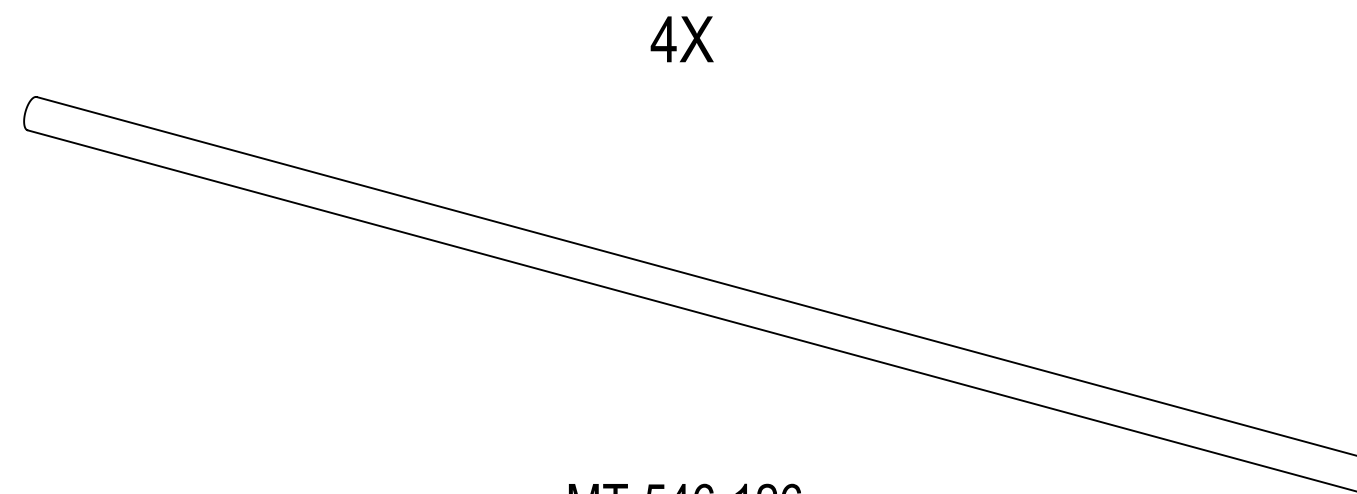
32X

GB-04205



24X

GB-0524A

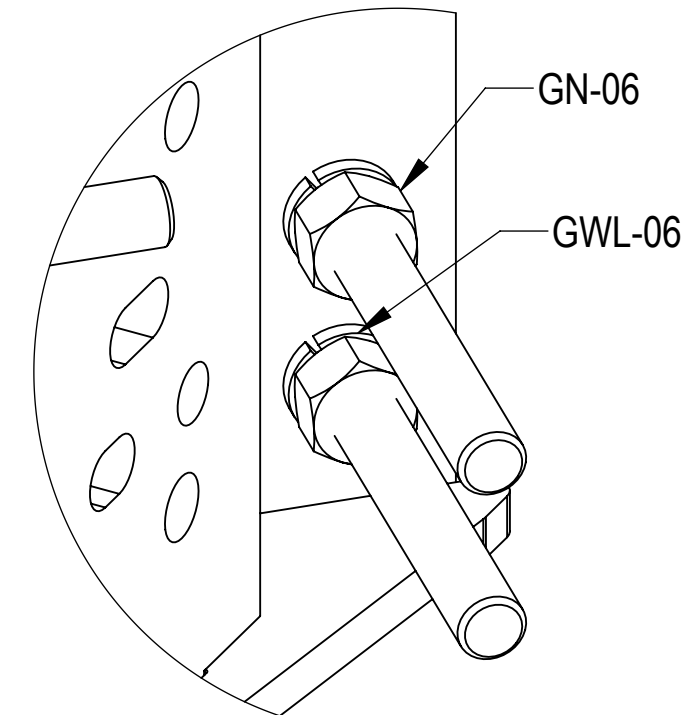
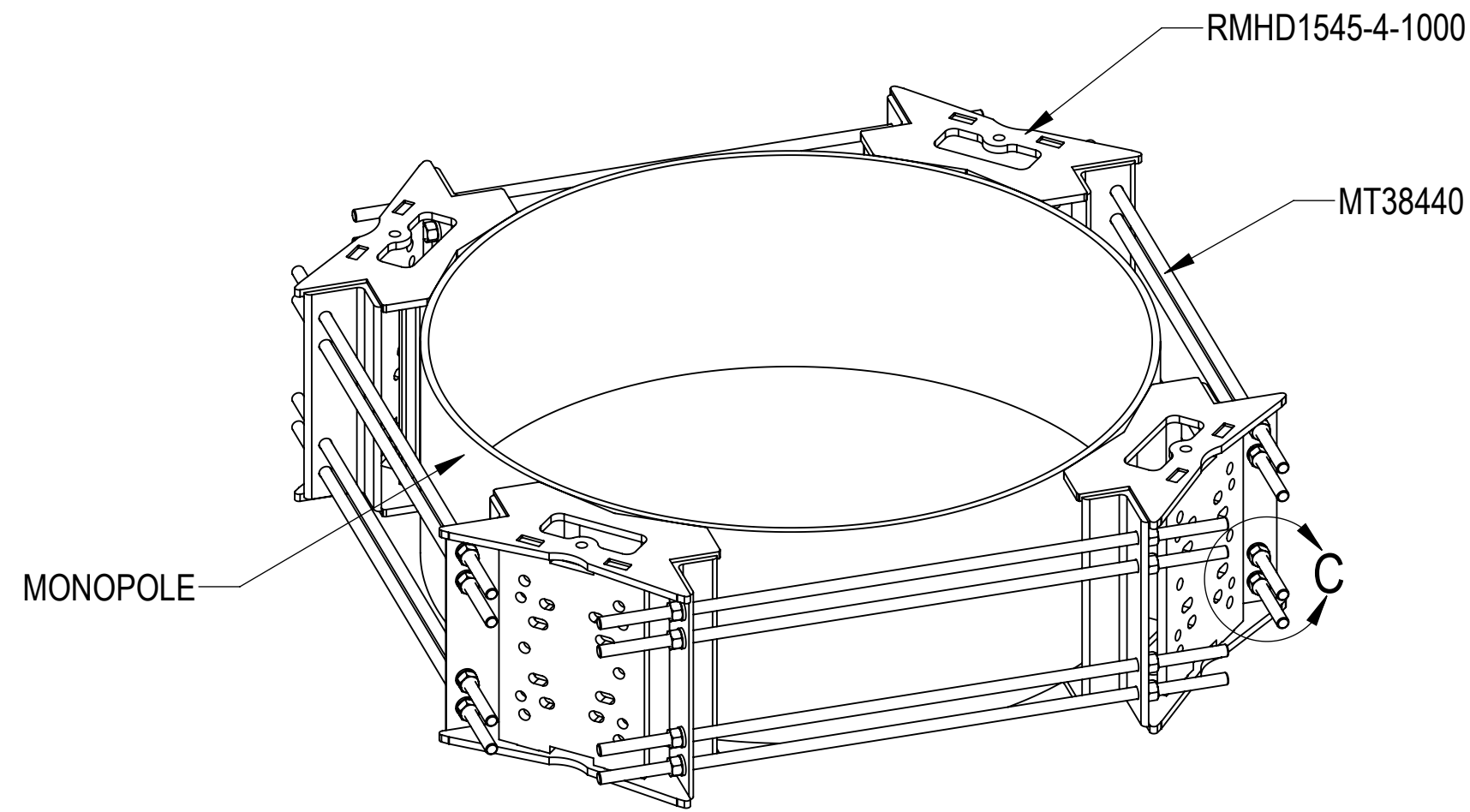


4X

MT-546-126

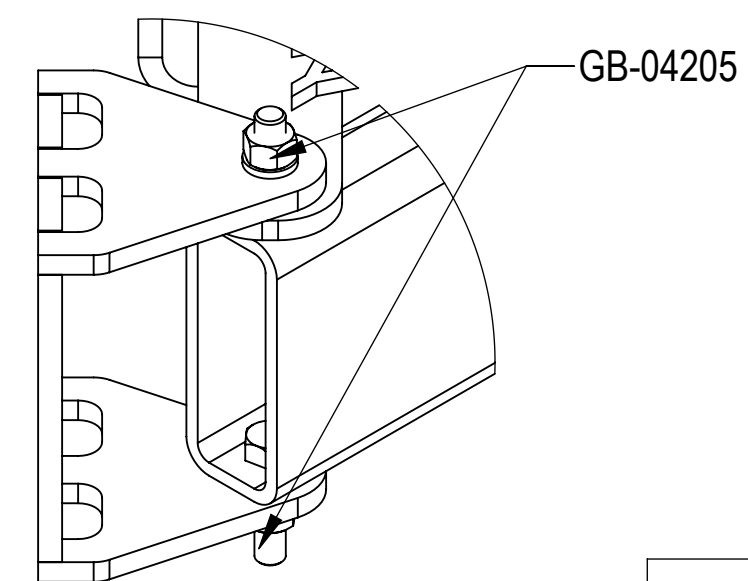
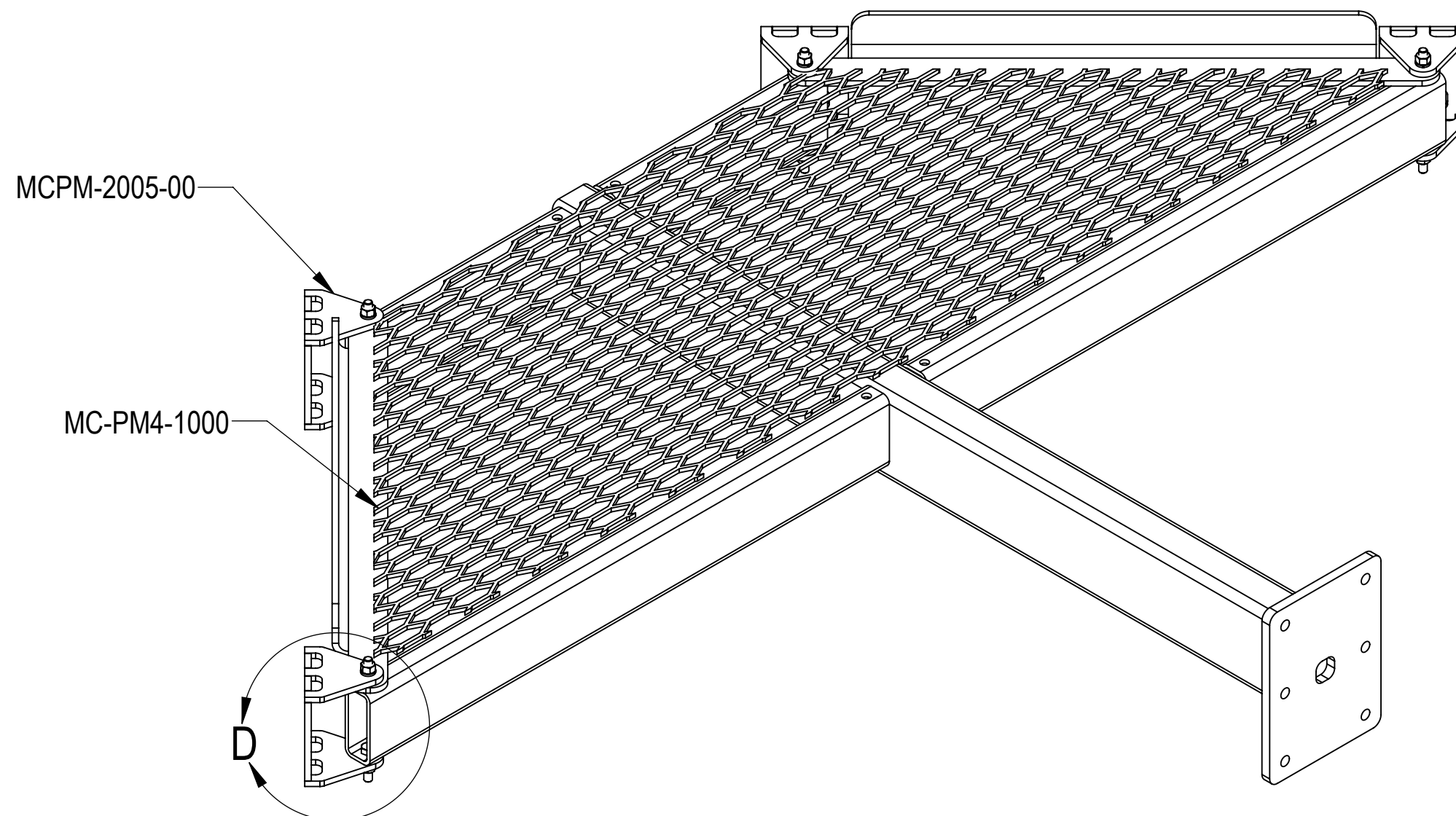
COMMSCOPE, INC. OF NORTH CAROLINA				
TITLE ATLAS4, 10' FP, NO ANT PIPE				
SIZE C	SCALE 1:8	DOCUMENT NO. MC-PM10M4-B		
		DRAWING		SHEET
		VERSION	STATUS	REVISION
		01	RE	B
				3 OF 6

STEP 1: ATTACH RING MOUNT SECTORS(RMHD1545-4-1000) TO MONOPOLE USING THREAD RODS (MT38440) AND NUT KITS (GWL-06 & GN-06)


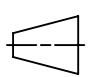


DETAIL C
SCALE 1 : 2

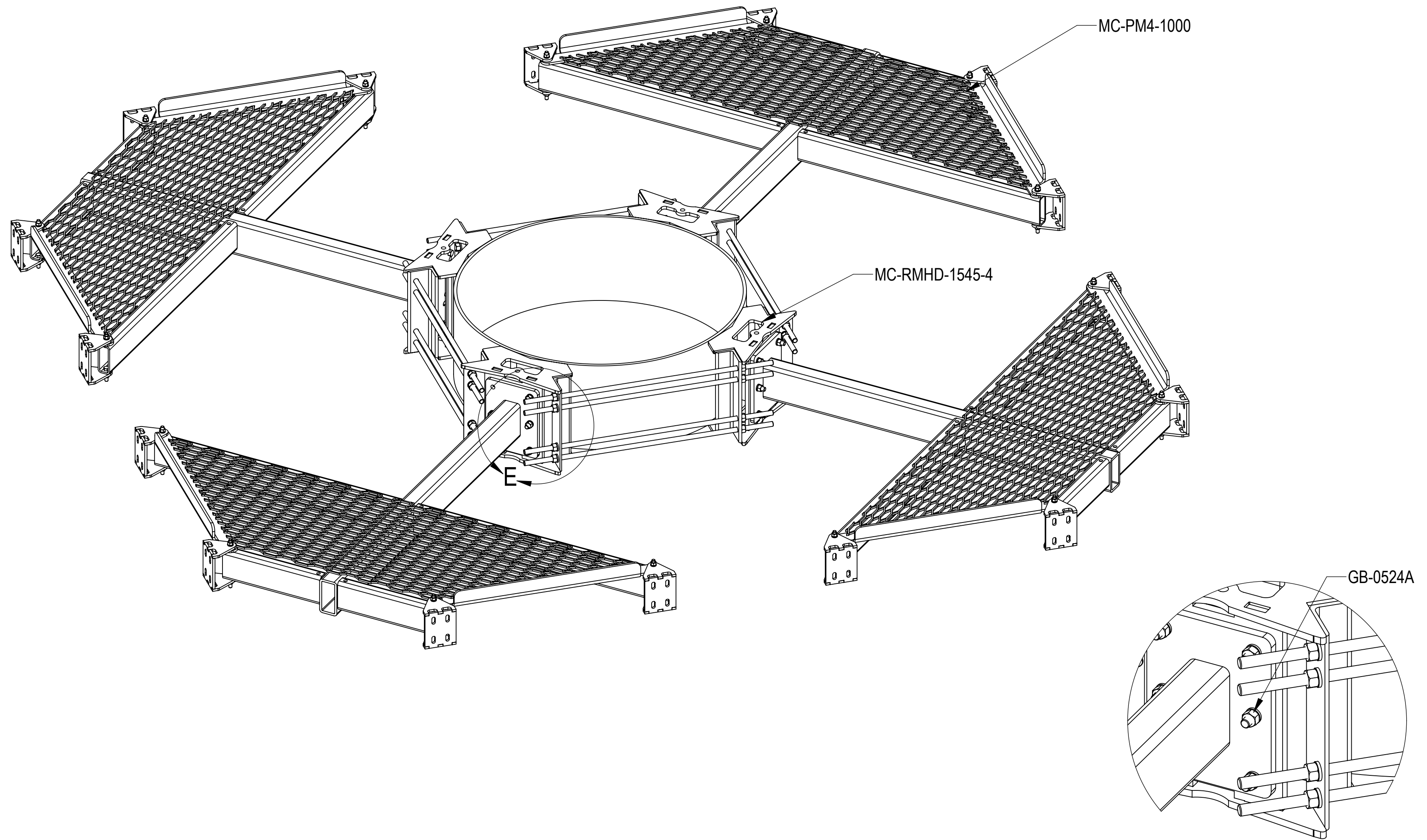
STEP 2: ATTACH PIPE MOUNTING BRACKETS (MCPM-2005-00) TO T-ARMS (MC-PM4-1000) USING BOLT KITS (GB-04205)



DETAIL D
SCALE 1 : 3

COMMSCOPE, INC. OF NORTH CAROLINA				
TITLE ATLAS4, 10' FP, NO ANT PIPE				
SIZE C	SCALE 1:48	DOCUMENT NO. MC-PM10M4-B		
 		DRAWING		SHEET
		VERSION 01	STATUS RE	REVISION B

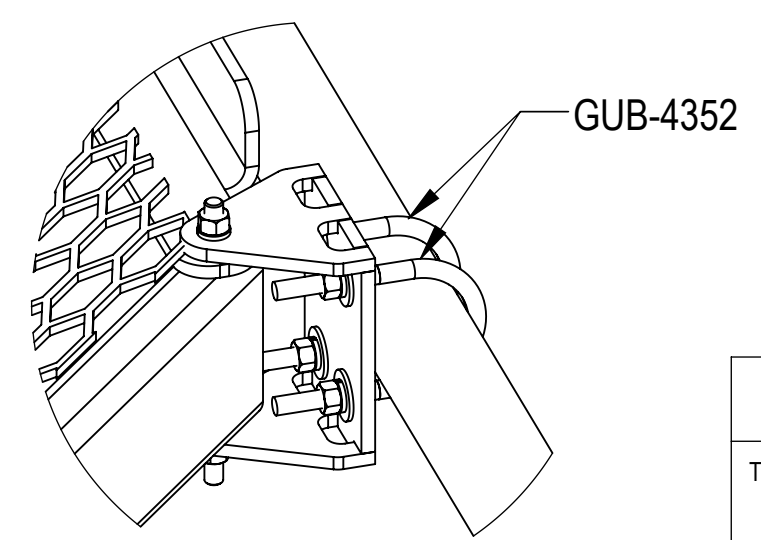
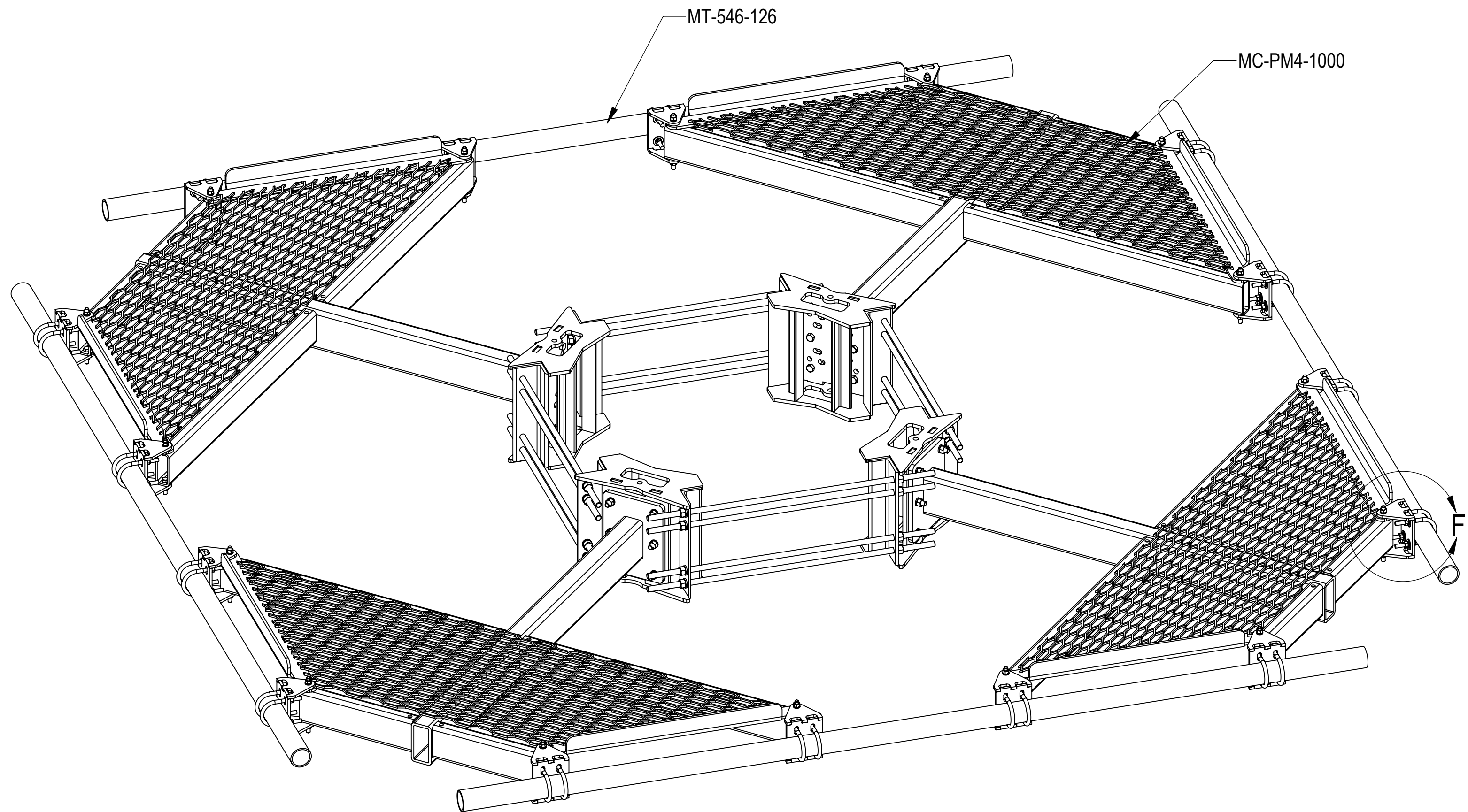
STEP 3: ATTACH T-ARMS (MC-PM4-1000) TO RING MOUNT (MC-RMHD-1545-4) USING BOLT KITS (GB-0524A)



DETAIL E
SCALE 1 : 5

COMMSCOPE, INC. OF NORTH CAROLINA					
TITLE ATLAS4, 10' FP, NO ANT PIPE					
SIZE C	SCALE 1:48	DOCUMENT NO. MC-PM10M4-B			
		DRAWING			SHEET
		VERSION	STATUS	REVISION	5 OF 6
		01	RE	B	

STEP 4: ATTACH FACE PIPES (MT-546-126) TO T-ARMS (MC-PM4-1000) USING U-BOLT KITS (GUB-4352)



DETAIL F
SCALE 1 : 5

COMMSCOPE, INC. OF NORTH CAROLINA				
TITLE ATLAS4, 10' FP, NO ANT PIPE				
SIZE C	SCALE 1:48	DOCUMENT NO. MC-PM10M4-B		
		DRAWING		SHEET
		VERSION 01	STATUS RE	REVISION B
				6 OF 6