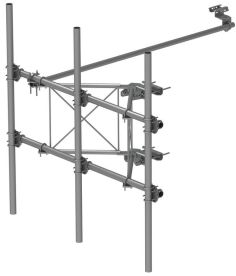


SFG21HD-12-3-126



G21HD High Capacity Sector Frame, 12.5 ft 2.88 in OD face pipes, includes three 126 in 2.375 OD antenna pipes

Product Classification

Product Type High capacity Tower sector frame

General Specifications

Application 4G LTE antenna/radio mount
Mounting Angle 60°, 203.2 mm (8 in) | Straight or tapered legs up to 203.2 mm (8 in) OD
Patent Number Patent pending
Pipe, quantity 3
Tower Taper Non-tapered | Tapered

Dimensions

Height 3,200.4 mm | 126 in
Face Width 3.81 m | 12.5 ft
Width 3,810 mm | 150 in
Pipe Length 3,200.4 mm | 126 in
Face Support Pipe Diameter 73.025 mm | 2.875 in
Mounting Diameter, maximum 218.44 mm | 8.6 in
Mounting Diameter, minimum 38.1 mm | 1.5 in
Pipe Outer Diameter 60.325 mm | 2.375 in
Stand-off Distance 889 mm | 35 in

Material Specifications

Material Type Hot dip galvanized steel

Mechanical Specifications

Wind Rating For Specifications, please contact steelproducts@commscope.com or call 800-255-1479

SFG21HD-12-3-126

Wind Rating Test Method TIA/EIA-222-G

Packaging and Weights

Included Frame | Pipe mounts | Plain end pipes (3) | Stiff arm | Tower attachment

Packaging quantity 1

Weight, net 174.633 kg | 385 lb

Regulatory Compliance/Certifications

Agency

ISO 9001:2015



Classification

Designed, manufactured and/or distributed under this quality management system

* Footnotes

Wind Rating

BWS—Base Wind Speed; FBC—Florida Building Code