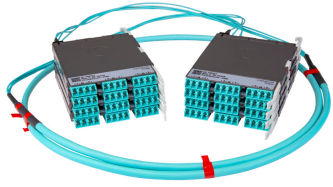


PPLUJX8LCLCR



Propel ULL Multimode OM4 Cabled Module, 2x8 duplex LC Propel module on End A to 2x8 on End B, 16 fiber LSZH Trunk, Method B Enhanced

- This component requires 2 of the 12 lanes on the Propel Panel blade
- Ultra-low loss (ULL) with Method B Enhanced polarity
- End A module can be installed from rear of panel
- Serialized QR code provides easy access to factory optical test results

Product Classification

Regional Availability	Asia Australia/New Zealand EMEA Latin America North America
Portfolio	SYSTIMAX®
Product Type	Fiber cabled module
Product Brand	Propel
Product Series	PPL
Ordering Note	End B module is the same module as End A For lengths greater than 999 ft (304 m), orders must be in meters Maximum length is 400 meters

General Specifications

Configuration Type	PROPEL Module to PROPEL Module
Cable Color	Aqua
Cable Type	Trunk Cable - LSZH
Interface, front	LC/UPC
Interface Feature, front	Duplex Shuttered
Interface Color, front	Aqua
Interface, rear	LC/UPC
Interface Feature, rear	Duplex Shuttered
Interface Color, rear	Aqua
Module Size, end A	8 fiber
Module Size, end B	8 fiber
Module Quantity, end A	2
Module Quantity, end B	2
Polarity	Method B Enhanced (ULL)

PPLUJX8LCLCR

Total Fibers, quantity	16
Total Ports, quantity, front	8
Total Ports, quantity, rear	8

Dimensions

Height	11 mm 0.433 in
Width	65 mm 2.559 in
Depth	170 mm 6.693 in
Breakout Length, end B	23 in
Cable Assembly Length Range (m)	1 – 400
Cable Assembly Length Range (ft)	2 – 999

Ordering Tree



Optical Specifications

Fiber Mode	Multimode
Fiber Type	OM4
Insertion Loss, maximum	0.35 dB

Environmental Specifications

Qualification Standards	IEC 61753-1 TIA-568.3-D
Safety Standard	c-UL-us

Packaging and Weights

Packaging quantity	1
---------------------------	---

Regulatory Compliance/Certifications

PPLUJX8LCLCR

Agency	Classification
CHINA-ROHS	Above maximum concentration value
ROHS	Compliant/Exempted
UK-ROHS	Compliant/Exempted



Included Products

- 760248163 N-016-MP-5K-F08AQ/20T/D – Fiber indoor cable, LazrSPEED® Low Smoke Zero Halogen Riser MPO Trunk, 16 fiber with 8 fiber 2.0mm subunits, Gel-free, Multimode OM4, Feet jacket marking, Aqua jacket color, Dca flame rating