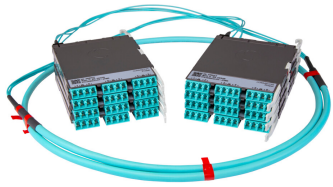


# PPLUGGRLCLCS



Propel ULL Singlemode Cabled Module, 2x16 duplex LC Propel module on End A to 2x16 on End B, 32 fiber Plenum Trunk, Method B Enhanced

- This component requires 4 of the 12 lanes on the Propel Panel blade
- Ultra-low loss (ULL) with Method B Enhanced polarity
- End A module can be installed from rear of panel
- Serialized QR code provides easy access to factory optical test results

## Product Classification

<b>Regional Availability</b>	Asia   Australia/New Zealand   EMEA   Latin America   North America
<b>Portfolio</b>	SYSTIMAX®
<b>Product Type</b>	Fiber cabled module
<b>Product Brand</b>	Propel
<b>Product Series</b>	PPL
<b>Ordering Note</b>	End B module is the same module as End A   For lengths greater than 999 ft (304 m), orders must be in meters   Maximum length is 400 meters

## General Specifications

<b>Configuration Type</b>	PROPEL Module to PROPEL Module
<b>Cable Color</b>	Yellow
<b>Cable Type</b>	Trunk Cable - Plenum
<b>Interface, front</b>	LC/UPC
<b>Interface Feature, front</b>	Duplex   Shuttered
<b>Interface Color, front</b>	Blue
<b>Interface, rear</b>	LC/UPC
<b>Interface Feature, rear</b>	Duplex   Shuttered
<b>Interface Color, rear</b>	Blue
<b>Module Size, end A</b>	16 fiber
<b>Module Size, end B</b>	16 fiber
<b>Module Quantity, end A</b>	2
<b>Module Quantity, end B</b>	2
<b>Polarity</b>	Method B Enhanced (ULL)
<b>Total Fibers, quantity</b>	32

# PPLUGGRLCLCS

**Total Ports, quantity, front** 16

**Total Ports, quantity, rear** 16

## Dimensions

**Height** 11 mm | 0.433 in

**Width** 131 mm | 5.157 in

**Depth** 170 mm | 6.693 in

**Breakout Length, end B** 23 in

**Cable Assembly Length Range (m)** 1 – 400

**Cable Assembly Length Range (ft)** 2 – 999

## Ordering Tree



## Optical Specifications

**Fiber Mode** Singlemode

**Fiber Type** OS2

**Insertion Loss, maximum** 0.6 dB

## Environmental Specifications

**Qualification Standards** IEC 61753-1 | TIA-568.3-D

**Safety Standard** c-UL-us

## Packaging and Weights

**Packaging quantity** 1

## Regulatory Compliance/Certifications

**Agency** **Classification**

# PPLUGGRLCLCS

---

CHINA-ROHS Above maximum concentration value

ROHS Compliant/Exempted

UK-ROHS Compliant/Exempted



## Included Products

760251015  
P-032-MP-8G1-F16YL - Fiber indoor cable, Plenum MPO Trunk, 32 fiber with 16 fiber subunits,, Singlemode G.657.A2 /B2 Feet jacket marking, Yellow jacket color