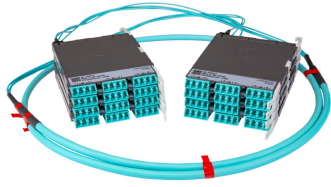


# PPLU3XFLCLCM



Propel ULL Multimode OM4 Cabled Module, 6x2f duplex LC Propel module on End A to 6x24 on End B, 144 fiber B2ca Trunk, Method B Enhanced

- This component requires 6 of the 12 lanes on the Propel Panel blade
- Ultra-low loss (ULL) with Method B Enhanced polarity
- End A module can be installed from rear of panel
- Serialized QR code provides easy access to factory optical test results

## Product Classification

<b>Regional Availability</b>	Asia   Australia/New Zealand   EMEA   Latin America   North America
<b>Portfolio</b>	SYSTIMAX®
<b>Product Type</b>	Fiber cabled module
<b>Product Brand</b>	Propel
<b>Product Series</b>	PPL
<b>Ordering Note</b>	End B module is the same module as End A   For lengths greater than 999 ft (304 m), orders must be in meters   Maximum length is 400 meters

## General Specifications

<b>Configuration Type</b>	PROPEL Module to PROPEL Module
<b>Cable Color</b>	Aqua
<b>Cable Type</b>	Trunk Cable - LSZH Class B2ca
<b>Interface, front</b>	LC/UPC
<b>Interface Feature, front</b>	Duplex   Shuttered
<b>Interface Color, front</b>	Aqua
<b>Interface, rear</b>	LC/UPC
<b>Interface Feature, rear</b>	Duplex   Shuttered
<b>Interface Color, rear</b>	Aqua
<b>Module Size, end A</b>	24 fiber
<b>Module Size, end B</b>	24 fiber
<b>Module Quantity, end A</b>	6
<b>Module Quantity, end B</b>	6
<b>Polarity</b>	Method B Enhanced (ULL)

# PPLU3XFLCLCM

<b>Total Fibers, quantity</b>	144
<b>Total Ports, quantity, front</b>	72
<b>Total Ports, quantity, rear</b>	72

## Dimensions

<b>Height</b>	11 mm   0.433 in
<b>Width</b>	131 mm   5.157 in
<b>Depth</b>	170 mm   6.693 in
<b>Breakout Length, end B</b>	23 in
<b>Cable Assembly Length Range (m)</b>	1 – 400
<b>Cable Assembly Length Range (ft)</b>	2 – 999

## Ordering Tree



## Optical Specifications

<b>Fiber Mode</b>	Multimode
<b>Fiber Type</b>	OM4
<b>Insertion Loss, maximum</b>	0.35 dB

## Environmental Specifications

<b>Qualification Standards</b>	IEC 61753-1   TIA-568.3-D
<b>Safety Standard</b>	c-UL-us

## Packaging and Weights

<b>Packaging quantity</b>	1
---------------------------	---

## Regulatory Compliance/Certifications

# PPLU3XFLCLCM

---

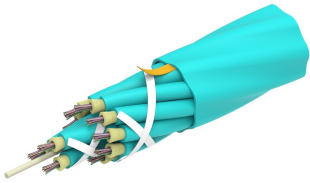
Agency	Classification
CHINA-ROHS	Above maximum concentration value
ROHS	Compliant/Exempted
UK-ROHS	Compliant/Exempted



## Included Products

- 760249078 N-144-MP-5K-F24AQ/30T/B2 – Fiber indoor cable, LazrSPEED® Low Smoke Zero Halogen Riser MPO Trunk Cable, 144 fiber with 24-fiber, 3.0mm subunits, Gel-free, Multimode OM4, Feet jacket marking, Aqua jacket color, B2ca flame rating

# 760249078 | N-144-MP-5K-F24AQ/30T/B2



Fiber indoor cable, LazrSPEED® Low Smoke Zero Halogen Riser MPO Trunk Cable, 144 fiber with 24-fiber, 3.0mm subunits, Gel-free, Multimode OM4, Feet jacket marking, Aqua jacket color, B2ca flame rating

## Product Classification

<b>Regional Availability</b>	Asia   Australia/New Zealand   EMEA   Latin America   North America
<b>Portfolio</b>	CommScope®
<b>Product Type</b>	Fiber indoor cable
<b>Product Series</b>	N-MP

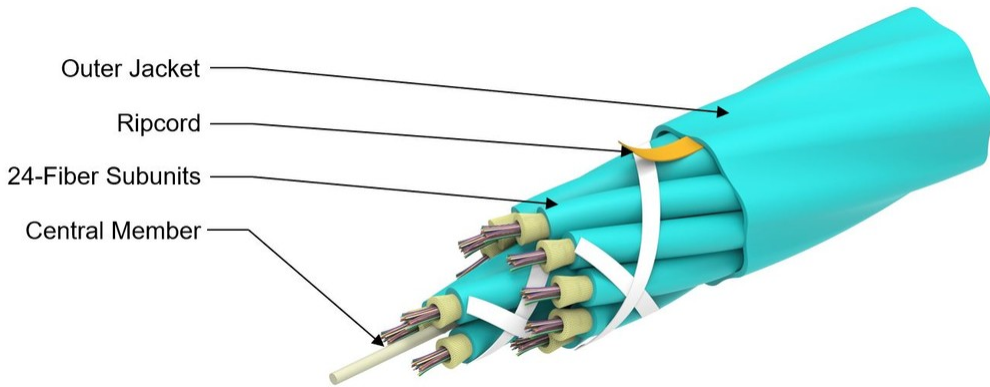
## General Specifications

<b>Cable Type</b>	MPO trunk cable
<b>Construction Type</b>	Non-armored
<b>Subunit Type</b>	Gel-free
<b>Jacket Color</b>	Aqua
<b>Jacket Marking</b>	Feet
<b>Subunit, quantity</b>	6
<b>Fibers per Subunit, quantity</b>	24
<b>Total Fiber Count</b>	144

## Dimensions

<b>Buffer Tube/Subunit Diameter</b>	3 mm   0.118 in
<b>Diameter Over Jacket</b>	12.1 mm   0.476 in

## Representative Image



## Mechanical Specifications

<b>Minimum Bend Radius, loaded</b>	182 mm   7.165 in
<b>Minimum Bend Radius, unloaded</b>	121 mm   4.764 in
<b>Tensile Load, long term, maximum</b>	400 N   89.924 lbf
<b>Tensile Load, short term, maximum</b>	1335 N   300.12 lbf
<b>Compression</b>	10 N/mm   57.101 lb/in
<b>Compression Test Method</b>	FOTP-41   IEC 60794-1 E3
<b>Flex</b>	25 cycles
<b>Flex Test Method</b>	FOTP-104   IEC 60794-1 E6
<b>Impact</b>	2.94 N-m   26.021 in lb
<b>Impact Test Method</b>	FOTP-25   IEC 60794-1 E4
<b>Strain</b>	See long and short term tensile loads
<b>Strain Test Method</b>	FOTP-33   IEC 60794-1 E1
<b>Twist</b>	10 cycles
<b>Twist Test Method</b>	FOTP-85   IEC 60794-1 E7
<b>Vertical Rise, maximum</b>	288 m   944.882 ft

## Optical Specifications

<b>Fiber Type</b>	OM4, LazrSPEED® 550
-------------------	---------------------

## Environmental Specifications

<b>Installation temperature</b>	0 °C to +50 °C (+32 °F to +122 °F)
<b>Operating Temperature</b>	0 °C to +60 °C (+32 °F to +140 °F)

# 760249078 | N-144-MP-5K-F24AQ/30T/B2

---

<b>Storage Temperature</b>	-40 °C to +60 °C (-40 °F to +140 °F)
<b>Cable Qualification Standards</b>	ANSI/ICEA S-83-596   Telcordia GR-409
<b>EN50575 CPR Cable EuroClass Fire Performance</b>	B2ca
<b>EN50575 CPR Cable EuroClass Smoke Rating</b>	s1a
<b>EN50575 CPR Cable EuroClass Droplets Rating</b>	d2
<b>EN50575 CPR Cable EuroClass Acidity Rating</b>	a1
<b>Environmental Space</b>	Low Smoke Zero Halogen (LSZH)
<b>Flame Test Method</b>	IEC 60754-2   IEC 61034-2

## Environmental Test Specifications

<b>Heat Age</b>	0 °C to +85 °C (+32 °F to +185 °F)
<b>Heat Age Test Method</b>	IEC 60794-1 F9
<b>Low High Bend</b>	0 °C to +70 °C (+32 °F to +158 °F)
<b>Low High Bend Test Method</b>	FOTP-37   IEC 60794-1 E11
<b>Temperature Cycle</b>	0 °C to +70 °C (+32 °F to +158 °F)
<b>Temperature Cycle Test Method</b>	FOTP-3   IEC 60794-1 F1

## Packaging and Weights

<b>Cable weight</b>	142 kg/km   95.42 lb/kft
---------------------	--------------------------

## \* Footnotes

**Operating Temperature** Specification applicable to non-terminated bulk fiber cable