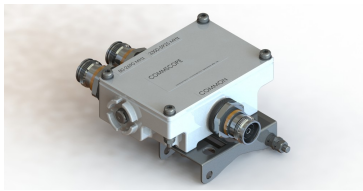


SDX159-DL-43 | E14F06P06



Ultra Compact Single Diplexer 80-2690/3300-5925, DC Low, 4.3-10 connectors

- Ideal for small cell applications
- Compact form factor with reduced size and weight
- Suitable for space limited applications like Metro Cell, Lamp Pole, Concealment Solution and Macro Site
- New 4.3-10 connectors for improved PIM performance and size reduction
- Single configuration
- dc/AISG pass-through on low frequency ports

Product Classification

Product Type Diplexer

General Specifications

Color Gray

Modularity 1-Single

Mounting Pole | Wall

Mounting Pipe Hardware Band clamps (2)

RF Connector Interface 4.3-10 Female

Dimensions

Height 71 mm | 2.795 in

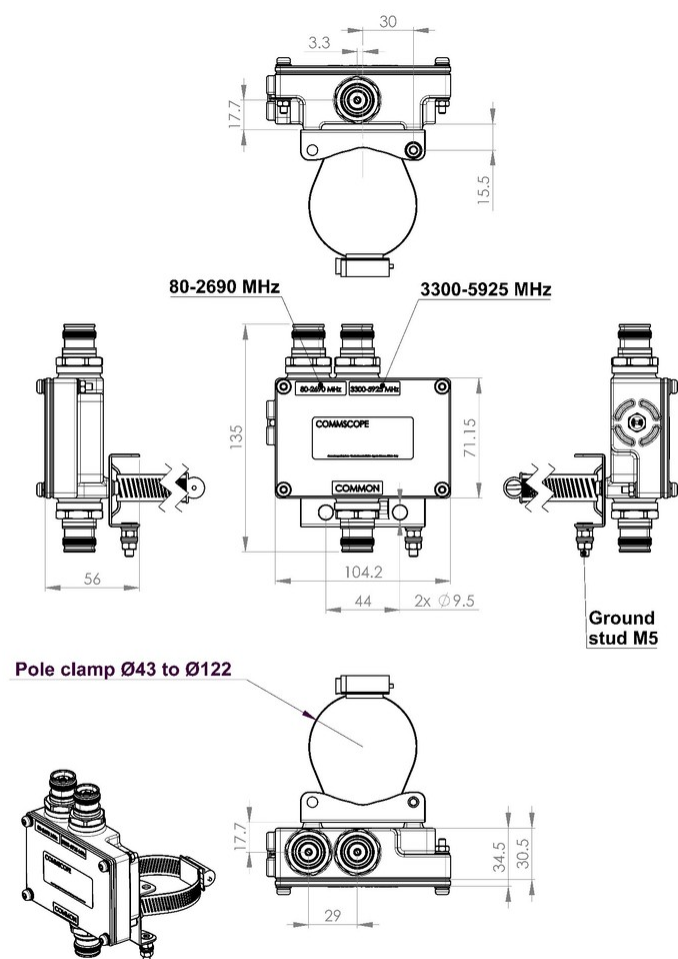
Width 104 mm | 4.094 in

Depth 34.5 mm | 1.358 in

Mounting Pipe Diameter Range 42.6–122 mm

Outline Drawing

SDX159-DL-43 | E14F06P06



Electrical Specifications

| | |
|---|---------------|
| Impedance | 50 ohm |
| Electrical Specifications, dc Power/Alarm | |
| dc/AISG Pass-through, combiner | Branch 1 |
| dc/AISG Pass-through, demultiplexer | Branch 1 |
| Lightning Surge Current | 5 kA |
| Lightning Surge Current Waveform | 8/20 waveform |

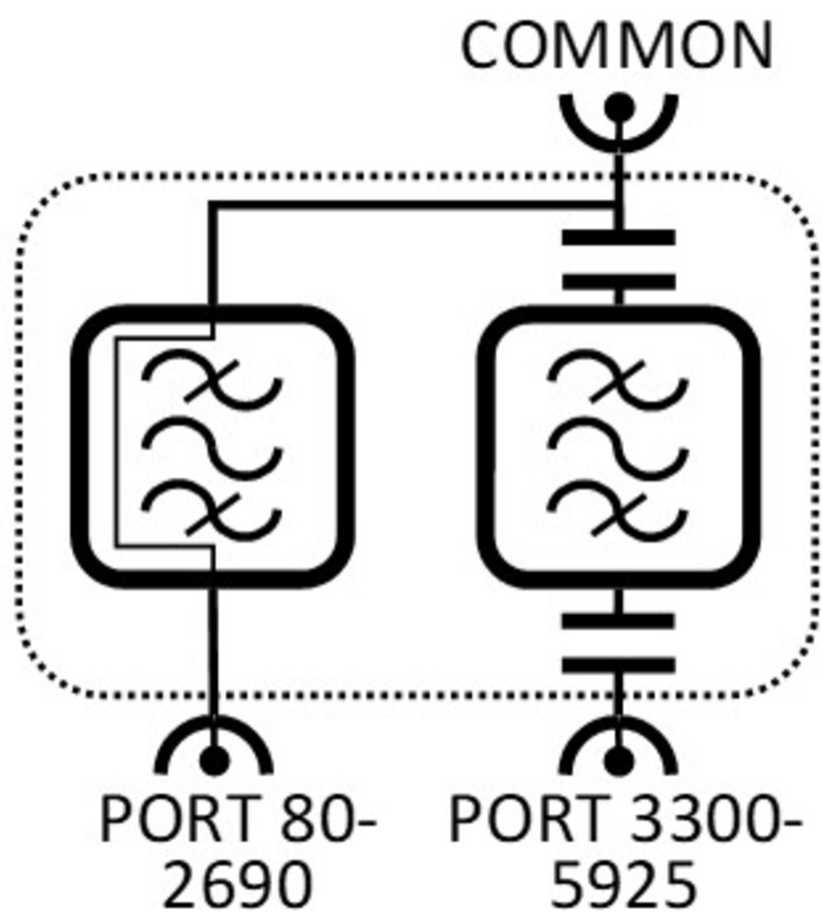
Electrical Specifications

| | | |
|------------|-------|-------|
| Sub-module | 1 2 | 1 2 |
| Branch | 1 | 2 |

SDX159-DL-43 | E14F06P06

| Port Designation | PORT 1 80-2690 | PORT 2 3300-5925 |
|--------------------------------------|----------------------|----------------------|
| Electrical Specifications, Band Pass | | |
| Frequency Range, MHz | 80-2690 | 3300-5925 |
| Insertion Loss, typical, dB | 0.2 | 0.2 |
| Return Loss, typical, dB | 20 | 20 |
| Isolation, typical, dB | 52 | 52 |
| Input Power, RMS, maximum, W | 100 | 100 |
| Input Power, PEP, maximum, W | 1000 | 1000 |
| 3rd Order PIM, typical, dBc | -161 | -161 |
| 3rd Order PIM Test Method | Two +43 dBm carriers | Two +43 dBm carriers |

Block Diagram



Environmental Specifications

SDX159-DL-43 | E14F06P06

| | |
|---------------------------------------|--------------------------------------|
| Operating Temperature | -40 °C to +65 °C (-40 °F to +149 °F) |
| Corrosion Test Method | IEC 60068-2-11, 30 days |
| Environmental Test Method | ETSI EN 300 019-1-4 |
| Ingress Protection Test Method | IEC 60529:2001, IP67 |

Packaging and Weights

| | |
|--|--------------------|
| Included | Mounting hardware |
| Volume | 0.26 L |
| Weight, with mounting hardware | 0.85 kg 1.874 lb |
| Weight, without mounting hardware | 0.75 kg 1.653 lb |