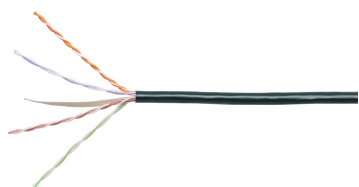


# 1-2171015-6 | TE610R-WT06: CMR UTP 4/23 C6 3K



ETL Verified Category 6 U/UTP Cable, non-plenum, white jacket, 4 pair count, 3000 ft (914 m) length, reel

## OBSOLETE

### Replaced By:

UN884024484/30

CS34R WHT C6 4/23 U/UTP RL 3KFT

CS34R ETL Verified Category 6 U/UTP Cable, non-plenum, white jacket, 4 pair count, 3000 ft (914 m) length, reel

## Product Classification

### Regional Availability

Asia | Australia/New Zealand | Latin America | North America

### Portfolio

NETCONNECT®

### Product Type

Twisted pair cable

## General Specifications

### Product Number

610R

### ANSI/TIA Category

6

### Cable Component Type

Horizontal

### Cable Type

U/UTP (unshielded)

### Conductor Type, singles

Solid

### Conductors, quantity

8

### Jacket Color

White

### Note

All electrical transmission tests include swept frequency measurements

### Pairs, quantity

4

### Separator Type

Tape separator

### Transmission Standards

ANSI/TIA-568.2-D | CENELEC EN 50288-6-1 | ISO/IEC 11801 Class E

## Dimensions

### Cable Length

914.4 m | 3000 ft

### Cable Length Tolerance

±5%

### Diameter Over Jacket, nominal

5.537 mm | 0.218 in

### Jacket Thickness

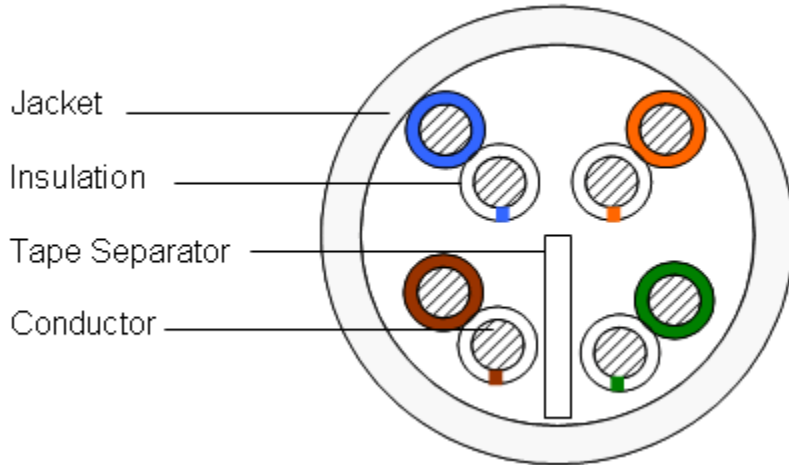
0.508 mm | 0.02 in

# 1-2171015-6 | TE610R-WT06: CMR UTP 4/23 C6 3K

Conductor Gauge, singles

23 AWG

## Cross Section Drawing



## Electrical Specifications

<b>Characteristic Impedance</b>	100 ohm
<b>dc Resistance Unbalance, maximum</b>	5 %
<b>dc Resistance, maximum</b>	6.66 ohms/100 m   2.03 ohms/100 ft
<b>Delay Skew, maximum</b>	30 ns
<b>Dielectric Strength, minimum</b>	1500 Vac   2500 Vdc
<b>Mutual Capacitance at Frequency</b>	5.6 nF/100 m @ 1 kHz
<b>Nominal Velocity of Propagation (NVP)</b>	69 %
<b>Operating Frequency, maximum</b>	250 MHz
<b>Operating Voltage, maximum</b>	80 V
<b>Remote Powering</b>	Fully complies with the recommendations set forth by IEEE 802.3bt (Type 4) for the safe delivery of power over LAN cable when installed according to ISO/IEC 14763-2, CENELEC EN 50174-1, CENELEC EN 50174-2 or TIA TSB-184-A
<b>Safety Voltage Rating</b>	300 V

## Electrical Cable Performance

<b>CS</b>	CommScope	<b>NEXT</b>	Near End Crosstalk (dB/100m)
<b>STD</b>	Refers to the standard value listed under Transmission Standards in the Electrical Specifications above	<b>PSNEXT</b>	Power Sum Near End Crosstalk (db/100m)
<b>TYP</b>	Typical Electrical Performance	<b>ACRF</b>	Attenuation to Crosstalk Ratio - Far End (dB/100m)
<b>IL</b>	Insertion Loss (dB/100m)	<b>RL</b>	Return Loss (dB)
<b>ACR</b>	Attenuation to Crosstalk Ratio (dB/100m)	<b>ELTCTL</b>	Equal Level Transverse Conversion Transfer Loss (dB/100m)
<b>PSACR</b>	Power Sum Attenuation to Crosstalk Ratio (dB/100m)		
<b>PSACRF</b>	Power Sum Attenuation to Crosstalk Ratio - Far End (dB/100m)		
<b>TCL</b>	Transverse Conversion Loss (dB/100m)		

Freq. MHz	IL			NEXT			ACR			PSNEXT			PSACR			ACRF			PSACRF			RL			TCL		ELTCTL	
	CS	STD	TYP	CS	STD	TYP	CS	STD	TYP	CS	STD	TYP	CS	STD	TYP	CS	STD	TYP	CS	STD	TYP	CS	STD	TYP	CS	STD	CS	STD
1	2	2	1.8	74.3	74.3	89.3	72.3	72.3	87.6	72.3	72.3	87	70.3	70.3	85.3	67.8	67.8	84.3	64.8	64.8	82.4	20	20	34	40	40	35	35
4	3.8	3.8	3.5	65.3	65.3	80	61.5	61.5	76.5	63.3	63.3	77.7	59.5	59.5	74.1	55.8	55.8	72.6	52.8	52.8	70.8	23	23	33.9	40	40	23	23
8	5.3	5.3	5	60.8	60.8	75.5	55.4	55.4	70.5	58.8	58.8	73.2	53.4	53.4	68.2	49.7	49.7	66.8	46.7	46.7	64.9	24.5	24.5	35.5	40	40	16.9	16.9
10	6	6	5.6	59.3	59.3	73.9	53.3	53.3	68.3	57.3	57.3	71.5	51.3	51.3	65.9	47.8	47.8	64.9	44.8	44.8	63	25	25	36.5	40	40	15	15
16	7.6	7.6	7.2	56.2	56.2	70.6	48.7	48.7	63.4	54.2	54.2	68.3	46.7	46.7	61.1	43.7	43.7	60.8	40.7	40.7	58.9	25	25	37.6	38	38	10.9	10.9
20	8.5	8.5	8.1	54.8	54.8	69.2	46.3	46.3	61.2	52.8	52.8	66.9	44.3	44.3	58.8	41.8	41.8	58.9	38.8	38.8	56.9	25	25	38.2	37	37	9	9
25	9.5	9.5	9	53.3	53.3	67.6	43.8	43.8	58.6	51.3	51.3	65.3	41.8	41.8	56.2	39.8	39.8	57	36.8	36.8	55	24.3	24.3	38.2	36	36	7	7
31.25	10.7	10.7	10.1	51.9	51.9	66.3	41.2	41.2	56.1	49.9	49.9	63.9	39.2	39.2	53.8	37.9	37.9	55	34.9	34.9	53	23.6	23.6	38.3	35.1	35.1		
62.5	15.4	15.4	14.5	47.4	47.4	61.4	32	32	46.9	45.4	45.4	59	30	30	44.5	31.9	31.9	48.9	28.9	28.9	46.9	21.5	21.5	34.7	32	32		
100	19.8	19.8	18.6	44.3	44.3	58.1	24.5	24.5	39.5	42.3	42.3	55.7	22.5	22.5	37.1	27.8	27.8	44.7	24.8	24.8	42.8	20.1	20.1	31.6	30	30		
155	25.2	25.2	23.5	41.4	41.4	55.7	16.3	16.3	32.2	39.4	39.4	53	14.3	14.3	29.5	24	24	41	21	21	39	18.8	18.8	29.6	28.1	28.1		
200	29	29	26.9	39.8	39.8	52.6	10.8	10.8	25.7	37.8	37.8	50.4	8.8	8.8	23.4	21.8	21.8	38.6	18.8	18.8	36.7	18	18	29.3	27	27		
250	32.8	32.8	30.3	38.3	38.3	50.8	5.5	5.5	20.5	36.3	36.3	48.6	3.5	3.5	18.3	19.8	19.8	36.5	16.8	16.8	34.7	17.3	17.3	28.8	26	26		
300			33.5			49			15.6			46.8			13.4			34.5			32.6			28.9				
350			36.4			47.6			11.2			45.4			9			33			31			29				
400			39			46.3			7.3			44.1			5.1			31.3			29.3			30.3				
500			44.3			43.2			-1.1			41.2			-3.1			27.3			25.5			31				
550			44.6			43.1			-0.5			41.2			-2.5			27.4			25.5			31				
650			51.3			40.2			-11.1			38.4			-12.9			22.3			20.4			25				

## Material Specifications

<b>Conductor Material</b>	Bare copper
<b>Insulation Material</b>	Polyolefin
<b>Jacket Material</b>	PVC
<b>Separator Material</b>	Polyolefin

## Mechanical Specifications

**Pulling Tension, maximum** 11.34 kg | 25 lb

## Environmental Specifications

# 1-2171015-6 | TE610R-WT06: CMR UTP 4/23 C6 3K

<b>Installation temperature</b>	0 °C to +60 °C (+32 °F to +140 °F)
<b>Operating Temperature</b>	-20 °C to +60 °C (-4 °F to +140 °F)
<b>Environmental Space</b>	Non-plenum
<b>Flame Test Method</b>	CMR   UL 1666

## Packaging and Weights

<b>Cable weight</b>	35.136 kg/km   23.61 lb/kft
<b>Packaging Type</b>	Reel

## Regulatory Compliance/Certifications

<b>Agency</b>	<b>Classification</b>
CHINA-ROHS	Below maximum concentration value
ISO 9001:2015	Designed, manufactured and/or distributed under this quality management system
REACH-SVHC	Compliant as per SVHC revision on <a href="http://www.commscope.com/ProductCompliance">www.commscope.com/ProductCompliance</a>
ROHS	Compliant
UK-ROHS	Compliant

