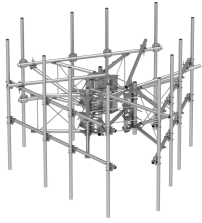


MCG23HDX-12M-9-126



G23HDX High Capacity 3-Sector Monopole Frame, 12.5 ft 2.88 in OD face pipes, includes nine 2.88 OD 126 in pipes; For patents, see www.cs-pat.com.

OBSOLETE

This product was discontinued on: July 29, 2022

Replaced By:

MCG23HDX-12M9120 G23HDX High Capacity 3-Sector Monopole Sector Frame, 12.5 ft x 2.88 in OD face pipes, includes nine 2.88 OD x 120 in pipes

Product Classification

Product Type High capacity monopole sector frame

General Specifications

Mounting Monopole, 381–1270 mm (15–50 in) OD

Pipe, quantity 9

Sectors, quantity 3

Dimensions

Height 126 in | 3,200.4 mm

Face Width 12.5 ft | 3.81 m

Width 150 in | 3,810 mm

Pipe Length 126 in | 3,200.4 mm

Face Support Pipe Diameter 2.875 in | 73.025 mm

Mounting Diameter, maximum 50 in | 1270 mm

Mounting Diameter, minimum 15 in | 381 mm

Pipe Outer Diameter 2.875 in | 73.025 mm

Stand-off Distance 45.9 in | 1,165.86 mm

Material Specifications

Material Type Hot dip galvanized steel

MCG23HDX-12M-9-126

Mechanical Specifications

Wind Rating	For Specifications, please contact steelproducts@commscope.com or call 800-255-1479
Wind Rating Test Method	TIA/EIA-222

Packaging and Weights

Included	Pipe mounts Plain end pipes (9) Ring mounts (2) Sector frames (3) Stiff arm
Packaging quantity	1
Weight, net	2708 lb 1,228.328 kg

Regulatory Compliance/Certifications

Agency	Classification
ISO 9001:2015	Designed, manufactured and/or distributed under this quality management system



* Footnotes

Wind Rating	BWS—Base Wind Speed; FBC—Florida Building Code
--------------------	--