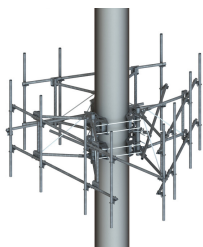


MCG22-10M-12-96



G22 High Capacity 3-Sector Monopole Frame, 10 ft 6 in face, includes twelve 96 in pipes; For patents, see [www.cs-pat.com](http://www.cs-pat.com).

**OBSOLETE**

This product was discontinued on: July 29, 2022

Replaced By:

MCG22HD-10M-9-96	G22HD High Capacity 3-Sector Monopole Frame with 2 7/8in OD x 10.5ft face. Includes nine 2 3/8in OD x 96in antenna pipes
------------------	--

## Product Classification

<b>Product Type</b>	High capacity monopole sector frame
---------------------	-------------------------------------

## General Specifications

**Mounting** Monopole, 381–1270 mm (15–50 in) OD

<b>Pipe, quantity</b>	12
-----------------------	----

**Sectors, quantity** 3

## Dimensions

**Height** 2,438.4 mm | 96 in

**Face Width** 3.2 m | 10.5 ft

**Width** 3,200.4 mm | 126 in

**Pipe Length** 2,438.4 mm | 96 in

**Face Support Pipe Diameter** 60.325 mm | 2.375 in

<b>Mounting Diameter, maximum</b>	1270 mm   50 in.
-----------------------------------	------------------

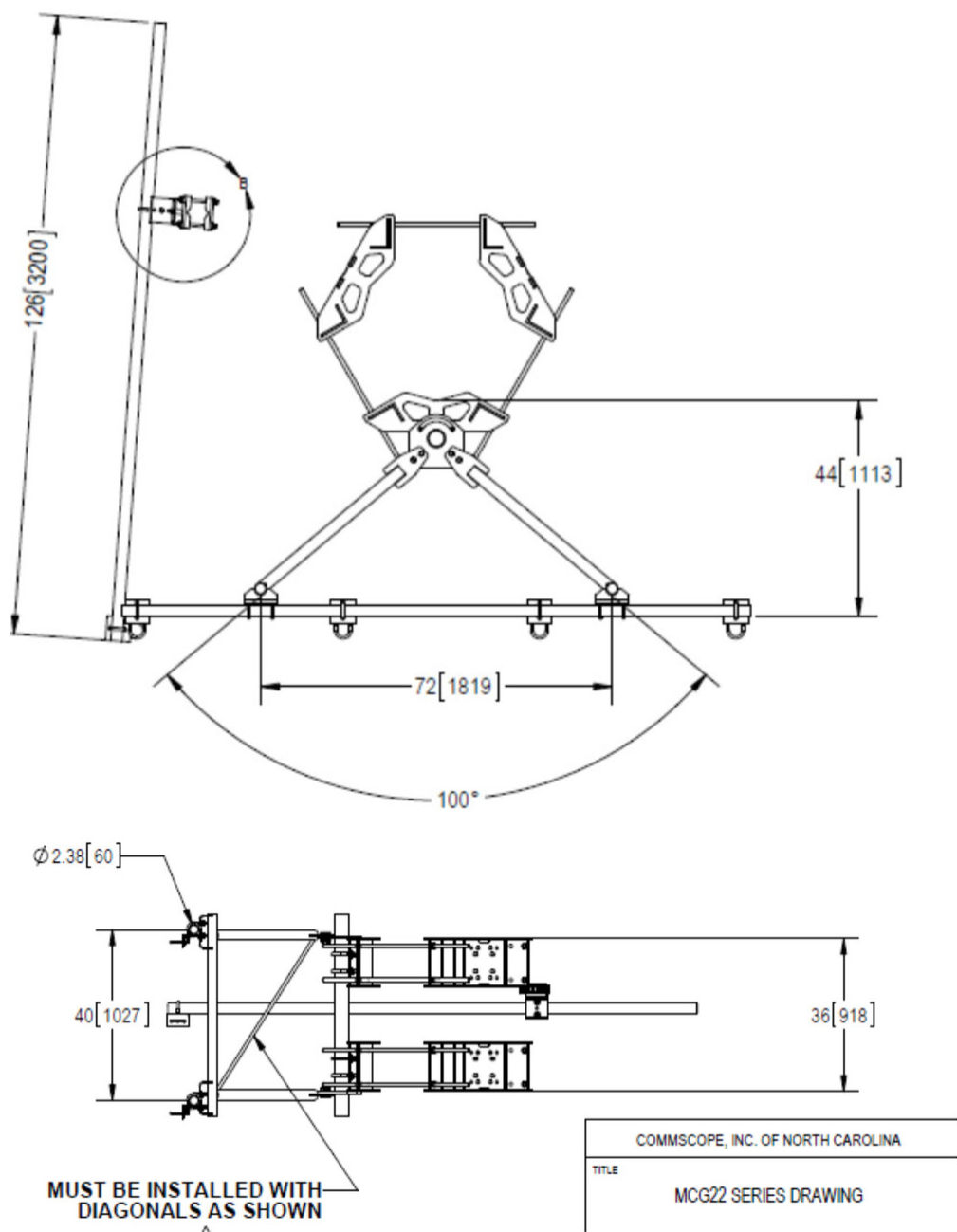
**Mounting Diameter, minimum** 381 mm | 15 in

<b>Pipe Outer Diameter</b>	60.325 mm		2.375 in
----------------------------	-----------	--	----------

**Stand-off Distance** 1,117.6 mm | 44 in

## Outline Drawing

# MCG22-10M-12-96



## Material Specifications

**Material Type** Hot dip galvanized steel

## Mechanical Specifications

**Load Capacity** With additional stiff arm at 300 ft AGL: 600 lb per pipe w/out ice / 2000 lb per pipe including ice

# MCG22-10M-12-96

Wind Rating	For Specifications, please contact your local ANDREW representative
Wind Rating Test Method	TIA/EIA-222
Wind Rating with Additional Stiff Arm	300 ft AGL: 120 mph (BWS) without ice /60 mph with ice

## Packaging and Weights

Included	Pipe mounts   Plain end pipes (12)   Ring mounts (2)   Sector frames (3)   Stiff arm
Packaging quantity	1
Weight, net	879.062 kg   1938 lb

## Regulatory Compliance/Certifications

Agency	Classification
CHINA-ROHS	Above maximum concentration value
ISO 9001:2015	Designed, manufactured and/or distributed under this quality management system
ROHS	Compliant/Exempted
UK-ROHS	Compliant/Exempted



## \* Footnotes

Wind Rating	BWS—Base Wind Speed; FBC—Florida Building Code
Wind Rating with Additional Stiff Arm	BWS—Base Wind Speed; FBC—Florida Building Code