

1. GENERAL NOTES
 1.1 ALL METRIC DIMENSIONS ARE IN BRACKETS [X.X]
 1.2 MATCH DRILL PLATE WITH .12 DRILL X.X

2. DESIGN NOTES

3. MANUFACTURING/SPECIAL REQUIREMENTS

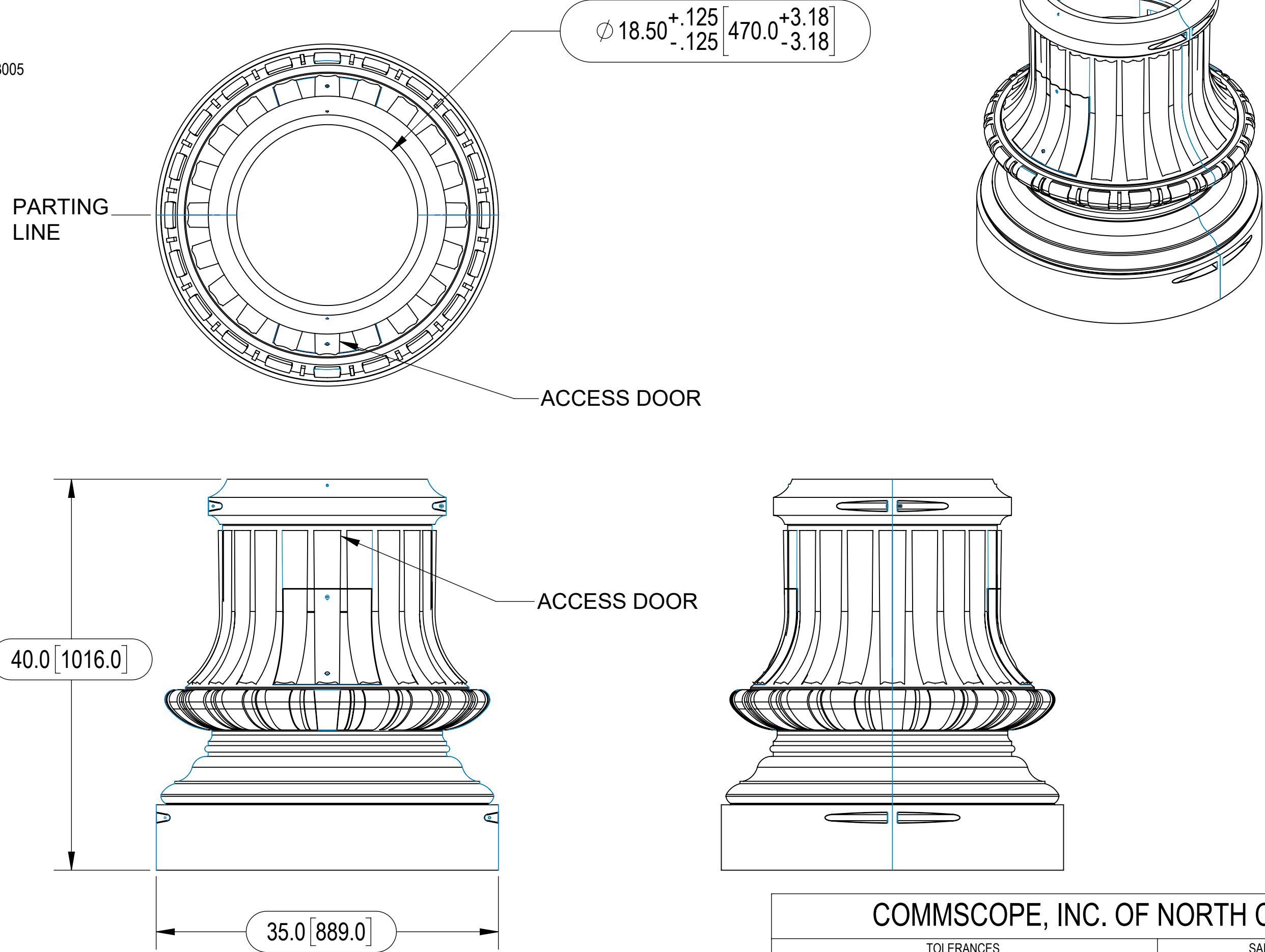
- 3.1 NO VENDOR LOGOS OR MARKINGS SHOULD BE VISIBLE WHEN INSTALLED
 3.2 BREAK ALL SHARP EDGES AND DEBURR PART FOR SAFE HANDLING
 3.3 POWDER COAT EXTERIOR SURFACE PER COMMSCOPE'S PRODUCT COLOR/FINISH SPECIFICATION MTM1004 PER SUFFIX -XX. DO NOT POWDER COAT INTERIOR OF ASSEMBLY, OVERSPRAY IS PERMISSIBLE. INSPECT FINISH OF ASSEMBLY. TO COMMSCOPE'S MTM1004-0001, POWDER COATING INSPECTION ACCEPTANCE/REJECTION AS SURFACE CLASS A.

4. TESTING

5. PACKAGING

- 5.1 TO BE RECEIVED ASSEMBLED WITH ALL HARDWARE INSTALLED
 5.2 PACKAGING SHALL MEET COMMSCOPE REQUIREMENTS PER DOCUMENT IS-PL-3005

REVISIONS				
REV.	ECN	DESCRIPTION	BY	DATE
A	10691	INITIAL RELEASE	HW1041	5/12/2021
B	40142870CMO	REPLACE NOTES AND DRAWING, CHANGE TOLERANCES	LL1090	2/18/2022



COMMSCOPE, INC. OF NORTH CAROLINA															
TOLERANCES					SAP MATERIAL MASTER										
0 PLACE X ± 0.2		2 PLACE .XX ± 0.063			MTM1139-0020-XX										
1 PLACE .X ± 0.12		ANGLES ± 0.5°													
FINISH SEE NOTE					MATERIAL CAST ALUMINUM										
UNLESS OTHERWISE SPECIFIED DIMENSIONS ARE IN MILLIMETERS INTERPRET PER ISO STANDARDS HANDBOOK TECHNICAL DRAWINGS VOLUMES 1 & 2, THIRD EDITION (2002)			NAME		DATE		WASHINGTON BASE 18" SHAFT SERIES								
			CE DM1121		17/JUN/2020										
			RW LMCDOWEL		02/21/2022										
			RV												
AD RW1043		02/21/2022		SCALE		DOCUMENT NO. MTM1139-0020-XX									
RE LMCDOWEL		10/11/17		1:12											
ECN 40142870CMO			WORK AREA		INSL		MODEL								
DENSITY		0.1		lbs/in ³		VERSION		STATUS		REVISION		DRAWING		SHEET	
MASS		224		lbs		00		RE		A		01		RE	
VOLUME		2212.24		in ³								RE		B	
SURFACE AREA		11461.863		in ²								RE		B	
HEIGHT		40		in										1 OF 1	
LENGTH		35		in											
WIDTH		35		in											