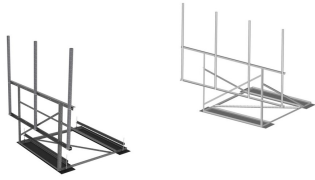


RF-SERIES-BALLAST-FRAMES



RF Series Light & Medium Capacity Ballast Frames

The RF Series Ballasted Roof Top Frames feature angle frame designs offered in multiple face widths from 7' to 14' with or without antenna pipes. The RF Roof Top Mount Family includes:

- RF-N Series Light Duty Ballasted Frames with 3" X 3" Face Angles
- RF-NL Series Medium Duty Ballasted Frames with 3.5" X 3.5" Face Angles

Product Classification

Product Type Non-penetrating roof frame

Material Specifications

Material Type Hot dip galvanized steel