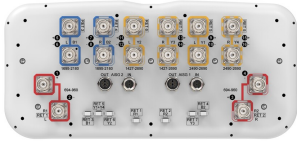


# RRZZHHTT-65AR7N43F



16-port sector antenna, 4x 694–960, 4x 1427–2690, 4x 1695–2180 and 4x 2490–2690 MHz, 65° HPBW, 7x RET

- All Internal RET actuators are connected in "Cascaded SRET" configuration
- Supports re-configurable antenna sharing capability enabling control of the internal RET system using up to two separate RET compatible OEM radios
- Array configuration provides capability for 4T4R (4x MIMO) on Low band and High band
- Retractable tilt indicator rods
- Antenna shape optimized for wind load reduction

## General Specifications

<b>Antenna Type</b>	Sector
<b>Band</b>	Multiband
<b>Color</b>	Light Grey (RAL 7035)
<b>Grounding Type</b>	RF connector inner conductor and body grounded to reflector and mounting bracket
<b>Performance Note</b>	Outdoor usage
<b>Radome Material</b>	Fiberglass, UV resistant
<b>Reflector Material</b>	Aluminum
<b>RF Connector Interface</b>	4.3-10 Female
<b>RF Connector Location</b>	Bottom
<b>RF Connector Quantity, mid band</b>	12
<b>RF Connector Quantity, low band</b>	4
<b>RF Connector Quantity, total</b>	16

## Remote Electrical Tilt (RET) Information

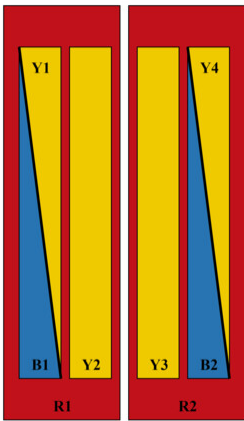
<b>RET Hardware</b>	CommRET v2
<b>RET Interface</b>	8-pin DIN Female   8-pin DIN Male
<b>RET Interface, quantity</b>	2 female   2 male
<b>Input Voltage</b>	10–30 Vdc
<b>Internal RET</b>	Low band (2)   Mid band (5)
<b>Power Consumption, active state, maximum</b>	8 W
<b>Power Consumption, idle state, maximum</b>	1 W
<b>Protocol</b>	3GPP/AISG 2.0 (Single RET)

# RRZZHHTT-65AR7N43F

## Dimensions

<b>Width</b>	430 mm   16.929 in
<b>Depth</b>	197 mm   7.756 in
<b>Length</b>	1599 mm   62.953 in
<b>Net Weight, antenna only</b>	33.2 kg   73.193 lb

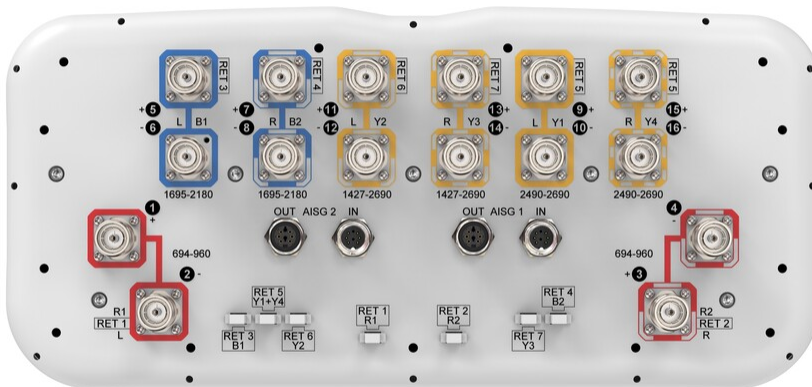
## Array Layout



Array ID	Frequency (MHz)	RF Connector	RET (SRET)	AISG No.	AISG RET UID
R1	694-960	1 - 2	1	AISG1	CPxxxxxxxxxxxxxxxxR1
R2	694-960	3 - 4	2	AISG1	CPxxxxxxxxxxxxxxxxR2
B1	1695-2180	5 - 6	3	AISG1	CPxxxxxxxxxxxxxxxxB1
B2	1695-2180	7 - 8	4	AISG1	CPxxxxxxxxxxxxxxxxB2
Y1	2490-2690	9 - 10	5	AISG1	CPxxxxxxxxxxxxxxxxY1
Y4	2490-2690	15 - 16			
Y2	1427-2690	11 - 12	6	AISG1	CPxxxxxxxxxxxxxxxxY2
Y3	1427-2690	13 - 14	7	AISG1	CPxxxxxxxxxxxxxxxxY3

(Sizes of colored boxes are not true depictions of array sizes)

## Port Configuration



# RRZZHHTT-65AR7N43F

## Electrical Specifications

<b>Impedance</b>	50 ohm
<b>Operating Frequency Band</b>	1427 – 2690 MHz   1695 – 2180 MHz   2490 – 2690 MHz   694 – 960 MHz
<b>Polarization</b>	±45°
<b>Total Input Power, maximum</b>	900 W @ 50 °C

## Electrical Specifications

Frequency Band, MHz	698–806	790–896	890–960	1427–1518	1695–1990	1920–2300	2300–2500	2490–2690
<b>Beamwidth, Horizontal, degrees</b>	59	56	58	71	68	63	59	56
<b>Beamwidth, Vertical, degrees</b>	13.4	12	11.2	7.8	6.2	5.6	5	4.7
<b>Beam Tilt, degrees</b>	2–16	2–16	2–16	2–12	2–12	2–12	2–12	2–12
<b>USLS (First Lobe), dB</b>	14	15	14	12	13	14	16	16
<b>Front-to-Back Ratio at 180°, dB</b>	25	24	25	31	33	33	32	32
<b>Front-to-Back Total Power at 180° ± 30°, dB</b>	18	19	21	23	26	26	27	27
<b>CPR at Boresight, dB</b>	21	19	22	17	19	18	20	18
<b>CPR at Sector, dB</b>	5	7	7	9	5	5	8	3
<b>Isolation, Cross Polarization, dB</b>	26	26	26	26	26	26	26	26
<b>Isolation, Inter-band, dB</b>	26	26	26	26	26	26	26	26
<b>VSWR   Return loss, dB</b>	1.5 14.0	1.5 14.0	1.5 14.0	1.5 14.0	1.5 14.0	1.5 14.0	1.5 14.0	1.5 14.0
<b>PIM, 3rd Order, 2 x 20 W, dBc</b>	-153	-153	-153	-153	-153	-153	-153	-153
<b>Input Power per Port at 50°C, maximum, watts</b>	300	300	300	250	250	250	200	200

## Electrical Specifications, BASTA

Frequency Band, MHz	698–806	790–896	890–960	1427–1518	1695–1990	1920–2300	2300–2500	2490–2690
<b>Gain by all Beam Tilts, average, dBi</b>	13.3	13.5	13.8	14.6	16	17	17.9	17.8
<b>Gain by all Beam Tilts Tolerance, dB</b>	±0.6	±0.6	±0.8	±0.5	±0.8	±0.9	±0.6	±0.9
<b>Beamwidth, Horizontal Tolerance, degrees</b>	±8.3	±7.9	±8.2	±9.2	±5.9	±4.9	±4.3	±5
<b>Beamwidth, Vertical Tolerance, degrees</b>	±1.2	±1	±0.7	±0.4	±0.5	±0.5	±0.3	±0.2

# RRZZHHTT-65AR7N43F

USLS, beampeak to 20° above beampeak, dB	14	15	14	12	13	14	16	15
--	----	----	----	----	----	----	----	----

## Electrical Specifications

Frequency Band, MHz	1695–1990	1920–2180	2490–2690
Beamwidth, Horizontal, degrees	71	65	61
Beamwidth, Vertical, degrees	6.1	5.6	4.7
Beam Tilt, degrees	2–12	2–12	2–12
USLS (First Lobe), dB	17	16	21
Front-to-Back Ratio at 180°, dB	31	31	29
Front-to-Back Total Power at 180° ± 30°, dB	24	24	22
CPR at Boresight, dB	18	17	17
CPR at Sector, dB	8	9	7
Isolation, Cross Polarization, dB	27	27	27
Isolation, Inter-band, dB	26	26	27
VSWR   Return loss, dB	1.5 14.0	1.5 14.0	1.5 14.0
PIM, 3rd Order, 2 x 20 W, dBc	-153	-153	-153
Input Power per Port at 50°C, maximum, watts	250	250	150

## Electrical Specifications, BASTA

Frequency Band, MHz	1695–1990	1920–2180	2490–2690
Gain by all Beam Tilts, average, dBi	15.8	16.5	16.8
Gain by all Beam Tilts Tolerance, dB	±0.6	±0.7	±0.4
Beamwidth, Horizontal Tolerance, degrees	±4.3	±8.2	±4.8
Beamwidth, Vertical Tolerance, degrees	±0.5	±0.3	±0.2
USLS, beampeak to 20° above beampeak, dB	13	14	14

## Mechanical Specifications

Wind Loading @ Velocity, frontal	376.0 N @ 150 km/h (84.5 lbf @ 150 km/h)
Wind Loading @ Velocity, lateral	203.0 N @ 150 km/h (45.6 lbf @ 150 km/h)

# RRZZHHTT-65AR7N43F

---

<b>Wind Loading @ Velocity, maximum</b>	594.0 N @ 150 km/h (133.5 lbf @ 150 km/h)
<b>Wind Loading @ Velocity, rear</b>	243.0 N @ 150 km/h (54.6 lbf @ 150 km/h)
<b>Wind Speed, maximum</b>	241 km/h   149.75 mph

## Packaging and Weights

<b>Width, packed</b>	530 mm   20.866 in
<b>Depth, packed</b>	349 mm   13.74 in
<b>Length, packed</b>	1771 mm   69.724 in
<b>Weight, gross</b>	43 kg   94.799 lb

## Regulatory Compliance/Certifications

<b>Agency</b>	<b>Classification</b>
CHINA-ROHS	Above maximum concentration value
ISO 9001:2015	Designed, manufactured and/or distributed under this quality management system
ROHS	Compliant/Exempted
UK-ROHS	Compliant/Exempted



## Included Products

BSAMNT-3	–	Wide Profile Antenna Downtilt Mounting Kit for 2.4 - 4.5 in (60 - 115 mm) OD round members. Kit contains one scissor top bracket set and one bottom bracket set.
----------	---	--

## \* Footnotes

<b>Performance Note</b>	Severe environmental conditions may degrade optimum performance
-------------------------	---

# BSAMNT-3



Wide Profile Antenna Downtilt Mounting Kit for 2.4 - 4.5 in (60 - 115 mm) OD round members. Kit contains one scissor top bracket set and one bottom bracket set.

## Product Classification

**Product Type** Downtilt mounting kit

## General Specifications

**Application** Outdoor

**Color** Silver

## Dimensions

**Compatible Diameter, maximum** 115 mm | 4.528 in

**Compatible Diameter, minimum** 60 mm | 2.362 in

**Weight, net** 6.2 kg | 13.669 lb

## Material Specifications

**Material Type** Galvanized steel

## Packaging and Weights

**Included** Brackets | Hardware

**Packaging quantity** 1

**Weight, gross** 6.4 kg | 14.11 lb

## Regulatory Compliance/Certifications

Agency	Classification
CE	Compliant with the relevant CE product directives
CHINA-ROHS	Below maximum concentration value
ISO 9001:2015	Designed, manufactured and/or distributed under this quality management system
REACH-SVHC	Compliant as per SVHC revision on <a href="http://www.commscope.com/ProductCompliance">www.commscope.com/ProductCompliance</a>
ROHS	Compliant
UK-ROHS	Compliant

# BSAMNT-3

---

