



COMMSCOPE®

VZW Smart Program
Product Selection Guide

April 2024

CONTACT YOUR COMMSCOPE SUPPORT TEAM

Engineering and A&E Support

Brian Cross

Principal Engineer, Structures

Email: Brian.Cross@commscope.com

Phone: +1 817 864 4191

Edgar Beshay

Mechanical Engineer, Structures

Email: Edgar.Beshay@commscope.com

Phone: +1 214 583 6725

Sales Support

Serge Honeysett

Sales Support - Eastern US

Email: Serge.Honeysett2@commscope.com

Phone: +1 315 641 3792

Jim Noel

Sales Support - Western US

Email: Jim.Noel@commscope.com

Phone: +1 469 286 8977

Product Line Management Support

Sal Anguiano

Product Line Manager, Structures

Email: Salvador.Anguiano@commscope.com

Phone: +1 817 304 7492

For product support questions, email us directly at: Steelproducts@commscope.com

CommScope Technical Support can be reached by phone at (800) 255-1479 or you can create a Tech Support ticket online at: www.commscope.com/wisupport

QUICK REFERENCE

MONOPOLE APPLICATION		
VZWSMART-PLK1	SUPPORT RAIL KIT	Top Rail kit, 2-7/8" x 150", adjustable corner brace, Hardware for 2-7/8" Antenna Pipes
VZWSMART-PLK1Q	4-SIDED SUPPORT RAIL KIT	4-sector Support Rail Kit with 2-7/8" x 150" Rail, Adjustable Corner Reinforcement, & Crossover Kits for 2-3/8" or 2-7/8" Pipes
VZWSMART-PLK2	PLATFORM SUPPORT RAIL KIT	Top Rail corner bracing kit, 2-7/8" Pipe connections, No Antenna Pipe Hardware
VZWSMART-PLK3	SUPPORT RAIL CORNER BRACKET	Top Rail Corner bracing Kit Supports, One Corner, U-bolts for 2-7/8" Pipe, No Angle Braces Included
VZWSMART-PLK4	4-SIDED SUPPORT RAIL CORNER BRACKET	4-Sector Support Rail Corner Bracing Brackets for monopole platforms. One Corner with 2-7/8" Pipe connections. No Angle Braces Included.
VZWSMART-PLK5	KICKER KIT	Kicker Support Arm, 3" x 3" x 96" Angle with Connecting Brackets and Hardware for up 3" to 6" square or 3-1/2" to 4-1/2" OD Stand-offs, 3 sectors, Collar Mount not included
VZWSMART-PLK5Q	4-SIDED KICKER KIT	4-sector Kicker Support Arms, 3" x 3" x 96" Angle with Connecting Brackets and Hardware for 3" to 6" square or 3-1/2" to 4-1/2" OD Stand-offs, 4 sectors. Attaches to VZWSMART-PLK7Q collar - not included.
VZWSMART-PLK6	DUAL KICKER KIT	Dual Pivoting Kicker Support Arms, 2-1/2" x 2-1/2" x 60" Angle with Connecting Brackets and Hardware, Collar Mount/pipe not included
VZWSMART-PLK7	MONOPOLE COLLAR MOUNT ASSEMBLY	Ring Mount, 12" to 45" Monopole Diameter with 6" x 6" x 5/8" bolt pattern
VZWSMART-PLK7Q	4-SIDED COLLAR MOUNT ASSEMBLY	4-sector Collar / Ring Mount for 14" to 60" monopoles with 6" x 6" x 5/8" bolt pattern
VZWSMART-PLK7S	SMALL POLE ADAPTER	Small Pole Adapter for Collar/Ring Mount (single sector); 3-sector down to 6" Pole OD; 4-Sector down to 8.5" Pole OD
VZWSMART-PLK8	SUPPORT RAIL BRACING KIT	Top Rail Reinforcement Kit, Vertical, One Sector Only, attaches up to 3-1/2" OD horizontal & up to 6" square standoff
VZWSMART-PLK9	COLLAR MOUNT STANDOFF ADAPTER	Collar/Ring Mount Standoff Adapter; Attaches to VZWSMART-PLK7 or VZWSMART-PLK7Q collar- not included
VZWSMART-PLK10	SUPPORT RAIL BRACING KIT - PIPE	Monopole Platform Vertical Top Rail Reinforcement Kit (Pipe), One Sector Only. Attaches up to 4-1/2" OD horizontal & up to 6" square standoff
VZWSMART-SFK4	SUPPORT RAIL BRACING KIT, T-ARM KIT	Reinforcement Arm, 3" x 3" x 72" Square Tube, Collar mount not included
TOWER APPLICATION		
VZWSMART-SFK1	STIFF ARM KIT	Stiff Arm, 2-3/8" x 12 ft Pipe, Attachment Hardware, for 1-1/2" to 8" OD or 60 degree angle tower leg
VZWSMART-SFK3	V-BRACING FOR SECTOR MOUNT	V-Stabilizer for Tower, saddle clamps for 1" - 8", Dual Pivoting Angle Arms, 96" long, attaches up to 4-1/2" OD horizontals
VZWSMART-SFK3-SL	V-BRACING FOR SMALL TOWER LEG	V-Stabilizer for Small Tower Leg, Clamps for up to 3-1/2" round legs, Dual Pivoting Angle Arms, 96" long, attaches up to 4-1/2" OD horizontals

HARDWARE KITS

VZWSMART-AL333	CLIP ANGLE	Set of 2 Clip Angles with 5/8" x 2" Hardware
VZWSMART-MSK1	SMALL CROSSOVER PLATE, 2-3/8" OR 2-7/8" PIPES	Cross Over Plate, 2-3/8" or 2-7/8" Pipes
VZWSMART-MSK2	MEDIUM CROSSOVER PLATE, FOR 2-3/8"- 2-7/8" TO 3-1/2" - 4" PIPES	Crossover plate, connects 2-3/8" to 2-7/8" pipes to 3-1/2" to 4" pipes
VZWSMART-MSK3	PIPE TO PIPE CLAMP, 1-1/2" to 4-1/2"	Pipe to Pipe, Clamps for 1-1/2" to 4-1/2" Pipes
VZWSMART-MSK3D	CLAMP, PIPE TO PIPE, 1-1/2" TO 3-1/2", HD	Pipe to Pipe, Clamps, Wide, HD, for 1-1/2" to 3-1/2" Pipes, with double threaded Rod
VZWSMART-MSK4	PIPE LEVELING KIT	Pipe Mount, Tapered, No U-Bolts, attaches up to 8" OD or 60 degree angle Tower Legs, For Pipes 2-3/8" to 4-1/2" OD, U-Bolts sold separately
VZWSMART-MSK5	LARGE CROSSOVER PLATE, FOR 2-3/8" - 2-7/8" TO 4" - 4-1/2" PIPES	Crossover plate, connects 2-3/8" to 2-7/8" pipes to 4" to 4-1/2" pipes
VZWSMART-MSK6	DUAL CROSSOVER PLATE	Dual Cross Over Plate, Mounts (2) 3-1/2" to 4-1/2" Pipes to 4" or 6" Square Tube
VZWSMART-MSK7	CROSSOVER PLATE, PIPE TO ANGLE	Cross Over Plate, Mounts up to 4-1/2" Pipe, Pipe to Angle, Pipe/Angle not included
VZWSMART-MSK8	CORNER SUPPORT BRACKET KIT	Corner Support Bracket Kit, Mounts to Pipe up to 4-1/2", Pipe/Corner Angle brace not included
VZWSMART-MSK9	LEG CLAMP, 1/2" TO 3-1/2"	Leg Clamp, 1/2" to 3-1/2" Round & Up to 3" Angle
VZWSMART-MSK10	WIRE ROPE ROUTING BRACKET	Wire Rope Routing Bracket Accessory for Ring Mounts, Ring Mount not included
VZWSMART-MSK12	UNIVERSAL CROSSOVER PLATE	Universal Crossover Plate, connects up to 4-1/2" OD x 4-1/2" OD Pipe
VZWSMART-MSK13	UNIVERSAL CHANNEL CROSSOVER	Universal Channel Crossover Plate, connects up to 4-1/2" OD x 3-1/2" OD Pipe
VZWSMART-MSK14	UNIVERSAL ADJUSTABLE CROSSOVER	Universal Adjustable Crossover Plate, connects up to 2-3/8" OD x 3-1/2" OD Pipe

MONOPOLE APPLICATION



VZWSMART-PLK1

SUPPORT RAIL KIT

Top Rail kit, 2-7/8" x 150", adjustable corner brace, Hardware for 2-7/8" Antenna Pipes

VZWSMART-PLK2

PLATFORM SUPPORT RAIL KIT

Top Rail corner bracing kit, 2-7/8" Pipe connections, No Antenna Pipe Hardware



VZWSMART-PLK1Q

4-SIDED SUPPORT RAIL KIT

4-sector Support Rail Kit with 2-7/8" x 150" Rail, Adjustable Corner Reinforcement, & Crossover Kits for 2-3/8" or 2-7/8" Pipes

VZWSMART-PLK3

SUPPORT RAIL CORNER BRACKET

Top Rail Corner bracing Kit Supports, One Corner, U-bolts for 2-7/8" Pipe, No Angle Braces Included



VZWSMART-PLK4

4-SIDED SUPPORT RAIL CORNER BRACKET

4-Sector Support Rail Corner Bracing Brackets for monopole platforms. One Corner with 2-7/8" Pipe connections. No Angle Braces Included.



VZWSMART-PLK5Q

4-SIDED KICKER KIT

4-sector Kicker Support Arms, 3" x 3" x 96" Angle with Connecting Brackets and Hardware for 3" to 6" square or 3-1/2" to 4-1/2" OD Stand-offs, 4 sectors. Attaches to VZWSMART-PLK7Q collar - not included.



VZWSMART-PLK5

KICKER KIT

Kicker Support Arm, 3" x 3" x 96" Angle with Connecting Brackets and Hardware for up 3" to 6" square or 3-1/2" to 4-1/2" OD Stand-offs, 3 sectors, Collar Mount not included



VZWSMART-PLK6

DUAL KICKER KIT

Dual Pivoting Kicker Support Arms, 2-1/2" x 2-1/2" x 60" Angle with Connecting Brackets and Hardware, Collar Mount/pipe not included



MONOPOLE APPLICATION



VZWSMART-PLK7

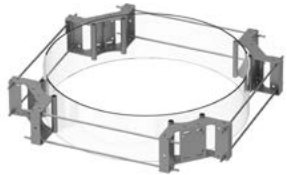
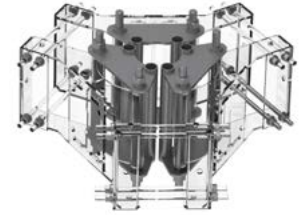
MONOPOLE COLLAR MOUNT ASSEMBLY

Ring Mount, 12" to 45" Monopole Diameter with 6" x 6" x 5/8" bolt pattern

VZWSMART-PLK7S

SMALL POLE ADAPTER

Small Pole Adapter for Collar/Ring Mount (single sector); 3-sector down to 6" Pole OD; 4-Sector down to 8.5" Pole OD



VZWSMART-PLK7Q

4-SIDED COLLAR MOUNT ASSEMBLY

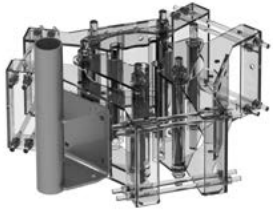
4-sector Collar / Ring Mount for 14" to 60" monopoles with 6" x 6" x 5/8" bolt pattern

VZWSMART-PLK8

SUPPORT RAIL BRACING KIT

Top Rail Reinforcement Kit, Vertical, One Sector Only, attaches up to 3-1/2" OD horizontal & up to 6" square standoff





VZWSMART-PLK9

COLLAR MOUNT STANDOFF ADAPTER

Collar/Ring Mount Standoff Adapter;
Attaches to VZWSMART-PLK7 or
VZWSMART-PLK7Q collar- not included

VZWSMART-SFK4

SUPPORT RAIL BRACING KIT, T-ARM KIT

Reinforcement Arm, 3" x 3" x 72"
Square Tube, Collar mount not
included



VZWSMART-PLK10

SUPPORT RAIL BRACING KIT - PIPE

Monopole Platform Vertical Top Rail
Reinforcement Kit (Pipe), One Sector Only.
Attaches up to 4-1/2" OD horizontal & up to
6" square standoff



TOWER APPLICATION



VZWSMART-SFK1

STIFF ARM KIT

Stiff Arm, 2-3/8" x 12 ft Pipe,
Attachment Hardware, for 1-1/2" to
8" OD or 60 degree angle tower leg

VZWSMART-SFK3-SL

V-BRACING FOR SMALL TOWER LEG

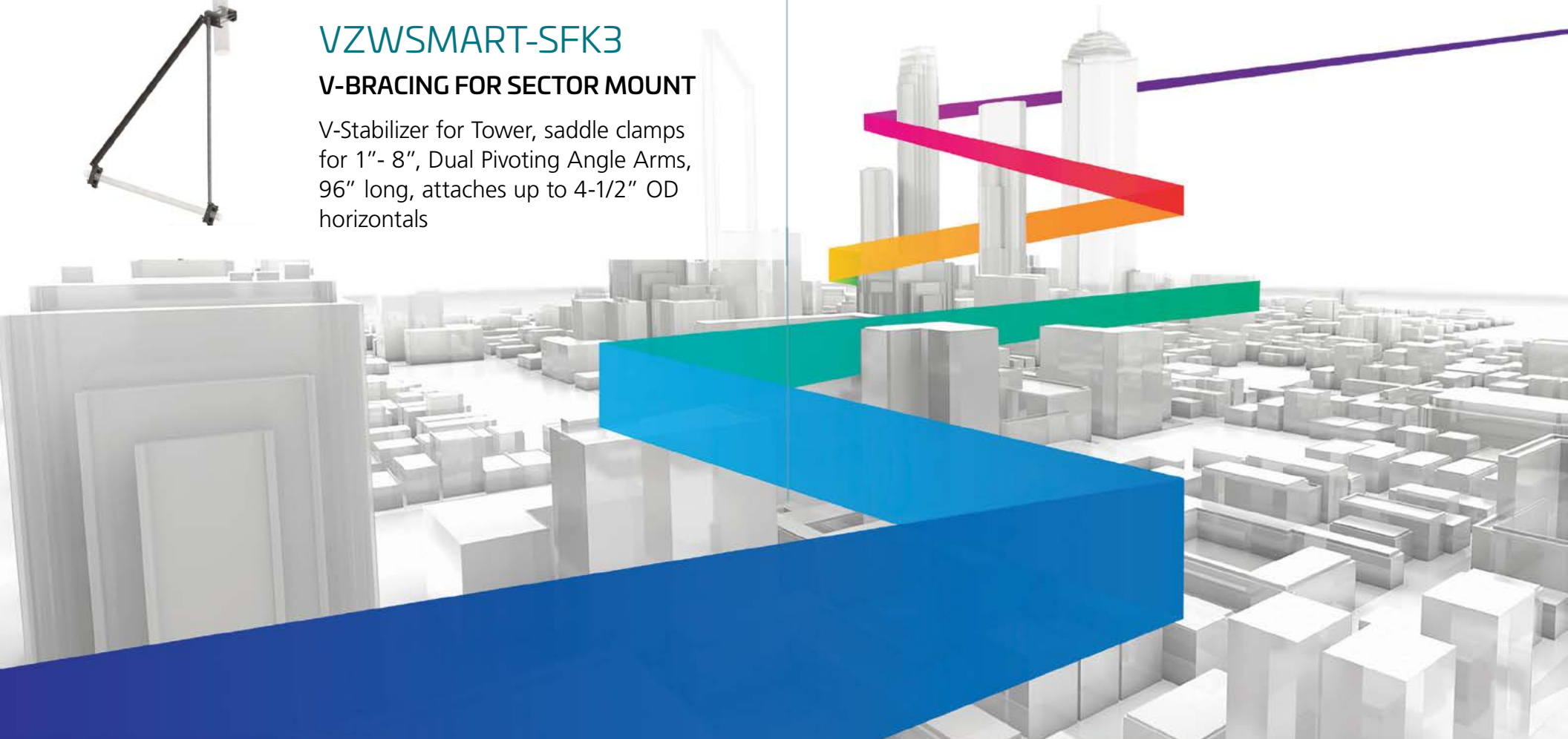
V-Stabilizer for Small Tower Leg,
Clamps for up to 3-1/2" round legs,
Dual Pivoting Angle Arms, 96" long,
attaches up to 4-1/2" OD horizontals



VZWSMART-SFK3

V-BRACING FOR SECTOR MOUNT

V-Stabilizer for Tower, saddle clamps
for 1" - 8", Dual Pivoting Angle Arms,
96" long, attaches up to 4-1/2" OD
horizontals





VZWSMART-AL333 CLIP ANGLE

Set of 2 Clip Angles with 5/8" x 2"
Hardware

VZWSMART-MSK3

PIPE TO PIPE CLAMP, 1-1/2" TO 4-1/2"

Pipe to Pipe, Clamps for 1-1/2" to 4-1/2"
Pipes



VZWSMART-MSK1 SMALL CROSSOVER PLATE, 2-3/8" OR 2-7/8" PIPES

Cross Over Plate, 2-3/8" or 2-7/8" Pipes

VZWSMART-MSK3D

CLAMP, PIPE TO PIPE, 1-1/2" TO 3-1/2", HD

Pipe to Pipe, Clamps, Wide, HD, for 1-1/2"
to 3-1/2" Pipes, with double threaded Rod



VZWSMART-MSK2 MEDIUM CROSSOVER PLATE, FOR 2-3/8" - 2-7/8" TO 3-1/2" - 4" PIPES

Crossover plate, connects 2-3/8" to
2-7/8" pipes to 3-1/2" to 4" pipes

VZWSMART-MSK4

PIPE LEVELING KIT

Pipe Mount, Tapered, No U-Bolts, attaches up to
8" OD or 60 degree angle Tower Legs, For Pipes
2-3/8" to 4-1/2" OD, U-Bolts sold separately



HARDWARE KITS



VZWSMART-MSK5 LARGE CROSSOVER PLATE, FOR 2-3/8" - 2-7/8" TO 4" - 4-1/2" PIPES

Crossover plate, connects 2-3/8" to 2-7/8" pipes to 4" to 4-1/2" pipes

VZWSMART-MSK8 CORNER SUPPORT BRACKET KIT

Corner Support Bracket Kit, Mounts to Pipe up to 4-1/2", Pipe/Corner Angle brace not included



VZWSMART-MSK6 DUAL CROSSOVER PLATE

Dual Cross Over Plate, Mounts (2) 3-1/2" to 4-1/2" Pipes to 4" or 6" Square Tube

VZWSMART-MSK9 LEG CLAMP, 1/2" TO 3-1/2"

Leg Clamp, 1/2" to 3-1/2" Round & Up to 3" Angle



VZWSMART-MSK7 CROSSOVER PLATE, PIPE TO ANGLE

Cross Over Plate, Mounts up to 4-1/2" Pipe to Angle, Pipe/Angle not included



VZWSMART-MSK10 WIRE ROPE ROUTING BRACKET

Wire Rope Routing Bracket Accessory for Ring Mounts, Ring Mount not included





VZWSMART-MSK12 UNIVERSAL CROSSOVER PLATE

Universal Crossover Plate, connects up to 4-1/2" OD x 4-1/2" OD Pipe

VZWSMART-MSK14 UNIVERSAL ADJUSTABLE CROSSOVER

Universal Adjustable Crossover Plate, connects up to 2-3/8" OD x 3-1/2" OD Pipe



VZWSMART-MSK13 UNIVERSAL CHANNEL CROSSOVER

Universal Channel Crossover Plate, connects up to 4-1/2" OD x 3-1/2" OD Pipe



GALVANIZED PIPE & ANGLE

2-3/8" Outer Diameter Pipe



Material ID	Type	Description
P40-238X048	Pipe - 2-3/8" OD x 48"	VZWSMART 48" PIPE 2 SCH40 (2.375" OD X 0.154" THK)
P40-238X072	Pipe - 2-3/8" OD x 72"	VZWSMART 72" PIPE 2 SCH40 (2.375" OD X 0.154" THK)
P40-238X096	Pipe - 2-3/8" OD x 96"	VZWSMART 96" PIPE 2 SCH40 (2.375" OD X 0.154" THK)
P40-238X120	Pipe - 2-3/8" OD x 120"	VZWSMART 120" PIPE 2 SCH40 (2.375" OD X 0.154" THK)
P40-238X126	Pipe - 2-3/8" OD x 126"	VZWSMART 126" PIPE 2 SCH40 (2.375" OD X 0.154" THK)
P40-238X150	Pipe - 2-3/8" OD x 150"	VZWSMART 150" PIPE 2 SCH40 (2.375" OD X 0.154" THK)
P40-238X174	Pipe - 2-3/8" OD x 174"	VZWSMART 174" PIPE 2 SCH40 (2.375" OD X 0.154" THK)

2-7/8" Outer Diameter Pipe



Material ID	Type	Description
P40-278X048	Pipe - 2-7/8" OD x 48"	VZWSMART 48" PIPE 2.5 SCH40 (2.875" OD X 0.203" THK)
P40-278X072	Pipe - 2-7/8" OD x 72"	VZWSMART 72" PIPE 2.5 SCH40 (2.875" OD X 0.203" THK)
P40-278X096	Pipe - 2-7/8" OD x 96"	VZWSMART 96" PIPE 2.5 SCH40 (2.875" OD X 0.203" THK)
P40-278X120	Pipe - 2-7/8" OD x 120"	VZWSMART 120" PIPE 2.5 SCH40 (2.875" OD X 0.203" THK)
P40-278X126	Pipe - 2-7/8" OD x 126"	VZWSMART 126" PIPE 2.5 SCH40 (2.875" OD X 0.203" THK)
P40-278X150	Pipe - 2-7/8" OD x 150"	VZWSMART 150" PIPE 2.5 SCH40 (2.875" OD X 0.203" THK)
P40-278X174	Pipe - 2-7/8" OD x 174"	VZWSMART 174" PIPE 2.5 SCH40 (2.875" OD X 0.203" THK)



GALVANIZED PIPE & ANGLE

3-1/2" Outer Diameter Pipe



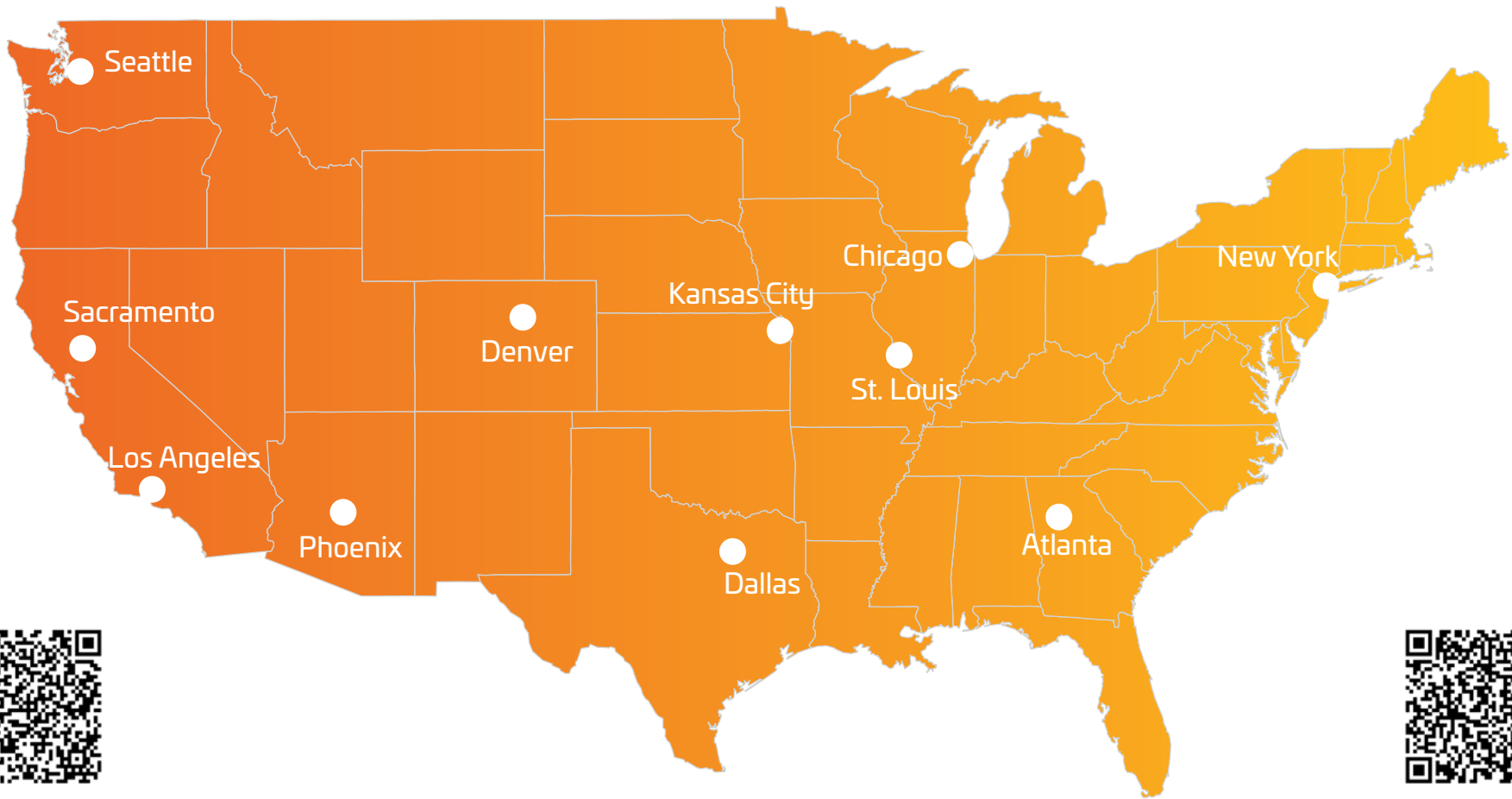
Material ID	Type	Description
P40-312X048	Pipe - 3-1/2" OD x 48"	VZWSMART 48" PIPE 3 SCH40 (3.5" OD X 0.216" THK)
P40-312X072	Pipe - 3-1/2" OD x 72"	VZWSMART 72" PIPE 3 SCH40 (3.5" OD X 0.216" THK)
P40-312X126	Pipe - 3-1/2" OD x 126"	VZWSMART 126" PIPE 3 SCH40 (3.5" OD X 0.216" THK)
P40-312X150	Pipe - 3-1/2" OD x 150"	VZWSMART 150" PIPE 3 SCH40 (3.5" OD X 0.216" THK)
P40-312X174	Pipe - 3-1/2" OD x 174"	VZWSMART 174" PIPE 3 SCH40 (3.5" OD X 0.216" THK)

Angle



Material ID	Type	Description
A-SFK3-01	Angle - 2-1/2" x 96"	VZWSMART ANGLE 2-1/2" X 2-1/2" X 1/4", 96" Long, Galvanized
A-L25X25X4X120	Angle - 2-1/2" x 120"	VZWSMART ANGLE 2-1/2" X 2-1/2" X 1/4", 120" Long Galvanized
A-L25X25X4X240	Angle - 2-1/2" x 240"	VZWSMART ANGLE 2-1/2" X 2-1/2" X 1/4", 240" Long Galvanized
A-PLK2-01	Angle - 3" x 96"	VZWSMART ANGLE 3" X 3" X 1/4", 96" Long, Galvanized
A-PLK5-01	Angle - 3" x 96"	VZWSMART ANGLE 3" X 3" X 3/16", 96" Long, Galvanized
A-L30X30X4X120	Angle - 3" x 120"	VZWSMART ANGLE 3" X 3" X 1/4", 120" Long, Galvanized
A-L30X30X4X240	Angle - 3" x 240"	VZWSMART ANGLE 3" X 3" X 1/4", 240" Long, Galvanized
A-L40X40X4X120	Angle - 4" x 120"	VZWSMART ANGLE 4" X 4" X 1/4", 120" Long, Galvanized
A-L40X40X4X240	Angle - 4" x 240"	VZWSMART ANGLE 4" X 4" X 1/4", 240" Long, Galvanized
A-L50X30X6X120	Angle - 5" x 3" x 120"	VZWSMART ANGLE 5" X 3" X 3/8", 120" Long, Galvanized
A-L50X50X6X120	Angle - 5" x 120"	VZWSMART ANGLE 5" X 5" X 3/8", 120" Long, Galvanized





Latest online guide



View our full product line

Available From



For product support questions,
email us directly at: Steelproducts@commscope.com

For Engineering Resources and More:
Register or Log Into [“My CommScope”](#)

CommScope pushes the boundaries of communications technology with game-changing ideas and ground-breaking discoveries that spark profound human achievement.

We collaborate with our customers and partners to design, create and build the world's most advanced networks. It is our passion and commitment to identify the next opportunity and realize a better tomorrow. Discover more at commscope.com.

commscope.com

Visit our website or contact your local CommScope representative for more information.

© 2024 CommScope, Inc. All rights reserved.

CommScope and the CommScope logo are registered trademarks of CommScope and/or its affiliates in the U.S. and other countries. For additional trademark information see <https://www.commscope.com/trademarks>. All product names, trademarks and registered trademarks are property of their respective owners.

CO-1167294-EN (04/24)