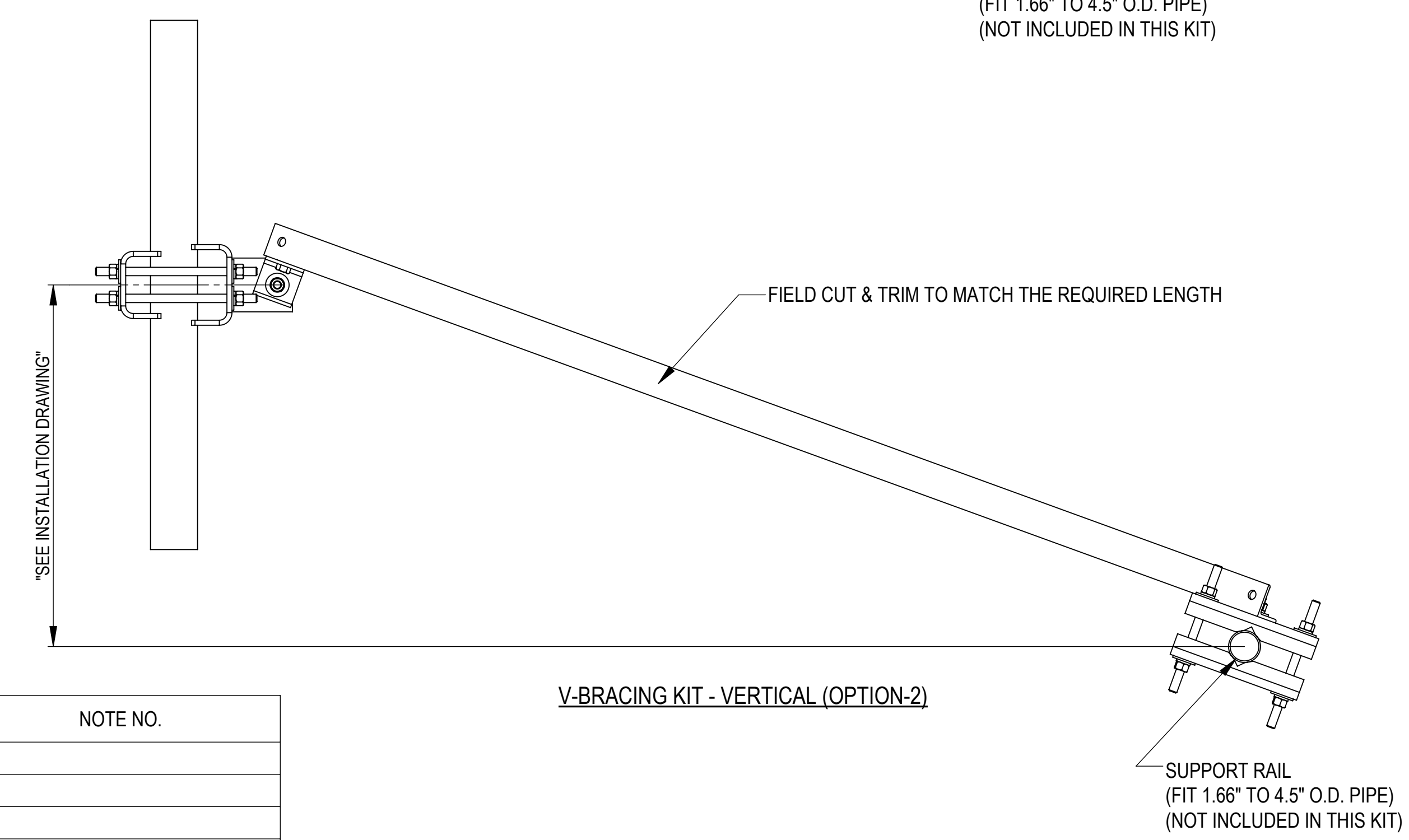
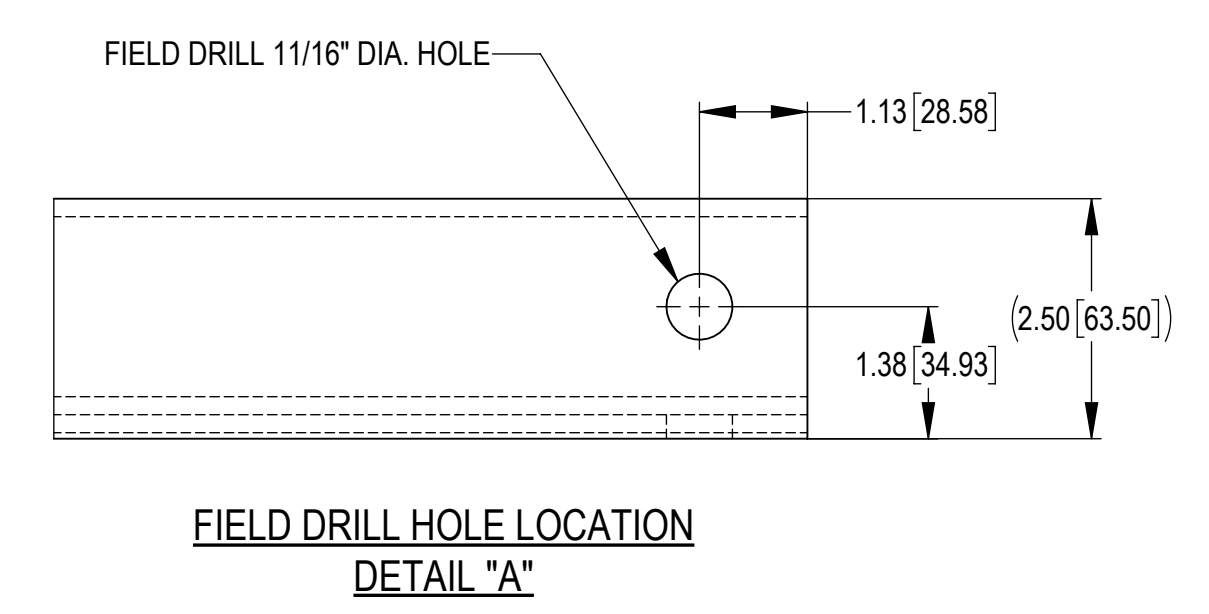
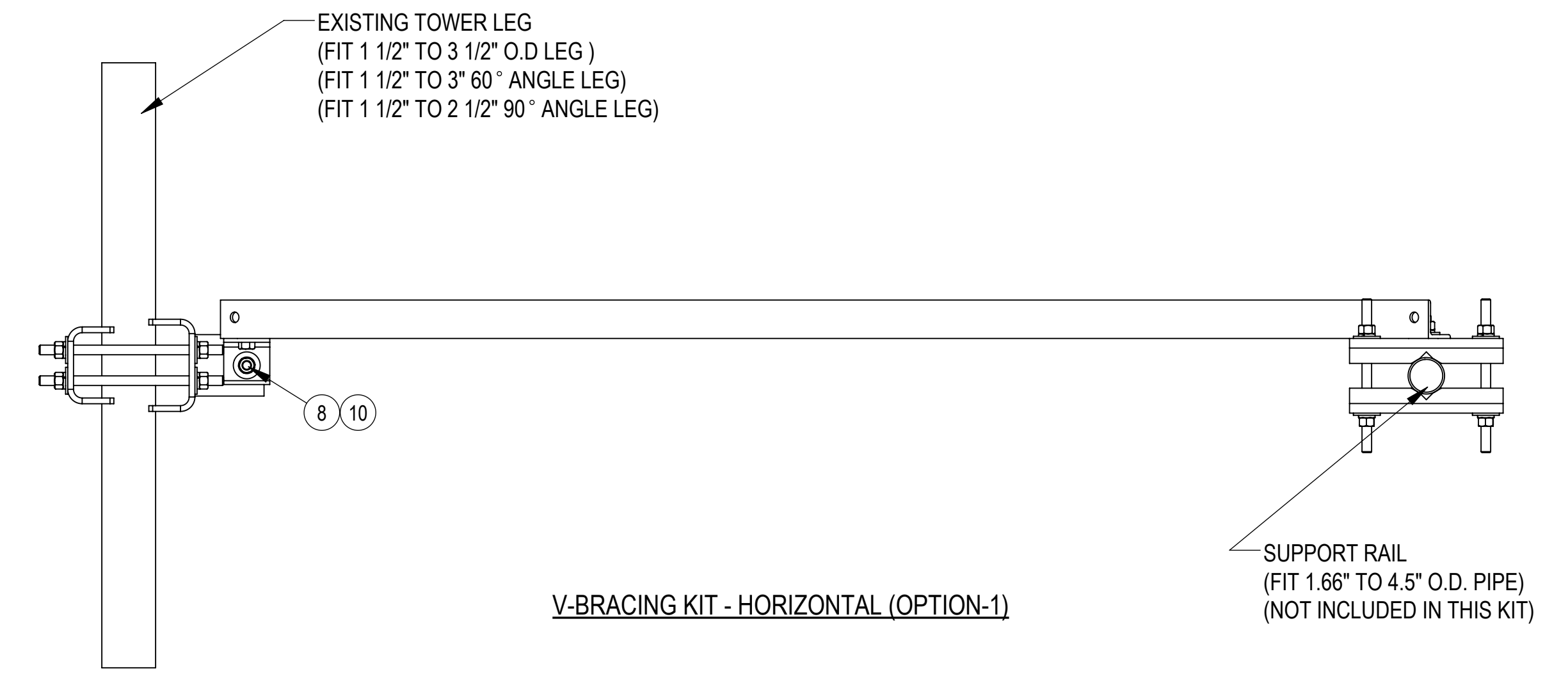
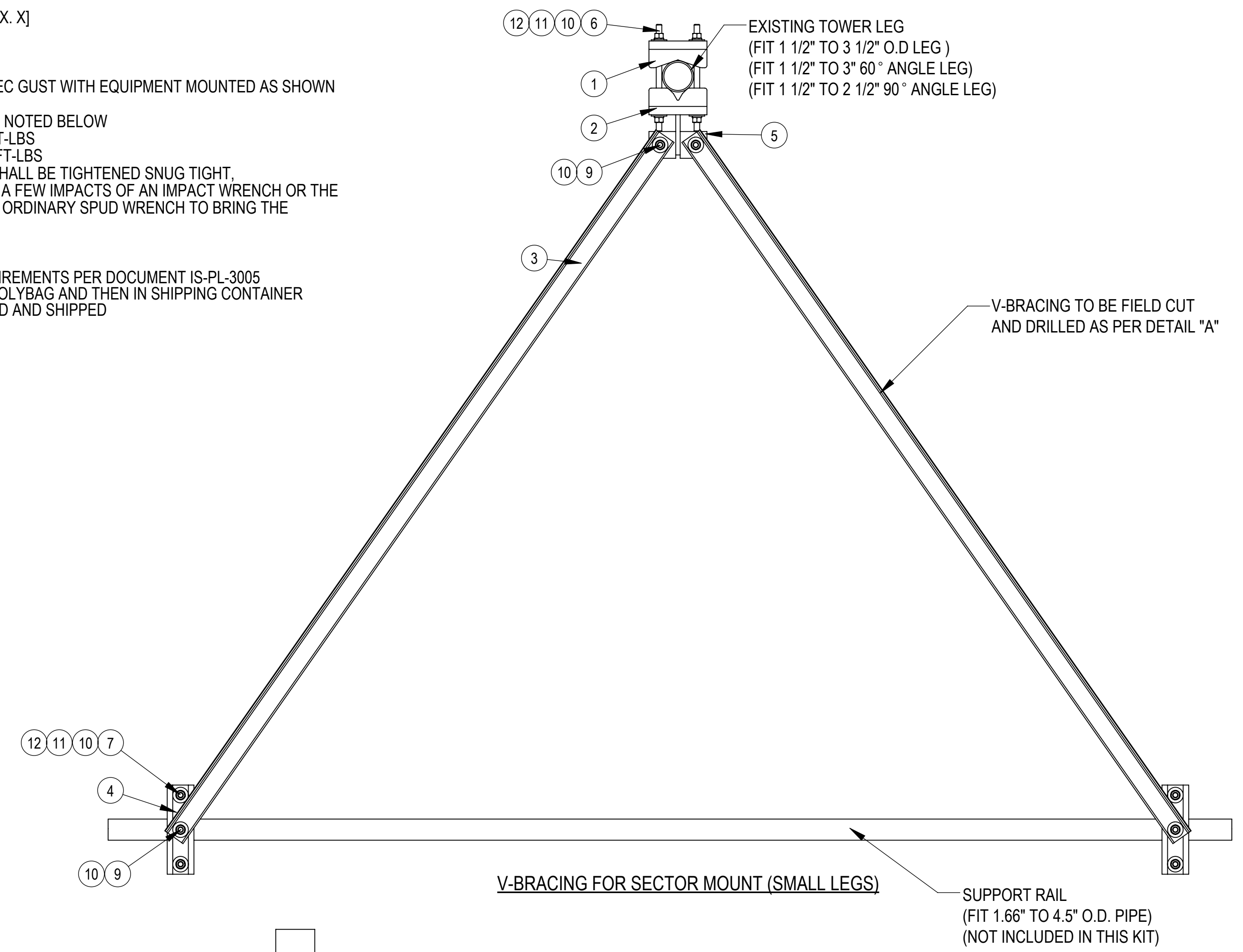


NOTES:
 1.0 GENERAL NOTES
 1.1 ALL METRIC DIMENSIONS ARE IN BRACKETS [X. X]
 1.2 MARK PART WITH IDENTIFICATION NUMBER
 1.3 FOR PATENT INFO: <https://www.cs-pat.com>
 2.0 DESIGN NOTES
 2.1 DESIGN SURVIVAL WIND SPEED: 150 MPH, 3 SEC GUST WITH EQUIPMENT MOUNTED AS SHOWN
 3.0 MANUFACTURING/SPECIAL REQUIREMENTS
 3.1 TORQUE HARDWARE ACCORDING TO SIZE AS NOTED BELOW
 ALL HARDWARE 1/4" DIAMETER: TORQUE 7 FT-LBS
 ALL HARDWARE 3/8" DIAMETER: TORQUE 12 FT-LBS
 ALL HARDWARE 1/2" DIAMETER OR LARGER SHALL BE TIGHTENED SNUG TIGHT.
 DEFINED AS THE CONDITION OBTAINED WITH A FEW IMPACTS OF AN IMPACT WRENCH OR THE FULL EFFORT OF AN IRONWORKER USING AN ORDINARY SPUD WRENCH TO BRING THE CONNECTED PLIES INTO FIRM CONTACT.
 4.0 TEST
 5.0 PACKAGING
 5.1 PACKAGING SHALL MEET COMMSCOPE REQUIREMENTS PER DOCUMENT IS-PL-3005
 5.2 PRINTED DOCUMENT TO BE PLACED INSIDE POLYBAG AND THEN IN SHIPPING CONTAINER
 5.3 EXTRA HARDWARE MAYBE SUPPLIED, BAGGED AND SHIPPED

REV.	ECN	REVISIONS DESCRIPTION	BY	DATE
A	13539	INITIAL RELEASE	YMENG	07/13/2021



ITEM NO.	PART NUMBER	DESCRIPTION	QTY.	NOTE NO.
1	BP9625-65	CLAMP, V-BRACING BACK	1	
2	BRKW-VBSM-SL	WELDMENT, V-BRACING FRONT CLAMP	1	
3	L252525-8	ANGLE, BRACE	2	
4	BP6875-10	CLAMP, V-BRACING FRONT	4	
5	AL-333	BRACKET, V-BRACING CLIP	2	
6	MT-381	5/8" X 12" GALV THREADED ROD	4	
7	MT-381-10	5/8" X 10" GALV THREADED ROD	4	
8	GB-05225	5/8" X 2-1/4" GALV BOLT KIT	1	INCLUDES NUT, LOCK WASHER
9	GB-05165	5/8" X 1-3/4" GALV BOLT KIT	4	INCLUDES NUT, LOCK WASHER
10	GWF-05	5/8" GALV FLAT WASHER, 1.7OD	21	
11	GWL-05	5/8" GALV LOCK WASHER	16	
12	GN-05	5/8" GALV HEX NUT	16	

COMMSCOPE, INC. OF NORTH CAROLINA
 SAP MATERIAL MASTER
VZWSMART-SFK3-SL

TOLERANCES
 0 PLACE X ± .25 2 PLACE XX ± 0.06
 1 PLACE .X ± 0.12 ANGLES ± 2°

FINISH: GALV A123 MATERIAL: A529, A1011/A1018

NAME	DATE	TITLE
CE YMENG	07/13/2021	V-BRACING KIT FOR SMALL LEGS
RW YMENG	07/14/2021	
AD BCAMPBELLCON	07/20/2021	
RE HDAI	07/21/2021	

SCALE: 1:24 DOCUMENT NO.: VZWSMART-SFK3-SL

SIZE	Auth Group	INSL	MODEL	REVISION	VERSION	STATUS	REVISION	VERSION	STATUS	REVISION	VERSION	STATUS	REVISION	SHEET
D				00	RE	A	00	RE	A	00	RE	A	00	1 OF 1

DENSITY	0.28	lbs/in ³
MASS	32.10	lbs
VOLUME	112.90	in ³
SURFACE AREA	938.37	in ²
HEIGHT		
LENGTH		
WIDTH		