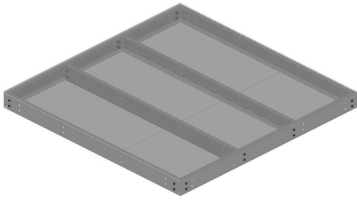


# EQ-P1020-B

---



Equipment Platform, 10 ft x 20 ft, base only

## Product Classification

**Product Type** Equipment platform system

## General Specifications

**Legs, quantity** 0

## Dimensions

**Height** 203.2 mm | 8 in

**Width** 3048 mm | 120 in

**Length** 6096 mm | 240 in

## Material Specifications

**Material Type** Hot dip galvanized steel

## Mechanical Specifications

**Load Capacity** Up to 10,000 lb (4536 kg) loading

## Packaging and Weights

**Included** Frame | Grating | Hardware

**Packaging quantity** 1

**Weight, net** 1,363.5 kg | 3,005.999 lb

## Regulatory Compliance/Certifications

### Agency

ISO 9001:2015

### Classification

Designed, manufactured and/or distributed under this quality management system

