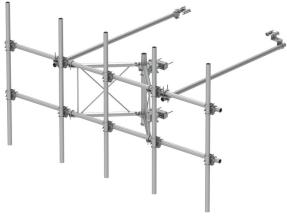


SFG23HDX-14-5-96



G23HDX High Capacity Sector Frame, 14.5 ft x 2.88 in OD face pipes, includes five 2.88 OD x 96 in antenna pipes

Product Classification

Product Type	High capacity Tower sector frame
Product Series	G2
Ordering Note	NSTD445 Compliant

General Specifications

Application	4G LTE antenna/radio mount
Mounting	Angle 60°, 203.2 mm (8 in) Straight or tapered legs up to 203.2 mm (8 in) OD
Patent Number	Patent pending
Pipe, quantity	5
Sectors, quantity	1
Tower Taper	Non-tapered Tapered

Dimensions

Height	2,438.4 mm 96 in
Face Width	4.42 m 14.5 ft
Width	4,419.6 mm 174 in
Pipe Length	2,438.4 mm 96 in
Face Support Pipe Diameter	73.025 mm 2.875 in
Mounting Diameter, maximum	218.44 mm 8.6 in
Mounting Diameter, minimum	38.1 mm 1.5 in
Pipe Outer Diameter	73.025 mm 2.875 in
Stand-off Distance	1,066.8 mm 42 in

Material Specifications

Material Type	Hot dip galvanized steel
----------------------	--------------------------

Mechanical Specifications

SFG23HDX-14-5-96

Wind Rating For Specifications, please contact steelproducts@commscope.com or call 800-255-1479

Wind Rating Test Method TIA/EIA-222-G

Packaging and Weights

Included Frame | Pipe mounts | Plain end pipes | Stiff arms (2) | Tower attachment

Packaging quantity 1

* Footnotes

Wind Rating BWS—Base Wind Speed; FBC—Florida Building Code