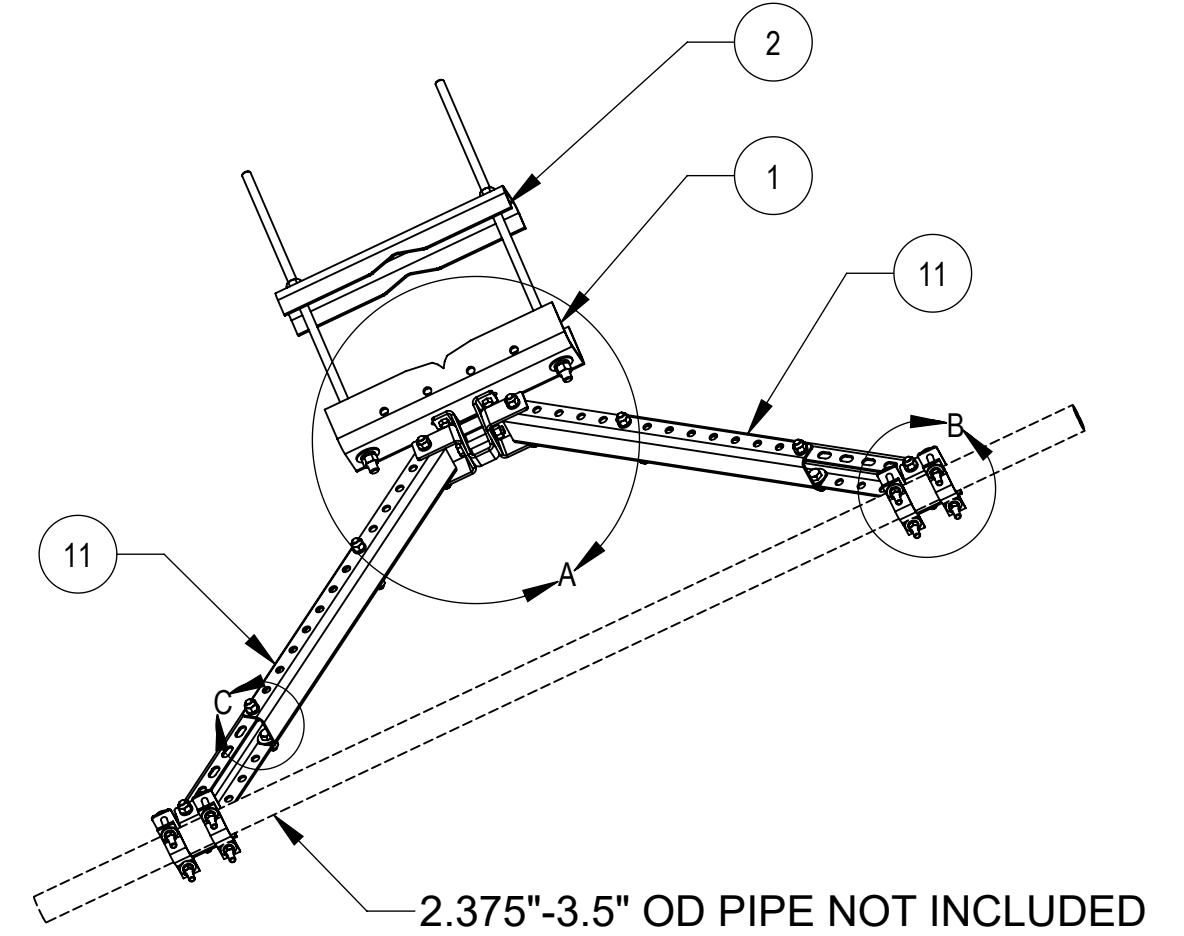
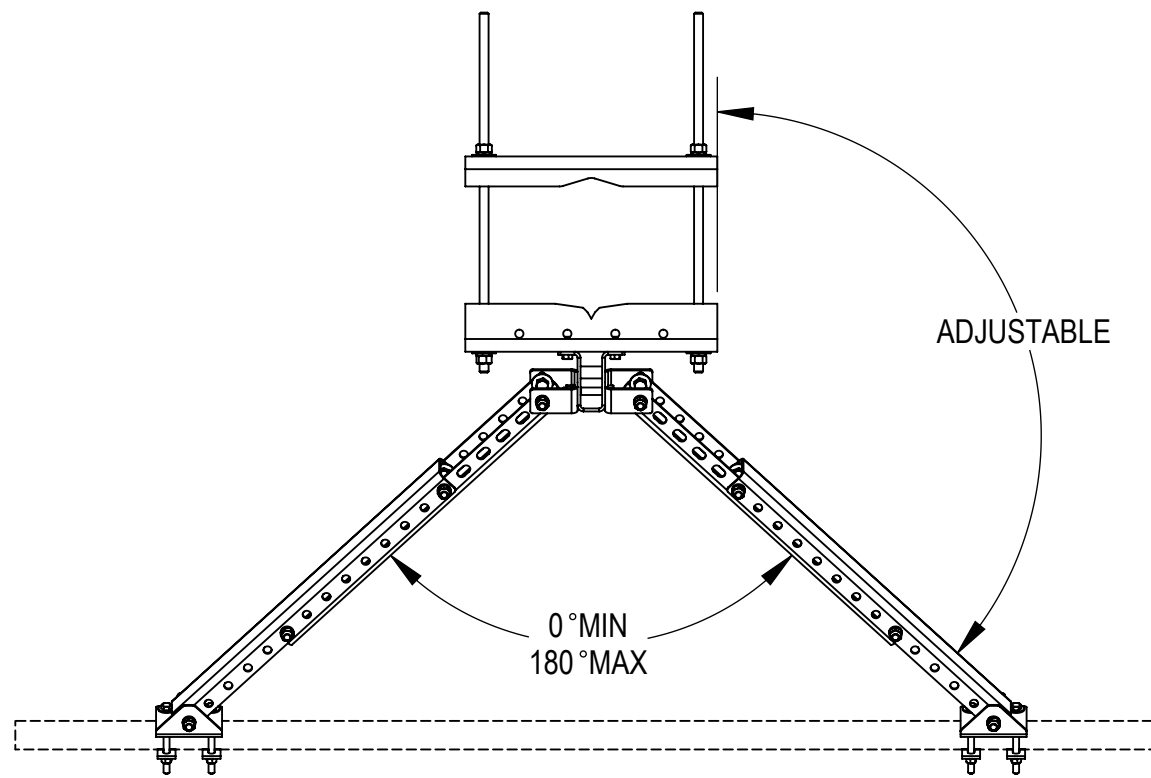
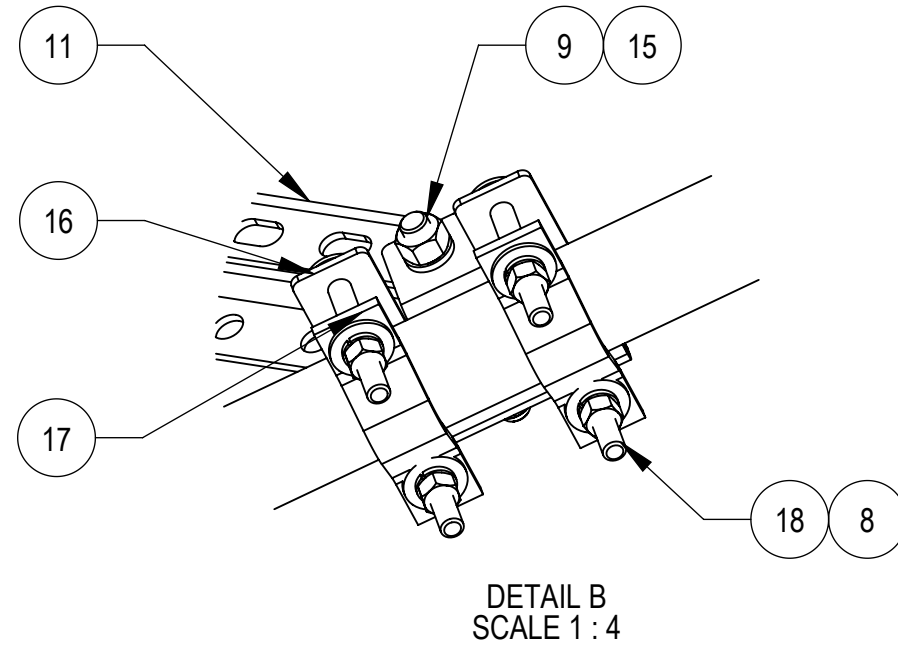
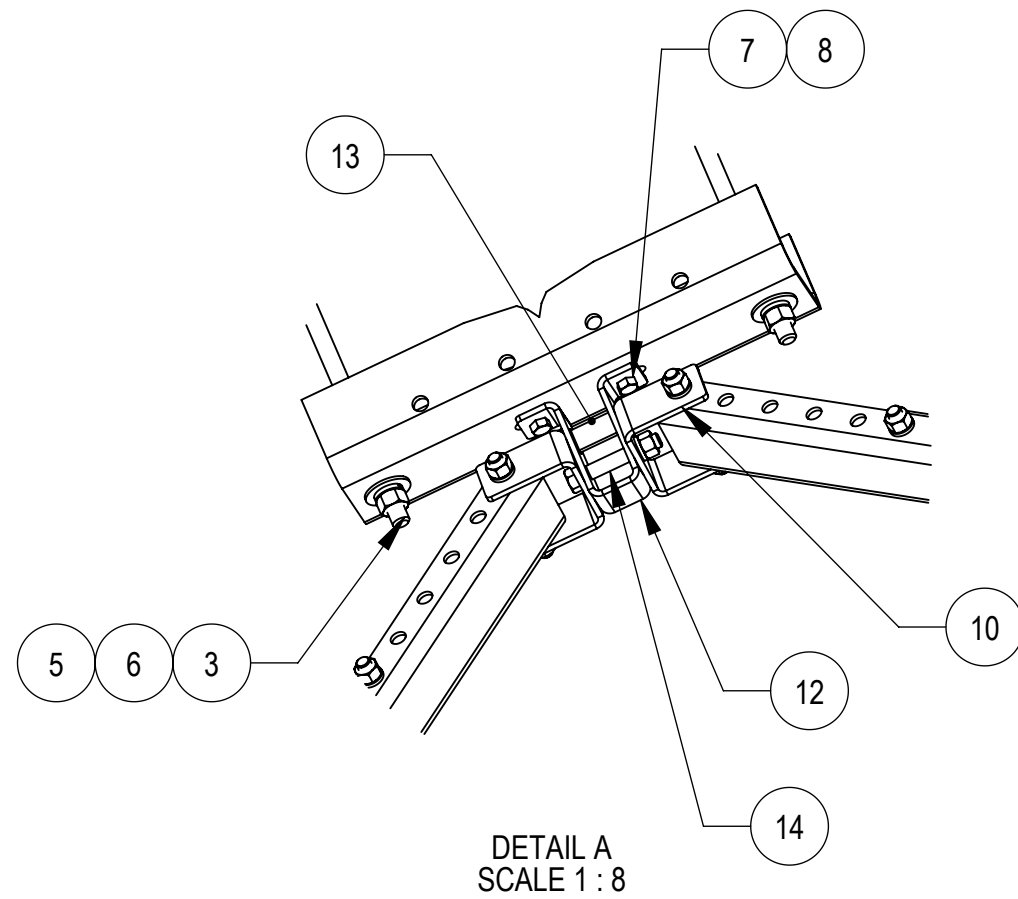


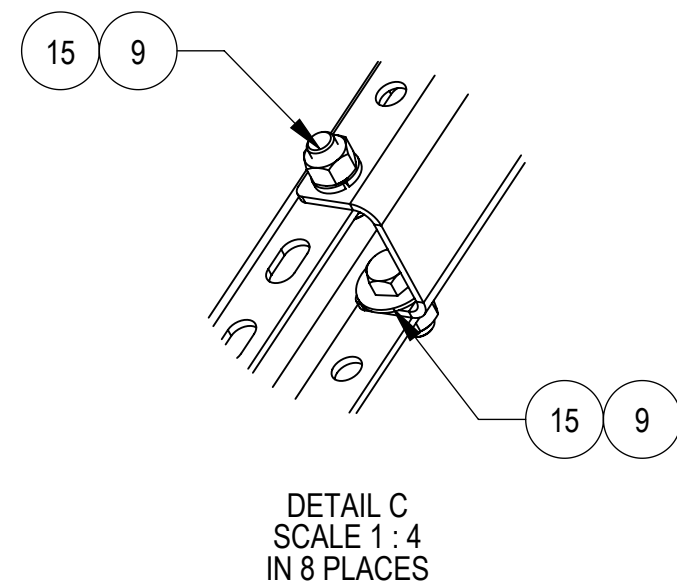
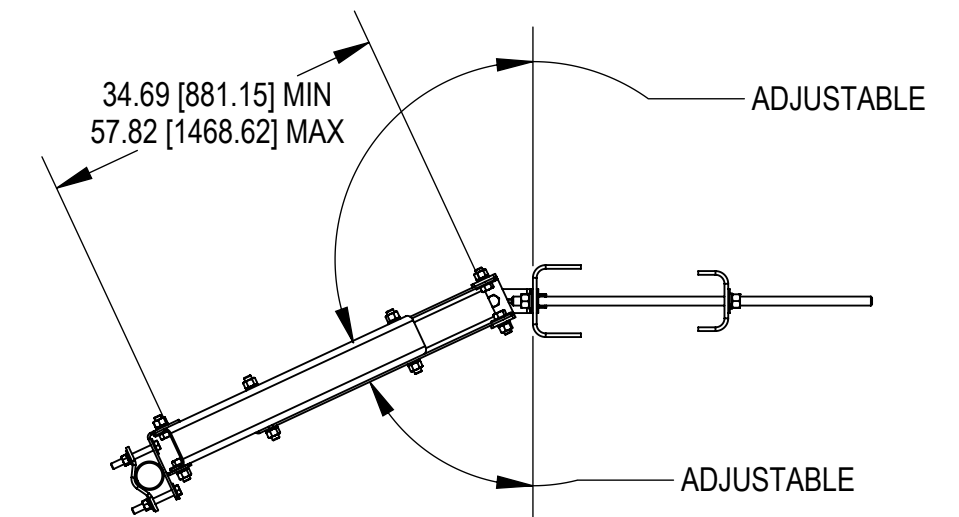
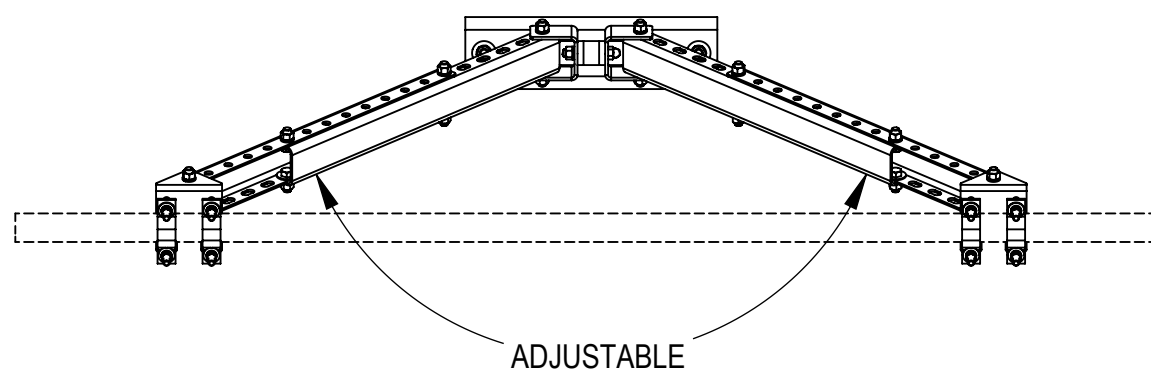
NOTES:

1. GENERAL
 - 1.1 ALL METRIC DIMENSIONS ARE IN BRACKETS
 - 1.2 MARK PART WITH IDENTIFICATION NUMBER
2. DESIGN NOTES
 - 2.1 FITS TOWER LEGS 8" TO 16" OD
 - 2.2 ALL DIMENSIONS SHOWN ARE FOR REFERENCE ONLY
ALL CONNECTIONS ARE ADJUSTABLE. FINAL INSTALLED APPLICATION DICTATES FINISHED DIMENSIONS
3. MANUFACTURING/SPECIAL REQUIREMENTS
 - 3.1 TIGHTEN ALL BOLTS SECURING FLAT PLATES BY THE TURN-OF-NUT OF THE U-BOLT METHOD. TIGHTEN ALL U-BOLTS USING TURN-OF-NUT METHOD WITH ATTENTION TO LEAVE EQUAL DISTANCE AND EQUAL FORCE ON EACH LEG
 - 3.2 FINISH: GALVANIZE ASTM A123
4. TEST
5. PACKAGING
 - 5.1 PACKAGING SHALL MEET COMMSCOPE REQUIREMENTS PER DOCUMENT IS-PL-3005

REVISIONS				
REV.	ECN	DESCRIPTION	BY	DATE
A	15185PC	NEW RELEASED.	XZ1054	10/18/2021



UP TO ±90° AZIMUTH ADJUSTMENT OFF APEX



ITEM NO.	PART NUMBER	DESCRIPTION	QTY.	WEIGHT	NOTE NO.
1	SMU201601	LARGE SADDLE MOUNT, 16" TOWER LEG	1	9.39 LBS	
2	SMU201602	CLAMP PLATE	1	7.004 LBS	
3	MT38430B7	3/4" X 30" GALV THREADED ROD, GRADE B7	2	3.73 LBS	
4	GWF-06	3/4" GALV FLAT WASHER	6	0.1 LBS	
5	GWL-06	3/4" GALV LOCK WASHER	6	3.73 LBS	
6	GN-06	3/4" GALV HEX NUT	5	0.1 LBS	
7	GB-04145	1/2" X 1-1/2" GALV BOLT KIT	2	0.13 LBS	
8	GWF-04	1/2" GALV FLAT WASHER	18	0.04 LBS	
9	GB-05145	5/8" X 1-1/2" GALV BOLT KIT	16	0.25 LBS	
10	VSRC-2000	BRACKET, PIVOT	2	1.77 LBS	
11	MCPM-2100	ARM, 31.5" SUPPORT	4	10.72 LBS	
12	VSRC-1100	BRACKET, PIVOT ATTACHMENT	1	2.04 LBS	
13	VSRC-1200	BRACKET, PIVOT ATTACHMENT WELD PART	1	0.173 LBS	
14	GB-05365	5/8" X 3-3/4" GALV BOLT KIT	1	1.0 LBS	
15	GWF-05	5/8" GALV FLAT WASHER, 1.7OD	16	0.04 LBS	
16	VSRC-3000	CHANNEL MOUNT FOR VSRC	2	2.33 LBS	
17	ACP10	1.5" - 3.5" O.D. CLAMP HALF	4	0.6 LBS	
18	1204FTB	1/2" x 4" FULL THREAD GALV. BOLT	8	0.28 LBS	

DENSITY	0.28	lbs/in ³
MASS	135.16	lbs
VOLUME	477.55	in ³
SURFACE AREA		in ²
HEIGHT		
LENGTH		
WIDTH		

COMMSCOPE, INC. OF NORTH CAROLINA

TOLERANCES		SAP MATERIAL MASTER	
1 PLACE .X ± 0.25	3 PLACE .XXX ± 0.06	VSRC-TL-B	
2 PLACE .XX ± 0.12	ANGLES ± 2°		
FINISH SEE NOTE 3.2		MATERIAL SEE BOM	
UNLESS OTHERWISE SPECIFIED DIMENSIONS ARE IN INCHES INTERPRET PER ANSI Y 14.5M-1994		NAME	DATE
		CE XZ1054	10/18/2021
		RW XZ1054	11/30/2021
		AD BA1025	11/30/2021
ECN 15185PC		RE XZ1054	12/01/2021
TITLE VERTICAL STABILIZER CHANNEL TW 8"-16"		SCALE 1:16	DOCUMENT NO. VSRC-TL-B
SIZE C	Auth Group INSL	MODEL VERSION STATUS REVISION	DRAWING VERSION STATUS REVISION
		00 RE A	00 RE A
SHEET 1 OF 2			

4

3

2

1

D

D

C

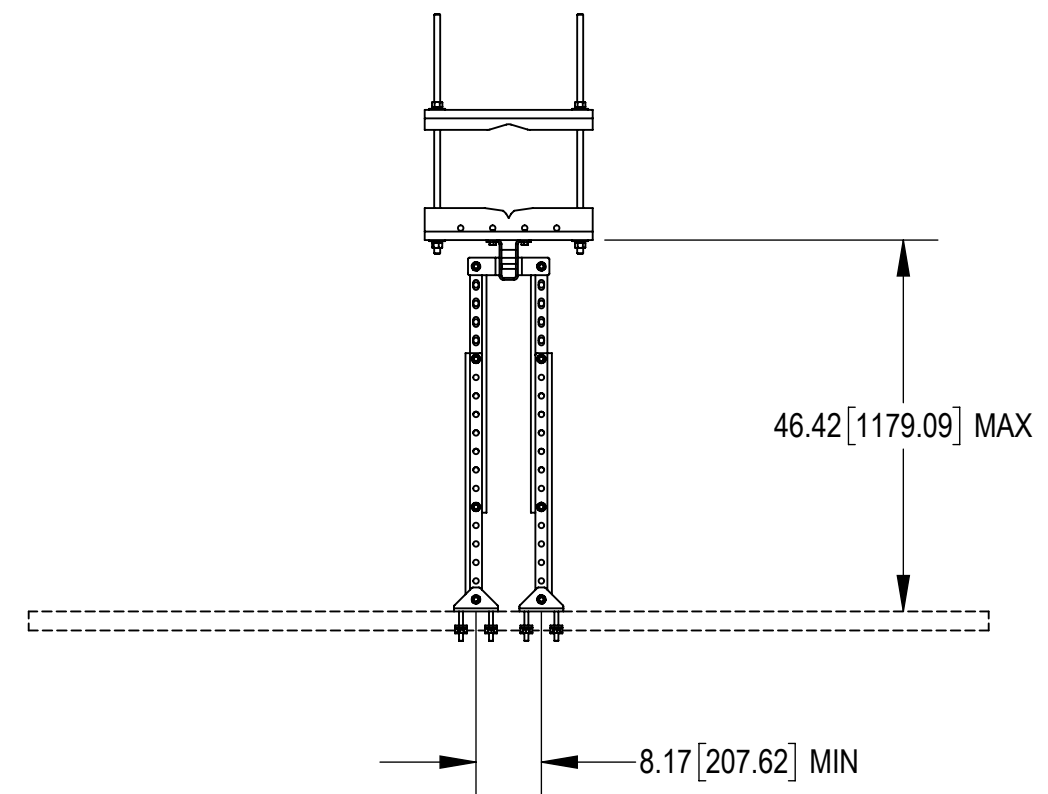
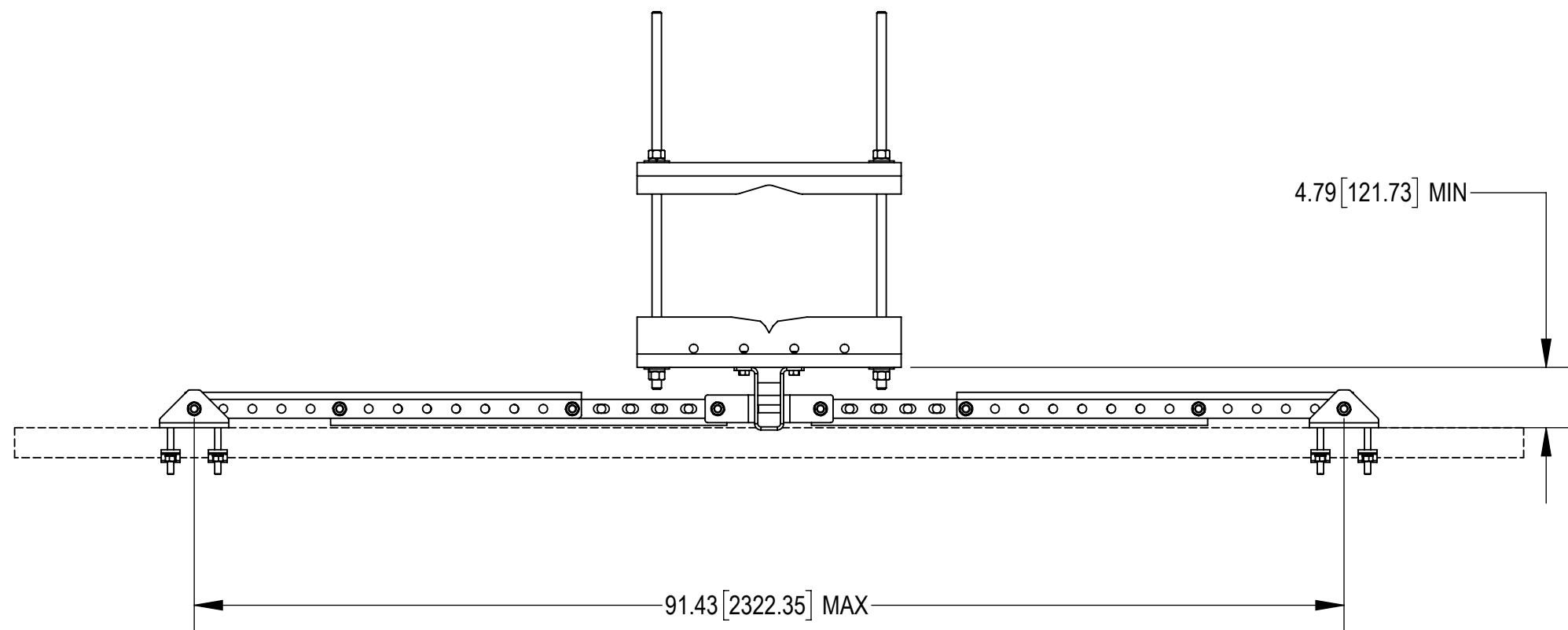
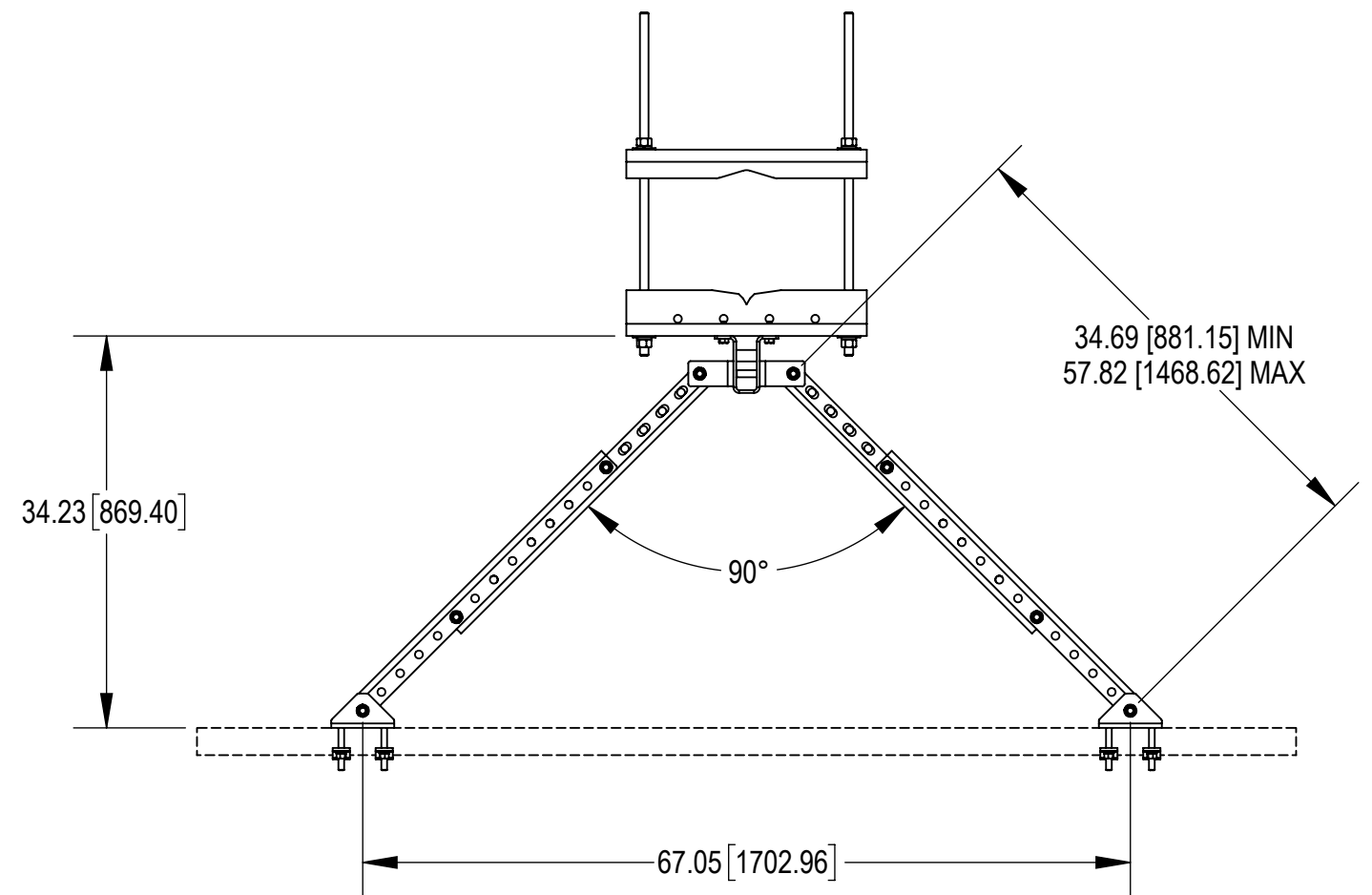
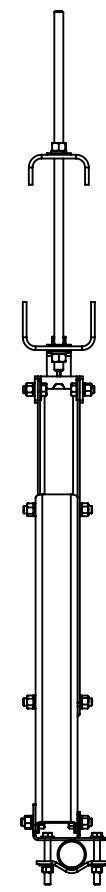
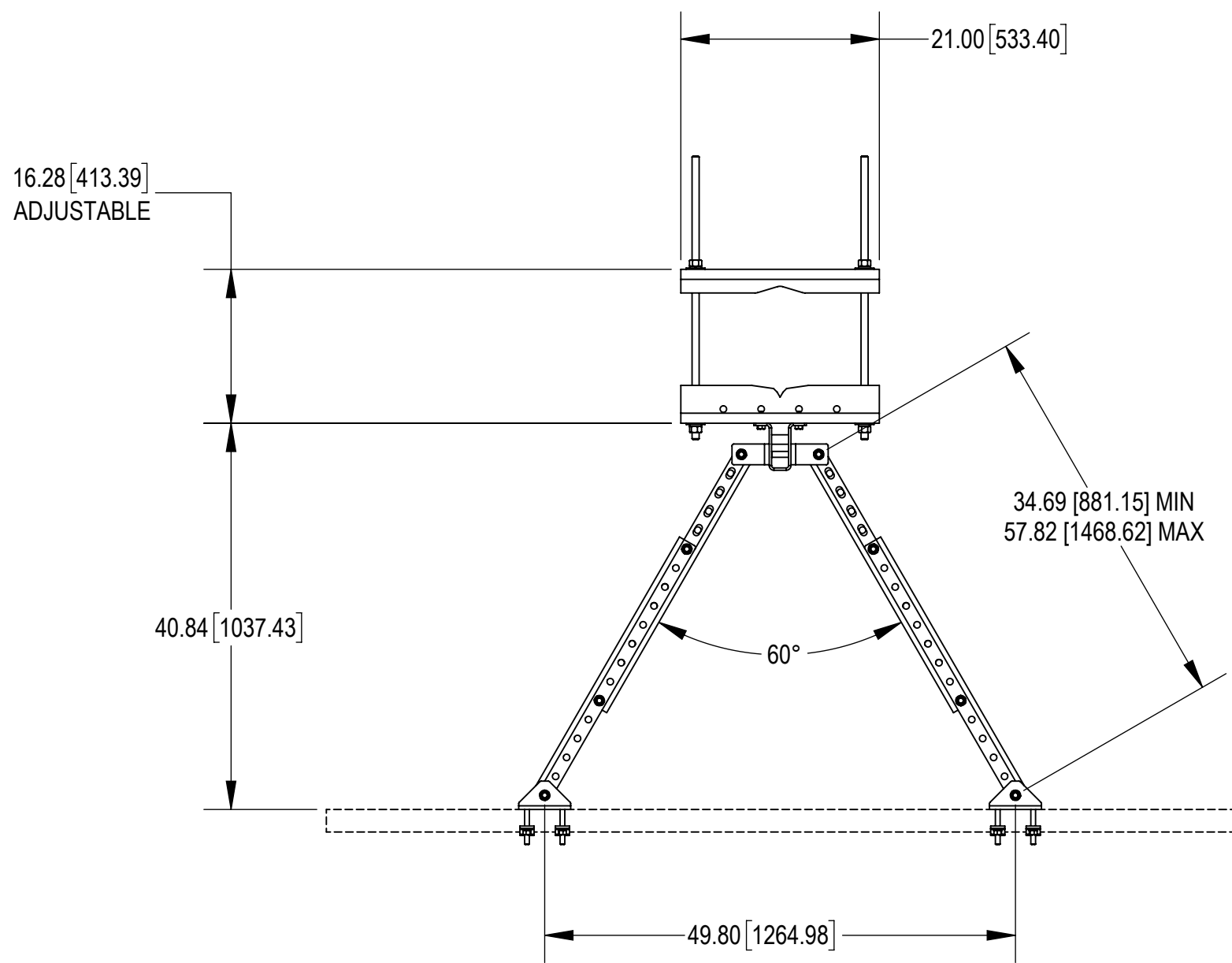
C

B

B

A

A



COMMSCOPE, INC. OF NORTH CAROLINA				
TITLE VERTICAL STABILIZER CHANNEL TW 8"-16"				
SIZE C	SCALE 1:16	DOCUMENT NO. VSRC-TL-B		
		DRAWING		SHEET
		VERSION	STATUS	REVISION
		00	RE	A
				2 OF 2

© 2021 CommScope, Inc. Confidential

4

3

2

1