

RRV4-6585B-R6H4



12-port sector antenna, 4x 694–960MHz, 65° HPBW and 8x 1695–2690 MHz, 85° HPBW, 6x RET

- All Internal RET actuators are connected in “Cascaded SRET” configuration
- Antenna shape optimized for wind load reduction

General Specifications

Antenna Type	Sector
Band	Multiband
Color	Light Gray (RAL 7035)
Grounding Type	RF connector inner conductor and body grounded to reflector and mounting bracket
Performance Note	Outdoor usage
Radome Material	Fiberglass, UV resistant
Reflector Material	Aluminum
RF Connector Interface	4.3-10 Female
RF Connector Location	Bottom
RF Connector Quantity, high band	8
RF Connector Quantity, low band	4
RF Connector Quantity, total	12

Remote Electrical Tilt (RET) Information

RET Hardware	CommRET v2
RET Interface	8-pin DIN Female 8-pin DIN Male
RET Interface, quantity	2 female 2 male
Input Voltage	10–30 Vdc
Internal RET	High band (4) Low band (2)
Power Consumption, active state, maximum	8 W
Power Consumption, idle state, maximum	1 W
Protocol	3GPP/AISG 2.0

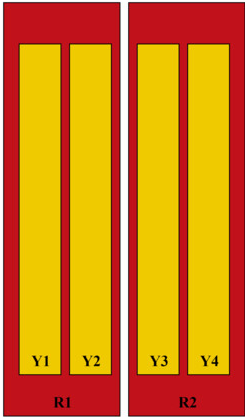
Dimensions

Width	498 mm 19.606 in
--------------	--------------------

RRV4-6585B-R6H4

Depth	197 mm 7.756 in
Length	2180 mm 85.827 in
Net Weight, antenna only	42 kg 92.594 lb

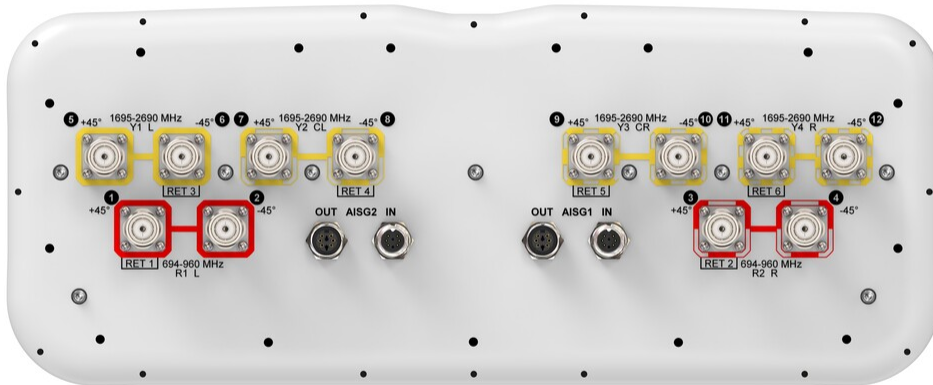
Array Layout



Array ID	Frequency (MHz)	RF Connector	HPBW	RET (SRET)	AISG No.	AISG RET UID
R1	694-960	1 - 2	65°	1	AISG1	CPxxxxxxxxxxxxxxxxR1
R2	694-960	3 - 4	65°	2	AISG1	CPxxxxxxxxxxxxxxxxR2
Y1	1695-2690	5 - 6	85°	3	AISG1	CPxxxxxxxxxxxxxxxxY1
Y2	1695-2690	7 - 8	85°	4	AISG1	CPxxxxxxxxxxxxxxxxY2
Y3	1695-2690	9 - 10	85°	5	AISG1	CPxxxxxxxxxxxxxxxxY3
Y4	1695-2690	11 - 12	85°	6	AISG1	CPxxxxxxxxxxxxxxxxY4

(Sizes of colored boxes are not true depictions of array sizes)

Port Configuration



Electrical Specifications

RRV4-6585B-R6H4

Impedance	50 ohm
Operating Frequency Band	1695 – 2690 MHz 694 – 960 MHz
Polarization	±45°
Total Input Power, maximum	900 W @ 50 °C

Electrical Specifications

Frequency Band, MHz	694–790	790–862	870–960	1710–1880	1920–2170	2490–2690
Gain, dBi	15.4	15.5	16	17.2	18.2	19
Beamwidth, Horizontal, degrees	71	64	63	83	77	66
Beamwidth, Vertical, degrees	10.3	9.3	8.6	5.8	5.2	4.2
Beam Tilt, degrees	2–14	2–14	2–14	2–12	2–12	2–12
USLS (First Lobe), dB	17	17	20	17	15	18
Front-to-Back Ratio at 180°, dB	32	31	30	34	28	32
Isolation, Cross Polarization, dB	28	28	28	25	25	25
Isolation, Inter-band, dB	28	28	28	27	27	27
VSWR Return loss, dB	1.5 14.0	1.5 14.0	1.5 14.0	1.5 14.0	1.5 14.0	1.5 14.0
PIM, 3rd Order, 2 x 20 W, dBc	-153	-153	-153	-153	-153	-153
Input Power per Port at 50°C, maximum, watts	250	250	250	200	200	150

Electrical Specifications, BASTA

Frequency Band, MHz	694–790	790–862	870–960	1710–1880	1920–2170	2490–2690
Gain by all Beam Tilts, average, dBi	15	15.3	15.6	16.6	17.5	18.5
Gain by all Beam Tilts Tolerance, dB	±0.4	±0.4	±0.6	±0.7	±0.8	±0.7
Beamwidth, Horizontal Tolerance, degrees	±6.8	±3.8	±3.3	±6.7	±9.4	±6.8
Beamwidth, Vertical Tolerance, degrees	±0.6	±0.7	±0.7	±0.4	±0.4	±0.2
USLS, beampeak to 20° above beampeak, dB	17	16	16	14	14	15
Front-to-Back Total Power at 180° ± 30°, dB	21	22	22	26	23	26
CPR at Boresight, dB	22	21	20	19	18	15

RRV4-6585B-R6H4

CPR at Sector, dB	12	8	12	8	8	4
--------------------------	----	---	----	---	---	---

Mechanical Specifications

Wind Loading @ Velocity, frontal	760.0 N @ 150 km/h (170.9 lbf @ 150 km/h)
Wind Loading @ Velocity, lateral	233.0 N @ 150 km/h (52.4 lbf @ 150 km/h)
Wind Loading @ Velocity, maximum	911.0 N @ 150 km/h (204.8 lbf @ 150 km/h)
Wind Loading @ Velocity, rear	523.0 N @ 150 km/h (117.6 lbf @ 150 km/h)
Wind Speed, maximum	241 km/h (150 mph)

Packaging and Weights

Width, packed	565 mm 22.244 in
Depth, packed	309 mm 12.165 in
Length, packed	2367 mm 93.189 in
Weight, gross	56.5 kg 124.561 lb

Regulatory Compliance/Certifications

Agency	Classification
CHINA-ROHS	Above maximum concentration value
ISO 9001:2015	Designed, manufactured and/or distributed under this quality management system
ROHS	Compliant/Exempted
UK-ROHS	Compliant/Exempted



Included Products

BSAMNT-4	-	Wide Profile Antenna Downtilt Mounting Kit for 2.4 - 4.5 in (60 - 115 mm) OD round members. Kit contains one scissor top bracket set and one bottom bracket set.
----------	---	--

* Footnotes

Performance Note	Severe environmental conditions may degrade optimum performance
-------------------------	---

BSAMNT-4



Wide Profile Antenna Downtilt Mounting Kit for 2.4 - 4.5 in (60 - 115 mm) OD round members. Kit contains one scissor top bracket set and one bottom bracket set.

Product Classification

Product Type Downtilt mounting kit

General Specifications

Application Outdoor

Color Silver

Dimensions

Compatible Diameter, maximum 115 mm | 4.528 in

Compatible Diameter, minimum 60 mm | 2.362 in

Weight, net 6.5 kg | 14.33 lb

Material Specifications

Material Type Galvanized steel

Packaging and Weights

Included Brackets | Hardware

Packaging quantity 1

Regulatory Compliance/Certifications

Agency	Classification
CHINA-ROHS	Below maximum concentration value
ISO 9001:2015	Designed, manufactured and/or distributed under this quality management system
REACH-SVHC	Compliant as per SVHC revision on www.commscope.com/ProductCompliance
ROHS	Compliant
UK-ROHS	Compliant

