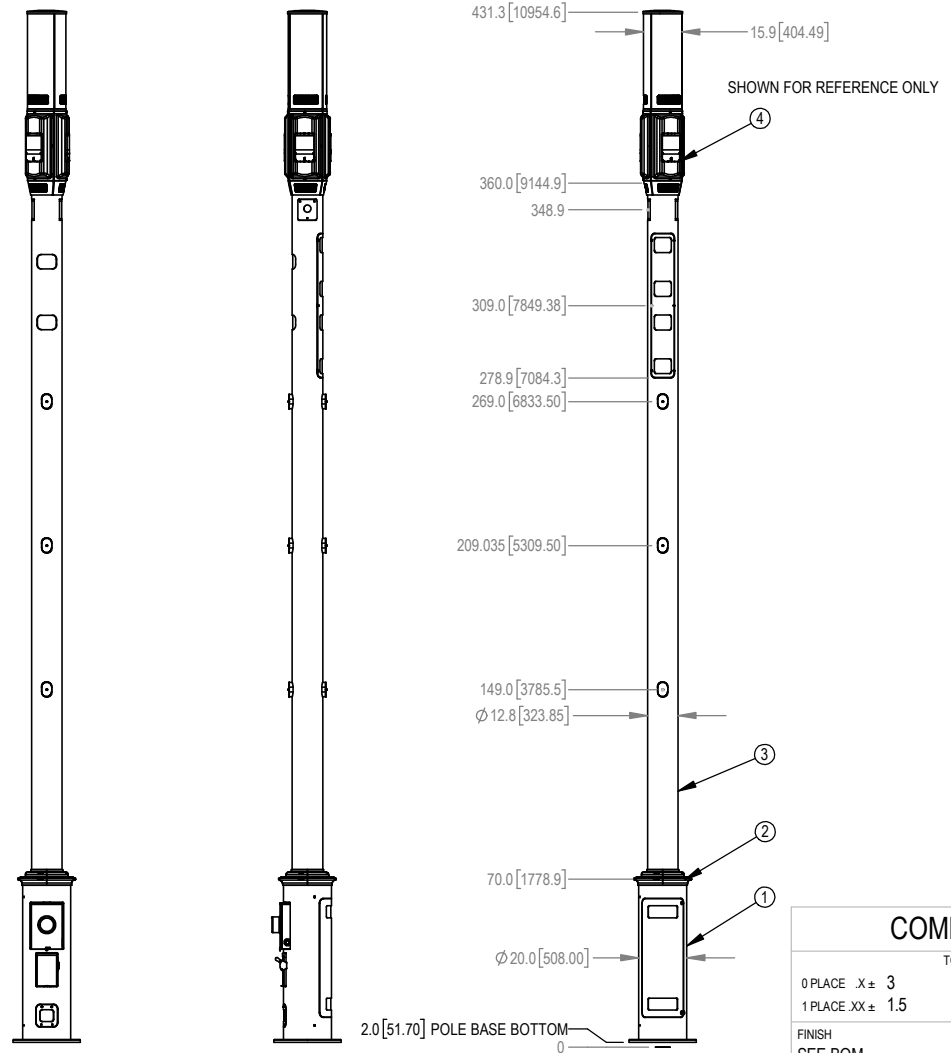


1. GENERAL NOTES  
 1.1 ALL METRIC DIMENSIONS ARE IN BRACKETS [X.X]  
 1.2 FEATURES CRITICAL TO QUALITY ARE INDICATED IN ROUNDED BOX

2. DESIGN NOTES  
 2.1 NOMINAL DESIGN 3-SEC GUST WIND SPEED: XXX MPH, WITH EQUIPMENT MOUNTED AS SHOWN, TOTAL HEIGHT XX FT ABOVE GROUND LEVEL  
 2.2 REFER TO STRUCTURAL REPORT FOR FOUNDATION AND INSTALLATION DETAILS  
 2.3. THE FINISHED ITEM IS A SERIES ASSEMBLY. REFER TO METROCELL DOCUMENT MTM1004 FOR SPECIFIC COLOR REQUIREMENTS

3. MANUFACTURING/SPECIAL REQUIREMENTS  
 4. TESTING  
 5. PACKAGING

| REVISIONS |       |                 |            |          |
|-----------|-------|-----------------|------------|----------|
| REV.      | ECN   | DESCRIPTION     | DATE       | APPROVED |
| A         | 10137 | INITIAL RELEASE | 05/17/2021 | RW1043   |



760250808UXx30X6

| ITEM NO. | PART NUMBER     | DESCRIPTION                               | Ux30X6QTY. | NOTES |
|----------|-----------------|---|------------|-------|
| 1        | mtm1130-1000-xx | F-ASSY, 20 X 68 PWR BASE INT-POLE SERIES  | 1          |       |
| 2        | MTM1130-1700-XX | KIT, TRANSITION PB20-12, RMR SERIES       | 1          |       |
| 3        | MTM1129-70YY-XX | ASSY RISER P, LUM 12.75" OD X 24.2 SERIES | 1          |       |
| 4        | REF ONLY        | ACCS,4G5G TRI,12",SPOOL                   | 1          |       |

|              |           |                     |
|--------------|-----------|---------------------|
| DENSITY      | 360       | lbs/in <sup>3</sup> |
| MASS         | 1862.939  | lbs                 |
| VOLUME       | 12221.524 | in <sup>3</sup>     |
| SURFACE AREA | 87139.204 | in <sup>2</sup>     |
| HEIGHT       | 360       |                     |
| LENGTH       | 23        |                     |
| WIDTH        | 23        |                     |

**COMMSCOPE, INC. OF NORTH CAROLINA**

TOLERANCES: 0 PLACE .X ± 3, 1 PLACE .XX ± 1.5, 3 PLACE .XXX ±, ANGLES ± 2.5

SAP MATERIAL MASTER: **760250808UXxYYX6**

FINISH: SEE BOM, MATERIAL: SEE BOM

|                       |                        |                                       |
|-----------------------|------------------------|---------------------------------------|
| NAME                  | DATE                   | TITLE                                 |
| CE                    |                        | <b>PB20S,NO-MNT,30',LUM, SERIES</b>   |
| RW                    |                        |                                       |
| AD                    |                        |                                       |
| RE                    |                        |                                       |
| ECN 10137PC           | SCALE: <b>1:1</b>      | DOCUMENT NO. <b>760250808UXXXYYX6</b> |
| SIZE: Auth Group INSL | MODEL: STATUS REVISION | DRAWING: STATUS REVISION              |
| <b>C</b>              | 00                     | 00 IW                                 |

SHEET 1 OF 1