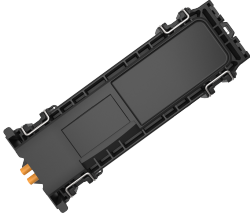


# SRC1-U3B2A1BB000



NOVUX™ Specialty Range Closure 50, splice/patch, 2x SC/APC adapter, 2x SC/APC Grade B 900µm pigtail, no splitters, 6 splices, SMOUV® 45mm splice protectors, black, no splitter, 2x NVX-CR-MC-FT-NN cable retention

- Modern drop solution offering providers the agility and flexibility to use it in last-mile fiber network applications, both above and below ground
- Protected from harsh conditions by CommScope's Octopus gel sealing technology
- Agnostic to connectivity technologies: splice, connector, field-installable connector for agility and flexibility
- Identification plate for either QR code or customer logo
- QR code and CommScope cTrak® app for one-click access to all product information

## Product Classification

<b>Regional Availability</b>	Asia   EMEA   Latin America
<b>Regional Availability Note</b>	Contact your local CommScope representative for specific availability
<b>Product Type</b>	Single-ended, rectangular fiber closure
<b>Product Brand</b>	NOVUX™
<b>Product Series</b>	SRC50

## General Specifications

<b>Cable Capacity, Drop</b>	2 Flat 8.0 x 4.5 mm (0.30 x 0.17 in)   2 Round 1.2–8.0 mm (0.05–0.31 in)
<b>Cable Ports Quantity, total</b>	2 multi-out ports (4 cables)
<b>Cable Sealing Type</b>	Compressed gel
<b>Cable Termination Attachments, quantity</b>	2
<b>Closure Sealing Type</b>	Hinged with latch
<b>Closure Style</b>	Single-ended
<b>Color</b>	Black
<b>Mounting</b>	Handhole   Pedestal   Wall/Pole Mount, mounting kit included
<b>Network Area Type</b>	Drop
<b>Port Type</b>	SC/APC   SC/APC
<b>Port, quantity</b>	2
<b>Splice Tray Included, quantity</b>	1
<b>Splice Tray Type Included</b>	6-way, heat shrink

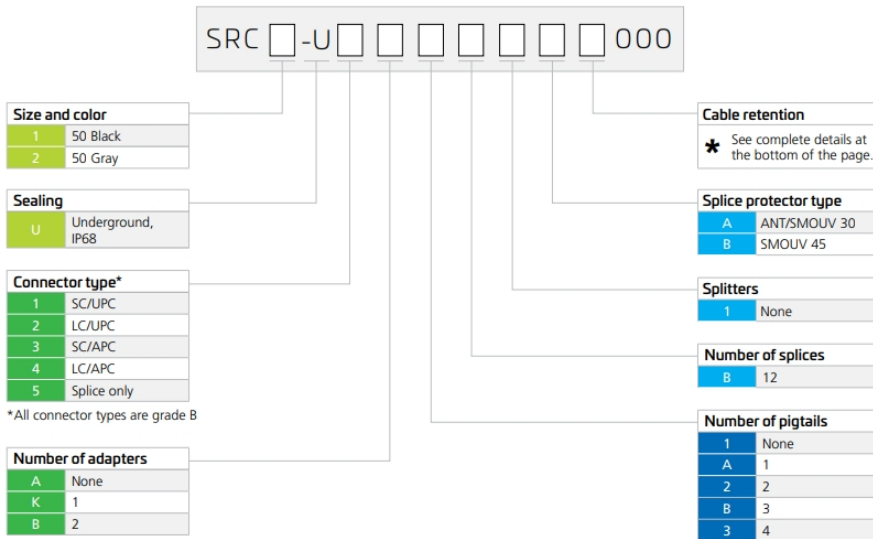
# SRC1-U3B2A1BB000

<b>Splicing Capacity, maximum</b>	6
<b>Splicing Capacity, Single Fusion, maximum</b>	6
<b>Splicing Type, Supported</b>	Single fusion
<b>Splitter Type</b>	No splitter
<b>Splitter, quantity</b>	0

## Dimensions

<b>Height</b>	267 mm   10.512 in
<b>Width</b>	87 mm   3.425 in
<b>Depth</b>	49 mm   1.929 in
<b>Cable Entry Drop Port Diameter</b>	8 mm (0.31 in) mm

## Ordering Tree



Cable retention <sup>a</sup>	Cable Termination Unit (CTU) options				
A None	<b>B</b>	<b>C</b>	<b>D</b>	<b>E</b>	<b>F</b>
B NVX-CR-MC-FT-NN					
C NVX-CR-MC-RD-NN	<b>NVX-CR-MC-FT-NN</b>	<b>NVX-CR-MC-RD-NN</b>	<b>NVX-CR-SA-SM-NN</b>	<b>NVX-CR-TI-SM-NN</b>	<b>NVX-CR-DU-FL-NN</b>
D NVX-CR-SA-SM-NN	<ul style="list-style-type: none"> <li>Flat cable</li> <li>Metal clip</li> <li>Range 3 x 5 to 4 x 8 mm</li> </ul>	<ul style="list-style-type: none"> <li>Round cable</li> <li>Metal clip</li> <li>Range 4 to 6.2 mm</li> </ul>	<ul style="list-style-type: none"> <li>Round cable</li> <li>Dia up to 8 mm</li> <li>Strength member</li> <li>Aramid yarns</li> <li>Single layer</li> </ul>	<ul style="list-style-type: none"> <li>Round cable</li> <li>Dia up to 8 mm</li> <li>Aramid yarns</li> <li>Single layer</li> </ul>	<ul style="list-style-type: none"> <li>Round cable</li> <li>Dia up to 6.2 mm</li> <li>Aramid yarns</li> <li>Dual layer</li> <li>Compact length</li> </ul>
E NVX-CR-TI-SM-NN	<sup>a</sup> 2 cable attachments are supplied.				
F NVX-CR-DU-FL-NN					

# SRC1-U3B2A1BB000

---

## Material Specifications

**Material Type** Impact-resistant polymer

## Optical Specifications

**Fiber Type** G.657.A1 | G.657.A2 | G.657.B3

## Environmental Specifications

**Operating Temperature** -40 °C to +70 °C (-40 °F to +158 °F)

**Environmental Space** Above ground | Below ground | Direct burial

**Qualification Standards** IEC 60529, IP68 + 2 m waterhead | IEC 61753-1, category G

**UV Resistance** UV stabilized

**Water Resistance** Flash test valve at 2 psi (20 kPa)

## Packaging and Weights

**Packaging quantity** 1

**Packaging Type** Box | Carton

## Regulatory Compliance/Certifications

### Agency

ISO 9001:2015

### Classification

Designed, manufactured and/or distributed under this quality management system



## Included Products

NVX-CR-MC-FT-NN – NOVUX™ Cable Termination Unit (CTU) for flat cables with 3x5 to 4x8 mm diameter, metal clip

# NVX-CR-MC-FT-NN

---



NOVUX™ Cable Termination Unit (CTU) for flat cables with 3x5 to 4x8 mm diameter, metal clip

## Product Classification

<b>Regional Availability</b>	Asia   EMEA   Latin America   North America
<b>Product Type</b>	Cable termination kit
<b>Product Brand</b>	NOVUX™
<b>Product Series</b>	CSC

## General Specifications

<b>Application</b>	For use with CSC Fiber closures
<b>Color</b>	Black

## Packaging and Weights

<b>Packaging quantity</b>	20
<b>Packaging Type</b>	Bag   Box

## Regulatory Compliance/Certifications

<b>Agency</b>	<b>Classification</b>
CHINA-ROHS	Below maximum concentration value
REACH-SVHC	Compliant as per SVHC revision on <a href="https://www.commscope.com/ProductCompliance">www.commscope.com/ProductCompliance</a>
ROHS	Compliant
UK-ROHS	Compliant

