

## Pulling Sock For FPM Assemblies

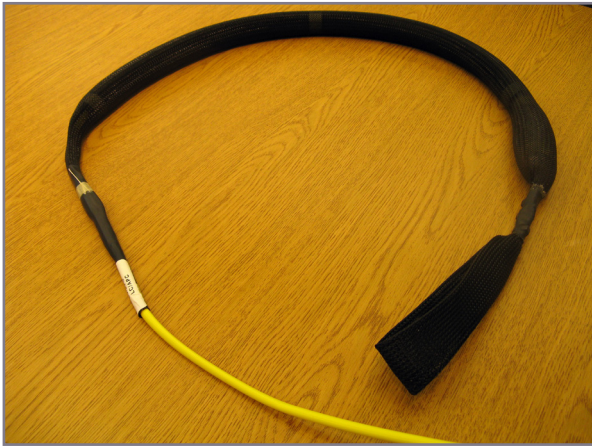
### Introduction

The FPM cable assembly is shipped with a black mesh pulling sock that is used for pulling the cable into position. After the cable is pulled into position, the pulling sock can be removed using this procedure.

1

#### Locate the pulling sock.

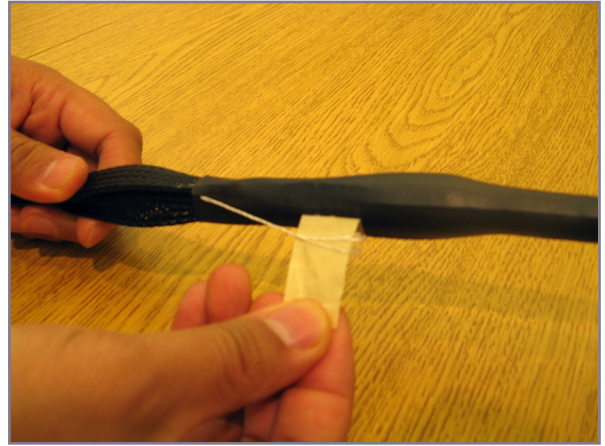
It is the obvious black object taped on the cable end. It has mesh outside and foam inside.



2

#### Remove the masking tape on the small end of the pulling sock.

Removing the tape reveals a rip cord.



3

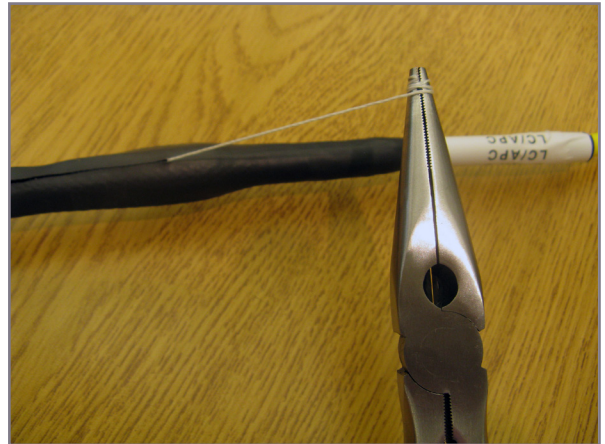
#### Using a needlenose pliers, take hold of the end of the rip cord and wind the rip cord around the tip of the pliers.



4

#### Pull out the rip cord to split the heat shrink along the path of the cord.

Pull straight through to make a straight path.

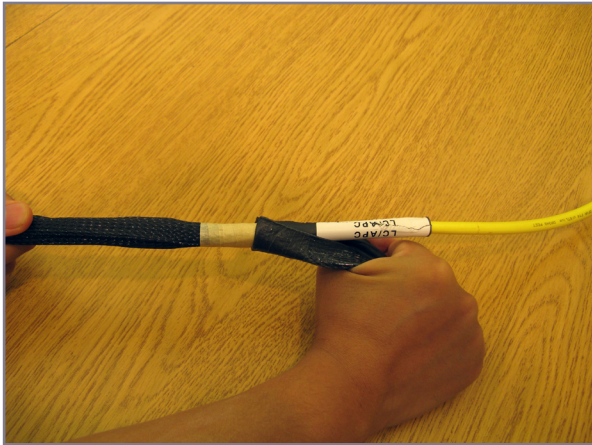




5

**Remove the heat shrink.**

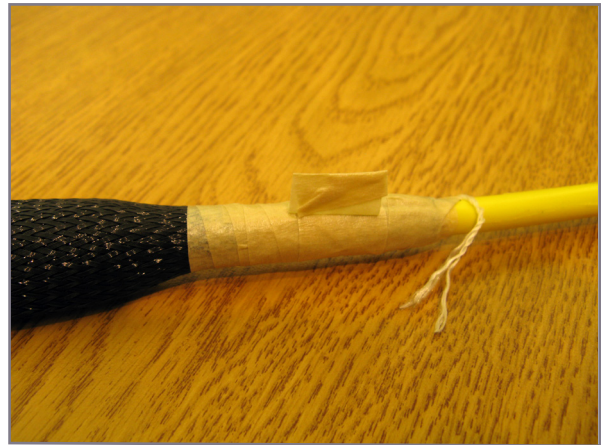
This will expose the transition between the yellow cable jacket and black pulling sock.



6

**Remove (unwrap) the masking tape at the exposed transition.**

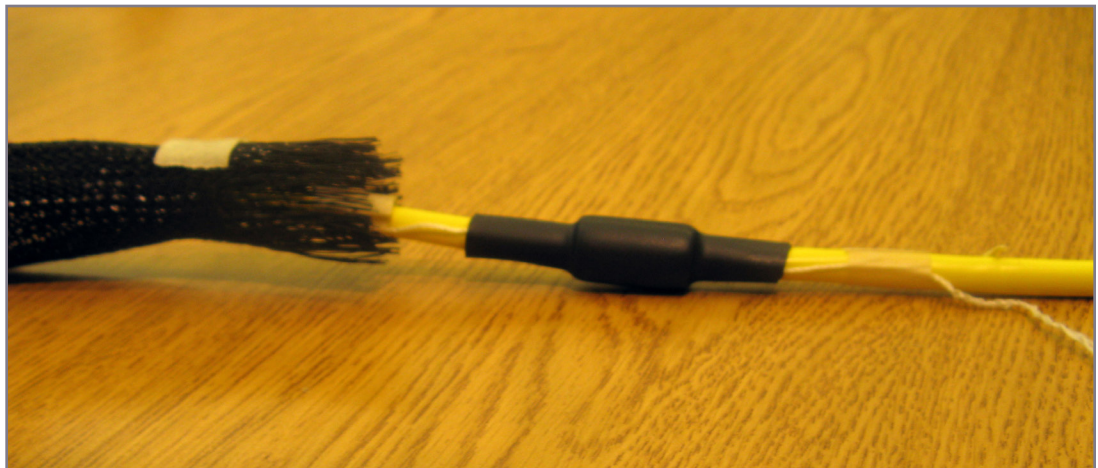
The end of the tape is shown pulled up from the cable jacket in the picture below.



7

**PUSH the mesh away from the heat shrink.**

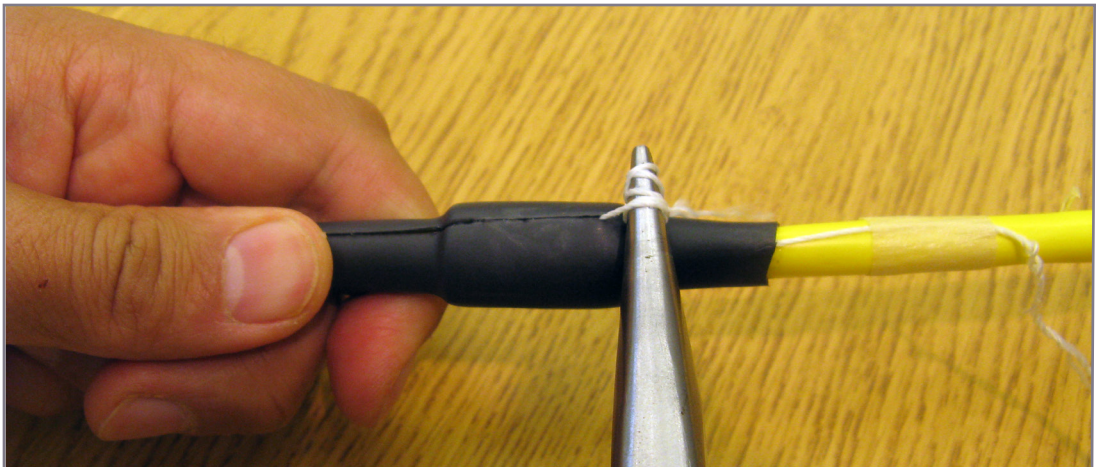
Push don't pull! Pulling the sock will cause the heat shrink to constrict and grab the sheath.



8

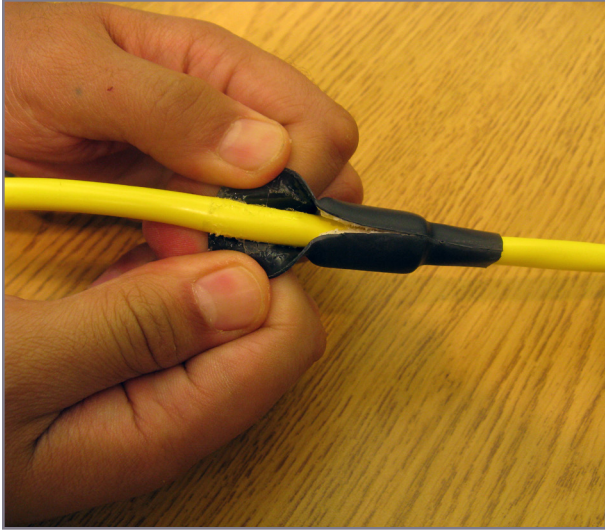
**Remove the inner rip cord to split the second layer of heat shrink.**

Use the needlenose pliers as before to wrap the cord around the tip and pull out the cord in a straight line.

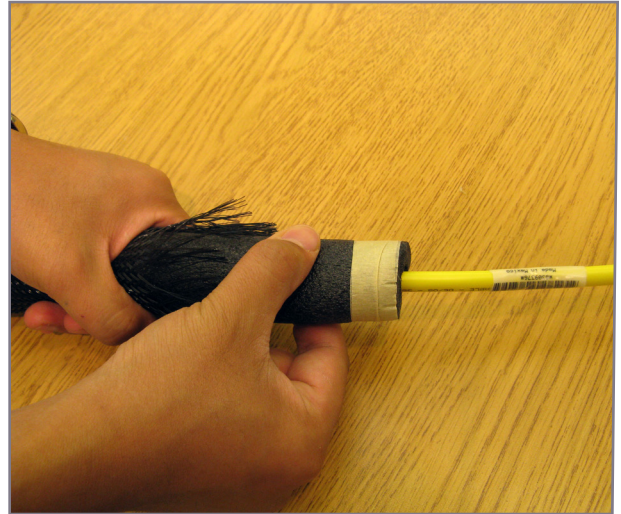




9

**Remove the inner heat shrink.**

10

**Remove the pulling sock all the way to the end of the cable.**

11

**Verify that the cable looks as shown below with the pulling sock removed.**

The remaining black object is the inner casing (foam tubing).

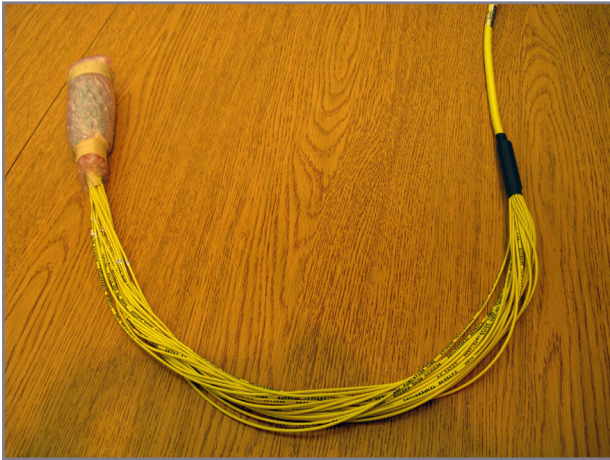


12

Using pull tabs, remove the masking tape holding the inner casing. Then, holding the fibers straight so as not to kink them, pull the fibers out of the inner casing.

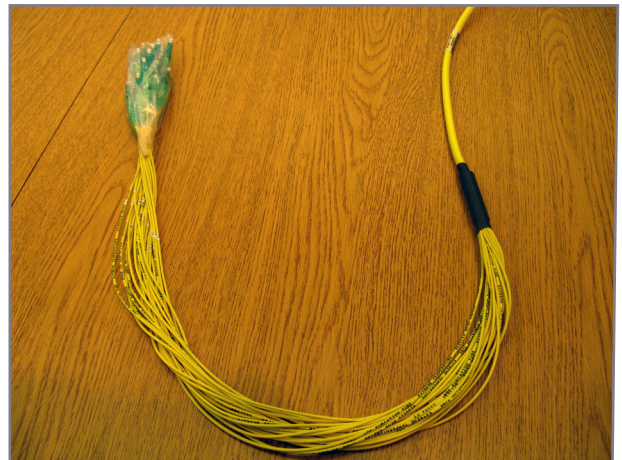
13

Gently remove the end packaging (bubble wrap), shown here at end of cable.



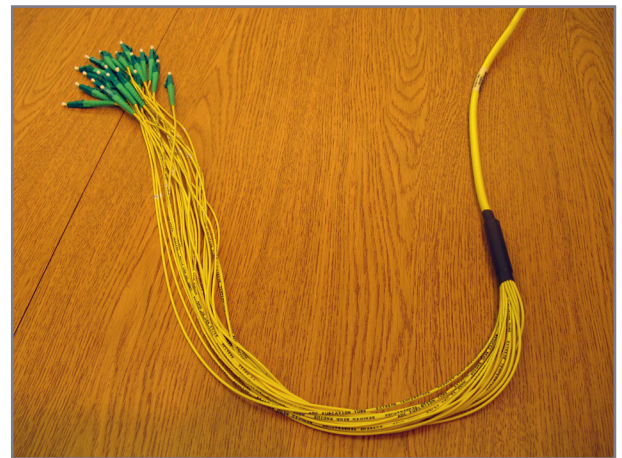
14

Remove the connectors from the plastic package, shown here at end of cable.



15

Verify that the final assembly looks as shown below.



**COMMSCOPE®**

**Product Information**

<http://www.commscope.com>

**Product Support**

<http://www.commscope.com/SupportCenter>

**Product Patents**

<http://www.cs-pat.com>