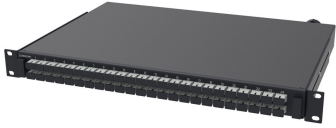


760249186



Fiber Optic Termination/Splice Panel, 1U, 19 in, 48 SC simplex adapter, multimode, black

Product Classification

Regional Availability	Asia Australia/New Zealand China India
Portfolio	CommScope®
Product Type	Fiber patch/splice panel

General Specifications

Functionality	Patching Splicing
Body Style	Symmetrical
Cable Exit Location	Rear
Color	Black
Growth Configuration	Fully loaded
Interface, front	SC/UPC
Rack Type	EIA 19 in
Rack Units	1
Shelf Movement	Sliding
Splice Trays Included, quantity	0
Total Ports, quantity	48

Dimensions

Height	44.45 mm 1.75 in
Width	482.6 mm 19 in
Depth	320 mm 12.598 in

Material Specifications

Finish	Powder coated
Material Type	Steel

Optical Specifications

760249186

Fiber Mode Multimode

Packaging and Weights

Included Mounting hardware

Packaging quantity 1