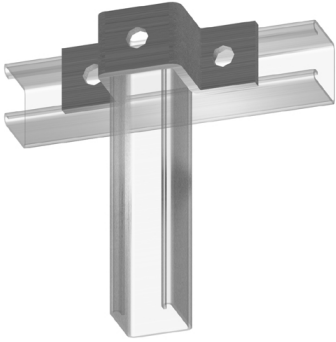


# MT-499

---



1-5/8 in U-fitting, 3/8 in, three-hole

- This item is now available as a custom product and is made to order

**OBSOLETE**

## Product Classification

**Product Type** Square rail support component

## General Specifications

**Mounting** Square support rail

## Dimensions

**Height** 50.8 mm | 2 in

**Width** 152.4 mm | 6 in

**Length** 76.2 mm | 3 in

**Inner Diameter** 10.16 mm | 0.4 in

## Material Specifications

**Material Type** Hot dip galvanized steel

## Packaging and Weights

**Included** Splice

**Packaging quantity** 1

**Weight, net** 0.3 kg | 0.661 lb