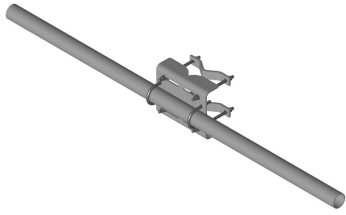


MD-SS-8R



Tower Leg Mounted Microwave Antenna Channel Support Kit, 96 in, includes pipe

Product Classification

Product Type Microwave strut support

General Specifications

Mounting Straight or tapered legs up to 203.2 mm (8 in) OD

Pipe, quantity 1

Tower Taper Non-tapered | Tapered

Dimensions

Height 152.4 mm | 6 in

Width 2,438.4 mm | 96 in

Length 304.8 mm | 12 in

Pipe Length 2,438.4 mm | 96 in

Mounting Diameter, maximum 203.2 mm | 8 in

Pipe Outer Diameter 88.9 mm | 3.5 in

Material Specifications

Material Type Hot dip galvanized steel

Mechanical Specifications

Wind Rating For Specifications, please contact steelproducts@commscope.com or call 800-255-1479

Packaging and Weights

Included Attachment hardware | Clamps | Pipes

Packaging quantity 1

MD-SS-8R

Weight, net 47.6 kg | 104.94 lb

Regulatory Compliance/Certifications

Agency

ISO 9001:2015



Classification

Designed, manufactured and/or distributed under this quality management system

* Footnotes

Wind Rating

BWS—Base Wind Speed; FBC—Florida Building Code