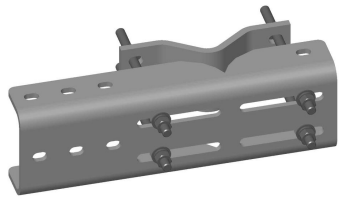


MD-CS-B



Face Mounted Microwave Strut Support for up to 3-1/2 in face pipes

Product Classification

Product Type Microwave strut support

General Specifications

Mounting Straight or tapered legs up to 203.2 mm (8 in) OD

Pipe, quantity 0

Tower Taper Non-tapered | Tapered

Dimensions

Height 152.4 mm | 6 in

Width 304.8 mm | 12 in

Length 203.2 mm | 8 in

Mounting Diameter, maximum 203.2 mm | 8 in

Material Specifications

Material Type Hot dip galvanized steel

Mechanical Specifications

Wind Rating For Specifications, please contact steelproducts@commscope.com or call 800-255-1479

Packaging and Weights

Included Attachment hardware | Clamps

Packaging quantity 1

Weight, net 24.5 kg | 54.013 lb

Regulatory Compliance/Certifications

MD-CS-B

Agency

CHINA-ROHS

ISO 9001:2015

REACH-SVHC

ROHS

UK-ROHS



Classification

Below maximum concentration value

Designed, manufactured and/or distributed under this quality management system

Compliant as per SVHC revision on www.commscope.com/ProductCompliance

Compliant

Compliant

* Footnotes

Wind Rating

BWS—Base Wind Speed; FBC—Florida Building Code