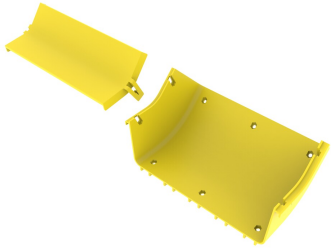


# FGS-MU4E-F

---



FiberGuide® 45° Up Elbow, 4x12in, Yellow

## Product Classification

|                              |   |
|------------------------------|---|
| <b>Regional Availability</b> | Asia   Australia/New Zealand   EMEA   Latin America   North America |
| <b>Portfolio</b>             | CommScope®  |
| <b>Product Type</b>          | Elbow   |
| <b>Product Brand</b>         | FiberGuide®   |
| <b>Product Series</b>        | FGS   |

## General Specifications

|                             |               |
|-----------------------------|---------------|
| <b>Angle/Bend Direction</b> | 45° up        |
| <b>Color</b>                | Yellow        |
| <b>Orientation</b>          | Horizontal    |
| <b>Section Type</b>         | Elbow section |

## Dimensions

|                          |                                |
|--------------------------|--------------------------------|
| <b>System Dimensions</b> | 102 mm x 305 mm (4 in x 12 in) |
|--------------------------|--------------------------------|

## Ordering Tree

# FGS-MU4E-F



## Section Color

|   |       |        |
|---|-------|--------|
| 9 | empty | yellow |
|   | B     | black  |

## Section Size

|    |   |           |
|----|---|-----------|
| 10 | A | 4 x 4 in  |
|    | B | 4 x 6 in  |
|    | C | 2 x 2 in* |
|    | F | 4 x 12 in |
|    | G | 2 x 6 in  |
|    | H | 4 x 24 in |

\* FGS-MU4A-C or FGSB-MU4A-C

## Material Specifications

**Material Type** Engineering Thermoplastic

## Environmental Specifications

**Flammability Rating** CSA S143 | UL 2024 | UL 94 V-0

**Halogen Characteristics** Blue Angel | TCO '99 | WEEE

**Safety Standard** CSA | UL

## Packaging and Weights

**Weight, net** 1.025 kg | 2.26 lb

## Regulatory Compliance/Certifications

### Agency

CHINA-ROHS

REACH-SVHC

ROHS

UK-ROHS

### Classification

Below maximum concentration value

Compliant as per SVHC revision on [www.commscope.com/ProductCompliance](https://www.commscope.com/ProductCompliance)

Compliant

Compliant

