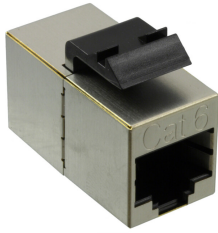


2111124-1 | SL-CPLR-STP-6



SL-Series Coupler, RJ45, Cat6 Shielded, Silver

Product Classification

Regional Availability	Asia Australia/New Zealand EMEA Latin America North America
Portfolio	NETCONNECT®
Product Type	Modular jack coupler
Product Series	SL Series

General Specifications

ANSI/TIA Category	6
Cable Type	Shielded
Color	Silver
Conductor Type	Solid Stranded
Integrated Dust Cover Type	None
Outlet Type	Inline
Termination Tool	SL Termination tool
Termination Type	IDC
Transmission Standards	ANSI/TIA-568-C.2 ISO/IEC 11801 Class E
Wiring	T568A T568B

Dimensions

Panel Cutout, recommended	14.78 x 20.07 mm (0.58 x 0.79 in)
Panel Thickness, recommended	1.6 mm 0.063 in
Height	20.62 mm 0.812 in
Width	14.6 mm 0.575 in
Depth	30 mm 1.181 in
Contact Plating Thickness	1.27 µm

Electrical Specifications

Contact Resistance, maximum	20 mOhm
------------------------------------	---------

Insulation Resistance, minimum	500 MOhm
Safety Voltage Rating	150 Vac

Material Specifications

Contact Base Material	Phosphor Bronze
Contact Plating Material	Gold
Material Type	Polycarbonate

Mechanical Specifications

Plug Insertion Life, minimum	750 times
-------------------------------------	-----------

Environmental Specifications

Operating Temperature	-10 °C to +60 °C (+14 °F to +140 °F)
Relative Humidity	Up to 90%, non-condensing
Flammability Rating	UL 94 V-0

Packaging and Weights

Packaging quantity	1
Packaging Type	Bag

Regulatory Compliance/Certifications

Agency	Classification
CHINA-ROHS	Below maximum concentration value
REACH-SVHC	Compliant as per SVHC revision on www.commscope.com/ProductCompliance
ROHS	Compliant
UK-ROHS	Compliant

