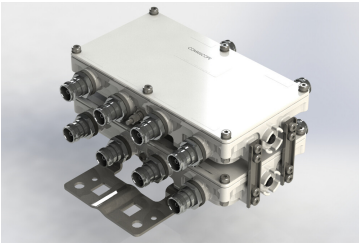


E14F06P46



Ultra Compact Quad Diplexer, 3400–3600/3700–4100 MHz, DC/AISG Bypass on low frequency port, with 4.3-10 connectors

- Industry leading PIM performance
- New 4.3-10 connectors for improved PIM performance and size reduction
- dc/AISG blocking on all ports
- New Combining Solution to introduce 5G, 3.5GHz band
- Compact form factor with reduced size and weight

Product Classification

Product Type Diplexer

General Specifications

Color Gray

Modularity 2-Twin

Mounting Pole | Wall

Mounting Pipe Hardware Band clamps (2)

RF Connector Interface 4.3-10 Female

Dimensions

Height 92 mm | 3.622 in

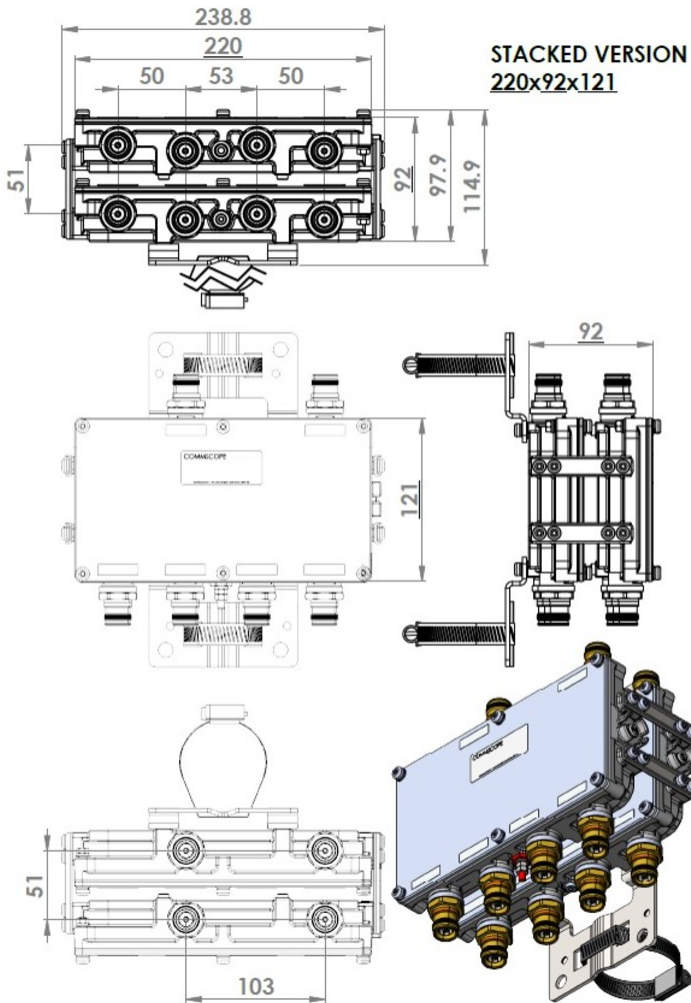
Width 220 mm | 8.661 in

Depth 121 mm | 4.764 in

Mounting Pipe Diameter Range 42.6–122 mm

Outline Drawing

E14F06P46



Electrical Specifications

Impedance 50 ohm

Electrical Specifications, dc Power/Alarm

dc/AISG Pass-through Path Branch 1

dc/AISG Pass-through, combiner Branch 1

dc/AISG Pass-through, demultiplexer Branch 1

Electrical Specifications

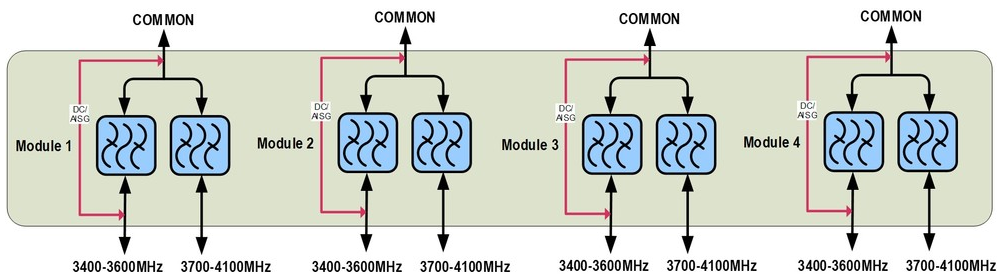
Sub-module	1 2	1 2
Branch	1	2
Port Designation	PORT 1 3400-3600	PORT 2 3700-4100

E14F06P46

Electrical Specifications, Band Pass

Frequency Range, MHz	3400–3600	3700–4100
Insertion Loss, typical, dB	0.4	0.4
Return Loss, typical, dB	20	20
Isolation, typical, dB	35	35
Input Power, RMS, maximum, W	100	100
Input Power, PEP, maximum, W	1000	1000
3rd Order PIM, maximum, dBc	-150	-150
3rd Order PIM Test Method	Two +43 dBm carriers	Two +43 dBm carriers

Block Diagram



Environmental Specifications

Operating Temperature	-40 °C to +65 °C (-40 °F to +149 °F)
Corrosion Test Method	IEC 60068-2-11, 30 days
Environmental Test Method	ETSI EN 300 019-1-4
Ingress Protection Test Method	IEC 60529:2001, IP67

Packaging and Weights

Included	Mounting hardware
Volume	2.45 L
Weight, net	4.8 kg 10.582 lb
Weight, without mounting hardware	4.5 kg 9.921 lb