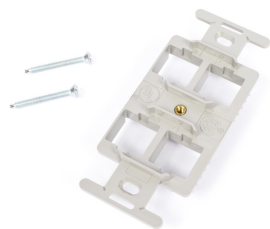


106688385 | M106FR4-270



M106 Flush Mounted Modular Mounting Frame, four port gray

Product Classification

| | |
|------------------------------|---|
| Regional Availability | Asia Australia/New Zealand EMEA Latin America North America |
| Portfolio | CommScope® |
| Product Type | Mounting kit |

General Specifications

| | |
|------------------------------|---|
| Application | Used with M Series modular information outlet |
| Color | Gray |
| Mounting | Flush |
| Total Ports, quantity | 4 |

Dimensions

| | |
|---------------|--------------------|
| Height | 104.14 mm 4.1 in |
| Width | 44.45 mm 1.75 in |
| Depth | 12.7 mm 0.5 in |

Material Specifications

| | |
|----------------------|---|
| Material Type | High-impact, flame retardant, thermoplastic |
|----------------------|---|

Environmental Specifications

| | |
|----------------------------|-----------|
| Flammability Rating | UL 94 V-0 |
| Safety Standard | UL cUL |

Packaging and Weights

| | |
|---------------------------|--------------------|
| Packaging quantity | 1 |
| Weight, net | 0.023 kg 0.05 lb |

Regulatory Compliance/Certifications

Agency

CHINA-ROHS
ISO 9001:2015
REACH-SVHC
ROHS
UK-ROHS

Classification

Below maximum concentration value
Designed, manufactured and/or distributed under this quality management system
Compliant as per SVHC revision on www.commscope.com/ProductCompliance
Compliant
Compliant

