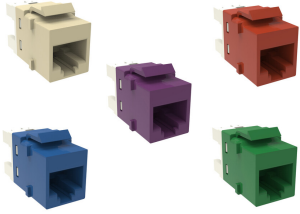


Base Product



SL-Series Modular Jack High Density, RJ45, Cat6 Unshielded

Product Classification

Regional Availability	Asia Latin America North America
Portfolio	NETCONNECT®
Product Type	Modular jack
Product Series	SL Series

General Specifications

ANSI/TIA Category	6
Application	Used in UDDM-SL-1U-48 type panels only
Cable Type	Unshielded
Conductor Type	Solid Stranded
Outlet Feature	Inverted jack face
Outlet Type	Standard
Termination Tool	SL Termination tool
Termination Type	IDC
Transmission Standards	ANSI/TIA-568-C.2 ISO/IEC 11801 Class E
Wiring	T568A T568B

Dimensions

Panel Thickness, recommended	1.6 mm 0.063 in
Height	16.26 mm 0.64 in
Width	14.48 mm 0.57 in
Depth	30.48 mm 1.2 in
Compatible Insulated Conductor Diameter, maximum	1.45 mm 0.057 in
Contact Plating Thickness	1.27 µm
Compatible Conductor Gauge, solid	24–22 AWG

1499925

Compatible Conductor Gauge, stranded

26–24 AWG

Electrical Specifications

PoE Durability

Supports IEEE 802.3bt Type 4 (90 W) applications after 3000 plug to jack mating cycles

Material Specifications

Contact Base Material

Beryllium copper

Contact Plating Material

Gold

Material Type

Polycarbonate

Environmental Specifications

Flammability Rating

UL 94 V-0