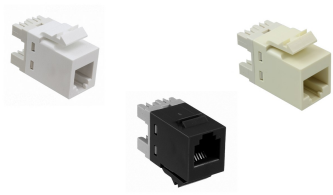


# 1375192



SL110 Series Modular Jack, 8-position, RJ11, category 3, unshielded, without dust cover

## Product Classification

|                              |   |
|------------------------------|---|
| <b>Regional Availability</b> | Asia   Australia/New Zealand   EMEA   Latin America   North America |
| <b>Portfolio</b>             | CommScope®  |
| <b>Product Type</b>          | Modular jack  |
| <b>Product Series</b>        | SL Series   |

## General Specifications

|                               |  |
|-------------------------------|--|
| <b>ANSI/TIA Category</b>      | 3  |
| <b>Cable Type</b>             | Unshielded                               |
| <b>Conductor Type</b>         | Solid   Stranded                         |
| <b>Mounting</b>               | SL Series faceplates and panels          |
| <b>Outlet Type</b>            | Standard                                 |
| <b>Termination Tool</b>       | SL Termination tool                      |
| <b>Termination Type</b>       | IDC                                      |
| <b>Transmission Standards</b> | ANSI/TIA-568-C.2   ISO/IEC 11801 Class C |
| <b>Wiring</b>                 | T568A   T568B                            |

## Dimensions

|   |                                   |
|---|-----------------------------------|
| <b>Panel Cutout, recommended</b>                        | 14.78 x 20.07 mm (0.58 x 0.79 in) |
| <b>Panel Thickness, recommended</b>                     | 1.6 mm   0.063 in                 |
| <b>Height</b>   | 16.26 mm   0.64 in                |
| <b>Width</b>  | 14.48 mm   0.57 in                |
| <b>Depth</b>  | 30.48 mm   1.2 in                 |
| <b>Compatible Cable Diameter, maximum</b>               | 5.8 mm   0.228 in                 |
| <b>Compatible Insulated Conductor Diameter, maximum</b> | 1.45 mm   0.057 in                |
| <b>Contact Plating Thickness</b>                        | 1.27 µm                           |
| <b>Compatible Conductor Gauge, solid</b>                | 24–22 AWG                         |

# 1375192

---

**Compatible Conductor Gauge, stranded** 26–24 AWG

## Electrical Specifications

**Current Rating, maximum** 0.75 A

**PoE Durability** Supports IEEE 802.3bt Type 4 (90 W) applications after 3000 plug to jack mating cycles

**Safety Voltage Rating** 150 Vac

## Material Specifications

**Contact Base Material** Beryllium copper

**Contact Plating Material** Gold

**Material Type** Polycarbonate

## Environmental Specifications

**Operating Temperature** -10 °C to +60 °C (+14 °F to +140 °F)

**Flammability Rating** UL 94 V-0