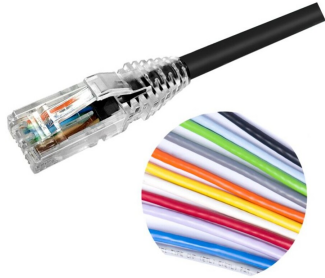


KC1BBB2

Base Product



Uniprise Category 6 U/UTP Patch Cord, RJ45 to RJ45, 4-pair, Non-Plenum (Megapack of 100)

Product Classification

Regional Availability	North America
Portfolio	Uniprise®
Product Type	Twisted pair patch cord
Product Series	KC
Ordering Note	Cords < 1 m are valid elements for use in a channel or as an equipment interconnect but due to their limited length are not guaranteed to meet component compliance requirements that were developed to assess the quality of longer cords Cords > 1 m are authorized for use in channels and are an effective standalone method used to connect active devices

General Specifications

ANSI/TIA Category	6
Cable Type	U/UTP (unshielded)
Conductor Type	Stranded
Interface, Connector A	RJ45 plug
Interface Feature, connector A	Standard
Interface, Connector B	RJ45 plug
Interface Feature, connector B	Standard
Jacket Color	Black Blue Green Orange Purple Red Slate Violet White Yellow
Pairs, quantity	4
Transmission Standards	IEEE 802.3bt Type 4
Wiring	T568B

Dimensions

Cable Assembly Length Range (m)	1 – 2
Cable Assembly Length Range (ft)	1 – 7

KC1BBB2

Cable Assembly Length Range (cm)	15 – 200
Cable Assembly Length Range (in)	6 – 84
Diameter Over Jacket	5.97 mm 0.235 in
Compatible Conductor Gauge, stranded	24 AWG

Wiring Diagram

	Connector A	Connector B
Position 1	White/Orange	White/Orange
Position 2	Orange	Orange
Position 3	Lt. Green	Lt. Green
Position 4	Blue	Blue
Position 5	Lt. Blue	Lt. Blue
Position 6	Green	Green
Position 7	Lt. Brown	Lt. Brown
Position 8	Brown	Brown

Electrical Specifications

dc Resistance, maximum	0.3 ohm
Safety Voltage Rating	300 V

Ordering Tree

KC1BBB2

KC - ⁹ ¹⁰ ¹¹ ¹²

Outlet Color

9	0	Not applicable
	1	Black
	2	Blue
	3	Gray
	4	Green
	5	Ivory
	6	Orange
	7	Red
	8	White
	9	Yellow
	B	Lilac

Jacket Color

10	1	Black
	2	Light blue
	3	Dark gray
	4	Spring green
	5	Ivory
	6	Orange
	7	Red
	8	White
	9	Yellow
	B	Lilac
	C	Gray
	K	Pink
	L	Violet
	M	Green
	Z	Blue

UOM

11	F	Foot
	M	Meter
	N	Inch

Length

12	XXX
----	-----

Notes

- Cords > 1m are authorized for use in channels and are an effective standalone method used to connect active devices
- Cords < 1m are also valid elements for use in a channel or as an equipment interconnect but due to their limited length are not guaranteed to meet component compliance requirements that were developed to assess the quality of longer cords

Material Specifications

Contact Plating Material

Precious metals

Material Type

Copper alloy | Polycarbonate

Mechanical Specifications

Plug Insertion Life, minimum

750 times

Plug Retention Force, minimum

133 N | 29.9 lbf

Environmental Specifications

Operating Temperature

-10 °C to +60 °C (+14 °F to +140 °F)

Environmental Space

Non-plenum

Flammability Rating

UL 94 V-0

Safety Standard

ETL | cETL

Packaging and Weights

Packaging quantity

100

Regulatory Compliance/Certifications

Agency

ISO 9001:2015

Classification

Designed, manufactured and/or distributed under this quality management system