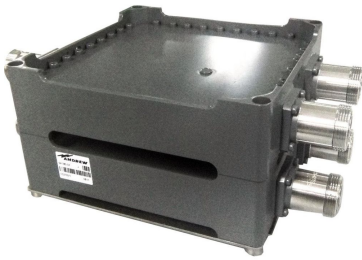


# 641280-DF-9-DCB-2X



Twin Crossband Coupler, Cellular/900 MHz/DCS 1800/PCS/AWS

## OBSOLETE

This product was discontinued on: December 1, 2019

## Product Classification

**Product Type** Coupler

## General Specifications

**Product Family** 641280

**Color** Gray

**Common Port Label** COMMON

**Modularity** 2-Twin

**Mounting** Pole | Wall

**Mounting Pipe Hardware** Band clamps (2)

**RF Connector Interface** 7-16 DIN Female

**RF Connector Interface Body Style** Long neck

## Dimensions

**Height** 186 mm | 7.323 in

**Width** 186 mm | 7.323 in

**Depth** 100 mm | 3.937 in

**Ground Screw Diameter** 8 mm | 0.315 in

**Mounting Pipe Diameter Range** 40–160 mm

## Electrical Specifications

**Impedance** 50 ohm

# 641280-DF-9-DCB-2X

**License Band, Band Pass** AWS 1700 | CEL 850 | CEL 900 | DCS 1800 | IMT 2100 | LMR 800 | LMR 900 | PCS 1900 | TDD 1900

## Electrical Specifications, Common Port

**Composite Power, PEP** 12000 W

## Electrical Specifications, dc Power/Alarm

**dc/AISG Pass-through, combiner** Branch 2

**dc/AISG Pass-through, demultiplexer** Branch 2

**Lightning Surge Current** 15 kA

**Lightning Surge Current Waveform** 8/20 waveform

## Electrical Specifications

Sub-module	1   2	1   2	1   2
<b>Branch</b>	1	2	2
<b>Port Designation</b>	LOW BAND	HIGH BAND	HIGH BAND
<b>License Band</b>	CEL 850, Band Pass CEL 900, Band Pass LMR 800, Band Pass LMR 900, Band Pass	AWS 1700, Band Pass DCS 1800, Band Pass IMT 2100, Band Pass PCS 1900, Band Pass TDD 1900, Band Pass	AWS 1700, Band Pass IMT 2100, Band Pass

## Electrical Specifications, Band Pass

<b>Frequency Range, MHz</b>	<b>806–960</b>	<b>1710–2160</b>	<b>2160–2170</b>
<b>Insertion Loss, maximum, dB</b>	0.15	0.2	0.2
<b>Return Loss, minimum, dB</b>	20	20	16
<b>Isolation, minimum, dB</b>	47	47	47
<b>Input Power, RMS, maximum, W</b>	500	275	275
<b>Input Power, PEP, maximum, W</b>	12000	6000	6000
<b>3rd Order PIM, maximum, dBc</b>		-153	
<b>3rd Order PIM, typical, dBc</b>	-153	-153	-153
<b>3rd Order PIM Test Method</b>	2 x 20 W CW tones	2 x 20 W CW tones	2 x 20 W CW tones

## Environmental Specifications

**Operating Temperature** -40 °C to +65 °C (-40 °F to +149 °F)

**Relative Humidity** Up to 100%

**Corrosion Test Method** IEC 60068-2-11, 30 days

**Ingress Protection Test Method** IEC 60529:2001, IP68

# 641280-DF-9-DCB-2X

---

## Packaging and Weights

<b>Included</b>	Mounting hardware
<b>Volume</b>	3.4 L
<b>Weight, net</b>	5 kg   11.023 lb

## Regulatory Compliance/Certifications

<b>Agency</b>	<b>Classification</b>
ISO 9001:2015	Designed, manufactured and/or distributed under this quality management system

