

# FFVV-65A-R2-V1



8-port sector antenna, 4x 617-894 and 4x 1695-2690 MHz, 65° HPBW, 2x RET

- Meets -153dBc 3rd order PIM for 1695-2690MHz, using 2x40W carriers

## General Specifications

<b>Antenna Type</b>	Sector
<b>Band</b>	Multiband
<b>Color</b>	Light Gray (RAL 7035)
<b>Grounding Type</b>	RF connector inner conductor and body grounded to reflector and mounting bracket
<b>Performance Note</b>	Outdoor usage
<b>Radiator Material</b>	Aluminum   Low loss circuit board
<b>RF Connector Interface</b>	4.3-10 Female
<b>RF Connector Location</b>	Bottom
<b>RF Connector Quantity, high band</b>	4
<b>RF Connector Quantity, low band</b>	4
<b>RF Connector Quantity, total</b>	8

## Remote Electrical Tilt (RET) Information

<b>RET Interface</b>	8-pin DIN Female   8-pin DIN Male
<b>RET Interface, quantity</b>	1 female   1 male
<b>Input Voltage</b>	10-30 Vdc
<b>Internal RET</b>	High band (1)   Low band (1)
<b>Power Consumption, idle state, maximum</b>	1 W
<b>Power Consumption, normal conditions, maximum</b>	8 W
<b>Protocol</b>	3GPP/AISG 2.0 (Single RET)

## Dimensions

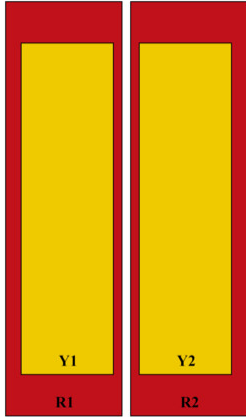
<b>Width</b>	640 mm   25.197 in
<b>Depth</b>	235 mm   9.252 in
<b>Length</b>	1224 mm   48.189 in

# FFVV-65A-R2-V1

Net Weight, without mounting kit

33.2 kg | 73.193 lb

## Array Layout



Array ID	Frequency (MHz)	RF Connector	RET (SRET)	AISG RET UID
R1	617-894	1 - 2	1	CPxxxxxxxxxxxxxxxxR1
R2	617-894	3 - 4		
Y1	1695-2690	5 - 6	2	CPxxxxxxxxxxxxxxxxY1
Y2	1695-2690	7 - 8		

(Sizes of colored boxes are not true depictions of array sizes)

## Port Configuration



## Electrical Specifications

**Impedance**

50 ohm

**Operating Frequency Band**

1695 – 2690 MHz | 617 – 894 MHz

**Polarization**

±45°

# FFVV-65A-R2-V1

Total Input Power, maximum

900 W @ 50 °C

## Electrical Specifications

Frequency Band, MHz	617–698	698–806	806–894	1695–1880	1850–1990	1920–2200	2300–2500	2500–2690
Gain, dBi	12.6	13	13.2	16.3	16.7	17.4	17.6	18
Beamwidth, Horizontal, degrees	66	65	58	66	67	63	57	60
Beamwidth, Vertical, degrees	21.7	19	16.6	7.7	7.3	6.7	5.8	5.7
Beam Tilt, degrees	5–22	5–22	5–18	2–12	2–12	2–12	2–12	2–12
USLS (First Lobe), dB	17	17	14	17	19	18	18	19
Front-to-Back Ratio at 180°, dB	27	31	30	34	35	35	34	33
Isolation, Cross Polarization, dB	25	25	25	25	25	25	25	25
Isolation, Inter-band, dB	25	25	25	25	25	25	25	25
VSWR   Return loss, dB	1.5 14.0	1.5 14.0	1.5 14.0	1.5 14.0	1.5 14.0	1.5 14.0	1.5 14.0	1.5 14.0
PIM, 3rd Order, 2 x 20 W, dBc	-150	-153	-153					
PIM, 3rd Order, 2 x 40 W, dBc				-153	-153	-153	-153	-153
Input Power per Port at 50°C, maximum, watts	250	250	250	200	200	200	200	200

## Electrical Specifications, BASTA

Frequency Band, MHz	617–698	698–806	806–894	1695–1880	1850–1990	1920–2200	2300–2500	2500–2690
Gain by all Beam Tilts, average, dBi	12.2	12.5	12.6	15.8	16.4	17	17.3	17.6
Gain by all Beam Tilts Tolerance, dB	±0.8	±0.8	±0.8	±0.6	±0.4	±0.7	±0.5	±0.6
Beamwidth, Horizontal Tolerance, degrees	±5.3	±6.1	±5.2	±3.9	±3.4	±8.4	±7.2	±8.1
Beamwidth, Vertical Tolerance, degrees	±2	±1.3	±1.1	±0.4	±0.4	±0.6	±0.5	±0.5
USLS, beampeak to 20° above beampeak, dB				13	16	16	15	16
Front-to-Back Total Power at 180° ± 30°, dB	20	21	21	26	28	28	26	26
CPR at Boresight, dB	15	16	16	16	23	19	16	19
CPR at Sector, dB	7	9	7	7	9	5	6	7

## Mechanical Specifications

# FFVV-65A-R2-V1

---

<b>Mechanical Tilt Range</b>	0°–15°
<b>Wind Loading @ Velocity, frontal</b>	505.0 N @ 150 km/h (113.5 lbf @ 150 km/h)
<b>Wind Loading @ Velocity, lateral</b>	156.0 N @ 150 km/h (35.1 lbf @ 150 km/h)
<b>Wind Loading @ Velocity, rear</b>	520.0 N @ 150 km/h (116.9 lbf @ 150 km/h)
<b>Wind Speed, maximum</b>	241 km/h (150 mph)

## Packaging and Weights

<b>Width, packed</b>	752 mm   29.606 in
<b>Depth, packed</b>	387 mm   15.236 in
<b>Length, packed</b>	1379 mm   54.291 in
<b>Weight, gross</b>	47.6 kg   104.94 lb

## Regulatory Compliance/Certifications

<b>Agency</b>	<b>Classification</b>
CHINA-ROHS	Below maximum concentration value
ISO 9001:2015	Designed, manufactured and/or distributed under this quality management system
REACH-SVHC	Compliant as per SVHC revision on <a href="http://www.commscope.com/ProductCompliance">www.commscope.com/ProductCompliance</a>
ROHS	Compliant
UK-ROHS	Compliant



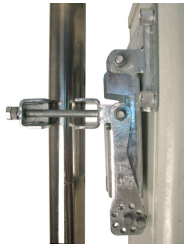
## Included Products

BSAMNT-3	–	Wide Profile Antenna Downtilt Mounting Kit for 2.4 - 4.5 in (60 - 115 mm) OD round members. Kit contains one scissor top bracket set and one bottom bracket set.
----------	---	------------------------------------------------------------------------------------------------------------------------------------------------------------------

## \* Footnotes

<b>Performance Note</b>	Severe environmental conditions may degrade optimum performance
-------------------------	-----------------------------------------------------------------

# BSAMNT-3



Wide Profile Antenna Downtilt Mounting Kit for 2.4 - 4.5 in (60 - 115 mm) OD round members. Kit contains one scissor top bracket set and one bottom bracket set.

## Product Classification

**Product Type** Downtilt mounting kit

## General Specifications

**Application** Outdoor

**Color** Silver

## Dimensions

**Compatible Diameter, maximum** 115 mm | 4.528 in

**Compatible Diameter, minimum** 60 mm | 2.362 in

**Weight, net** 6.2 kg | 13.669 lb

## Material Specifications

**Material Type** Galvanized steel

## Packaging and Weights

**Included** Brackets | Hardware

**Packaging quantity** 1

**Weight, gross** 6.4 kg | 14.11 lb

## Regulatory Compliance/Certifications

Agency	Classification
CE	Compliant with the relevant CE product directives
CHINA-ROHS	Below maximum concentration value
ISO 9001:2015	Designed, manufactured and/or distributed under this quality management system
REACH-SVHC	Compliant as per SVHC revision on <a href="http://www.commscope.com/ProductCompliance">www.commscope.com/ProductCompliance</a>
ROHS	Compliant
UK-ROHS	Compliant

# BSAMNT-3

---

