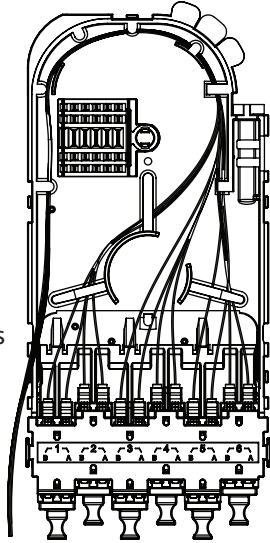


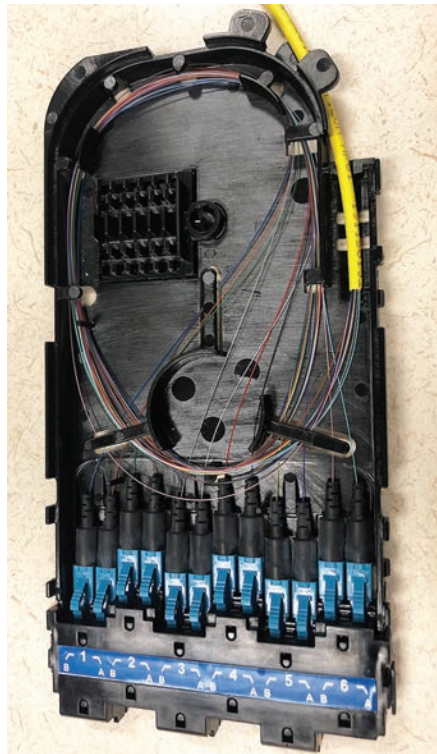
4 Install LC connectors into appropriate adapter port.

The Field Terminated Cassette will accept most connector styles with short boots or without boots.

Separate fibers and route counter-clockwise below retaining tabs.

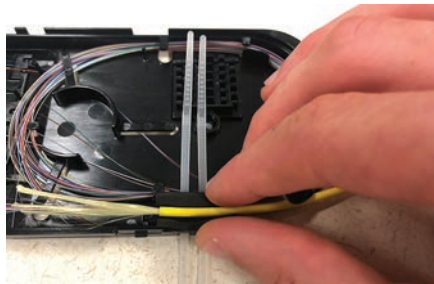
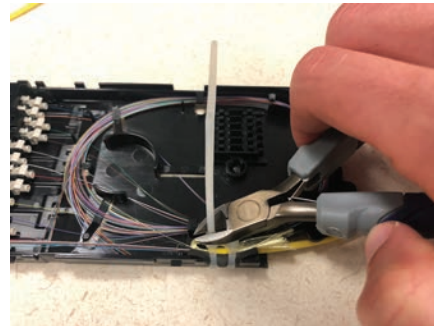
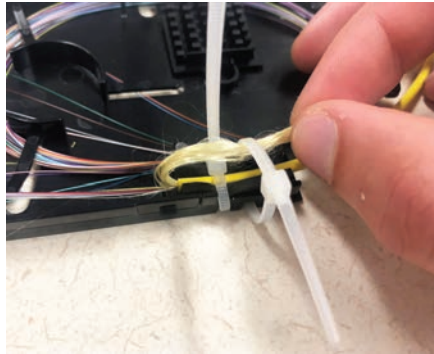


5 Wrap fiber as shown, with generous bend radius.



6 Secure cable jacket to cassette.

Place feeder fiber in foam wrap near end of cable jacket. Secure forward cable tie around fiber and foam wrap. fiber. Secure rearward cable tie around fiber, foam wrap, and strength members. Snip end off cable ties.



! *Caution: Prior to re-installing cover, carefully inspect routing to ensure all fibers are secured below retaining tabs and that fibers do not extend onto the edge designated for the cover.*



Compact High Density (CHD) Field Terminated Cassette

RBR (REDUCED BEND RADIUS) OR BEND INSENSITIVE FIBER IS REQUIRED WITH THIS APPLICATION.

LC CONNECTORS

CommScope Qwik II LC Connectors (Recommended)
CommScope Light Crimp + LC Connector (Alternative)

Qwik II LC CONNECTORS			
Fiber Type	Housing Color	Cable Size	CommScope MID
Multimode 50/125	Aqua	0.25mm, 0.9mm	760117887
Single-mode	Blue	0.25mm, 0.9mm	760117895
Multimode 62.5/125	Beige	0.25mm, 0.9mm	760117903
Multimode 50/125	Aqua	0.25mm, 0.9mm	760117911
Single-mode	Blue	0.25mm, 0.9mm	760117929
APC Single-mode	Green	0.25mm, 0.9mm	760184697
Multimode 62.5/125	Beige	0.25mm, 0.9mm	760117937

Technical Assistance and Ordering Guidance

<http://www.commscope.com/Support Center>

Tools & Material Required

Qwik II Universal Tool Kit (760119131) (QK-TERM-TOOL-KIT-QWIK II)
Recommended

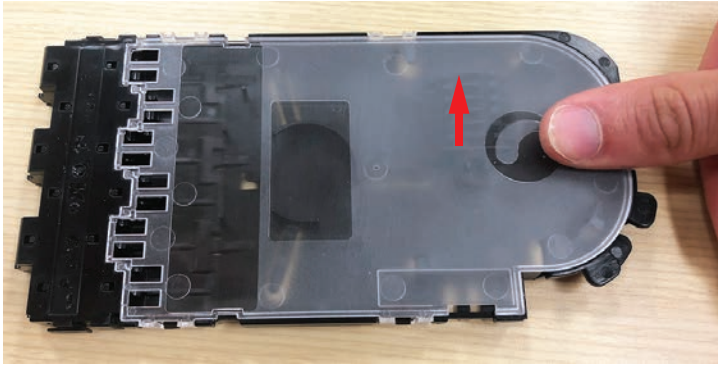
- (1) Fiber stripper
- (2) Fiber cleaver
- (3) Fiber cleaning solution, 2 oz.
- (4) Scrap fiber can
- (5) Lint-free cotton wipes
- (6) Cable stripper
- (7) Scissors
- (8) 0.25/0.9mm cable clamp
- (9) Marker
- (10) Strip length template
- (11) Instruction sheet



General Information

To remove cassette cover

Using thumb and finger, disengage five tabs one at a time, and lift off cover.



To re-install cassette cover

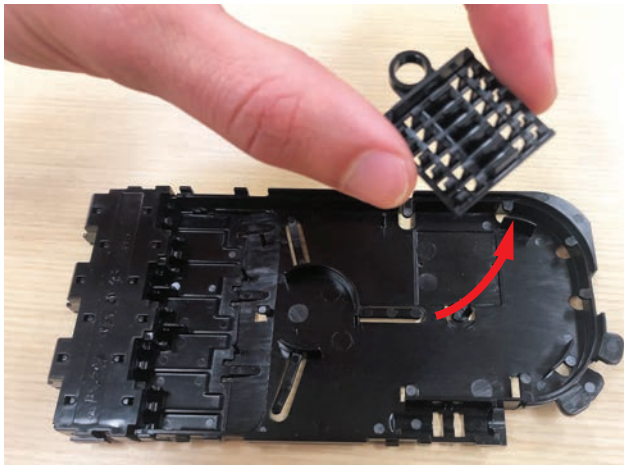
Place cover in position and press down to snap it into place on the five tabs.



Splice chip is removable.

Splice chip is for maintenance purposes only and can be removed if not required for your application.

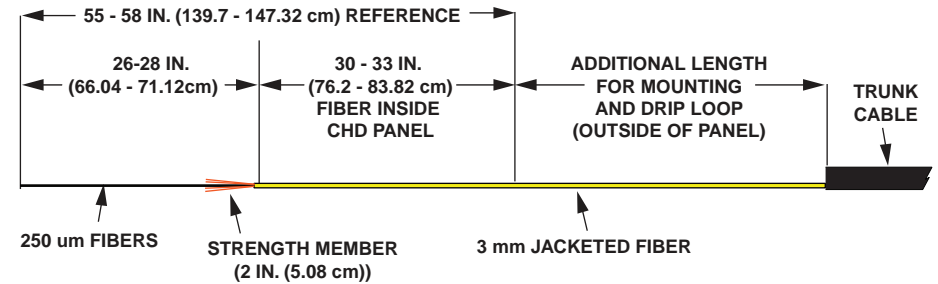
To remove splice chip, pinch latches inside round retaining detail and lift off.



Installation

1 Prepare feeder cable for installation.

Remove 26-28 inches (66.04-71.12 cm) of the feeder cable jacket, exposing 12 individual fibers for use in cassette. 30-33 in. (76.2-83.82 cm) of jacketed fiber will be required inside CHD panel for proper drawer movement. Additional length from trunk cable mounting location will need to be determined by installer (includes desired drip loop and routing length).



2 Install LC connectors on fibers.

Install LC connectors on ends of fibers as described in installation instructions.

3 Add colored label and marker to cassette.

Apply colored label (a) and marker (b) to cassette as shown. Colored adhesive labels and plastic markers are provided to identify cassette fiber and connector type. Apply blank connection ID label (c) as needed.

