

FACT-CTU-L-LT

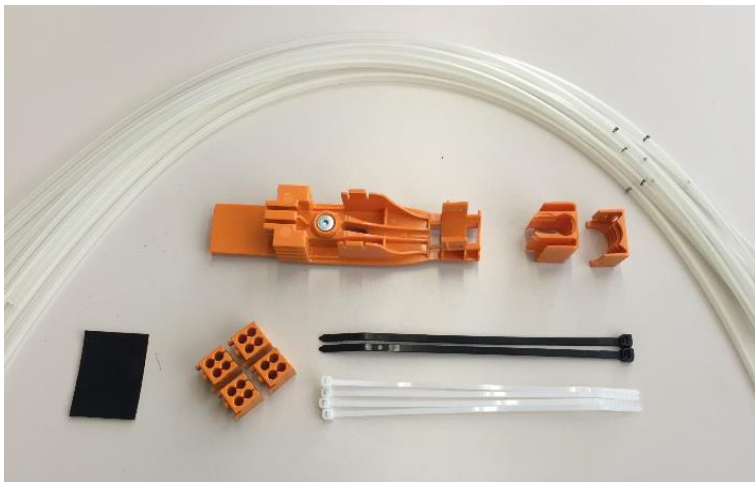
NOTE:

- the cable termination unit is designed to accommodate 1x fiber-cable with a maximum cable diameter of 15mm or 1x flex-tube 12/16mm or 2x flex-tube 6/10mm
- the cable needs to be flexible enough and allow a bend radius less than 75mm
- for fiber bundles with a diameter less than 2.7mm
- the kit contains all parts to install 1 pieces of fiber-cable/flex-tube on up to 2 FACT-element

CONTENT	1	General 1.1 Kit content 1.2 Tools required 1.3 Example drawing
	2	Cable preparation 2.1 General cable preparation 2.2 Cable without central strenght member 2.3 Cable with central strength member 2.4 2x flex-tube 6/10 or 1x flex-tube 12/16
	3	Routing and termination on FACT - splice element
	4	Routing and termination on FACT - splice/patch element

1 General

1.1 Kit content

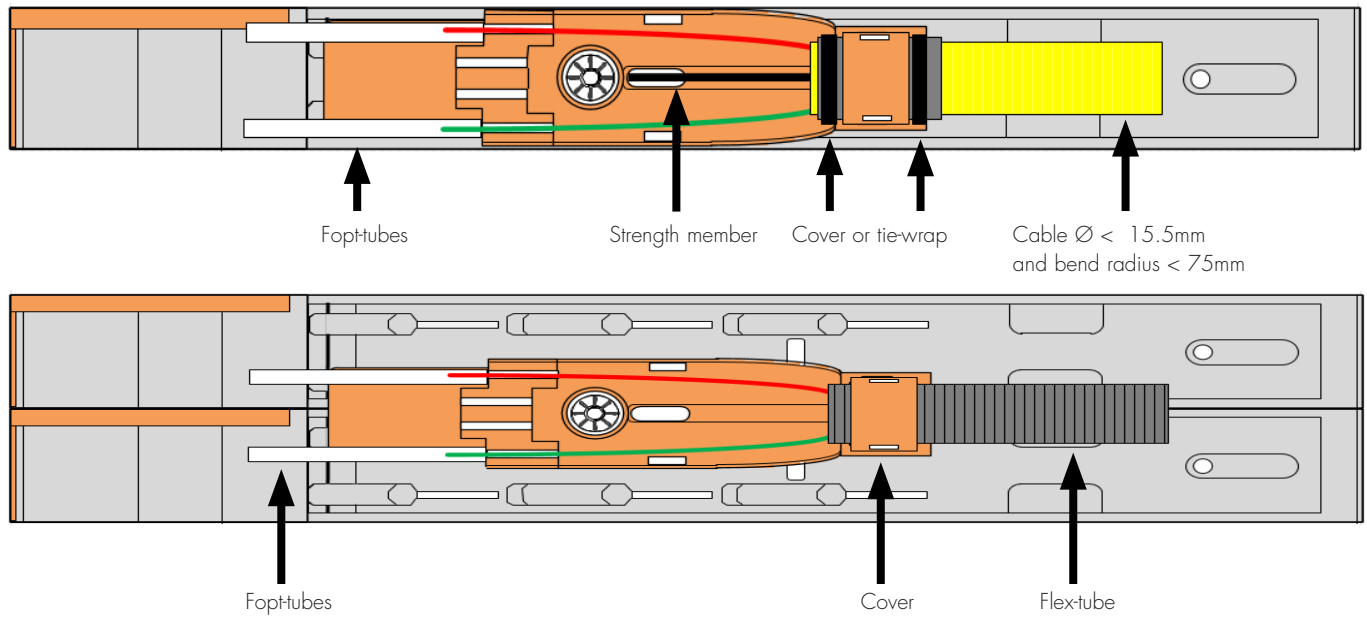


- 1x Cable termination unit large
- 1x Cover for 1x flex-tube 12/16mm
- 1x Cover for 2x flex-tube 6/10mm
- 4x Fopt-holder
- 8x Fopt-tube 540mm (marker at 430mm)
- 1x Foam
- 2x Tie-wrap black
- 4x Tie-wrap white
- 1x Allen key

1.2 Tool required

Standard installation tooling for fiber optic cable

1.3 Example drawing

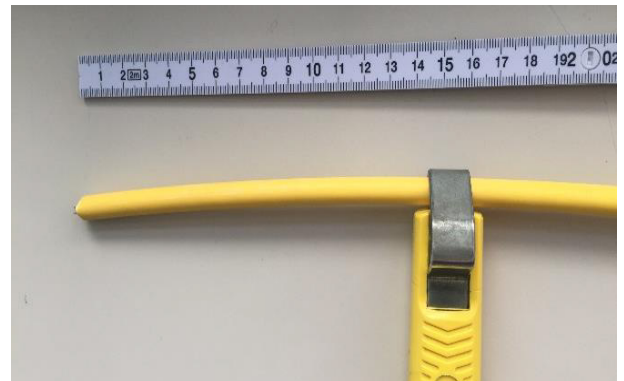


2 Cable preparation

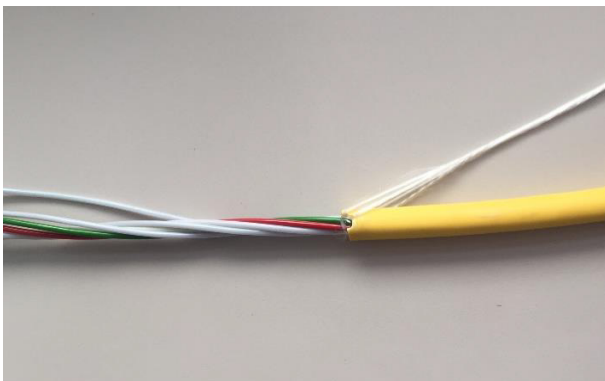
2.1 General cable preparation



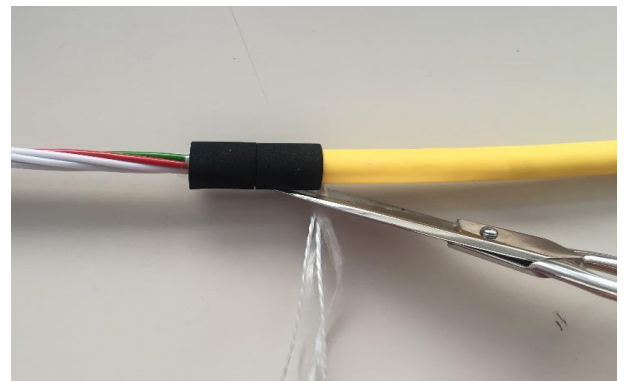
- 2.1.1 - mark the stripping point on the cable jacket
 - make sure you have at least 2 meters of cable left



- 2.1.2 Cut the cable jacket at the marked point **and** approx. 150mm from the cable end to get access to the rip-cord

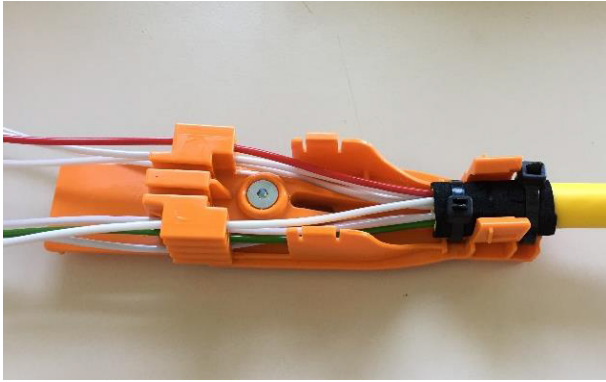


- 2.1.3 Use the rip-cord to strip off the cable jacket



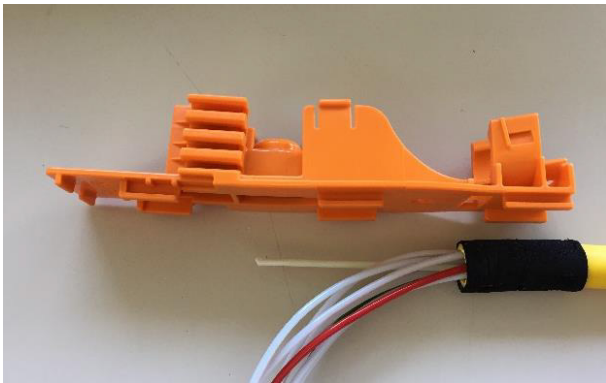
- 2.1.4 - Separate the aramid yarn from the loose-tubes carefully
 - Turn the aramid yarn
 - Apply a foam
 - Cut off the unnecessary aramid yarn

2.2 Cable without central strength member

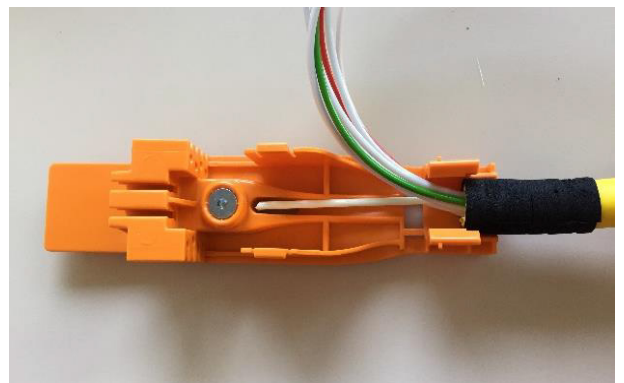


2.2.1 Fix the cable with 2 tie-wraps and cut them

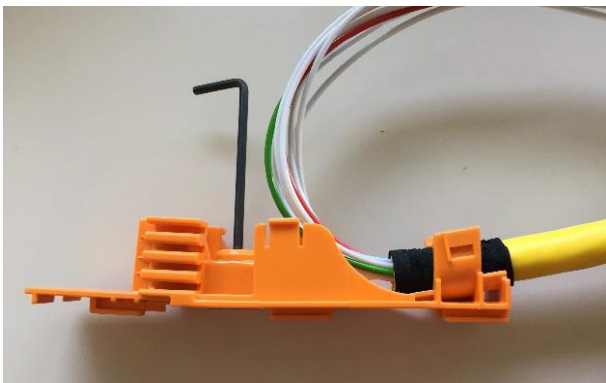
2.3 Cable preparation with central strength member



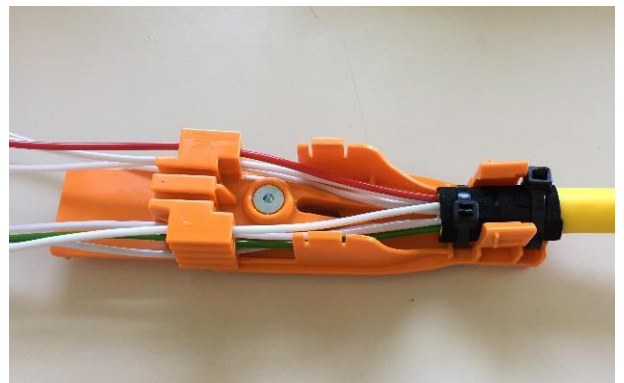
2.3.1 Cut the strength member on length of +/- 55mm



2.3.2 Feed the strength member to the backside



2.3.3 Fix the strength member by using the Allen key

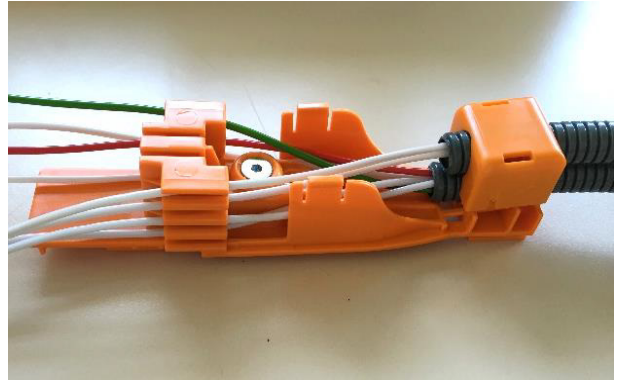


2.3.4 Fix the cable with 2 tie-wraps and cut them

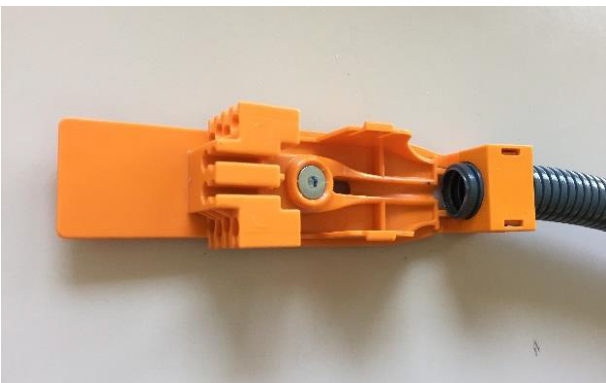
2.4 2x flex-tube 6/10 or 1x flex-tube 12/16



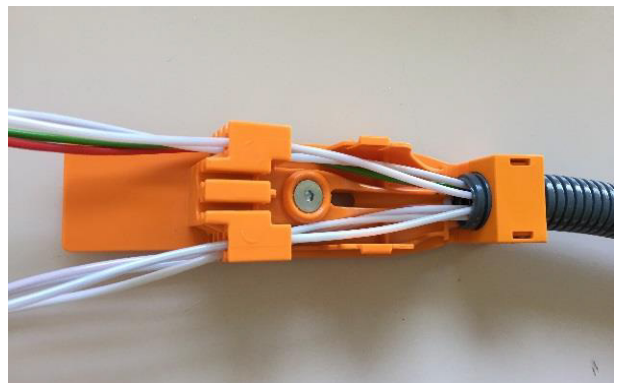
2.4.1 Install both 6/10mm flex-tubes with special cap like shown in the picture



2.4.2 In case of installing bundles not at the same time, to avoid stress on the installed bundles, use the second flex-tube at day two



2.4.3 Install 12/16mm flex-tube with special cap like shown in the picture



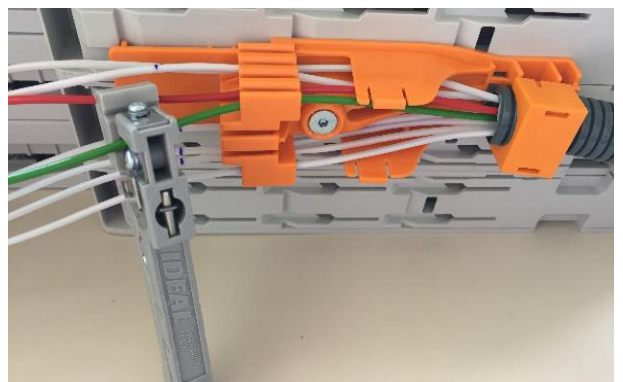
2.4.4 Install fiber-bundles like shown in the picture

3 Routing and termination on FACT – splice element

3.1 Outside termination



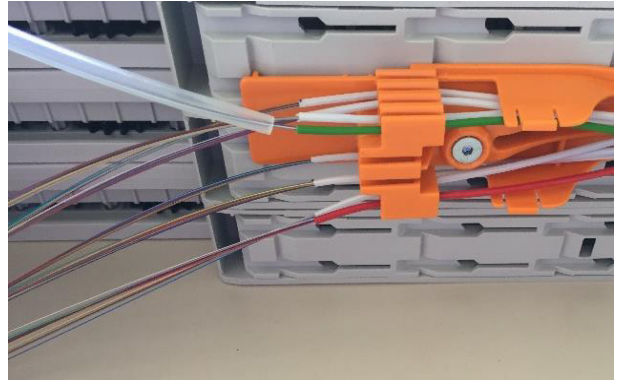
3.1.1 Mark the stripping point on the loose-tubes make sure that there is an overlap of 1cm behind the fopt-holder



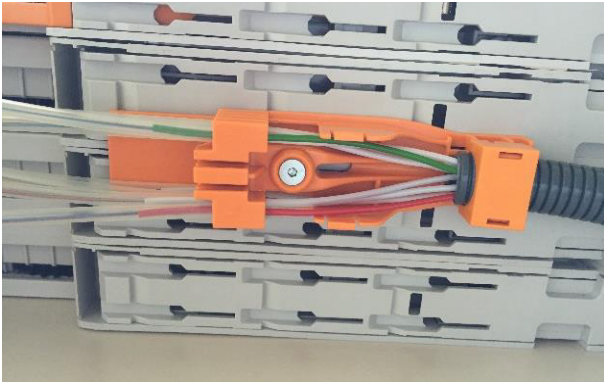
3.1.2 Cut the loose-tube at the marked point and clean the fibers



3.1.3 Cut the fopt-tubes at the mark (430mm)

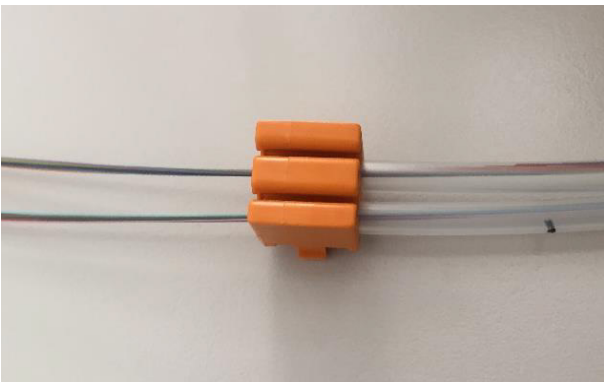


3.1.4 Slide the fopt tube over the fiber bundle

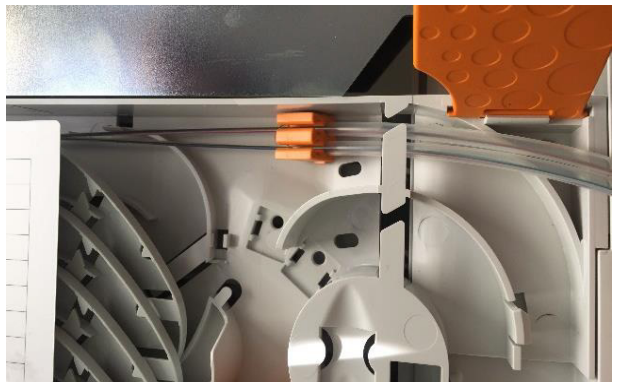


3.1.5 Put the fopt-tube into the fopt-holder
make sure the fopt-tube is pushed to the end

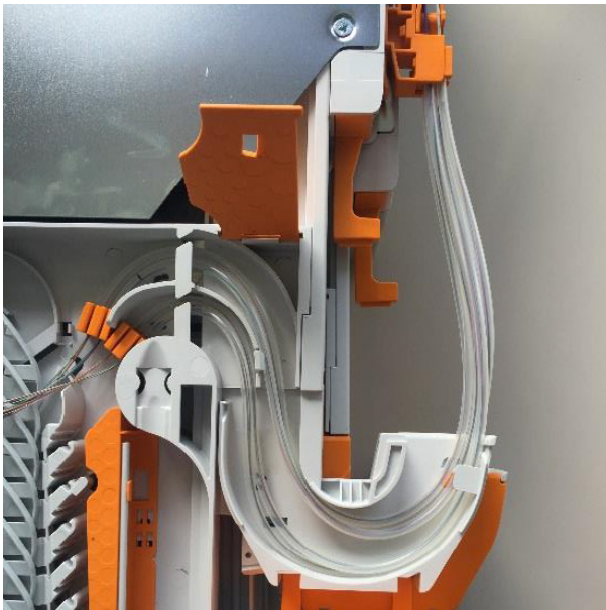
3.2 Inside routing and termination



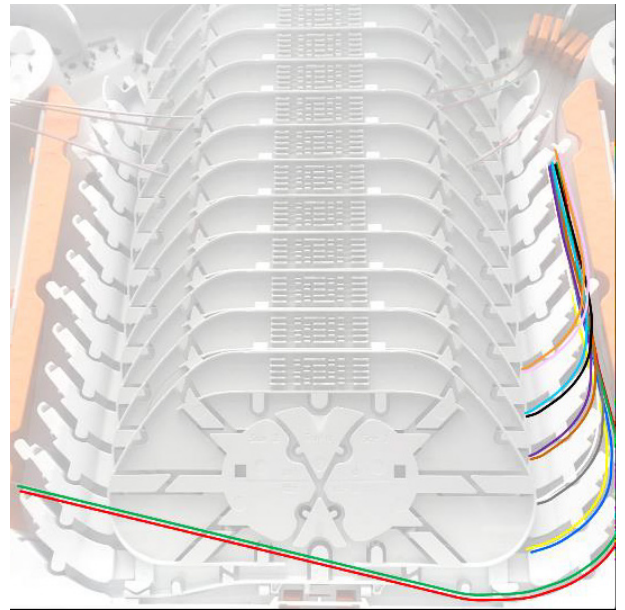
3.2.1 Put the fopt tubes into the fopt-holder
in case of installing 5 up to 8 fopt-tubes use 2
fopt-holder



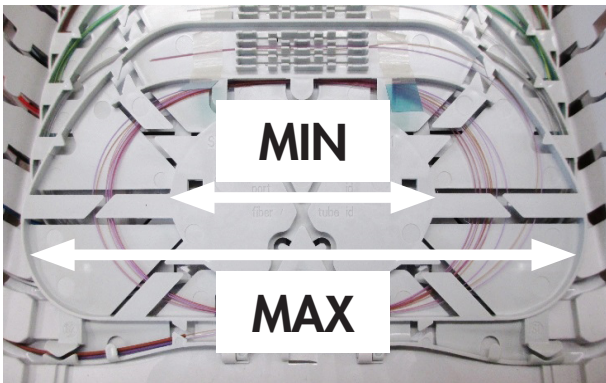
3.2.2 Open the orange covers and guide the fopt-tube
into the splice drawer



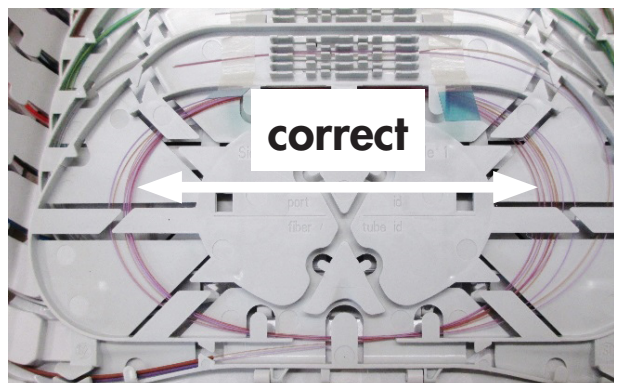
3.2.3 Click the fopt-holder(s) into the splice drawer and guide the fopt-tubes as shown in the picture



3.2.4 Route the fiber throughout the groove plate to the dedicated splice trays



3.2.5 Attention to correct fiber storage - A properly stored fiber don't touch the bend radius limiter on inner or outer side and can move

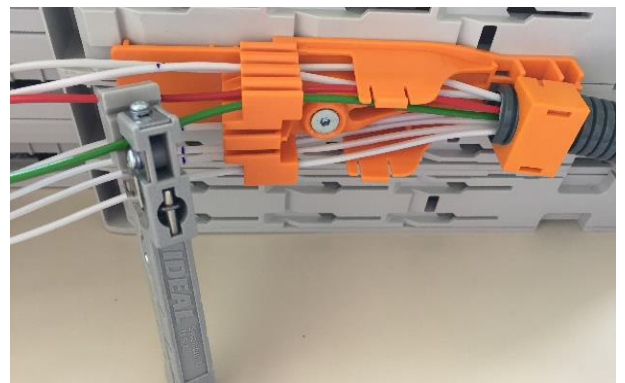


4 Routing and termination on FACT – splice/patch element

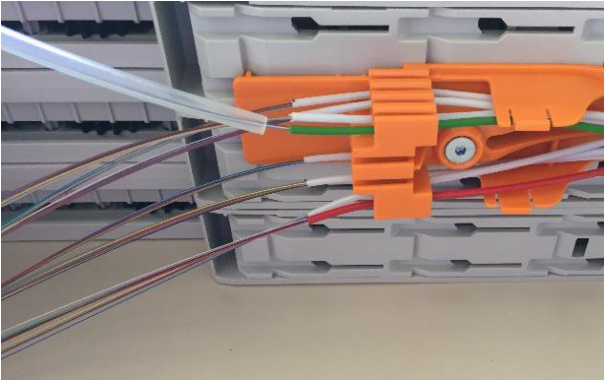
4.1 Outside termination



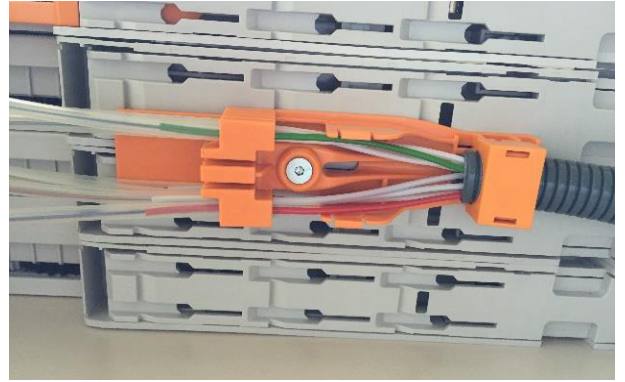
4.1.1 Mark the stripping point on the loose-tubes make sure that there is an overlap of 1cm behind the fopt-holder



4.1.2 Cut the loose-tube at the marked point and clean the fibers

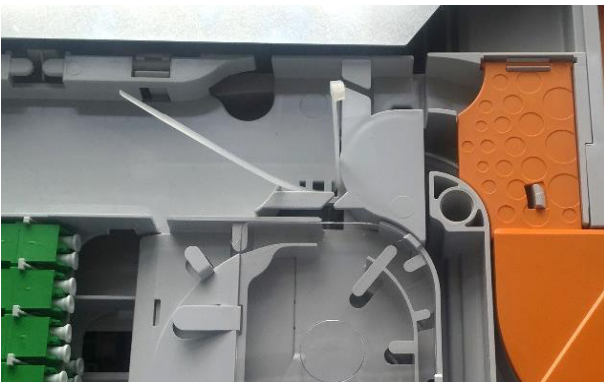


4.1.3 Slide the fopt-tube over the fiber bundle



4.1.4 Put the fopt-tube into the fopt-holder
make sure the fopt-tube is pushed to the end

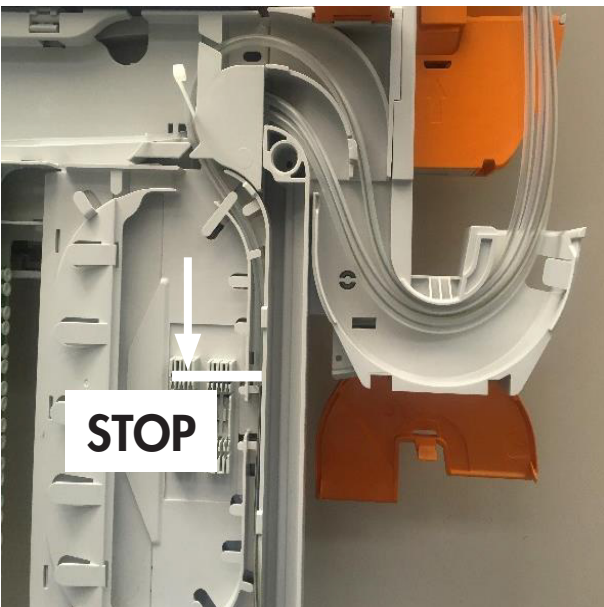
4.2 Inside routing and termination



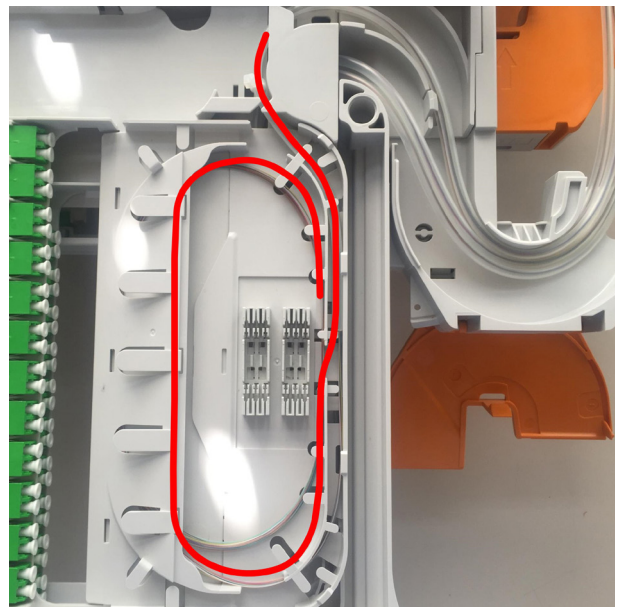
4.2.1 Install the white tie-wrap like shown in the picture



4.2.2 Open the orange covers and guide the fopt-tube(s)
Into the splice/patch drawer



4.2.3 Guide the fopt-tube(s) under the lids into the splice
cassette
stop at the mark as shown on the picture



4.2.4 Fix the fopt-tube(s) with the tie-wrap and store
the fiber in the splice cassette

CommScope Connectivity Belgium bvba

Diestsesteenweg 692
B-3010 Kessel-Lo, Belgium
Tel.: 32-16-351 011
Fax: 32-16-351 697
commscope.com

Visit our website or contact your local CommScope representative for more information.

© 2016 CommScope, Inc. All rights reserved.

All trademarks identified by ® or ™ are registered trademarks or trademarks, respectively, of CommScope, Inc.
This document is for planning purposes only and is not intended to modify or supplement any specifications or warranties relating to
CommScope products or services.

TC 1338/6/IP/1 07/16