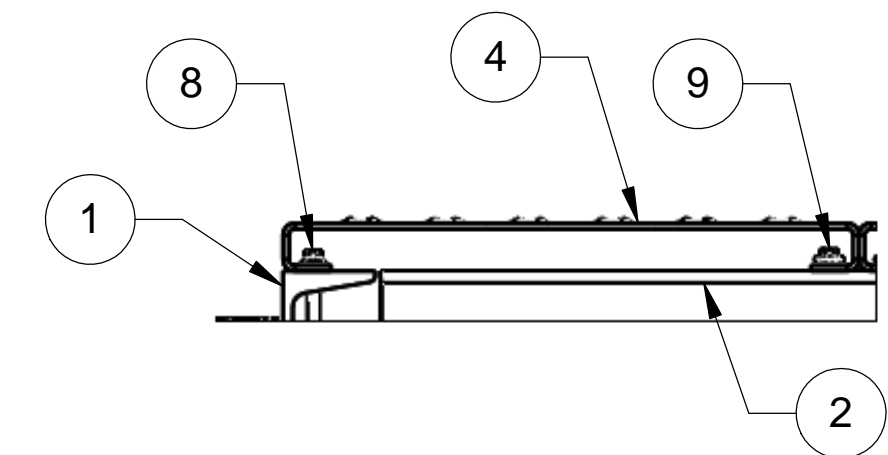
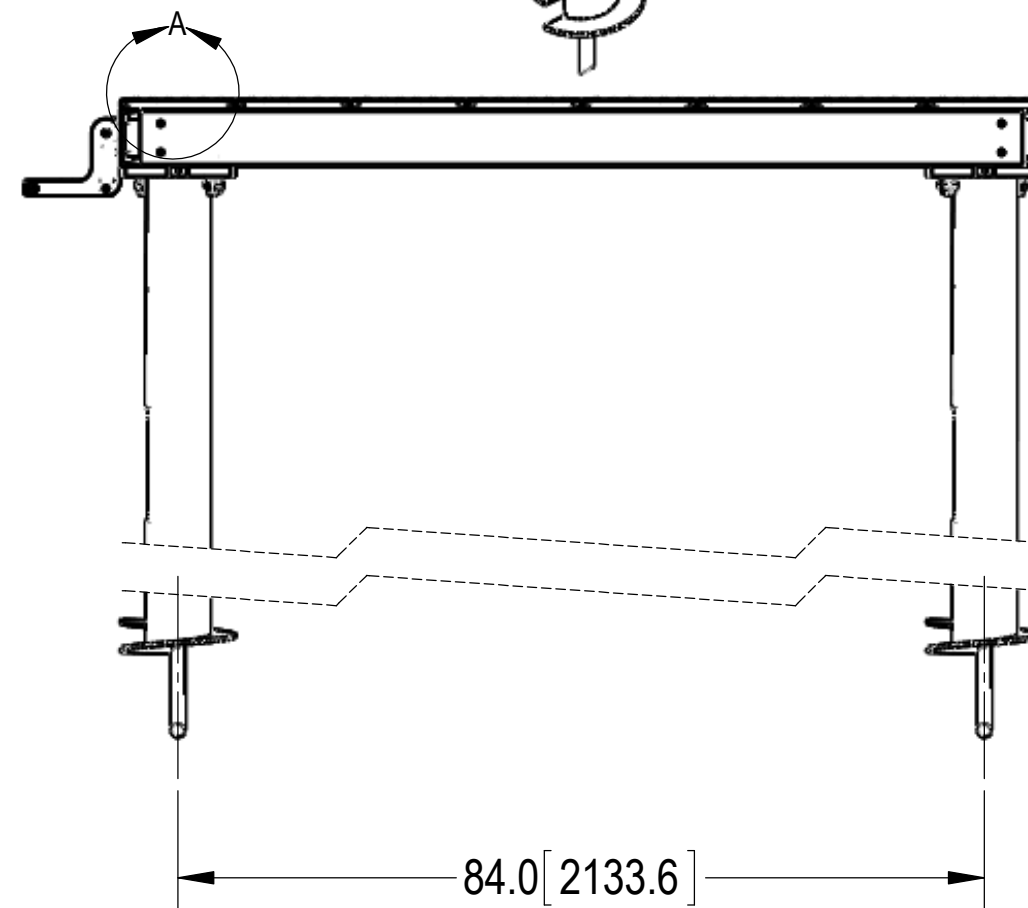
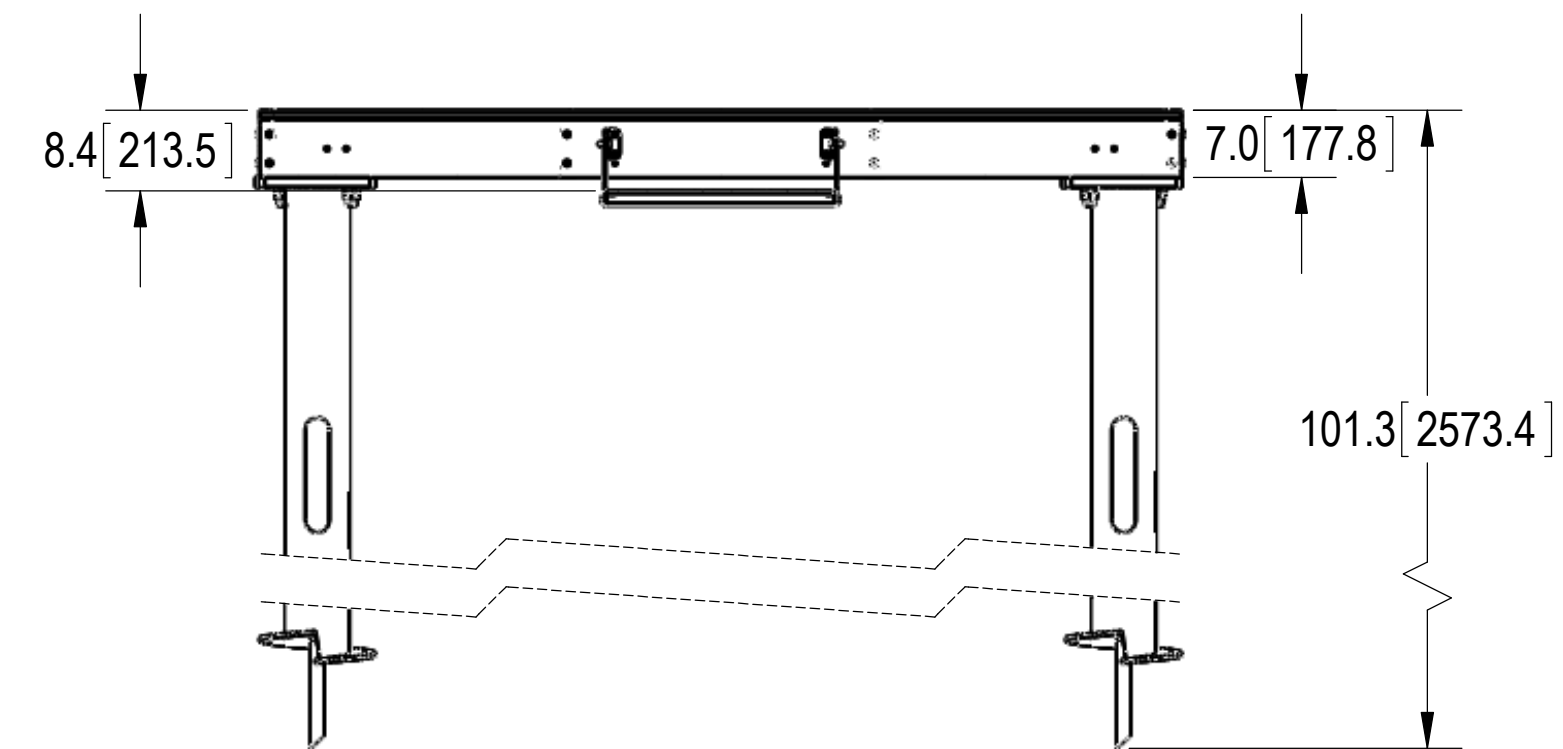
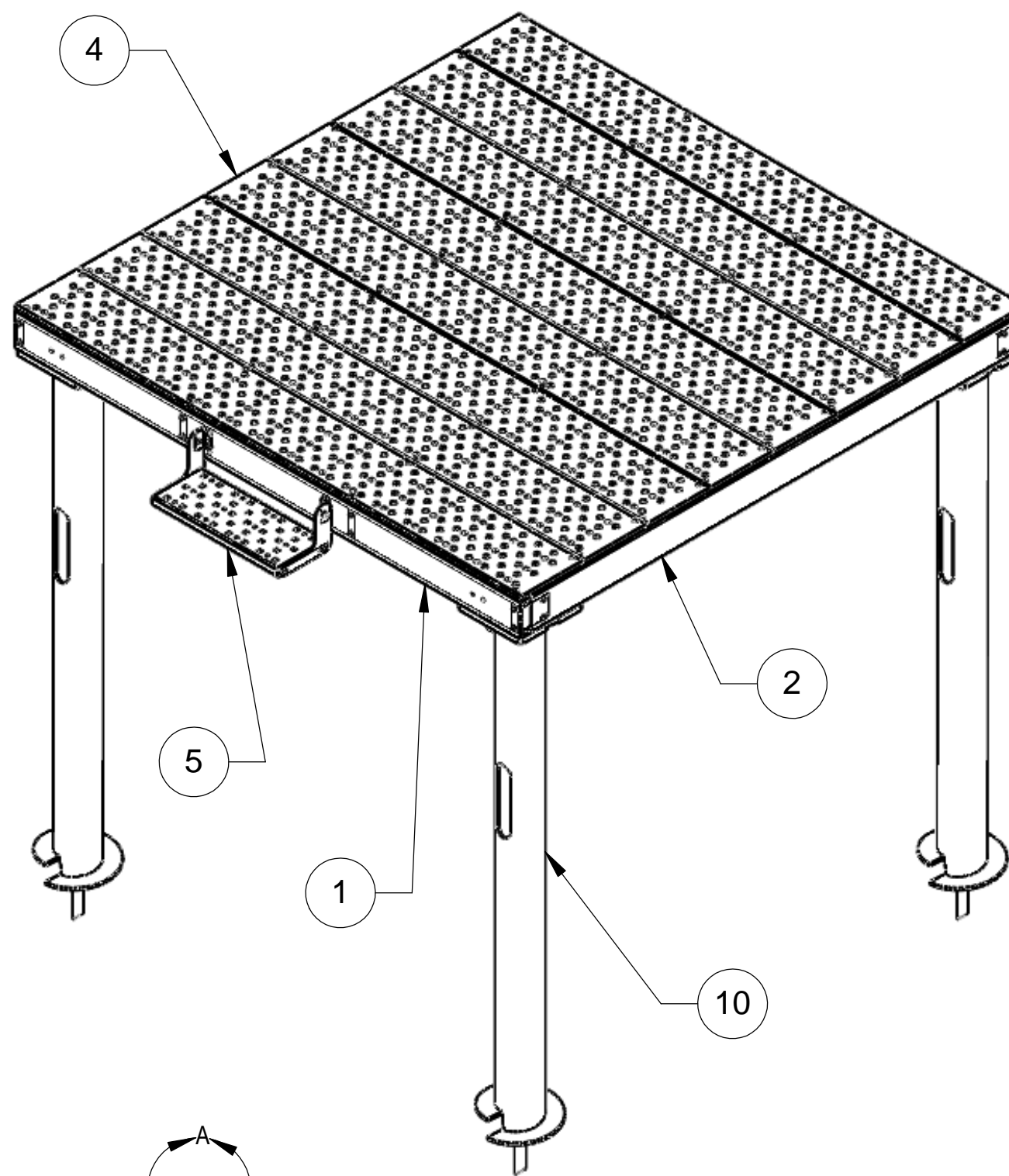
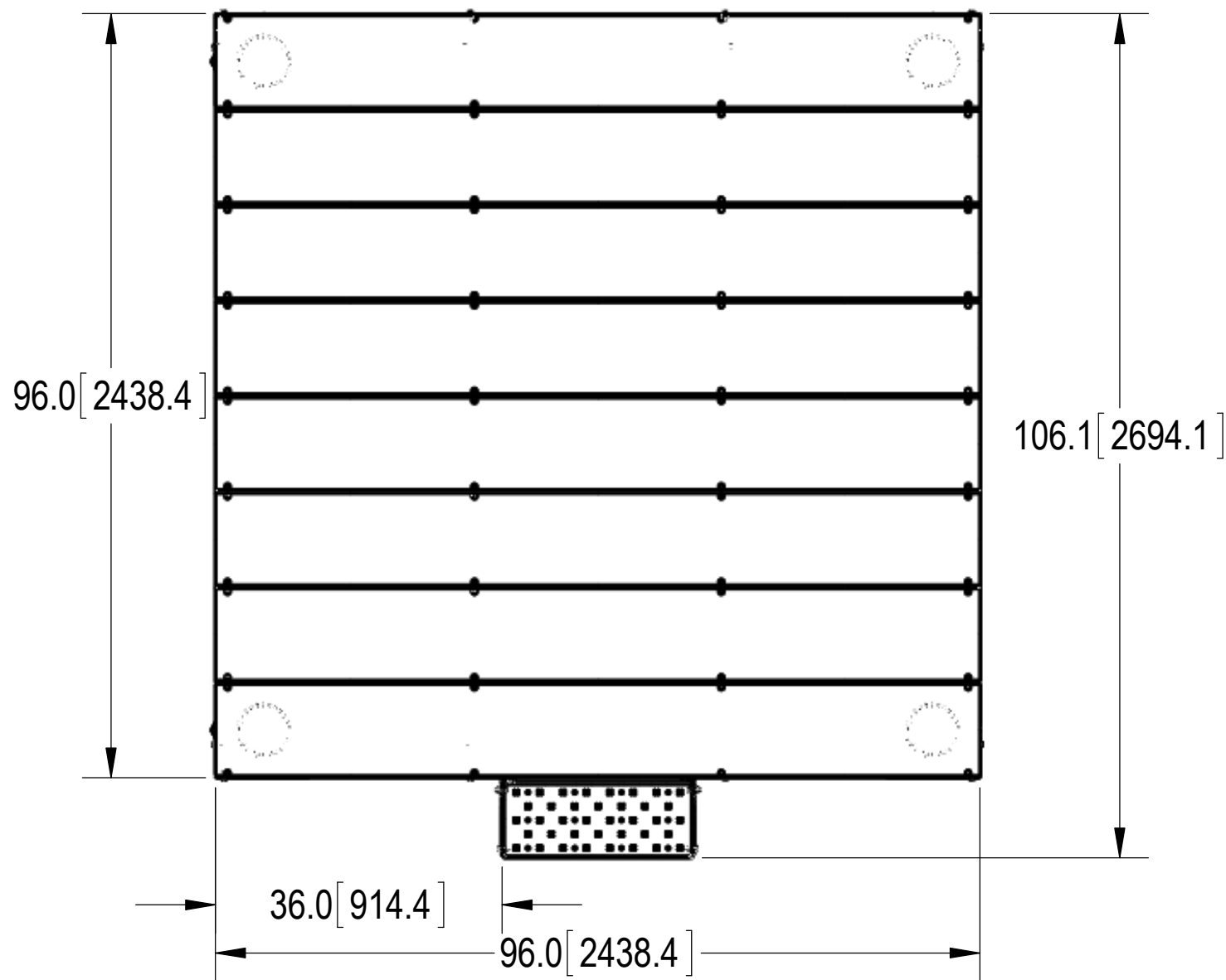


NOTES:

1.0 ALL METRIC DIMENSIONS ARE IN BRACKETS.

REVISIONS				
REV.	ECN	DESCRIPTION	BY	DATE
A	8000028395	INITIAL RELEASE	RJC	02/15/18



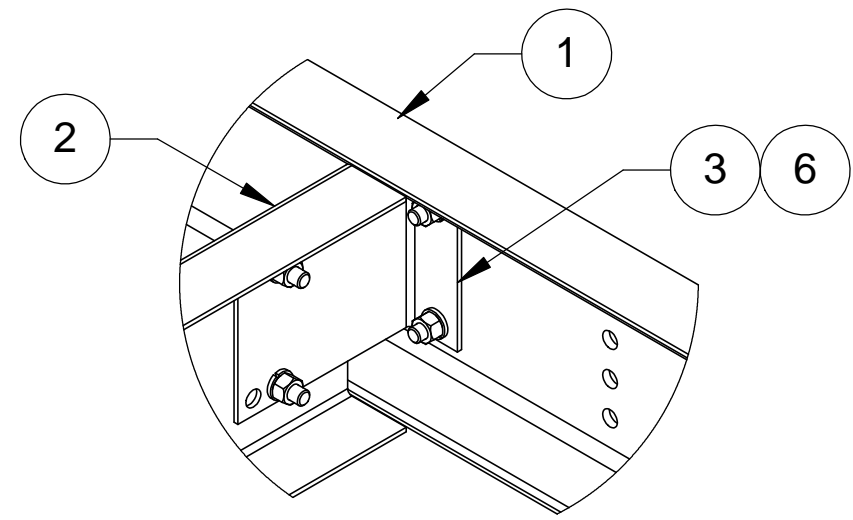
DETAIL A  
SCALE 1 : 4

ITEM	PART NO.	DESCRIPTION	QTY.	WEIGHT	NOTE NO.
1	MTC398801	CHANNEL, 8' PLATFORM	2	65.80 LBS	
2	MTC398904	CHANNEL, FORMED 6" X 8' PLATFORM	4	28.99 LBS	
3	MTC398905	BRACKET, CHANNEL ADAPTER	8	0.82 LBS	
4	MTC398996	DECK, 8' FORMED	8	47.49 LBS	
5	MTC3922S	STEP FOR LIGHT DUTY PLATFORM	1	15.01 LBS	
6	GB-03105	3/8" X 1" GALV BOLT KIT	32	0.05 LBS	
7	GB-03145	3/8" X 1-1/2" GALV BOLT KIT	4	0.07 LBS	
8	TS1220	12-24 X 2" SELF DRILLING SCREW	8	0.03 LBS	
9	TS1275	TEK SCREW #12 X 3/4, WITH NEOPRENE WASHER	56	0.02 LBS	
10	MTC3989HA07	ANCHOR, HELICAL	4	173.12	
11	MTC397901	PINCH PLATE	4	0.90 LBS	
12	MTC397902	PINCH PLATE, LONG	4	2.84 LBS	
13	GB-0828A	1"-8 X 3-1/2" GALV BOLT KIT (A325)	12	1.10 LBS	
14	GWF-08	1" Galv Flat Washer	16	0.09 LBS	

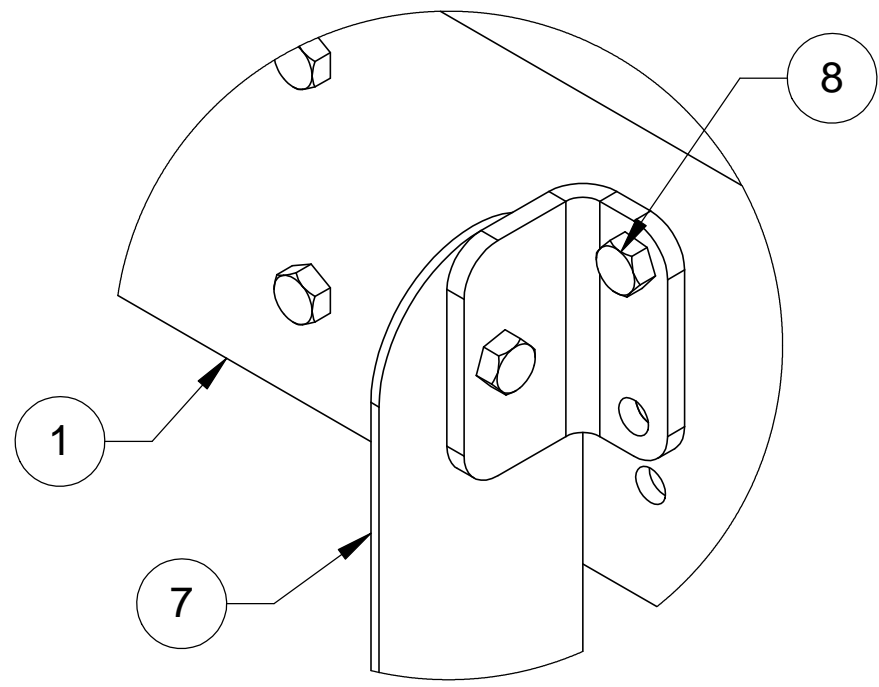
DENSITY	0.28	lbs/in <sup>3</sup>
MASS	1403.98	lbs
VOLUME		in <sup>3</sup>
SURFACE AREA		in <sup>2</sup>
HEIGHT		
LENGTH		
WIDTH		

COMMSCOPE, INC. OF NORTH CAROLINA									
TOLERANCES		SAP MATERIAL MASTER							
0 PLACE X ± .25	2 PLACE .XX ± .06	<b>MTC3988AR</b>							
1 PLACE .X ± .12	ANGLES ± 2°								
FINISH		MATERIAL							
<b>GALV A123</b>		<b>A1011/A1018, A529</b>							
UNLESS OTHERWISE SPECIFIED DIMENSIONS ARE IN MILLIMETERS INTERPRET PER ISO STANDARDS HANDBOOK TECHNICAL DRAWINGS VOLUMES 1 & 2, THIRD EDITION (2002)	NAME	DATE	TITLE						
	CE <b>MRC</b>	11/14/17	<b>8' X 8' PLATFORM, HELICAL ANCHORS</b>						
	RW								
	AD								
	RE <b>TP</b>	11/14/17	SCALE <b>1:20</b> DOCUMENT NO. <b>MTC3988AR</b>						
ECN <b>8000028395</b>	SIZE	WORK AREA	MODEL						
<b>C</b>		VERSION	STATUS	REVISION	VERSION	STATUS	REVISION	SHEET	
								<b>A</b>	1 OF 2

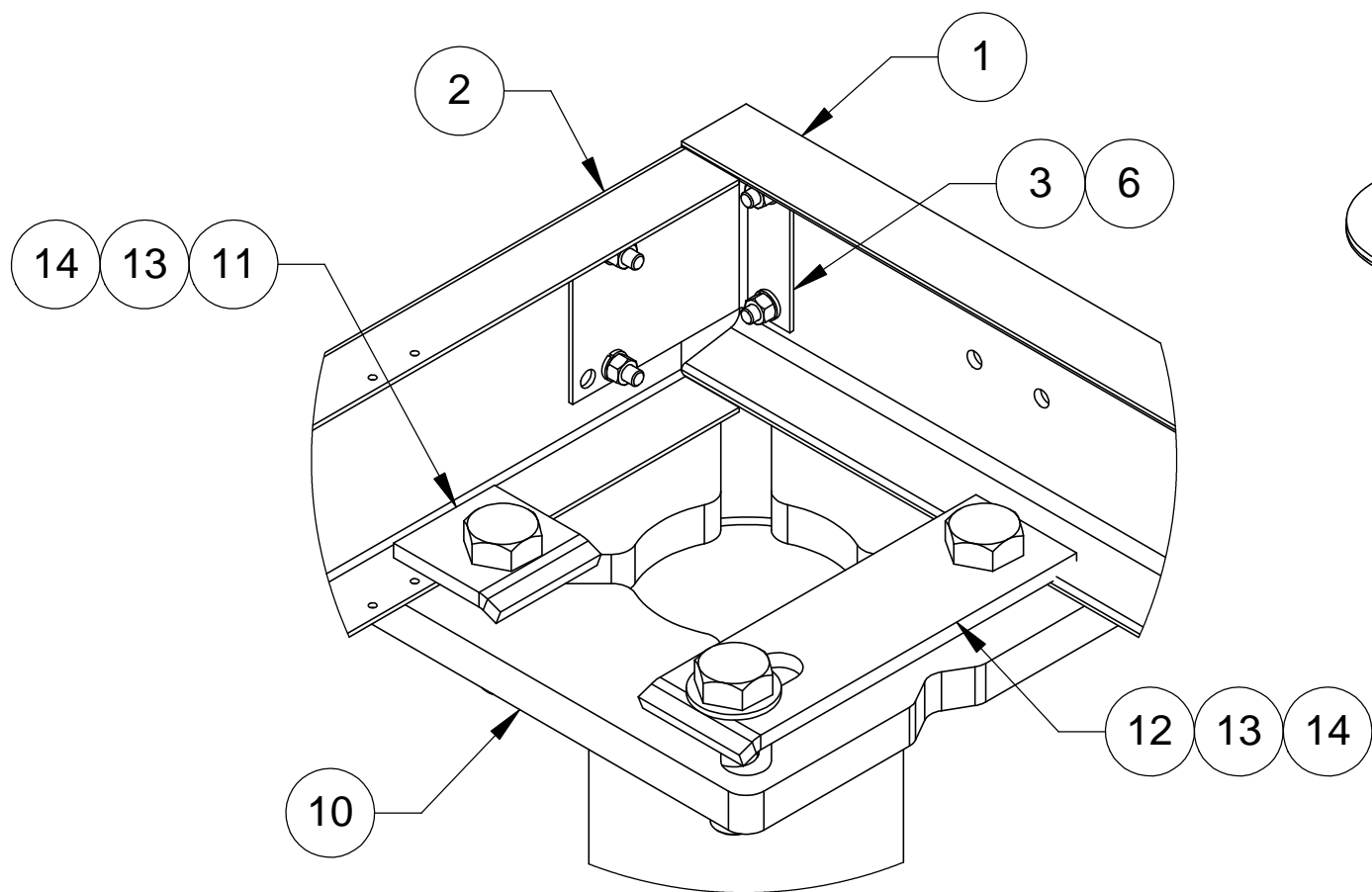
NOTES:  
1.0 ALL METRIC DIMENSIONS ARE IN BRACKETS.



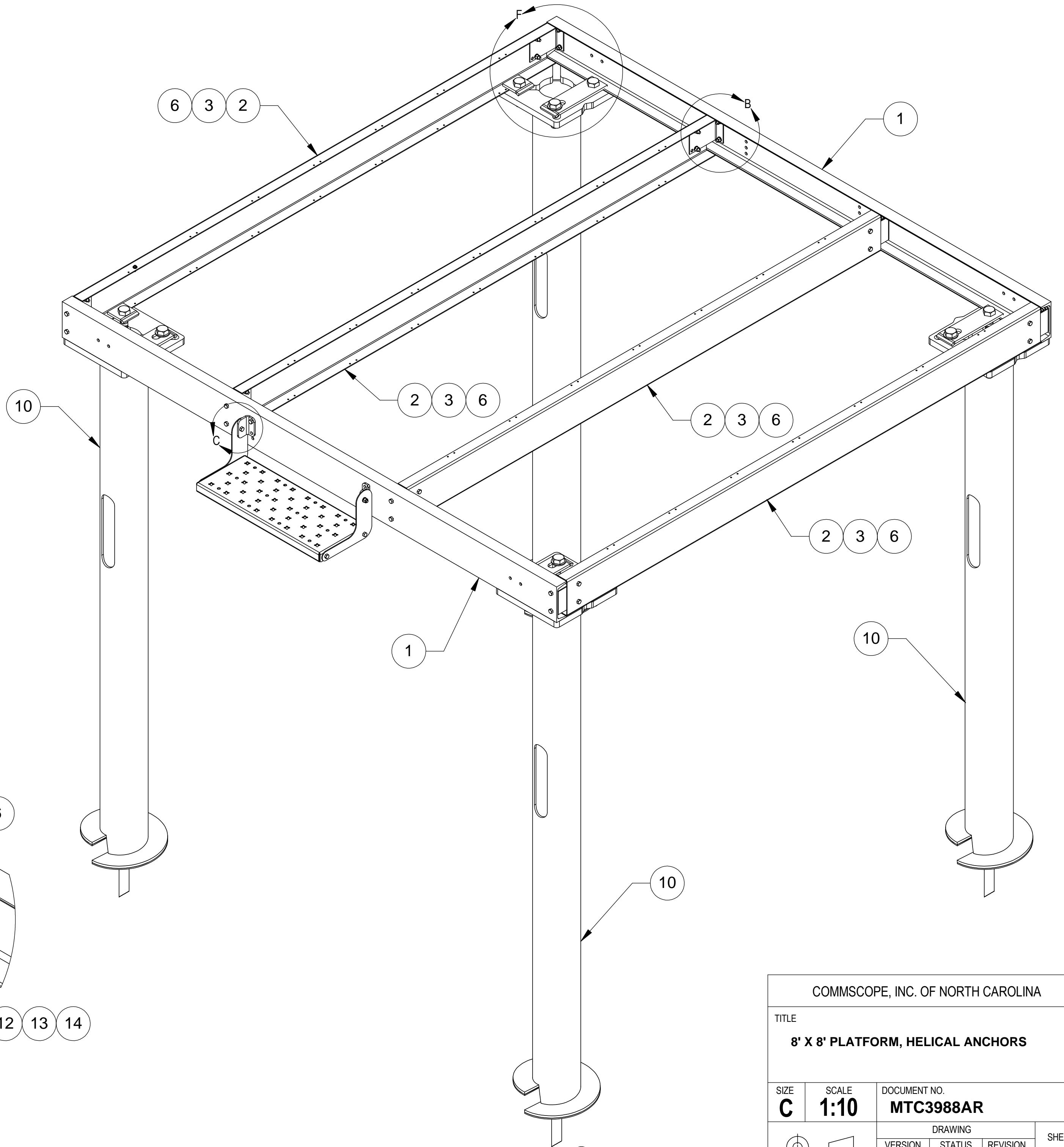
DETAIL B  
SCALE 1:4



DETAIL C  
SCALE 1:2



DETAIL F  
SCALE 1:4



COMMSCOPE, INC. OF NORTH CAROLINA			
TITLE <b>8' X 8' PLATFORM, HELICAL ANCHORS</b>			
SIZE <b>C</b>	SCALE <b>1:10</b>	DOCUMENT NO. <b>MTC3988AR</b>	
DRAWING		REVISION	SHEET
VERSION	STATUS	A	2 OF 2

© 2015 CommScope, Inc. Confidential