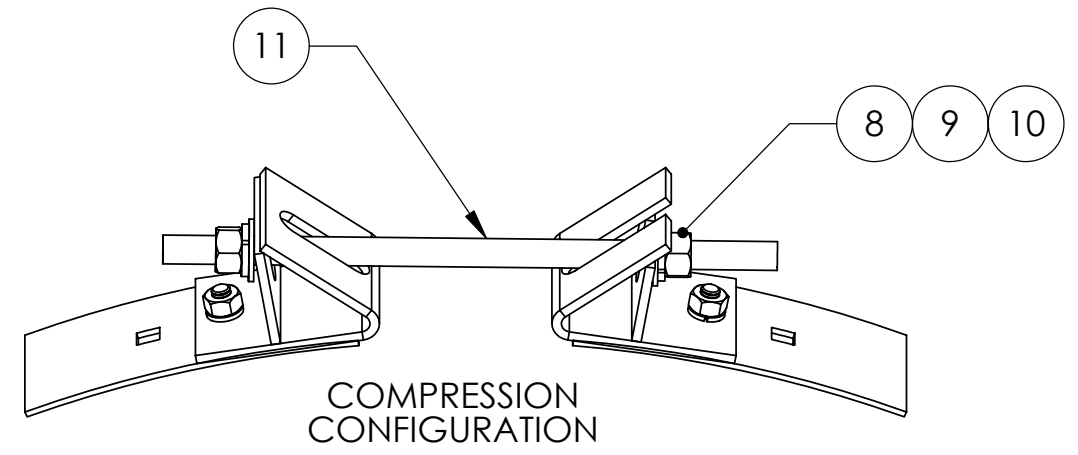
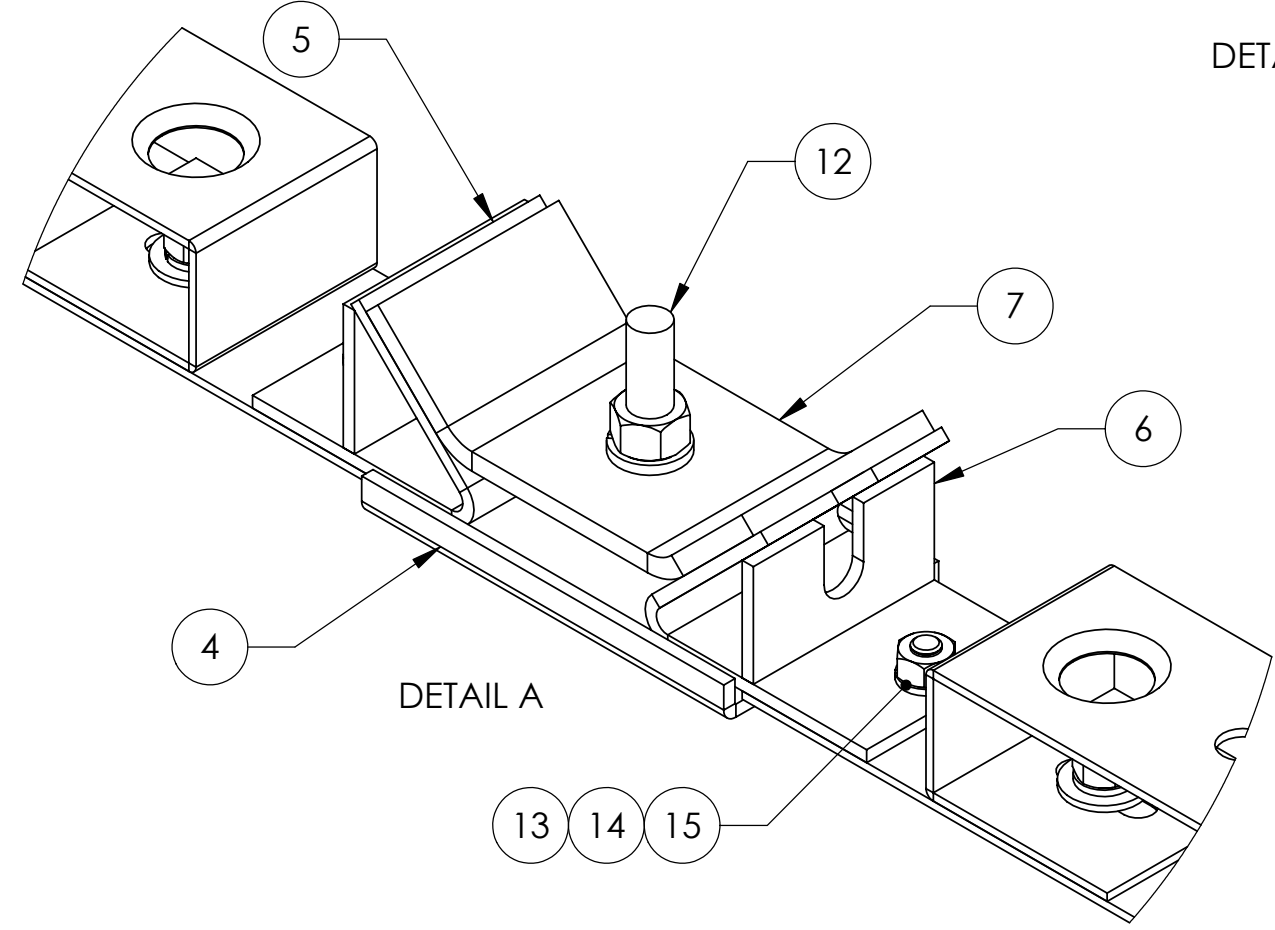
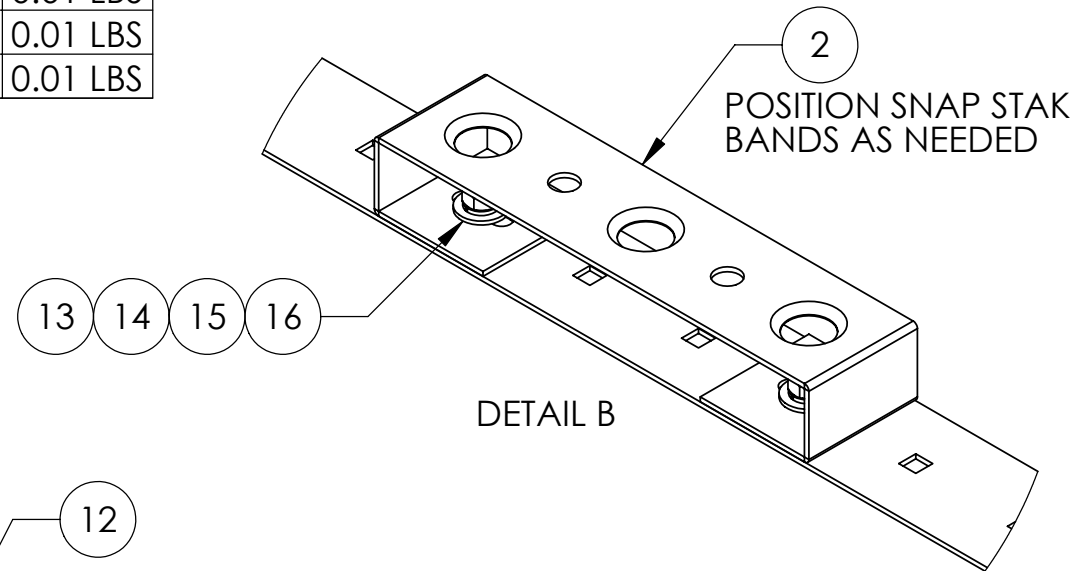
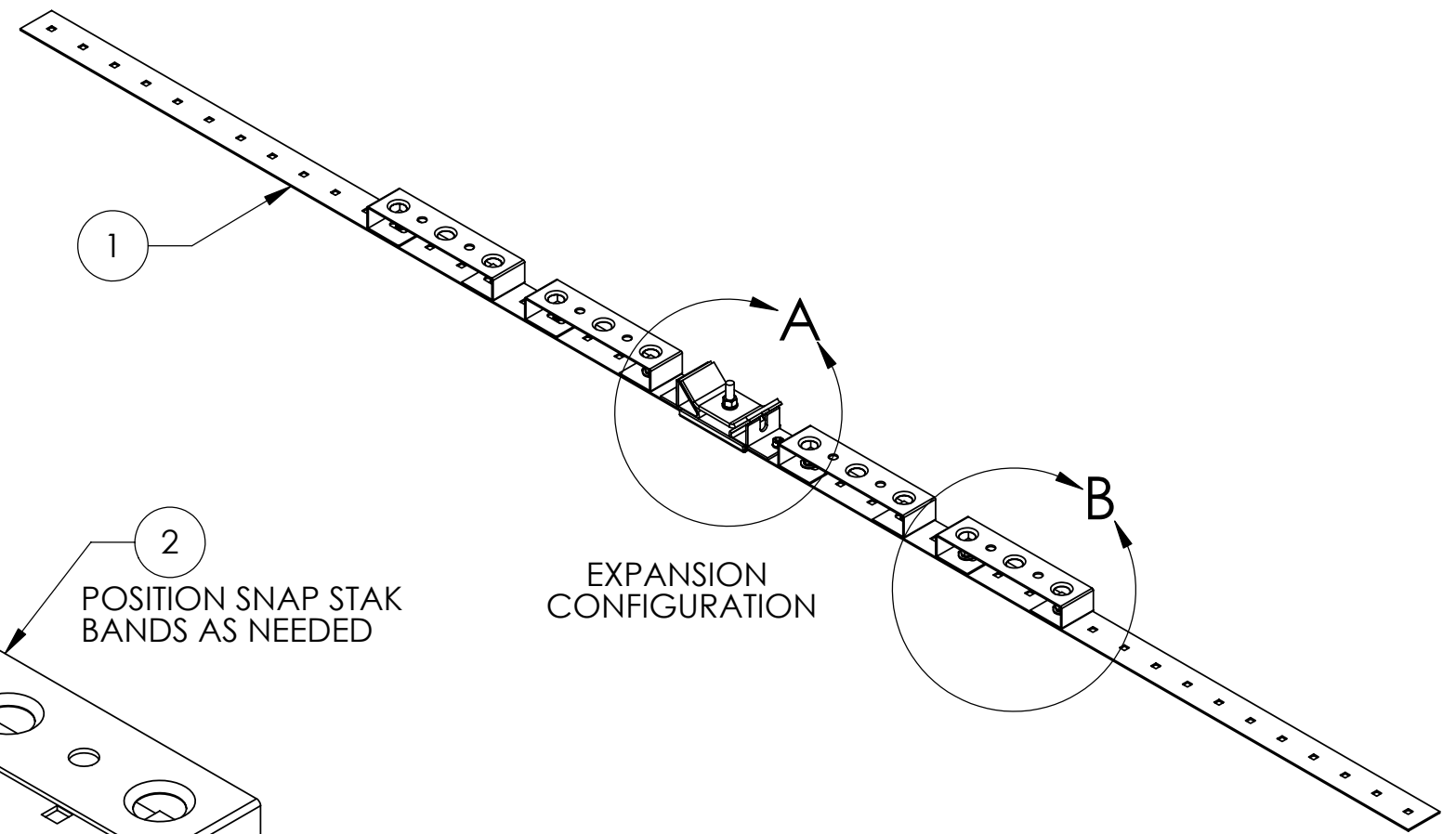



ITEM	PART NO.	DESCRIPTION	QTY.	WEIGHT
1	EXP.09	BAND	5	0.64 LBS
2	EXP.10	SNAP STAK BAND	4	0.21 LBS
3	EXP1060H	HARDWARE KIT ITEM#4-16	1	
4	EXP.03	BACKING PLATE	1	0.39 LBS
5	EXP.01	CLOSED WELDED ANGLE	1	0.36 LBS
6	EXP.02	OPEN WELDED ANGLE	1	0.34 LBS
7	EXP.08	CLAMP PLATE	1	0.51 LBS
8	GN-03	3/8" GALV HEX NUT	2	0.01 LBS
9	GWL-03	3/8" GALV LOCK WASHER	3	0.01 LBS
10	GWF-03	3/8" GALV FLAT WASHER	3	0.01 LBS
11	GD-03800	3/8" X 8" GALV ALL THREAD	1	0.25 LBS
12	CB03225	3/8" x 2 1/4" CARRIAGE BOLT	1	0.05 LBS
13	EB0205	1/4" X 1/2" ELEVATOR BOLT	18	0.01 LBS
14	SN-02	1/4" S.S. HEX NUT	18	0.01 LBS
15	SWL-02	1/4" S.S. LOCK WASHER	18	0.01 LBS
16	SWF-02	1/4" S.S. FLAT WASHER	18	0.01 LBS

REVISIONS				
REV.	ZONE	DESCRIPTION	BY	DATE
A		INITIAL RELEASE	AW	1/30/2006



<small>These drawings and specifications are the proprietary property of ANDREW CORPORATION and may be used only for the specific purpose authorized in writing by Andrew Corporation.</small> ALL DIMENSIONS ARE IN INCHES U.O.S. TOLERANCES UNLESS OTHERWISE SPECIFIED: .X = ± .06 ANGLES ± 2° .XX = ± .03 FRACTIONS ± 1/32 .XXX = ± .010 REMOVE BURRS AND BREAK EDGES .005 DO NOT SCALE THIS PRINT	DRAWN BY: AW	SHEET: 1 of 2	PART NUMBER: EX-PI060
	CHECKED BY: TP	SCALE: NTS	DESCRIPTION: UNIVERSAL EXPANSION/COMPRESSION BAND
	DATE: 01/18/05	MATERIAL: A36, ALUM.	DRAWING TYPE: ASSEMBLY DRAWING
	REVISION: A	FINISH: GALV A123	 ORLAND PARK, IL. 60462 U.S.A.
	WEIGHT: 6.00 LBS		

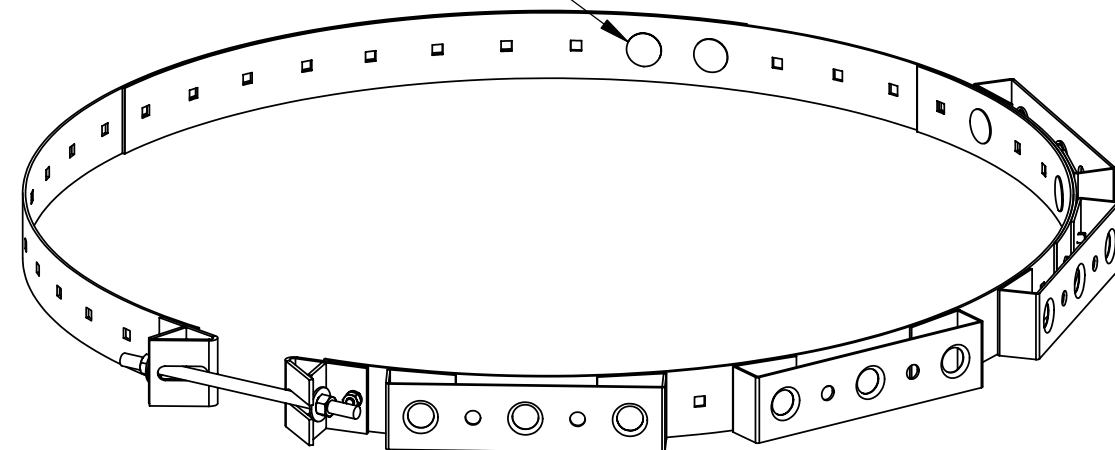
COMPRESSION CHART

DIA.	BAND LENGTH
10"	24"
12"	30"
14"	38"
16"	44"
18"	50"
20"	56"
22"	62"
24"	68"
26"	74"
28"	82"
30"	88"
32"	94"
34"	100"
36"	106"
38"	112"
40"	120"
42"	124"
44"	132"
46"	138"
48"	144"
50"	150"
52"	156"
54"	164"
56"	170"
58"	176"
60"	182"

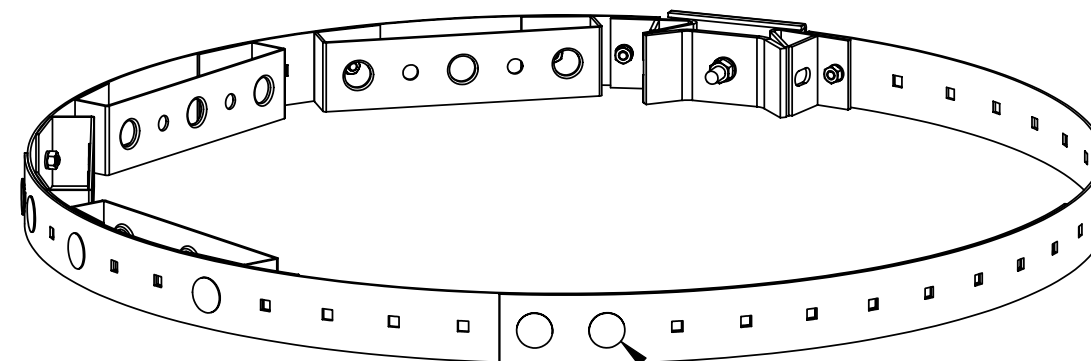
EXPANSION CHART

DIA.	BAND LENGTH
30"	92"
32"	98"
34"	104"
36"	110"
38"	116"
40"	124"
42"	130"
44"	136"
46"	142"
48"	148"
50"	154"
52"	160"
54"	168"
56"	174"
58"	180"
60"	186"

2 ELEVATOR BOLTS PER BAND CONNECTION POINT



COMPRESSION CONFIGURATION



ELEVATOR BOLT

EXPANSION CONFIGURATION

NOTE: BAND LENGTH IS MEASURED FROM END TO END OF FLAT BANDS.

<small>These drawings and specifications are the proprietary property of ANDREW CORPORATION and may be used only for the specific purpose authorized in writing by Andrew Corporation.</small> ALL DIMENSIONS ARE IN INCHES U.O.S. TOLERANCES UNLESS OTHERWISE SPECIFIED: .X = ± .06 ANGLES ± 2° .XX = ± .03 FRACTIONS ± 1/32 .XXX = ± .010 REMOVE BURRS AND BREAK EDGES .005 DO NOT SCALE THIS PRINT	DRAWN BY: AW	SHEET: 2 of 2	PART NUMBER: EX-PI060
	CHECKED BY: TP	SCALE: NTS	DESCRIPTION:
	DATE: 01/18/05	MATERIAL: A36, ALUM.	DRAWING TYPE: ASSEMBLY DRAWING
	REVISION: A	FINISH: GALV A123	WEIGHT: 6.00 LBS



ORLAND PARK, IL. 60462
U.S.A.