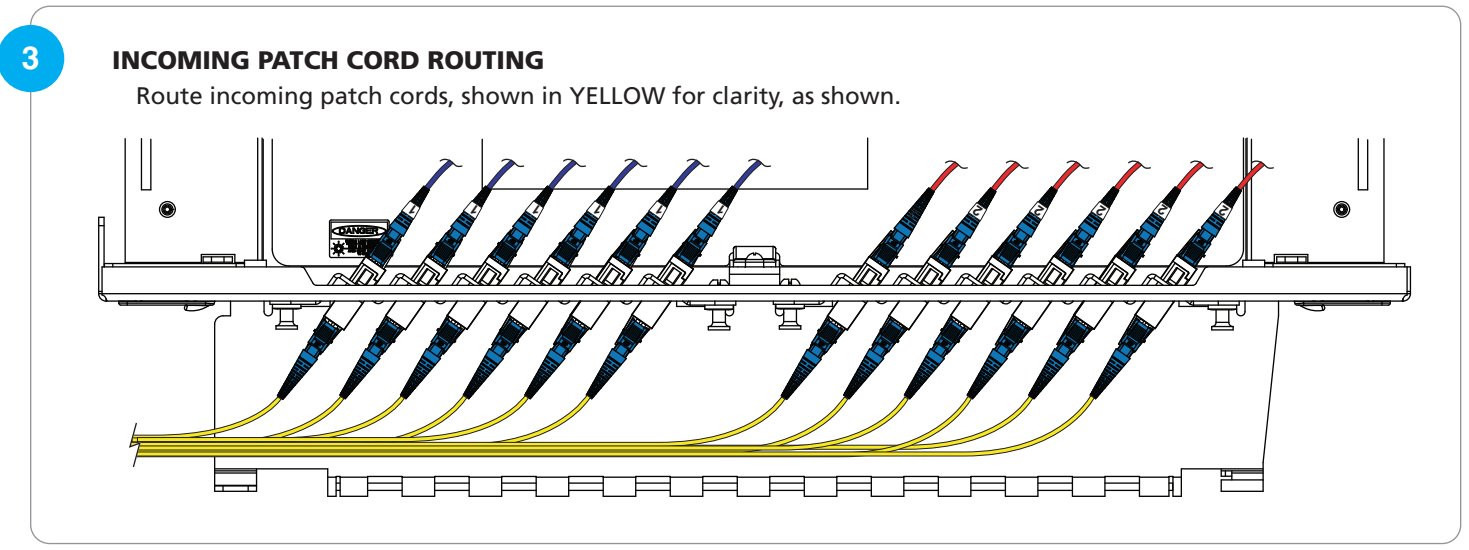
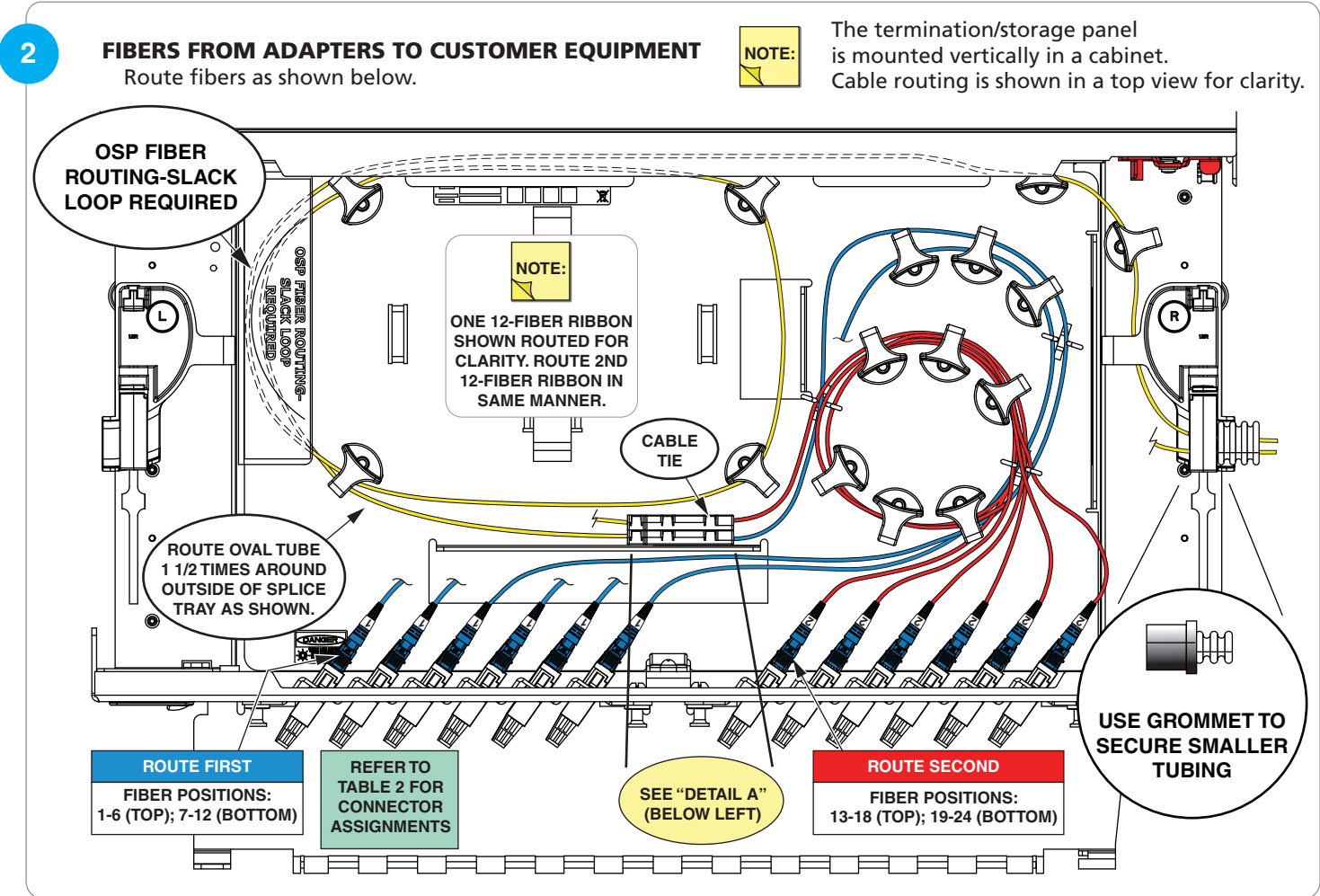
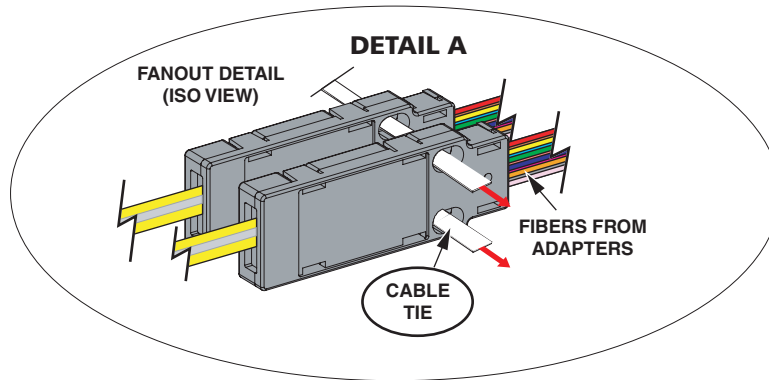
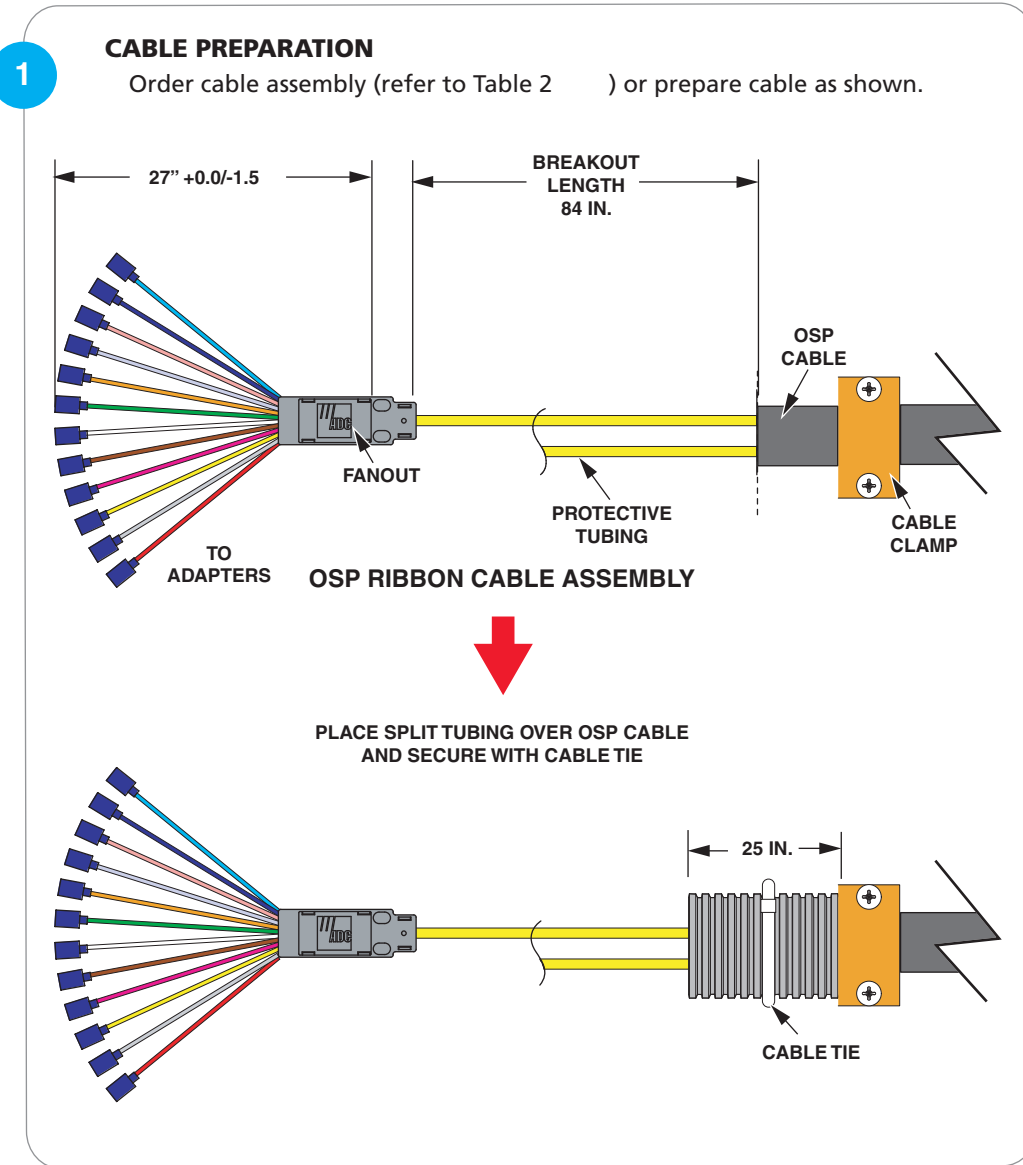


**Pre-Terminated  
Cable Only**

**Danger:** Infrared radiation is invisible and can seriously damage the retina of the eye. Do not look into the ends of any optical fiber. Do not look directly into the optical adapters of the adapter packs. Exposure to invisible laser radiation may result. A protective cap or hood **MUST** be immediately placed over any radiating adapter or optical fiber connector to avoid the potential of dangerous amounts of radiation exposure. This practice also prevents dirt particles from entering the connector and adapter.

For FMT panel dimensions, refer to drawing number 1421203.

ETSI 21-Inch Fiber Management Tray



**TABLE 1. HARDWARE SHIPPED WITH TERMINATION SPLICE PANEL**

DESCRIPTION	QUANTITY
12-24 SCREW	4
#12 LOCKWASHER	4
CABLE CLAMP KIT	1
CABLE TIE	2
KURLY LOCK	3
GROMMET	1

**TABLE 2. CONNECTORIZATION TABLE (CATALOG NUMBER: "FGP")**

FIBER POSITION / COLOR

1	2	3	4	5	6	7	8	9	10	11	12
BLU	ORG	GRN	BRN	SLT	WHT	RED	BLK	YEL	VIO	ROS	AQU

**TABLE 3. PRE-TERMINATED CABLE ONLY PANELS CATALOG NUMBERS AND DESCRIPTIONS**

CATALOG NUMBER	DESCRIPTION
OSA-7CHRA000FFMB	24-fiber OSP armored ribbon cable assembly with FMT LP breakout. Includes ground lug. "000" = length in feet
FMT-ACCCLMP07	FMT cable clamp kit, 0.25" standoff from frame
FL2-ACC056	OFS style grounding kit
FGS-MFTY-200F	Yellow split tube kit, 200 ft.

# Termination With Splicing Only

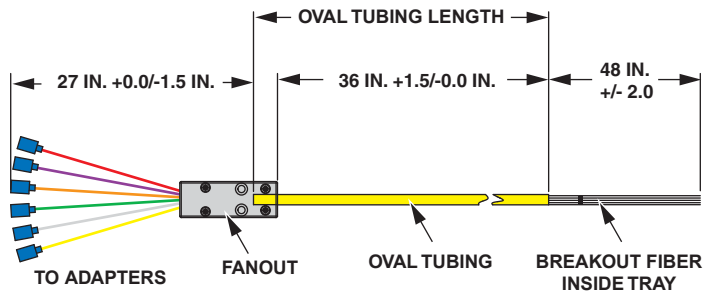
**Danger:** Infrared radiation is invisible and can seriously damage the retina of the eye. Do not look into the ends of any optical fiber. Do not look directly into the optical adapters of the adapter packs. Exposure to invisible laser radiation may result. A protective cap or hood **MUST** be immediately placed over any radiating adapter or optical fiber connector to avoid the potential of dangerous amounts of radiation exposure. This practice also prevents dirt particles from entering the connector and adapter.

## ETSI 21-Inch Fiber Management Tray

### 1 PIGTAIL CABLE PREPARATION

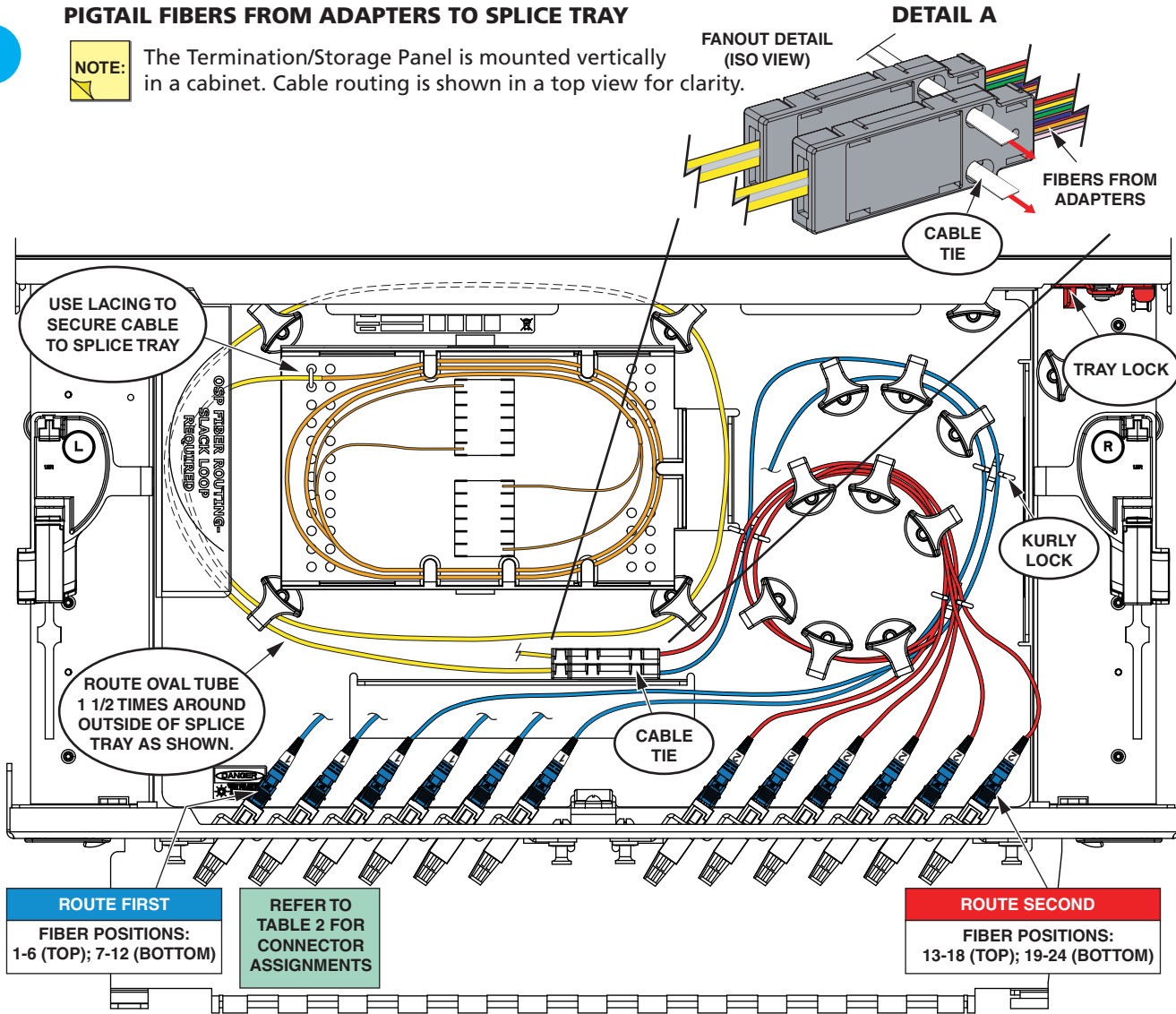
Order cable assembly (refer to Table 3 or prepare as shown).

For FMT panel dimensions, refer to drawing number 1421203.

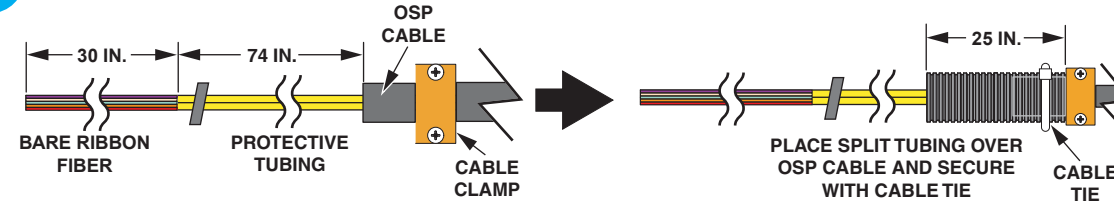


### 2 PIGTAIL FIBERS FROM ADAPTERS TO SPLICE TRAY

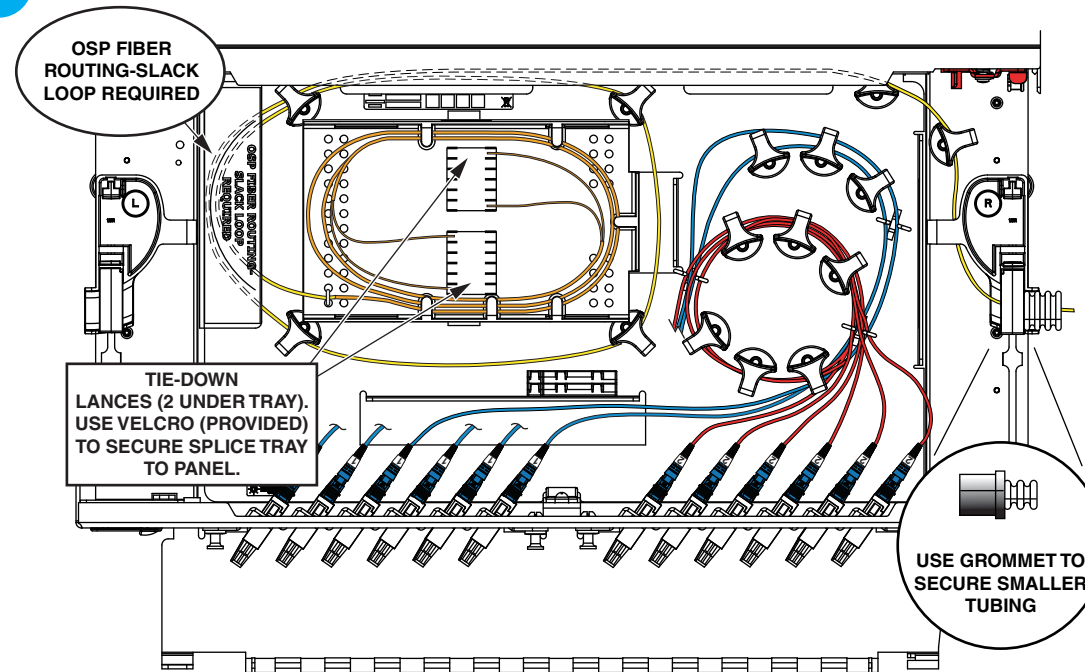
**NOTE:** The Termination/Storage Panel is mounted vertically in a cabinet. Cable routing is shown in a top view for clarity.



### 3 CABLE PREPARATION



### 4 INCOMING SPLICE CABLE ROUTING



### 5 INCOMING PATCH CORD ROUTING

Route incoming patch cables, shown in yellow for clarity, as shown.

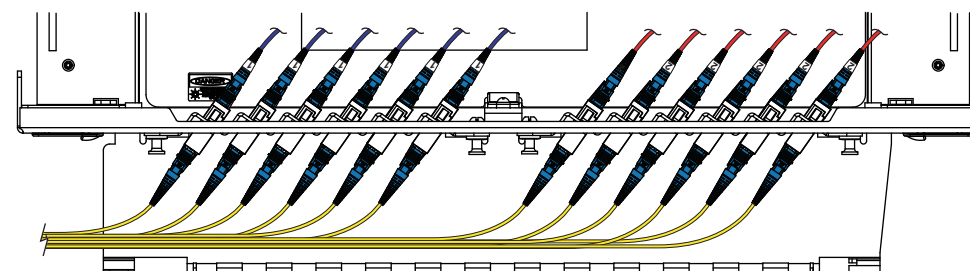


TABLE 1. HARDWARE SHIPPED WITH TERMINATION SPLICE PANEL

DESCRIPTION	QUANTITY
12-24 SCREW	4
#12 LOCKWASHER	4
CABLE CLAMP KIT	1
CABLE TIE	2
KURLY LOCK	3
GROMMET	1

TABLE 2. CONNECTORIZATION TABLE (CATALOG NUMBER: "FGP")

FIBER POSITION / COLOR											
1	2	3	4	5	6	7	8	9	10	11	12
BLU	ORG	GRN	BRN	SLT	WHT	RED	BLK	YEL	VIO	ROS	AQU

TABLE 3. TERMINATION WITH SPLICING ONLY PANELS CATALOG NUMBERS AND DESCRIPTIONS

CATALOG NUMBER	DESCRIPTION
FMT-ACC-PSPLICE	(2) 12-fiber ribbon pigtail with SMSC connectors and splice tray with mass fusion splice chip.
FMT-ACCCLMP07	FMT cable clamp kit, 0.25" standoff from frame.
FL2-ACC056	OFS style grounding kit
FGS-MFTY-200F	Yellow split tube kit, 200 ft.
FST-M-MT	Splice tray with mass fusion splice chip.