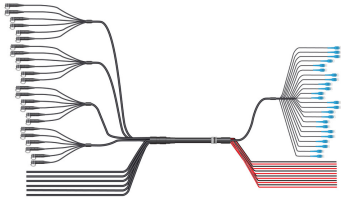


FDH1204-48SE2-80M



ANDREW-Proprietary and Confidential. Preliminary specifications are for illustrative purposes only and will be updated prior to publication.

HELIAX® Direct-connect 6 x 24 hybrid trunk assembly; 6 pairs of 4AWG DC conductors x 24 pairs of single mode fibers, 80M

- RRU (top) breakout; 6 blunt-cut power cords (6-6AWG pairs), 48 single mode fibers in outdoor-rated tails with ODC-compatible interface
- BBU (bottom) breakout; 12-4AWG power conductors blunt cut, 48 single mode fibers within 24 DLC tails

Product Classification

Regional Availability	Asia Australia/New Zealand EMEA Latin America North America
Product Type	Hybrid cable assembly
Product Brand	HELIAX®
Product Series	FDH

General Specifications

Conductors, quantity	12
Construction Type	Direct breakout trunk
Interface, Connector A	ODC-LC
Interface Feature, connector A	Outdoor
Interface Body Style, connector A	Straight
Interface, Connector B	DLC
Interface Feature, connector B	Standard
Interface Body Style, connector B	Straight
Jacket Color	Black
Total Fibers, quantity	48

Dimensions

Cord Length	80 m 262.467 ft
Diameter Over Jacket	44.78 mm 1.763 in

FDH1204-48SE2-80M

Center Conductor Gauge 4 AWG

Mechanical Specifications

Minimum Bend Radius 523.2 mm | 20.598 in

Minimum Bend Radius, furcation 30 mm | 1.181 in

Optical Specifications

Fiber Type G.657.A2/B2

Insertion Loss, typical note Insertion loss is measured at 1310 and 1550 nm

Insertion Loss, typical 0.75

Environmental Specifications

Operating Temperature -40 °C to +75 °C (-40 °F to +167 °F)

Packaging and Weights

Cable weight 3.4 kg/m | 2.285 lb/ft

Regulatory Compliance/Certifications

Agency	Classification
CHINA-ROHS	Below maximum concentration value
ISO 9001:2015	Designed, manufactured and/or distributed under this quality management system
REACH-SVHC	Compliant as per SVHC revision on www.andrew.com/ProductCompliance
ROHS	Compliant
UK-ROHS	Compliant



* Footnotes

Insertion Loss, typical note Insertion loss is measured at a room temp of +20°C (+68°F)