

# RVVPX306.11B-T2



6-port sector antenna, 2x 694–960 and 4x 1695–2690 MHz, 65° HPBW, 3x RET with manual override and SBT on every RF port

- Each port has an integrated bias tee, and each band has its own smart switch that automatically selects between bias tee or AISG inputs according to a predetermined priority table
- All Internal RET actuators are in SRET configuration, with dedicated AISG ports for each band

## General Specifications

<b>Antenna Type</b>	Sector
<b>Band</b>	Multiband
<b>Grounding Type</b>	RF connector body grounded to reflector and mounting bracket
<b>Performance Note</b>	Outdoor usage   Wind loading figures are validated by wind tunnel measurements described in white paper WP-112534-EN
<b>Radome Material</b>	Fiberglass, UV resistant
<b>Radiator Material</b>	Low loss circuit board
<b>Reflector Material</b>	Aluminum
<b>RF Connector Interface</b>	7-16 DIN Female
<b>RF Connector Location</b>	Bottom
<b>RF Connector Quantity, high band</b>	4
<b>RF Connector Quantity, low band</b>	2
<b>RF Connector Quantity, total</b>	6

## Remote Electrical Tilt (RET) Information

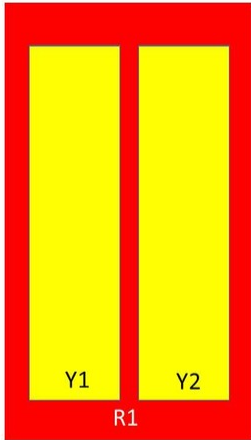
<b>RET Interface</b>	8-pin DIN Female   8-pin DIN Male
<b>RET Interface, quantity</b>	1 female   3 male
<b>Input Voltage</b>	10–30 Vdc
<b>Internal Bias Tee</b>	Port 1   Port 2   Port 3   Port 4   Port 5   Port 6
<b>Internal RET</b>	High band (2)   Low band (1)
<b>Power Consumption, idle state, maximum</b>	2 W
<b>Power Consumption, normal conditions, maximum</b>	13 W
<b>Protocol</b>	3GPP/AISG 2.0 (Single RET)

## Dimensions

# RVVPX306.11B-T2

<b>Width</b>	350 mm   13.78 in
<b>Depth</b>	208 mm   8.189 in
<b>Length</b>	1584 mm   62.362 in
<b>Net Weight, without mounting kit</b>	24.7 kg   54.454 lb

## Array Layout



Array	Freq (MHz)	Conns	RET (SRET)	AISG RET UID
R1	694-960	1-2	1	ARxxxxxxxxxxxxxxxxx1
Y1	1695-2690	3-4	2	ARxxxxxxxxxxxxxxxxx2
Y2	1695-2690	5-6	3	ARxxxxxxxxxxxxxxxxx3

Left                      Right  
Bottom

(Sizes of colored boxes are not true depictions of array sizes)

## Port Configuration

# RVVPX306.11B-T2

---



# RVVPX306.11B-T2



## Electrical Specifications

<b>Impedance</b>	50 ohm
<b>Operating Frequency Band</b>	1695 – 2690 MHz   694 – 960 MHz
<b>Polarization</b>	±45°
<b>Total Input Power, maximum</b>	650 W @ 50 °C

## Electrical Specifications

Frequency Band, MHz	694–790	790–890	890–960	1695–1920	1920–2180	2300–2690
<b>Gain, dBi</b>	14.3	14.9	15.2	17.2	17.8	18.4
<b>Beamwidth, Horizontal, degrees</b>	69	67	66	62	62	64
<b>Beamwidth, Vertical, degrees</b>	16.5	14.6	13.6	7.5	6.7	5.5
<b>Beam Tilt, degrees</b>	2–12	2–12	2–12	0–10	0–10	0–10
<b>USLS (First Lobe), dB</b>	15	18	21	18	20	19
<b>Front-to-Back Ratio at 180°, dB</b>	30	32	33	36	37	38
<b>Isolation, Cross Polarization, dB</b>	27	27	27	28	28	28
<b>Isolation, Inter-band, dB</b>	28	28	28	28	28	28
<b>VSWR   Return loss, dB</b>	1.5 14.0	1.5 14.0	1.5 14.0	1.5 14.0	1.5 14.0	1.5 14.0

# RVVPX306.11B-T2

<b>PIM, 3rd Order, 2 x 20 W, dBc</b>	-150	-150	-150	-150	-150	-150
<b>Input Power per Port at 50°C, maximum, watts</b>	150	150	150	150	150	100

## Electrical Specifications, BASTA

<b>Frequency Band, MHz</b>	<b>694–790</b>	<b>790–890</b>	<b>890–960</b>	<b>1695–1920</b>	<b>1920–2180</b>	<b>2300–2690</b>
<b>Gain by all Beam Tilts, average, dBi</b>	14.1	14.8	15	16.9	17.6	18.2
<b>Gain by all Beam Tilts Tolerance, dB</b>	±0.4	±0.3	±0.3	±0.5	±0.5	±0.3
<b>Gain by Beam Tilt, average, dBi</b>	2°   14.2 7°   14.1 12°   14.0	2°   14.8 7°   14.8 12°   14.7	2°   15.0 7°   15.1 12°   15.0	0°   16.8 5°   16.9 10°   16.9	0°   17.6 5°   17.6 10°   17.6	0°   18.2 5°   18.3 10°   18.2
<b>Beamwidth, Horizontal Tolerance, degrees</b>	±1.2	±1	±1.6	±2.9	±1.9	±3.2
<b>Beamwidth, Vertical Tolerance, degrees</b>	±1	±0.8	±0.5	±0.5	±0.5	±0.4
<b>USLS, beampeak to 20° above beampeak, dB</b>	18	18	22	18	19	19
<b>Front-to-Back Total Power at 180° ± 30°, dB</b>	25	25	26	29	27	29
<b>CPR at Boresight, dB</b>	20	19	20	19	20	19
<b>CPR at Sector, dB</b>	12	12	15	10	11	9

## Mechanical Specifications

<b>Wind Loading @ Velocity, frontal</b>	255.0 N @ 150 km/h (57.3 lbf @ 150 km/h)
<b>Wind Loading @ Velocity, lateral</b>	214.0 N @ 150 km/h (48.1 lbf @ 150 km/h)
<b>Wind Loading @ Velocity, maximum</b>	540.0 N @ 150 km/h (121.4 lbf @ 150 km/h)
<b>Wind Loading @ Velocity, rear</b>	270.0 N @ 150 km/h (60.7 lbf @ 150 km/h)
<b>Wind Speed, maximum</b>	241 km/h (150 mph)

## Packaging and Weights

<b>Width, packed</b>	420 mm   16.535 in
<b>Depth, packed</b>	310 mm   12.205 in
<b>Length, packed</b>	1760 mm   69.291 in
<b>Weight, gross</b>	41.4 kg   91.271 lb

## Regulatory Compliance/Certifications

<b>Agency</b>	<b>Classification</b>
---------------	-----------------------

# RVVPX306.11B-T2

---

CHINA-ROHS	Above maximum concentration value
ISO 9001:2015	Designed, manufactured and/or distributed under this quality management system
ROHS	Compliant/Exempted
UK-ROHS	Compliant/Exempted



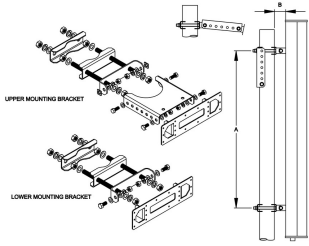
## Included Products

T-041-GL-E	-	Adjustable Tilt Pipe Mounting Kit for 2.0"-4.5" (60-115mm) OD round members for panel antennas. Includes 2 clamp sets.
------------	---	--

## \* Footnotes

<b>Performance Note</b>	Severe environmental conditions may degrade optimum performance
-------------------------	---

# T-041-GL-E



Adjustable Tilt Pipe Mounting Kit for 2.0"-4.5" (60-115mm) OD round members for panel antennas. Includes 2 clamp sets.

## Product Classification

**Product Type** Adjustable tilt mounting kit

## General Specifications

**Application** Outdoor

**Color** Silver

## Dimensions

**Compatible Length, maximum** 1500 mm | 59.055 in

**Compatible Length, minimum** 1200 mm | 47.244 in

**Compatible Diameter, maximum** 115 mm | 4.528 in

**Compatible Diameter, minimum** 60 mm | 2.362 in

**Antenna-to-Pipe Distance** 85 mm | 3.346 in

**Bracket-to-Bracket Distance** 976 mm | 38.425 in

**Weight, net** 5.5 kg | 12.125 lb

## Material Specifications

**Material Type** Galvanized steel

## Mechanical Specifications

**Mechanical Tilt** 0°-12° in steps of 2°

## Packaging and Weights

**Included** Brackets | Hardware

**Packaging quantity** 1

## Regulatory Compliance/Certifications

Agency	Classification
CE	Compliant with the relevant CE product directives

# T-041-GL-E

---

CHINA-ROHS	Below maximum concentration value
ISO 9001:2015	Designed, manufactured and/or distributed under this quality management system
REACH-SVHC	Compliant as per SVHC revision on <a href="http://www.commscope.com/ProductCompliance">www.commscope.com/ProductCompliance</a>
ROHS	Compliant
UK-ROHS	Compliant

