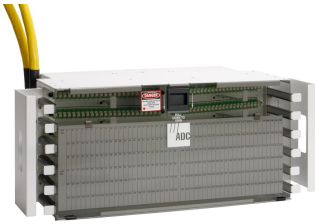


FCM-67/ODS075



FDF Fiber Termination Panel, 72 SC/UPC, singlemode, 8 in x 23 in, putty white, pre-terminated with IFC cable, 75 meters, stub tail at far end

Product Classification

| | |
|------------------------------|-----------------------------------|
| Regional Availability | Latin America North America |
| Portfolio | CommScope® |
| Product Type | Fiber patch panel, with IFC cable |
| Product Series | FDF |

General Specifications

| | |
|----------------------------------|---|
| Functionality | Patching |
| Application | Used in rear-load FDF-style frames only |
| Body Style | Symmetrical |
| Cable Exit Location | Upward |
| Cable Stub Type | IFC, ribbon |
| Color | Putty white |
| Color, front | Putty white |
| Growth Configuration | Fully loaded |
| Interface, front | SC/UPC |
| Interface, rear | Stub tail |
| Patch Cord Entry Location | Front, left side Front, right side |
| Rack Type | EIA 23 in |
| Rack Units | 4.57 |
| Shelf Movement | Fixed |
| Total Ports, quantity | 72 |

Dimensions

| | |
|---------------|------------------|
| Height | 203.2 mm 8 in |
| Width | 584.2 mm 23 in |
| Depth | 304.8 mm 12 in |

FCM-67/ODS075

Cable Length 75 m | 246.063 ft

Material Specifications

Finish Powder coated

Material Type Steel

Optical Specifications

Fiber Mode Singlemode

Environmental Specifications

Operating Temperature -40 °C to +70 °C (-40 °F to +158 °F)

Packaging and Weights

Packaging quantity 1

Regulatory Compliance/Certifications

| Agency | Classification |
|---------------|--|
| CHINA-ROHS | Above maximum concentration value |
| REACH-SVHC | Compliant as per SVHC revision on www.commscope.com/ProductCompliance |
| ROHS | Compliant/Exempted |
| UK-ROHS | Compliant/Exempted |

