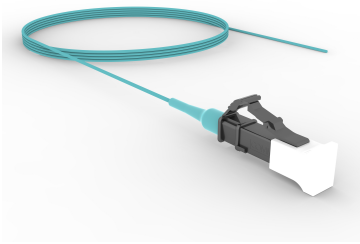


# FAXLCUC01



OM4 LC/UPC to Unconnectorized, 0.9mm Tight Buffer Simplex Fiber Pigtail

## Product Classification

### Regional Availability

Asia | Australia/New Zealand | China | Europe | India | Latin America | Middle East/Africa | North America

### Portfolio

CommScope®

### Product Type

Fiber pigtail, unjacketed

### Product Brand

SYSTIMAX InstaPATCH® 360

### Ordering Note

Minimum length may vary based on cable configuration

## General Specifications

### Color, boot A

Aqua

### Color, connector A

Black

### Interface, Connector A

LC/UPC

### Jacket Color

Aqua

### Total Fibers, quantity

1

## Dimensions

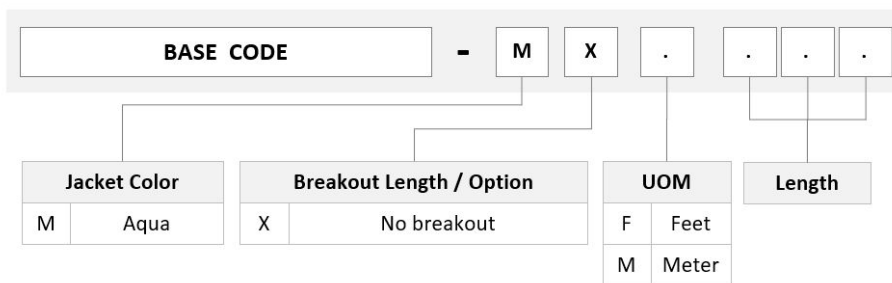
### Cable Assembly Length Range (m)

1 – 20

### Cable Assembly Length Range (ft)

1 – 66

## Ordering Tree



# FAXLCUC01

---

## Mechanical Specifications

**Cable Retention Strength, maximum** 1.00 lb @ 0° | 1.00 lb @ 90°

## Optical Specifications

**Fiber Mode** Multimode

**Fiber Type** OM4, LazrSPEED®

## Environmental Specifications

**Operating Temperature** -10 °C to +60 °C (+14 °F to +140 °F)

**Environmental Space** Unrated

## Packaging and Weights

**Packaging quantity** 2

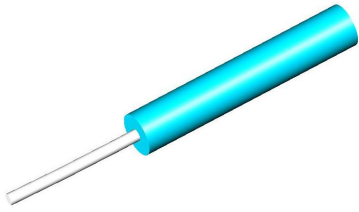
## Regulatory Compliance/Certifications

Agency	Classification
ANATEL	Compliant
CHINA-ROHS	Below maximum concentration value
ISO 9001:2015	Designed, manufactured and/or distributed under this quality management system
REACH-SVHC	Compliant as per SVHC revision on <a href="http://www.commscope.com/ProductCompliance">www.commscope.com/ProductCompliance</a>
ROHS	Compliant
UK-ROHS	Compliant



## Included Products

- 760039347 – LazrSPEED® 900µm Tight Buffered Fiber
- X-TB-5K-AQ-F/G
- 860657284 – LC/UPC Connector, Multimode, Aqua

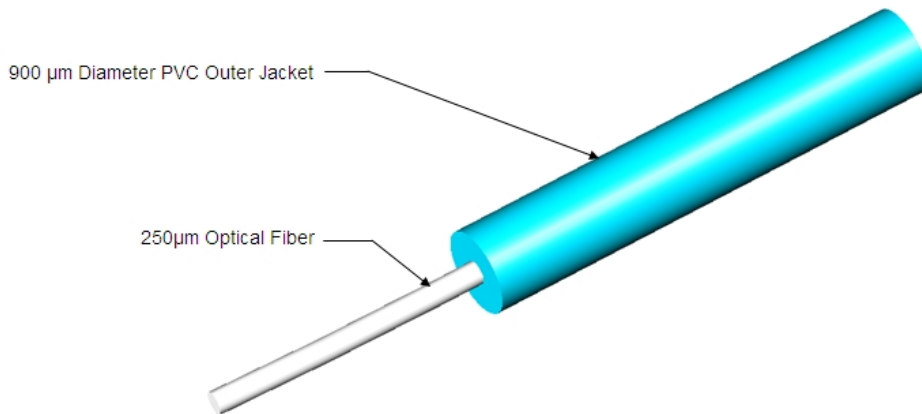


LazrSPEED® 900µm Tight Buffered Fiber

## Product Classification

<b>Regional Availability</b>	Asia   Australia/New Zealand   EMEA   Latin America   North America
<b>Portfolio</b>	CommScope®
<b>Product Type</b>	Fiber indoor cable

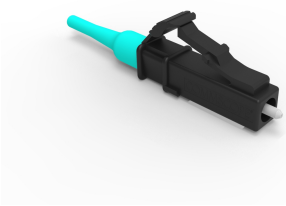
## Representative Image



## Regulatory Compliance/Certifications

Agency	Classification
CHINA-ROHS	Below maximum concentration value
ISO 9001:2015	Designed, manufactured and/or distributed under this quality management system
REACH-SVHC	Compliant as per SVHC revision on <a href="http://www.commscope.com/ProductCompliance">www.commscope.com/ProductCompliance</a>
ROHS	Compliant
UK-ROHS	Compliant





## LC/UPC Connector, Multimode, Aqua

### Product Classification

<b>Regional Availability</b>	Asia   Australia/New Zealand   EMEA   Latin America   North America
<b>Portfolio</b>	CommScope®
<b>Product Type</b>	Fiber connector

### General Specifications

<b>Color, boot</b>	Aqua
<b>Color, housing</b>	Black
<b>Interface</b>	LC/UPC

### Dimensions

<b>Length</b>	39.6 mm   1.559 in
<b>Compatible Cable Diameter</b>	0.9 mm   0.035 in

### Material Specifications

<b>Ferrule Material</b>	Zirconia
-------------------------	----------

### Mechanical Specifications

<b>Cable Retention Strength, maximum</b>	1.00 lb @ 0 °
--	---------------

### Optical Specifications

<b>Fiber Mode</b>	Multimode
<b>Insertion Loss Change, mating</b>	0.2 dB
<b>Optical Components Standard</b>	ANSI/TIA-568. 3-D   IEC 61753-1
<b>Insertion Loss Change, temperature</b>	0.2 dB
<b>Insertion Loss, maximum</b>	0.24 dB
<b>Return Loss, minimum</b>	27 dB

## Regulatory Compliance/Certifications

Agency	Classification
CHINA-ROHS	Above maximum concentration value
ROHS	Compliant/Exempted
UK-ROHS	Compliant/Exempted



### \* Footnotes

**Insertion Loss Change, mating** TIA-568: Maximum insertion loss change after 500 matings

**Insertion Loss Change, temperature** Maximum insertion loss change from -10 °C to +60 °C (+14 °F to +140 °F)