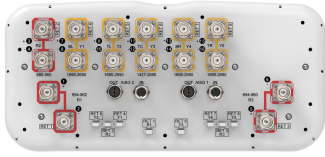


EGRZV4-65D-R8N43



16-ports sector antenna, 2x 694-862 (R1), 2x 880-960 (R2), 2x 694-960 (R3), 2x 1427-2690 (Y3), 8x 1695-2690 (Y1,Y2,Y4,Y5) MHz ,65° HPBW, 8x RET

- Retractable tilt indicator rods
- 8 Internal RET's provide independent electrical tilt control for each array
- All Internal RET actuators are connected in "Cascaded SRET" configuration
- Supports re-configurable antenna sharing capability enabling control of the internal RET system using up to two separate RET compatible OEM radios
- Antenna shape optimized for wind load reduction

General Specifications

Antenna Type	Sector with internal RET
Band	Multiband
Color	Light Gray (RAL 7035)
Grounding Type	RF connector inner conductor and body grounded to reflector and mounting bracket
Performance Note	Outdoor usage
Radome Material	Fiberglass, UV resistant
Reflector Material	Aluminum
RF Connector Interface	4.3-10 Female
RF Connector Location	Bottom
RF Connector Quantity, high band	10
RF Connector Quantity, low band	6
RF Connector Quantity, total	16

Remote Electrical Tilt (RET) Information

RET Hardware	CommRET v2
RET Interface	8-pin DIN Female 8-pin DIN Male
RET Interface, quantity	2 female 2 male
Input Voltage	10–30 Vdc
Internal RET	High band (5) Low band (3)
Power Consumption, active state, maximum	8 W
Power Consumption, idle state, maximum	1 W

EGRZV4-65D-R8N43

Protocol 3GPP/AISG 2.0 (Single RET)

Dimensions

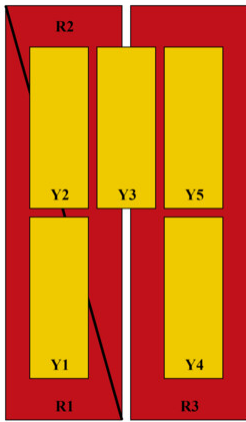
Width 430 mm | 16.929 in

Depth 197 mm | 7.756 in

Length 2769 mm | 109.016 in

Net Weight, antenna only 55.8 kg | 123.018 lb

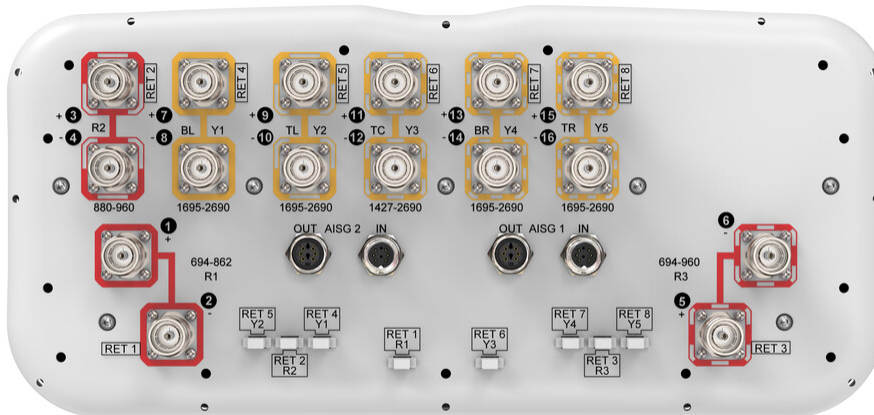
Array Layout



Array ID	Frequency (MHz)	RF Connector	RET (SRET)	AISG RET UID
R1	694-862	1 - 2	1	CPxxxxxxxxxxxxxxxxR1
R2	880-960	3 - 4	2	CPxxxxxxxxxxxxxxxxR2
R3	694-960	5 - 6	3	CPxxxxxxxxxxxxxxxxR3
Y1	1695-2690	7 - 8	4	CPxxxxxxxxxxxxxxxxY1
Y2	1695-2690	9 - 10	5	CPxxxxxxxxxxxxxxxxY2
Y3	1427-2690	11 - 12	6	CPxxxxxxxxxxxxxxxxY3
Y4	1695-2690	13 - 14	7	CPxxxxxxxxxxxxxxxxY4
Y5	1695-2690	15 - 16	8	CPxxxxxxxxxxxxxxxxY5

(Sizes of colored boxes are not true depictions of array sizes)

Port Configuration



Electrical Specifications

EGRZV4-65D-R8N43

Impedance	50 ohm
Operating Frequency Band	1427 – 2690 MHz 1695 – 2690 MHz 694 – 862 MHz 694 – 960 MHz 880 – 960 MHz
Polarization	±45°
Total Input Power, maximum	900 W @ 50 °C

Electrical Specifications

	R1	R2	R3	Y3	Y3	Y3	Y1,Y2,Y4,Y5	Y1,Y2,Y4,Y5
Frequency Band, MHz	694–862	880–960	694–960	1427–1518	1695–2180	2300–2690	1695–2200	2300–2690
RF Port	1,2	3,4	5,6	11,12	11,12	11,12	7-10,13-16	7-10,13-16
Gain, dBi	15.5	16.1	16.4	16.3	17.6	18.1	17.4	18.1
Beamwidth, Horizontal, degrees	59	54	58	58	56	62	59	58
Beamwidth, Vertical, degrees	7.3	6.3	6.9	7.2	5.6	4.4	6.2	5
Beam Tilt, degrees	2–12	2–12	2–12	2–12	2–12	2–12	2–12	2–12
USLS (First Lobe), dB	17	18	15	20	20	20	15	16
Front-to-Back Ratio at 180°, dB	34	31	31	35	31	32	32	32
Isolation, Cross Polarization, dB	27	27	27	26	26	26	27	27
Isolation, Inter-band, dB	27	27	27	27	27	27	27	27
VSWR Return loss, dB	1.5 14.0	1.5 14.0	1.5 14.0	1.5 14.0	1.5 14.0	1.5 14.0	1.5 14.0	1.5 14.0
PIM, 3rd Order, 2 x 20 W, dBc	-153	-153	-153	-153	-153	-153	-153	-153
Input Power per Port at 50°C, maximum, watts	300	300	300	250	250	200	250	200

Electrical Specifications, BASTA

Frequency Band, MHz	694–862	880–960	694–960	1427–1518	1695–2180	2300–2690	1695–2200	2300–2690
Gain by all Beam Tilts, average, dBi	15.1	15.7	15.8	16	17.3	17.7	16.8	17.7
Gain by all Beam Tilts Tolerance, dB	±0.7	±0.7	±0.7	±0.3	±0.4	±0.4	±1	±0.4
Beamwidth, Horizontal Tolerance, degrees	±7	±4	±7	±11	±8	±5	±7	±6
Beamwidth, Vertical Tolerance, degrees	±0.7	±0.4	±1	±0.4	±0.6	±0.3	±0.7	±0.3
USLS, beampeak to 20° above beampeak, dB	14	15	13	14	18	18	14	15

EGRZV4-65D-R8N43

Front-to-Back Total Power at 180° ± 30°, dB	23	24	24	26	28	26	25	26
CPR at Boresight, dB	22	25	23	17	17	16	17	17

Mechanical Specifications

Wind Loading @ Velocity, frontal	680.0 N @ 150 km/h (152.9 lbf @ 150 km/h)
Wind Loading @ Velocity, lateral	347.0 N @ 150 km/h (78.0 lbf @ 150 km/h)
Wind Loading @ Velocity, maximum	1,020.0 N @ 150 km/h (229.3 lbf @ 150 km/h)
Wind Loading @ Velocity, rear	434.0 N @ 150 km/h (97.6 lbf @ 150 km/h)
Wind Speed, maximum	241 km/h (150 mph)

Packaging and Weights

Width, packed	530 mm 20.866 in
Depth, packed	356 mm 14.016 in
Length, packed	2897 mm 114.055 in
Weight, gross	76.8 kg 169.315 lb

Regulatory Compliance/Certifications

Agency	Classification
CHINA-ROHS	Above maximum concentration value
ISO 9001:2015	Designed, manufactured and/or distributed under this quality management system
ROHS	Compliant/Exempted
UK-ROHS	Compliant/Exempted



Included Products

BSAMNT-4	-	Wide Profile Antenna Downtilt Mounting Kit for 2.4 - 4.5 in (60 - 115 mm) OD round members. Kit contains one scissor top bracket set and one bottom bracket set.
BSAMNT-M4	-	Middle Downtilt Mounting Kit for Long Antennas for 2.4 - 4.5 in (60 - 115 mm) OD round members. Kit contains one scissor bracket set.

* Footnotes

Performance Note	Severe environmental conditions may degrade optimum performance
-------------------------	---